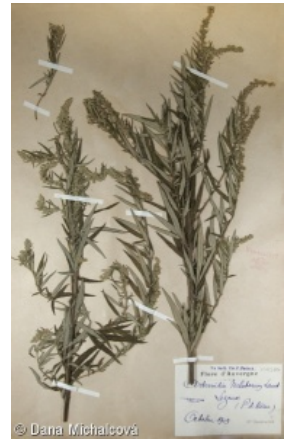
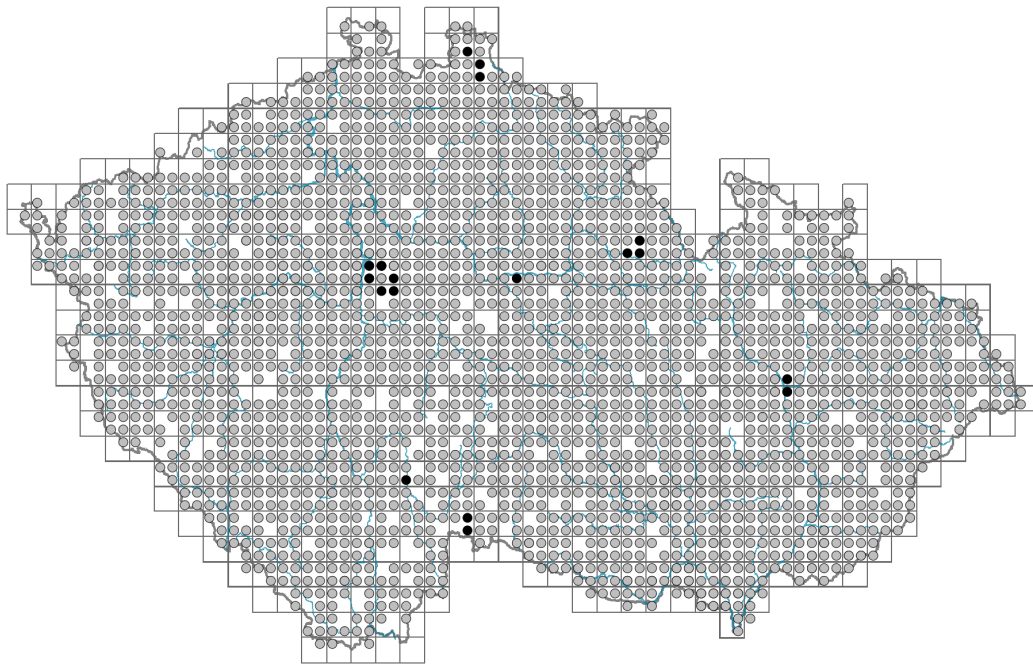


Artemisia vulgaris agg.

Distribution



© Dana Michalčová

Map info

● revised records

○ unrevised records

On the map are not visualized records without the coordinates and records marked as incorrect or doubtful.

Habitus and growth type

Height [m]: **0.5-3**

Growth form: **polycarpic perennial non-clonal herb, clonal herb**

Life form: **hemicryptophyte**

Life strategy: **C - competitor**

Leaf

Leaf presence and metamorphosis: **leaves present, not modified**

Leaf arrangement (phyllotaxis): **alternate**

Leaf shape: **simple - pinnately divided**

Stipules: **absent**

Petiole: **both present and absent, absent**

Leaf life span: **summer green, evergreen**

Leaf anatomy: **scleromorphic, mesomorphic**

Flower

Flowering period [month]: **July-November**

Flowering phase: **8 Clematis vitalba-Galium sylvaticum (mid-summer)**

Flower colour: **green-white, red-brown**

Flower symmetry: **actinomorphic**

Perianth type: **calyx absent, corolla present**



© Dana Michalčová



© Dana Michalčová

Perianth fusion: **fused**

Shape of the sympetalous corolla or syntepalous perianth: **tubular, filiform**

Inflorescence type: **panicula ex anthodiis composita**

Dicliny: **gynomonoecious**

Generative reproduction type: **facultative allogamy**

Pollination syndrome: **wind-pollination**

Fruit, seed and dispersal

Fruit type: **dry fruit - achene/cypsela/samara**

Fruit colour: **brown**

Reproduction type: **by seed/spores and vegetatively, only by seed/spores**

Dispersal unit (diaspore): **fruit, infrutescence or its part**

Dispersal strategy: **Allium (mainly autochory), Zea (no dispersal)**

Myrmecochory: **probably myrmecochorous**

Belowground organs and clonality

Shoot metamorphosis: **stolon, pleiocorm**

Storage organ: **stolon, pleiocorm**

Type of clonal growth organ: **hypogeogenous rhizome**

Freely dispersible organs of clonal growth: **absent**

Shoot life span (cyclicity): **monocyclic shoots prevailing, dicyclic or polycyclic shoots prevailing**

Branching type of stem-derived organs of clonal growth: **sympodial**

Primary root: **present**

Persistence of the clonal growth organ [year]: **2**

Number of clonal offspring: **1**

Lateral spreading distance by clonal growth [m]: **0.13**

Position of root buds: **lateral roots**

Role of root buds in life-history of a plant: **additive**

Bud bank

Number of buds per shoot at the soil surface (root buds excluded): **5**

Number of buds per shoot at a depth of 0–10 cm (root buds excluded): **14**

Number of buds per shoot at a depth greater than 10 cm (root buds excluded): **0**

Size of the belowground bud bank (root buds excluded): **19**

Depth of the belowground bud bank (root buds excluded) [cm]: **4**

Number of buds per shoot at the soil surface (root buds included): **5**

Number of buds per shoot at a depth of 0–10 cm (root buds included): **15**

Number of buds per shoot at a depth greater than 10 cm (root buds included): **8**

Size of the belowground bud bank (root buds included): **28**

Depth of the belowground bud bank (root buds included) [cm]: **6**

Trophic mode

Parasitism and mycoheterotrophy: **autotrophic**

Carnivory: **non-carnivorous**

Symbiotic nitrogen fixation: **no nitrogen-fixing symbionts**



Karyology

Chromosome number (2n): **16**

Ploidy level (x): **2**

2C genome size [Mbp]: **5457.03**

1Cx monoploid genome size [Mbp]: **2728.52**

Taxon origin

Origin in the Czech Republic: **native**

Geographic origin: **Asia**

Ecological indicator values

Ellenberg-type indicator values

Light indicator value: **7 - half-light plant, mostly occurring at full light, but also in the shade up to about 30% of diffuse radiation incident in an open area**

Temperature indicator value: **6 - transition between values 5 and 7**

Moisture indicator value: **5 - indicator of fresh soils, focus on soils of average moisture, missing on wet and on soils that frequently dry out**

Reaction indicator value: **6x - transition between values 5 and 7 (generalist)**

Nutrient indicator value: **8 - pronounced nutrient indicator**

Salinity indicator value: **1 - salt tolerant, mostly on low-salt to salt-free soils, but occasionally on slightly salty soils**

Habitat and sociology

Occurrence in habitats

1 Vegetation of cliffs, screes and walls

1A Calcareous cliffs: **1 - rare occurrence**

1B Siliceous cliffs and block fields: **1 - rare occurrence**

1C Walls: **1 - rare occurrence**

1D Mobile calcareous screes: **1 - rare occurrence**

2 Alpine and subalpine grasslands

2B Subalpine tall-forb and tall-grass vegetation: **1 - rare occurrence**

4 Wetland and riverine herbaceous vegetation

4A Reed-beds of eutrophic still waters: **1 - rare occurrence**

4B Halophilous reed and sedge beds: **1 - rare occurrence**

4D Riverine reed vegetation: **2 - optimum**

4H Vegetation of low annual hygrophilous herbs: **1 - rare occurrence**

4I Vegetation of nitrophilous annual hygrophilous herbs: **2 - optimum**

4J River gravel banks: **1 - rare occurrence**

4K Petasites fringes of montane brooks: **1 - rare occurrence**

4L Nitrophilous herbaceous fringes of lowland rivers: **2 - optimum**

6 Meadows and mesic pastures

6A Mesic Arrhenatherum meadows: **1 - rare occurrence**

6C Pastures and park grasslands: **1 - rare occurrence**

6D Alluvial meadows of lowland rivers: **1 - rare occurrence**



- 6F Intermittently wet Molinia meadows: **1 - rare occurrence**
 6G Vegetation of wet disturbed soils: **2 - optimum**
 8 Dry grasslands
 8C Narrow-leaved sub-continental steppes: **1 - rare occurrence**
 8D Broad-leaved dry grasslands: **1 - rare occurrence**
 8E Acidophilous dry grasslands: **1 - rare occurrence**
 8F Thermophilous forest fringe vegetation: **1 - rare occurrence**
 9 Sand grasslands and rock-outcrop vegetation
 9B Open vegetation of acidic sands: **1 - rare occurrence**
 9C Festuca grasslands on acidic sands: **1 - rare occurrence**
 9D Pannonian sand steppes: **1 - rare occurrence**
 9E Acidophilous vegetation of spring therophytes and succulents: **1 - rare occurrence**
 9F Basiphilous vegetation of spring therophytes and succulents: **1 - rare occurrence**
 10 Saline vegetation
 10I Inland saline meadows: **1 - rare occurrence**
 11 Heathlands and scrub
 11I Willow carrs: **1 - rare occurrence**
 11J Willow galleries of loamy and sandy river banks: **2 - optimum**
 11L Tall mesic and xeric shrub: **1 - rare occurrence**
 11R Scrub and pioneer woodland of forests clearings: **2 - optimum**
 12 Forests
 12B Alluvial forests: **1 - rare occurrence**
 12T Robinia pseudacacia plantations: **1 - rare occurrence**
 12U Plantations of broad-leaved non-native trees: **1 - rare occurrence**
 13 Anthropogenic vegetation
 13A Annual vegetation of ruderal habitats: **2 - optimum**
 13B Annual vegetation of arable land: **1 - rare occurrence**
 13C Annual vegetation of trampled habitats: **1 - rare occurrence**
 13D Perennial thermophilous ruderal vegetation: **4 - constant dominant**
 13E Perennial nitrophilous herbaceous vegetation of mesic sites: **2 - optimum**
 13F Herbaceous vegetation of forests clearings and Rubus scrub: **1 - rare occurrence**

Distribution and frequency

Floristic zone: **boreal, northern temperate, southern temperate, submeridional, meridional**

Floristic region: **Europe, Asia, Eastern Asia**

Elevational belt in the Czech Republic: **lowlands, colline belt, submontane belt, montane belt**

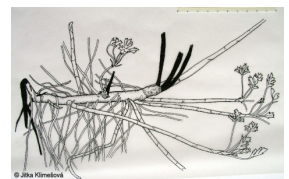
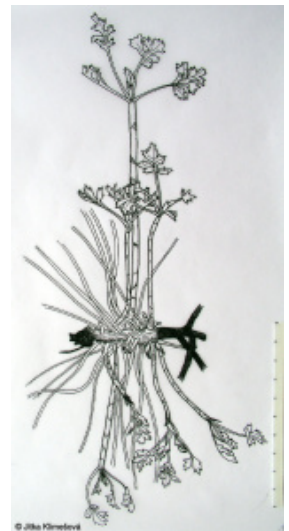
Expansive taxon in the region: **Bohemian Thermophyticum, Bohemian Moravian Mesophyticum, Bohemian Moravian Oreophyticum, Pannonian Thermophyticum, Carpathian Mesophyticum, Carpathian Oreophyticum**

Occurrence frequency in the basic grid mapping cells and quadrants of the basic grid mapping cells: 657

taxon.data.freq_in_quad: 2269

Commonness in vegetation plots from the Czech Republic

Maximum percentage cover in vegetation plots: **99 %**



Number of habitats with taxon occurrence in the Czech Republic

Number of narrow habitats in which the taxon occurs: **41**

Number of narrow habitats in which the taxon has its optimum: **9**

Number of broad habitats in which the taxon occurs: **10**

Number of broad habitats in which the taxon has its optimum: **4**

