

Symphytum officinale agg.

Distribution

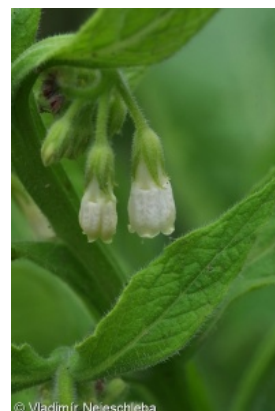


Map info

● revised records

○ unrevised records

On the map are not visualized records without the coordinates and records marked as incorrect or doubtful.



Habitus and growth type

Height [m]: **0.3-1.2**

Growth form: **polycarpic perennial non-clonal herb**

Life form: **hemicryptophyte, geophyte**

Life strategy: **C - competitor**

Leaf

Leaf presence and metamorphosis: **leaves present, not modified**

Leaf arrangement (phyllotaxis): **alternate**

Leaf shape: **simple - entire**

Stipules: **absent**

Petiole: **both present and absent**

Leaf life span: **summer green**

Leaf anatomy: **mesomorphic, hygromorphic**

Flower

Flowering period [month]: **May-August**

Flowering phase: **5 Sorbus aucuparia-Galium odoratum (end of mid-spring)**

Flower colour: **white, yellow-white, pink, blue-violet**

Flower symmetry: **actinomorphic**

Perianth type: **calyx and corolla**

Perianth fusion: **fused**

Shape of the sympetalous corolla or syntepalous perianth: **tubular**

Calyx fusion: **synsepalous**

Inflorescence type: **cincinnus**

Dicliny: **synoecious**

Generative reproduction type: **alogamy self-incompatibility, facultative alogamy**

Pollination syndrome: **insect-pollination, selfing**

Fruit, seed and dispersal

Fruit type: **dry fruit - cluster of four one-seeded nutlets**

Fruit colour: **brown, grey, black**

Reproduction type: **mostly by seed/spores, rarely vegetatively**

Dispersal unit (diaspore): **fruit, infrutescence or its part**

Dispersal strategy: **Allium (mainly autochory)**

Myrmecochory: **myrmecochorous, myrmecochorous nv**

Belowground organs and clonality

Shoot metamorphosis: **rhizome-like pleiocorm**

Root metamorphosis: **primary storage root**

Storage organ: **rhizome-like pleiocorm, primary storage root**

Shoot life span (cyclicity): **dicyclic or polycyclic shoots prevailing**

Branching type of stem-derived organs of clonal growth: **sympodial**

Primary root: **present**

Position of root buds: **lateral roots**

Role of root buds in life-history of a plant: **regenerative**

Bud bank

Number of buds per shoot at the soil surface (root buds excluded): **5**

Number of buds per shoot at a depth of 0–10 cm (root buds excluded): **12**

Number of buds per shoot at a depth greater than 10 cm (root buds excluded): **0**

Size of the belowground bud bank (root buds excluded): **17**

Depth of the belowground bud bank (root buds excluded) [cm]: **4**

Number of buds per shoot at the soil surface (root buds included): **5**

Number of buds per shoot at a depth of 0–10 cm (root buds included): **17**

Number of buds per shoot at a depth greater than 10 cm (root buds included): **15**

Size of the belowground bud bank (root buds included): **37**

Depth of the belowground bud bank (root buds included) [cm]: **9**

Trophic mode

Parasitism and mycoheterotrophy: **autotrophic**

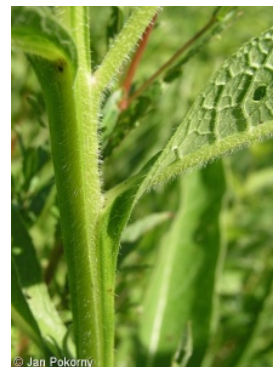
Carnivory: **non-carnivorous**

Symbiotic nitrogen fixation: **no nitrogen-fixing symbionts**

Karyology

Chromosome number (2n): **24, 48**

Ploidy level (x): **2, 4**



2C genome size [Mbp]: **2858.27**

1Cx monoploid genome size [Mbp]: **953**

Taxon origin

Origin in the Czech Republic: **native**

Ecological indicator values

Ellenberg-type indicator values

Light indicator value: **7 - half-light plant, mostly occurring at full light, but also in the shade up to about 30% of diffuse radiation incident in an open area**

Temperature indicator value: **6 - transition between values 5 and 7**

Moisture indicator value: **7 - humidity indicator, focus on well moistened, but not wet soils**

Reaction indicator value: **7x - indicator of slightly acidic to slightly basic conditions, never occurring in very acidic conditions (generalist)**

Nutrient indicator value: **8 - pronounced nutrient indicator**

Salinity indicator value: **1 - salt tolerant, mostly on low-salt to salt-free soils, but occasionally on slightly salty soils**

Habitat and sociology

Occurrence in habitats

4 Wetland and riverine herbaceous vegetation

4A Reed-beds of eutrophic still waters: **2 - optimum**

4B Halophilous reed and sedge beds: **1 - rare occurrence**

4C Eutrophic vegetation of muddy substrata: **1 - rare occurrence**

4D Riverine reed vegetation: **2 - optimum**

4E Reed vegetation of brooks: **1 - rare occurrence**

4G Tall-sedge beds: **2 - optimum**

4I Vegetation of nitrophilous annual hygrophilous herbs: **1 - rare occurrence**

4J River gravel banks: **1 - rare occurrence**

4K Petasites fringes of montane brooks: **1 - rare occurrence**

4L Nitrophilous herbaceous fringes of lowland rivers: **2 - optimum**

5 Vegetation of springs and mires

5B Lowland to montane soft-water springs: **1 - rare occurrence**

6 Meadows and mesic pastures

6A Mesic Arrhenatherum meadows: **2 - optimum**

6C Pastures and park grasslands: **1 - rare occurrence**

6D Alluvial meadows of lowland rivers: **2 - optimum**

6E Wet Cirsium meadows: **2 - optimum**

6F Intermittently wet Molinia meadows: **2 - optimum**

6G Vegetation of wet disturbed soils: **1 - rare occurrence**

8 Dry grasslands

8F Thermophilous forest fringe vegetation: **1 - rare occurrence**

10 Saline vegetation

10I Inland saline meadows: **1 - rare occurrence**



11 Heathlands and scrub

11I Willow carrs: **1 - rare occurrence**

11J Willow galleries of loamy and sandy river banks: **2 - optimum**

11L Tall mesic and xeric shrub: **1 - rare occurrence**

11R Scrub and pioneer woodland of forests clearings: **1 - rare occurrence**

12 Forests

12A Alder carrs: **2 - optimum**

12B Alluvial forests: **2 - optimum**

12I Sub-continental thermophilous oak forests: **1 - rare occurrence**

12T Robinia pseudacacia plantations: **1 - rare occurrence**

12U Plantations of broad-leaved non-native trees: **2 - optimum**

12W Pine and larch plantations: **1 - rare occurrence**

13 Anthropogenic vegetation

13A Annual vegetation of ruderal habitats: **1 - rare occurrence**

13B Annual vegetation of arable land: **1 - rare occurrence**

13D Perennial thermophilous ruderal vegetation: **1 - rare occurrence**

13E Perennial nitrophilous herbaceous vegetation of mesic sites: **2 - optimum**

13F Herbaceous vegetation of forests clearings and Rubus scrub: **1 - rare occurrence**

Affinity to the forest environment

Affinity to the forest environment in Thermophyticum: **2.2 - taxon occurring partly in the forest, but mainly in open vegetation**

Distribution and frequency

Floristic zone: **northern temperate, southern temperate, submeridional, meridional**

Floristic region: **Europe, Western Asia**

Elevational belt in the Czech Republic: **lowlands, colline belt, submontane belt**

Occurrence frequency in the basic grid mapping cells and quadrants of the basic grid mapping cells: 634

taxon.data.freq_in_quad: 2096

Commonness in vegetation plots from the Czech Republic

Maximum percentage cover in vegetation plots: **63 %**

Number of habitats with taxon occurrence in the Czech Republic

Number of narrow habitats in which the taxon occurs: **34**

Number of narrow habitats in which the taxon has its optimum: **13**

Number of broad habitats in which the taxon occurs: **8**

Number of broad habitats in which the taxon has its optimum: **5**



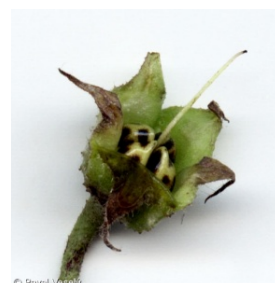
© Eva Hettnerbergerová



© Bohumil Trávníček



© Pavel Veselý



© Pavel Veselý



