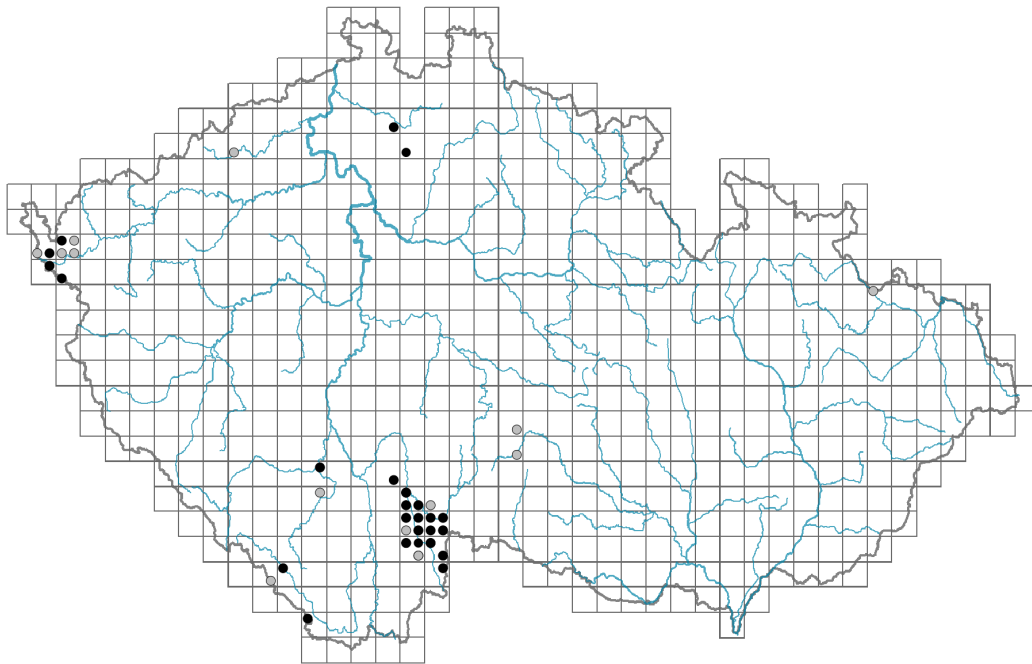


Utricularia intermedia agg.

Distribution



Map info

● revised records

● unrevised records

On the map are not visualized records without the coordinates and records marked as incorrect or doubtful.



Habitus and growth type

Height [m]: **0.1-0.5**

Growth form: **clonal herb**

Life form: **hydrophyte**

Leaf

Leaf presence and metamorphosis: **leaves present, not modified**

Leaf arrangement (phyllotaxis): **alternate**

Leaf shape: **simple - forked**

Stipules: **absent**

Petiole: **both present and absent**

Leaf life span: **summer green**

Leaf anatomy: **hydromorphic**

Flower

Flowering period [month]: **June-September**

Flowering phase: **8 Clematis vitalba-Galium sylvaticum (mid-summer)**

Flower colour: **yellow**

Flower symmetry: **zygomorphic**

Perianth type: **calyx and corolla**

Perianth fusion: **fused**

Shape of the sympetalous corolla or syntepalous perianth: **bilabiate**

Calyx fusion: **synsepalous**

Inflorescence type: **racemus**

Dicliny: **synoecious, male sterile**

Generative reproduction type: **mixed mating**

Pollination syndrome: **insect-pollination**

Fruit, seed and dispersal

Fruit type: **dry fruit - capsule**

Reproduction type: **only vegetatively, mostly vegetatively, rarely by seed/spores**

Dispersal unit (diaspore): **seed, turion, shoot fragment**

Dispersal strategy: **Wolffia (mainly hydrochory)**

Myrmecochory: **non-myrmecochorous (b)**

Belowground organs and clonality

Shoot metamorphosis: **turion**

Storage organ: **turion**

Type of clonal growth organ: **turion**

Freely dispersible organs of clonal growth: **present**

Shoot life span (cyclicality): **monocyclic shoots prevailing**

Branching type of stem-derived organs of clonal growth: **monopodial**

Primary root: **absent**

Persistence of the clonal growth organ [year]: **1**

Number of clonal offspring: **6**

Lateral spreading distance by clonal growth [m]: **0**

Bud bank

Number of buds per shoot at the soil surface (root buds excluded): **5**

Number of buds per shoot at a depth of 0–10 cm (root buds excluded): **3**

Number of buds per shoot at a depth greater than 10 cm (root buds excluded): **0**

Size of the belowground bud bank (root buds excluded): **8**

Depth of the belowground bud bank (root buds excluded) [cm]: **2**

Number of buds per shoot at the soil surface (root buds included): **5**

Number of buds per shoot at a depth of 0–10 cm (root buds included): **3**

Number of buds per shoot at a depth greater than 10 cm (root buds included): **0**

Size of the belowground bud bank (root buds included): **8**

Depth of the belowground bud bank (root buds included) [cm]: **2**

Trophic mode

Parasitism and mycoheterotrophy: **autotrophic**

Carnivory: **carnivorous**

Symbiotic nitrogen fixation: **no nitrogen-fixing symbionts**

Karyology

Chromosome number (2n): **40, 44, 46, 48**

Ploidy level (x): **2**



2C genome size [Mbp]: **481.04**

1Cx monoploid genome size [Mbp]: **240.52**

Taxon origin

Origin in the Czech Republic: **native**

Ecological indicator values

Ellenberg-type indicator values

Light indicator value: **8 - light plant, only exceptionally occurring at less than 40% of diffuse radiation incident in an open area**

Temperature indicator value: **5 - moderate heat indicator, occurring from lowland to montane belt, mainly in submontane-temperate areas**

Moisture indicator value: **12 - permanently or almost permanently submerged aquatic plant**

Reaction indicator value: **4 - transition between values 3 and 5**

Nutrient indicator value: **2 - transition between values 1 and 3**

Salinity indicator value: **0 - not salt tolerant, glycophyte**

Habitat and sociology

Occurrence in habitats

3 Aquatic vegetation

3C Macrophytic vegetation of oligotrophic lakes and pools: **2 - optimum**

5 Vegetation of springs and mires

5E Acidic moss-rich fens and peatland meadows: **1 - rare occurrence**

5F Transitional mires: **1 - rare occurrence**

5H Wet peat soils and bog hollows: **1 - rare occurrence**

Affinity to the forest environment

Affinity to the forest environment in Thermophyticum: **0 - taxon that does not spontaneously occur in Czech forests**

Affinity to the forest environment in Mesophyticum and Oreophyticum: **0 - taxon that does not spontaneously occur in Czech forests**

Distribution and frequency

Floristic zone: **arctic, boreal, northern temperate, southern temperate, submeridional**

Floristic region: **Europe, Eastern America, circumpolar**

Elevational belt in the Czech Republic: **colline belt, submontane belt**

Occurrence frequency in the basic grid mapping cells and quadrants of the basic grid mapping cells: **25**

taxon.data.freq_in_quad: **40**

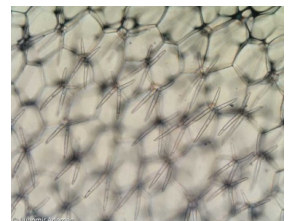
Commonness in vegetation plots from the Czech Republic

Maximum percentage cover in vegetation plots: **88 %**

Number of habitats with taxon occurrence in the Czech Republic

Number of narrow habitats in which the taxon occurs: **4**

Number of narrow habitats in which the taxon has its optimum: **1**



Number of broad habitats in which the taxon occurs: **2**

Number of broad habitats in which the taxon has its optimum: **1**