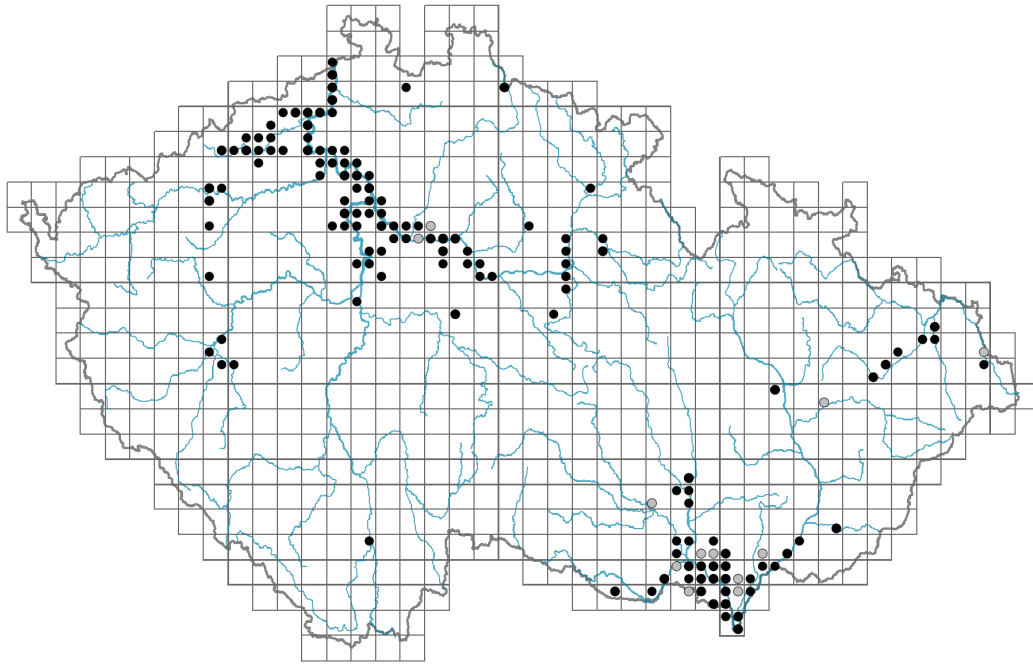


Xanthium orientale agg.

Distribution

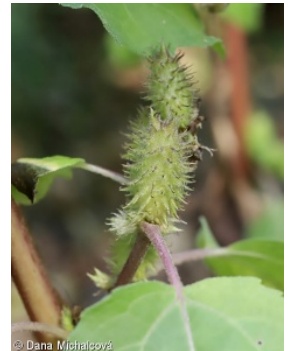


Map info

● revised records

● unrevised records

On the map are not visualized records without the coordinates and records marked as incorrect or doubtful.



Habitus and growth type

Height [m]: **0.1-1.5**

Growth form: **annual herb**

Life form: **therophyte**

Life strategy: **CR - competitor/ruderal**

Leaf

Leaf presence and metamorphosis: **leaves present, not modified**

Leaf arrangement (phyllotaxis): **alternate, opposite**

Leaf shape: **simple - entire**

Stipules: **absent**

Petiole: **present**

Leaf life span: **summer green**

Leaf anatomy: **scleromorphic, mesomorphic**

Flower

Flowering period [month]: **August-October**

Flower colour: **green**

Flower symmetry: **actinomorphic**

Perianth type: **calyx absent, corolla sometimes present**

Perianth fusion: **fused**

Shape of the sympetalous corolla or syntepalous perianth: **tubular**
 Inflorescence type: **panicula ex anthodiis composita**
 Dicliny: **monoecious**
 Generative reproduction type: **facultative autogamy**
 Pollination syndrome: **wind-pollination**

Fruit, seed and dispersal

Fruit type: **dry fruit - achene/cypsela/samara**
 Fruit colour: **green, yellow, brown**
 Reproduction type: **only by seed/spores**
 Dispersal unit (diaspore): **fruit, infrutescence or its part**
 Dispersal strategy: **Bidens (mainly autochory and epizoochory)**
 Myrmecochory: **non-myrmecochorous (b) nv**

Belowground organs and clonality

Shoot life span (cyclicity): **monocyclic shoots prevailing**
 Primary root: **present**
 Bud bank
 Number of buds per shoot at the soil surface (root buds excluded): **5**
 Number of buds per shoot at a depth of 0–10 cm (root buds excluded): **0**
 Number of buds per shoot at a depth greater than 10 cm (root buds excluded): **0**
 Size of the belowground bud bank (root buds excluded): **5**
 Depth of the belowground bud bank (root buds excluded) [cm]: **1**
 Number of buds per shoot at the soil surface (root buds included): **5**
 Number of buds per shoot at a depth of 0–10 cm (root buds included): **0**
 Number of buds per shoot at a depth greater than 10 cm (root buds included): **0**
 Size of the belowground bud bank (root buds included): **5**
 Depth of the belowground bud bank (root buds included) [cm]: **1**

Trophic mode

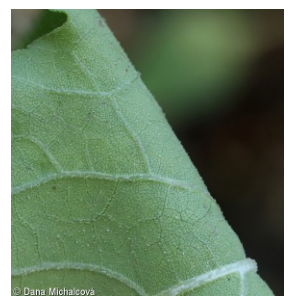
Parasitism and mycoheterotrophy: **autotrophic**
 Carnivory: **non-carnivorous**
 Symbiotic nitrogen fixation: **no nitrogen-fixing symbionts**

Karyology

Chromosome number (2n): **36**
 Ploidy level (x): **2**
 2C genome size [Mbp]: **4434.49**
 1Cx monoploid genome size [Mbp]: **2217.24**

Taxon origin

Origin in the Czech Republic: **neophyte**
 Invasion status: **naturalized**
 Geographic origin: **Europe, North America**



Ecological indicator values

Ellenberg-type indicator values

Light indicator value: **7 - half-light plant, mostly occurring at full light, but also in the shade up to about 30% of diffuse radiation incident in an open area**

Temperature indicator value: **6 - transition between values 5 and 7**

Moisture indicator value: **6 - transition between values 5 and 7**

Reaction indicator value: **7 - indicator of slightly acidic to slightly basic conditions, never occurring in very acidic conditions**

Nutrient indicator value: **7 - occurring at nutrient-rich sites more often than at average sites and only exceptionally at poor sites**

Salinity indicator value: **1 - salt tolerant, mostly on low-salt to salt-free soils, but occasionally on slightly salty soils**



Habitat and sociology

Occurrence in habitats

4 Wetland and riverine herbaceous vegetation

4H Vegetation of low annual hygrophilous herbs: **1 - rare occurrence**

4I Vegetation of nitrophilous annual hygrophilous herbs: **2 - optimum**

4L Nitrophilous herbaceous fringes of lowland rivers: **2 - optimum**

13 Anthropogenic vegetation

13A Annual vegetation of ruderal habitats: **2 - optimum**

13B Annual vegetation of arable land: **1 - rare occurrence**

13D Perennial thermophilous ruderal vegetation: **1 - rare occurrence**

Affinity to the forest environment

Affinity to the forest environment in Thermophyticum: **0 - taxon that does not spontaneously occur in Czech forests**

Affinity to the forest environment in Mesophyticum and Oreophyticum: **0 - taxon that does not spontaneously occur in Czech forests**



Distribution and frequency

Floristic zone: **northern temperate, southern temperate**

Floristic region: **Europe**

Elevational belt in the Czech Republic: **lowlands, colline belt**

Occurrence frequency in the basic grid mapping cells and quadrants of the basic grid mapping cells: 83

taxon.data.freq_in_quad: 145

Commonness in vegetation plots from the Czech Republic

Maximum percentage cover in vegetation plots: **2 %**

Number of habitats with taxon occurrence in the Czech Republic

Number of narrow habitats in which the taxon occurs: **6**

Number of narrow habitats in which the taxon has its optimum: **3**

Number of broad habitats in which the taxon occurs: **2**

Number of broad habitats in which the taxon has its optimum: **2**





