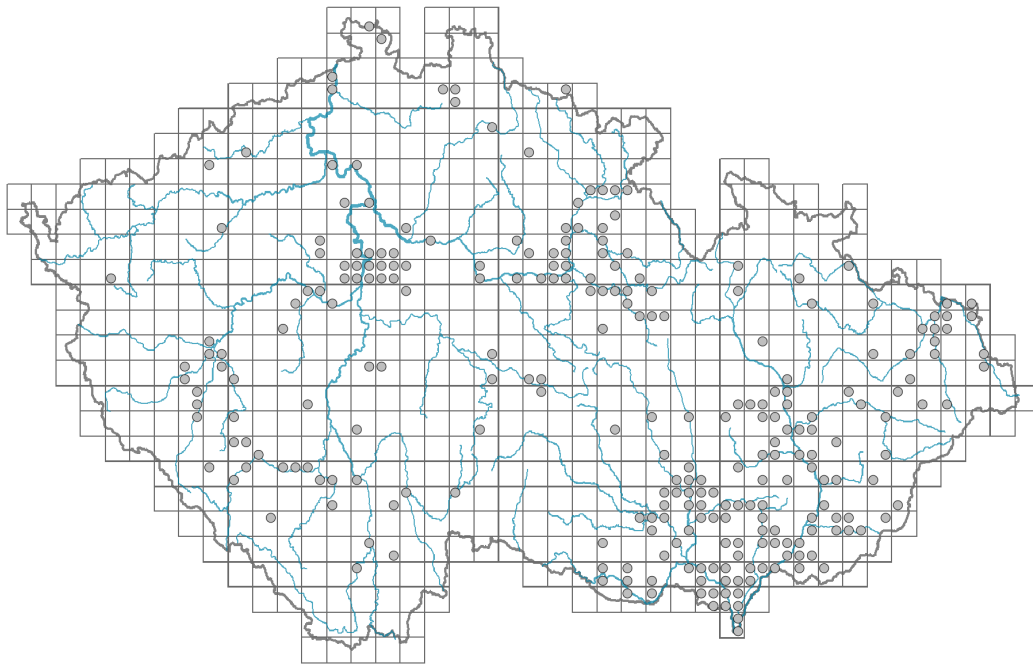


Amaranthus albus

Distribution



Map info

- revised records
- unrevised records

On the map are not visualized records without the coordinates and records marked as incorrect or doubtful.



Habitus and growth type

Height [m]: **0.1-0.7**

Growth form: **annual herb**

Life form: **therophyte**

Life strategy: **SR - stress-tolerator/ruderal**

Leaf

Leaf presence and metamorphosis: **leaves present, not modified**

Leaf arrangement (phyllotaxis): **alternate**

Leaf shape: **simple - entire**

Stipules: **absent**

Petiole: **present**

Leaf life span: **summer green**

Leaf anatomy: **mesomorphic**



Flower

Flowering period [month]: **July-October**

Flowering phase: **8 Clematis vitalba-Galium sylvaticum (mid-summer)**

Flower colour: **green**

Flower symmetry: **actinomorphic**

Perianth type: **homochlamydeous**

Perianth fusion: **free**

Inflorescence type: **pseudospica**

Dicliny: **monoecious**

Generative reproduction type: **facultative autogamy**

Pollination syndrome: **wind-pollination, selfing**

Fruit, seed and dispersal

Fruit type: **dry fruit - capsule**

Fruit colour: **brown**

Reproduction type: **only by seed/spores**

Dispersal unit (diaspore): **seed, tumbleweed**

Dispersal strategy: **Allium (mainly autochory)**

Myrmecochory: **non-myrmecochorous (b)**

Belowground organs and clonality

Shoot life span (cyclicity): **monocyclic shoots prevailing**

Primary root: **present**

Bud bank

Number of buds per shoot at the soil surface (root buds excluded): **0**

Number of buds per shoot at a depth of 0-10 cm (root buds excluded): **0**

Number of buds per shoot at a depth greater than 10 cm (root buds excluded): **0**

Size of the belowground bud bank (root buds excluded): **0**

Number of buds per shoot at the soil surface (root buds included): **0**

Number of buds per shoot at a depth of 0-10 cm (root buds included): **0**

Number of buds per shoot at a depth greater than 10 cm (root buds included): **0**

Size of the belowground bud bank (root buds included): **0**

Trophic mode

Parasitism and mycoheterotrophy: **autotrophic**

Carnivory: **non-carnivorous**

Symbiotic nitrogen fixation: **no nitrogen-fixing symbionts**

Taxon origin

Origin in the Czech Republic: **neophyte**

Invasion status: **invasive**

Geographic origin: **North America**

Year of the first record in the wild: **1893**

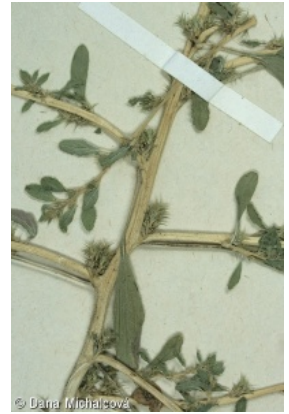
Period of introduction: **Late Modern Period (1800-1950)**

Introduction pathway: **unintentional - traffic, unintentional - anthropogenic**

Ecological indicator values

Ellenberg-type indicator values

Light indicator value: **9 - full light plant, occurring only in fully irradiated places, not at less than 50% of diffuse radiation incident in an open area**



Temperature indicator value: **8 - transition between values 7 and 9**
 Moisture indicator value: **3 - missing on damp soil**
 Reaction indicator value: **7x - indicator of slightly acidic to slightly basic conditions, never occurring in very acidic conditions (generalist)**
 Nutrient indicator value: **7 - occurring at nutrient-rich sites more often than at average sites and only exceptionally at poor sites**
 Salinity indicator value: **1 - salt tolerant, mostly on low-salt to salt-free soils, but occasionally on slightly salty soils**
 Indicator values for disturbance
 Whole-community disturbance frequency indicator value: **0.33**
 Herb layer disturbance frequency indicator value: **0.33**
 Whole-community disturbance severity indicator value: **0.95**
 Herb layer disturbance severity indicator value: **0.95**
 Whole-community structure based disturbance indicator value: **0.71**
 Herb layer structure-based disturbance indicator value: **0.75**



Habitat and sociology

Occurrence in habitats

13 Anthropogenic vegetation

13A Annual vegetation of ruderal habitats: **2 - optimum**

13B Annual vegetation of arable land: **2 - optimum**

13C Annual vegetation of trampled habitats: **2 - optimum**

13D Perennial thermophilous ruderal vegetation: **1 - rare occurrence**

Affinity to the forest environment

Affinity to the forest environment in Thermophyticum: **0 - taxon that does not spontaneously occur in Czech forests**

Affinity to the forest environment in Mesophyticum and Oreophyticum: **0 - taxon that does not spontaneously occur in Czech forests**

Diagnostic taxon

Diagnostic taxon of alliances: [XBJ *Salsolion ruthenicae*](#)

Diagnostic taxon of associations: [XBG12 *Ivaetum xanthiifoliae*](#), [XBG13 *Kochietum densiflorae*](#), [XBJ01 *Chenopodietum botryos*](#)

Constant taxon

Constant taxon of associations: [XBG12 *Ivaetum xanthiifoliae*](#)

Ecological specialization indices

Ecological specialization index for all vegetation types: **5**

Ecological specialization index for non-forest vegetation: **5.1**

Distribution and frequency

Floristic zone: **meridional, subtropical**

Floristic region: **Americas**

Continentality degree: **6**

Distribution range extension along the continentality gradient: **6**

Elevational belt in the Czech Republic: **lowlands, colline belt, submontane belt**

Occurrence frequency in the basic grid mapping cells and quadrants of the basic grid mapping cells: **177**

taxon.data.freq_in_quad: 262

Commonness in vegetation plots from the Czech Republic

Occurrence frequency in vegetation plots: **0.1 %**

Occurrence frequency in vegetation plots with a cover above 5%: **3.6 %**

Occurrence frequency in vegetation plots with a cover above 25%: **3.6 %**

Occurrence frequency in vegetation plots with a cover above 50%: **3.6 %**

Mean percentage cover in vegetation plots: **4.1 %**

Maximum percentage cover in vegetation plots: **63 %**

Number of habitats with taxon occurrence in the Czech Republic

Number of narrow habitats in which the taxon occurs: **4**

Number of narrow habitats in which the taxon has its optimum: **3**

Number of broad habitats in which the taxon occurs: **1**

Number of broad habitats in which the taxon has its optimum: **1**

Threats and protection

Red List 2017 (national categories): **taxon is not on the Red List**

Red List 2017 (IUCN categories): **LC(NA) - least concern (taxon is not on the Red List)**

Legal protection: **not protected by law**