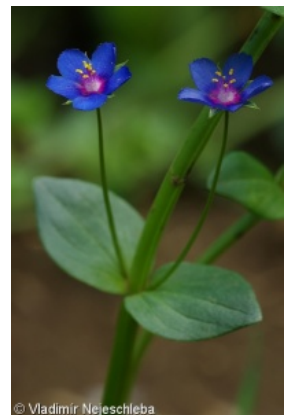
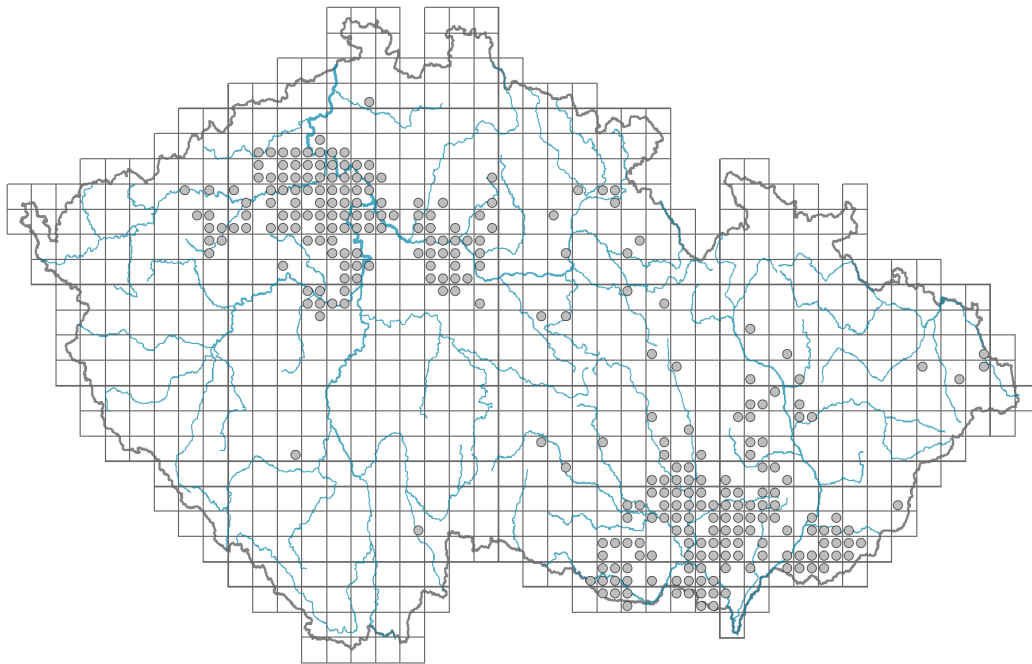


Anagallis foemina

Distribution



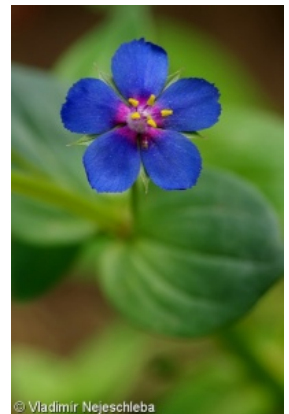
© Vladimír Nejšchleba

Map info

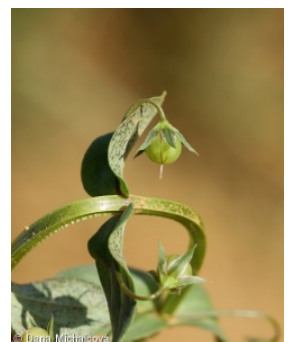
● revised records

○ unrevised records

On the map are not visualized records without the coordinates and records marked as incorrect or doubtful.



© Vladimír Nejšchleba



© Dana Michalová

Habitus and growth type

Height [m]: **0.05-0.4**

Growth form: **annual herb**

Life form: **therophyte**

Life strategy: **R - ruderal**

Life strategy (Pierce method based on leaf traits): **R/CR**

Life strategy (Pierce method, C-score): **16.5 %**

Life strategy (Pierce method, S-score): **9.9 %**

Life strategy (Pierce method, R-score): **73.6 %**

Leaf

Leaf presence and metamorphosis: **leaves present, not modified**

Leaf arrangement (phyllotaxis): **opposite**

Leaf shape: **simple - entire**

Stipules: **absent**

Petiole: **absent**

Leaf life span: **summer green**

Leaf anatomy: **mesomorphic**

Flower

Flowering period [month]: **June-September**

Flowering phase: **7 Ligustrum vulgare-Stachys sylvatica (end of early summer)**

Flower colour: **blue**

Flower symmetry: **actinomorphic**

Perianth type: **calyx and corolla**

Perianth fusion: **fused**

Shape of the sympetalous corolla or syntepalous perianth: **rotate**

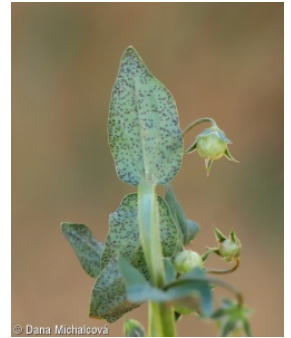
Calyx fusion: **fused at the base**

Inflorescence type: **flores solitarii**

Dicliny: **synoecious**

Generative reproduction type: **facultative autogamy**

Pollination syndrome: **insect-pollination, selfing, pseudocleistogamy**



Fruit, seed and dispersal

Fruit type: **dry fruit - capsule**

Fruit colour: **brown**

Reproduction type: **only by seed/spores**

Dispersal unit (diaspore): **seed**

Dispersal strategy: **Allium (mainly autochory)**

Myrmecochory: **non-myrmecochorous (b)**

Belowground organs and clonality

Shoot life span (cyclicality): **monocyclic shoots prevailing**

Primary root: **present**

Position of root buds: **hypocotyl**

Role of root buds in life-history of a plant: **additive**

Bud bank

Number of buds per shoot at the soil surface (root buds excluded): **5**

Number of buds per shoot at a depth of 0–10 cm (root buds excluded): **0**

Number of buds per shoot at a depth greater than 10 cm (root buds excluded): **0**

Size of the belowground bud bank (root buds excluded): **5**

Depth of the belowground bud bank (root buds excluded) [cm]: **1**

Number of buds per shoot at the soil surface (root buds included): **5**

Number of buds per shoot at a depth of 0–10 cm (root buds included): **0**

Number of buds per shoot at a depth greater than 10 cm (root buds included): **0**

Size of the belowground bud bank (root buds included): **5**

Depth of the belowground bud bank (root buds included) [cm]: **1**

Trophic mode

Parasitism and mycoheterotrophy: **autotrophic**

Carnivory: **non-carnivorous**

Symbiotic nitrogen fixation: **no nitrogen-fixing symbionts**

Karyology

Chromosome number (2n): **40**

Ploidy level (x): **4**

2C genome size [Mbp]: **3407.96**
1Cx monoploid genome size [Mbp]: **851.99**
Genomic GC content: **38.3 %**

Taxon origin

Origin in the Czech Republic: **archaeophyte**
Invasion status: **naturalized**
Geographic origin: **Europe, Mediterranean**
Period of introduction: **Neolithic (5600-4200 BCE)**
Introduction pathway: **unintentional - agriculture**

Ecological indicator values

Ellenberg-type indicator values

Light indicator value: **7 - half-light plant, mostly occurring at full light, but also in the shade up to about 30% of diffuse radiation incident in an open area**

Temperature indicator value: **7 - heat indicator, occurring in relatively warm lowlands**

Moisture indicator value: **4 - transition between values 3 and 5**

Reaction indicator value: **8 - transition between values 7 and 9, occurring mostly in calcium-rich conditions**

Nutrient indicator value: **6 - transition between values 5 and 7**

Salinity indicator value: **1 - salt tolerant, mostly on low-salt to salt-free soils, but occasionally on slightly salty soils**

Indicator values for disturbance

Whole-community disturbance frequency indicator value: **0.49**

Herb layer disturbance frequency indicator value: **0.49**

Whole-community disturbance severity indicator value: **1**

Herb layer disturbance severity indicator value: **1**

Whole-community structure based disturbance indicator value: **0.77**

Herb layer structure-based disturbance indicator value: **0.85**

Habitat and sociology

Occurrence in habitats

9 Sand grasslands and rock-outcrop vegetation

9F Basiphilous vegetation of spring therophytes and succulents: **1 - rare occurrence**

13 Anthropogenic vegetation

13A Annual vegetation of ruderal habitats: **1 - rare occurrence**

13B Annual vegetation of arable land: **2 - optimum**

13D Perennial thermophilous ruderal vegetation: **1 - rare occurrence**

Affinity to the forest environment

Affinity to the forest environment in Thermophyticum: **0 - taxon that does not spontaneously occur in Czech forests**

Affinity to the forest environment in Mesophyticum and Oreophyticum: **0 - taxon that does not spontaneously occur in Czech forests**

Diagnostic taxon

Diagnostic taxon of associations: [XBA01 *Caucalido platycarpi-Conringietum orientalis*](#), [XBA04 *Stachyo annuae-Setarietum pumilae*](#)

Constant taxon

Constant taxon of associations: [XBA04 *Stachyo annuae-Setarietum pumilae*](#)

Ecological specialization indices

Ecological specialization index for all vegetation types: **6.2**

Ecological specialization index for non-forest vegetation: **6.2**

Colonization ability

Index of colonization success (ICS): **2**

Index of colonization potential (ICP): **5**

Optimum successional age [years]: **4**

Distribution and frequency

Floristic zone: **northern temperate, southern temperate, submeridional, meridional**

Floristic region: **Europe, Western Asia**

Distribution range extension along the continentality gradient: **6**

Elevational belt in the Czech Republic: **lowlands, colline belt**

Occurrence frequency in the basic grid mapping cells and quadrants of the basic grid mapping cells: 143

taxon.data.freq_in_quad: 290

Commonness in vegetation plots from the Czech Republic

Occurrence frequency in vegetation plots: **0.3 %**

Occurrence frequency in vegetation plots with a cover above 5%: **5.3 %**

Occurrence frequency in vegetation plots with a cover above 25%: **0 %**

Occurrence frequency in vegetation plots with a cover above 50%: **0 %**

Mean percentage cover in vegetation plots: **3 %**

Maximum percentage cover in vegetation plots: **23 %**

Number of habitats with taxon occurrence in the Czech Republic

Number of narrow habitats in which the taxon occurs: **4**

Number of narrow habitats in which the taxon has its optimum: **1**

Number of broad habitats in which the taxon occurs: **2**

Number of broad habitats in which the taxon has its optimum: **1**

Threats and protection

Red List 2017 (national categories): **C3 - vulnerable taxon**

Red List 2017 (IUCN categories): **NT - near threatened**

Legal protection: **not protected by law**