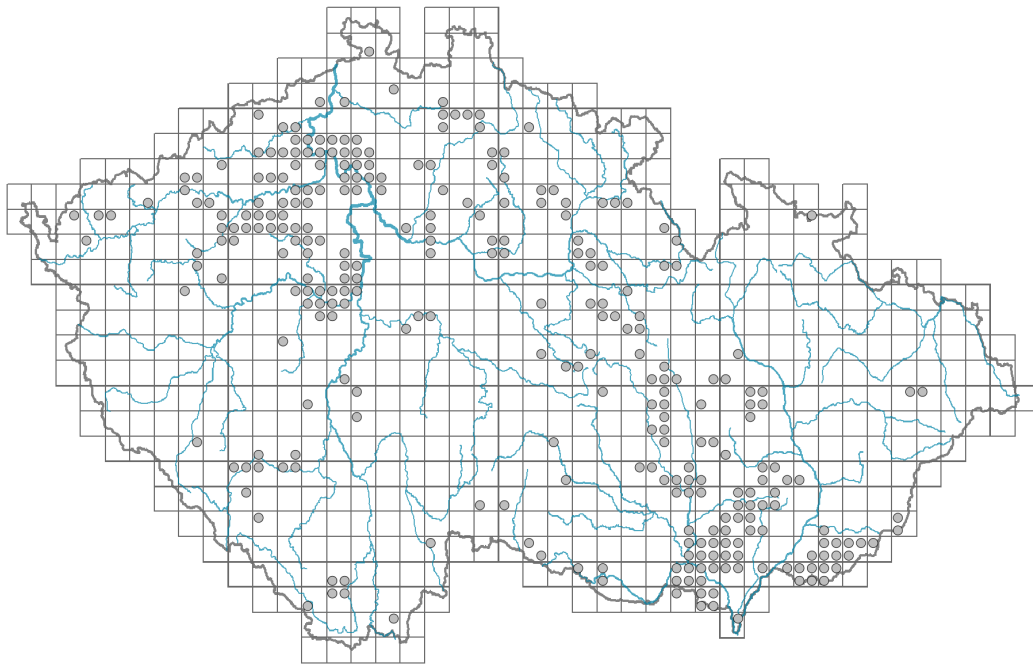


Anemone sylvestris

Distribution



Map info	
	revised records
	unrevised records
On the map are not visualized records without the coordinates and records marked as incorrect or doubtful.	

Habitus and growth type

Height [m]: **0.15-0.5**

Growth form: **clonal herb**

Life form: **hemicryptophyte (geophyte)**

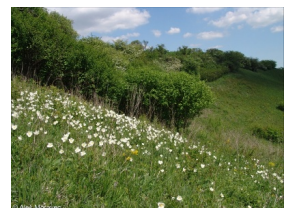
Life strategy: **CS - competitor/stress-tolerator**

Life strategy (Pierce method based on leaf traits): **S**

Life strategy (Pierce method, C-score): **7.2 %**

Life strategy (Pierce method, S-score): **92.8 %**

Life strategy (Pierce method, R-score): **0 %**



Leaf

Leaf presence and metamorphosis: **leaves present, not modified**

Leaf arrangement (phyllotaxis): **rosulate**

Leaf shape: **compound - ternate, compound - palmate (5-foliate)**

Stipules: **absent**

Petiole: **present**

Leaf life span: **summer green**

Leaf anatomy: **scleromorphic, mesomorphic**



Flower

Flowering period [month]: **May-June**

Flowering phase: **4 Fagus sylvatica-Galeobdolon (start of mid-spring)**

Flower colour: **white**

Flower symmetry: **actinomorphic**

Perianth type: **homochlamydeous**

Perianth fusion: **free**

Inflorescence type: **flores solitarii**

Dicliny: **synoecious**

Generative reproduction type: **facultative allogamy**

Pollination syndrome: **insect-pollination, selfing**



© Pavel Veselý

Fruit, seed and dispersal

Fruit type: **dry fruit - head of achenes**

Fruit colour: **brown**

Reproduction type: **by seed/spores and vegetatively**

Dispersal unit (diaspore): **fruit, infructescence or its part**

Dispersal strategy: **Epilobium (mainly anemochory and autochory)**

Myrmecochory: **non-myrmecochorous (a) nv**



© Pavel Veselý

Belowground organs and clonality

Shoot metamorphosis: **rhizome-like pleiocorm**

Root metamorphosis: **root shoot**

Storage organ: **rhizome-like pleiocorm**

Type of clonal growth organ: **root with adventitious buds**

Freely dispersible organs of clonal growth: **absent**

Shoot life span (cyclicity): **dicyclic or polycyclic shoots prevailing**

Branching type of stem-derived organs of clonal growth: **sympodial**

Primary root: **absent**

Persistence of the clonal growth organ [year]:

Number of clonal offspring: **2.7**

Lateral spreading distance by clonal growth [m]: **0.05**

Clonal index: **3**

Position of root buds: **lateral roots**

Role of root buds in life-history of a plant: **additive**

Bud bank

Number of buds per shoot at the soil surface (root buds excluded):

Number of buds per shoot at a depth of 0–10 cm (root buds excluded): **13**

Number of buds per shoot at a depth greater than 10 cm (root buds excluded):

Size of the belowground bud bank (root buds excluded): **18**

Depth of the belowground bud bank (root buds excluded) [cm]: **4**

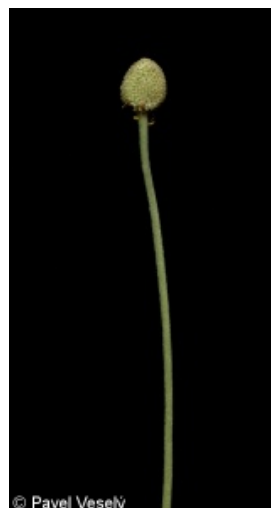
Number of buds per shoot at the soil surface (root buds included):

Number of buds per shoot at a depth of 0–10 cm (root buds included): **21**

Number of buds per shoot at a depth greater than 10 cm (root buds included):

Size of the belowground bud bank (root buds included): **41**

Depth of the belowground bud bank (root buds included) [cm]: **8**



© Pavel Veselý



© Pavel Veselý

Trophic mode

Parasitism and mycoheterotrophy: **autotrophic**

Carnivory: **non-carnivorous**

Symbiotic nitrogen fixation: **no nitrogen-fixing symbionts**

Karyology

Chromosome number (2n): **16**

Ploidy level (x): **2**

2C genome size [Mbp]: **15798.31**

1Cx monoploid genome size [Mbp]: **7899.16**

Genomic GC content: **43.6 %**

Taxon origin

Origin in the Czech Republic: **native**

Ecological indicator values

Ellenberg-type indicator values

Light indicator value: **6 - transition between values 5 and 7; rarely at less than 20% of diffuse radiation incident in an open area**

Temperature indicator value: **7 - heat indicator, occurring in relatively warm lowlands**

Moisture indicator value: **3 - missing on damp soil**

Reaction indicator value: **8 - transition between values 7 and 9, occurring mostly in calcium-rich conditions**

Nutrient indicator value: **3 - occurring at nutrient-poor sites more frequently than at average sites and exceptionally at rich sites**

Salinity indicator value: **0 - not salt tolerant, glycophyte**

Indicator values for disturbance

Whole-community disturbance frequency indicator value: **-0.82**

Herb layer disturbance frequency indicator value: **-0.38**

Whole-community disturbance severity indicator value: **0.19**

Herb layer disturbance severity indicator value: **0.21**

Whole-community structure based disturbance indicator value: **0.39**

Herb layer structure-based disturbance indicator value: **0.5**

Habitat and sociology

Occurrence in habitats

6 Meadows and mesic pastures

6A Mesic Arrhenatherum meadows: **1 - rare occurrence**

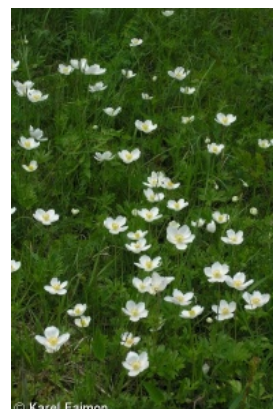
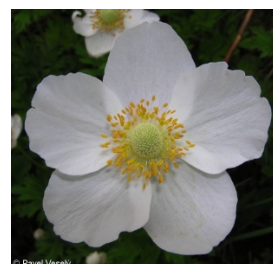
8 Dry grasslands

8B Submediterranean dry grasslands on rock outcrops: **1 - rare occurrence**

8C Narrow-leaved sub-continental steppes: **1 - rare occurrence**

8D Broad-leaved dry grasslands: **2 - optimum**

8F Thermophilous forest fringe vegetation: **2 - optimum**



11 Heathlands and scrub

11L Tall mesic and xeric shrub: **1 - rare occurrence**

11N Low xeric scrub: **1 - rare occurrence**

12 Forests

12F Limestone beech forests: **1 - rare occurrence**

12H Peri-Alpidic basiphilous thermophilous oak forests: **1 - rare occurrence**

12O Peri-Alpidic pine forests: **1 - rare occurrence**

12W Pine and larch plantations: **1 - rare occurrence**

Affinity to the forest environment

Affinity to the forest environment in Thermophyticum: **2.2 - taxon occurring partly in the forest, but mainly in open vegetation**

Affinity to the forest environment in Mesophyticum and Oreophyticum: **2.2 - taxon occurring partly in the forest, but mainly in open vegetation**

Diagnostic taxon

Diagnostic taxon of associations: [THE02 *Cirsio pannonici-Seslerietum caeruleae*](#)

Ecological specialization indices

Ecological specialization index for all vegetation types: **5.5**

Ecological specialization index for non-forest vegetation: **5.7**

Ecological specialization index for forest vegetation: **5.5**

Colonization ability

Index of colonization success (ICS): **1**

Index of colonization potential (ICP): **1**

Distribution and frequency

Floristic zone: **boreal, northern temperate, southern temperate, submeridional**

Floristic region: **Europe, Siberia**

Continental degree: **7**

Distribution range extension along the continentality gradient: **5**

Elevational belt in the Czech Republic: **lowlands, colline belt, submontane belt**

Occurrence frequency in the basic grid mapping cells and quadrants of the basic grid mapping cells: **177**

taxon.data.freq_in_quad: **294**

Commonness in vegetation plots from the Czech Republic

Occurrence frequency in vegetation plots: **0.2 %**

Occurrence frequency in vegetation plots with a cover above 5%: **21.7 %**

Occurrence frequency in vegetation plots with a cover above 25%: **6.5 %**

Occurrence frequency in vegetation plots with a cover above 50%: **0 %**

Mean percentage cover in vegetation plots: **6.2 %**

Maximum percentage cover in vegetation plots: **38 %**

Number of habitats with taxon occurrence in the Czech Republic

Number of narrow habitats in which the taxon occurs: **11**

Number of narrow habitats in which the taxon has its optimum: **2**

Number of broad habitats in which the taxon occurs: **4**

Number of broad habitats in which the taxon has its optimum: **1**



Threats and protection

Red List 2017 (national categories): **C2b - endangered taxon, rare and declining**

Red List 2017 (IUCN categories): **EN - endangered**

Legal protection: **vulnerable taxon**