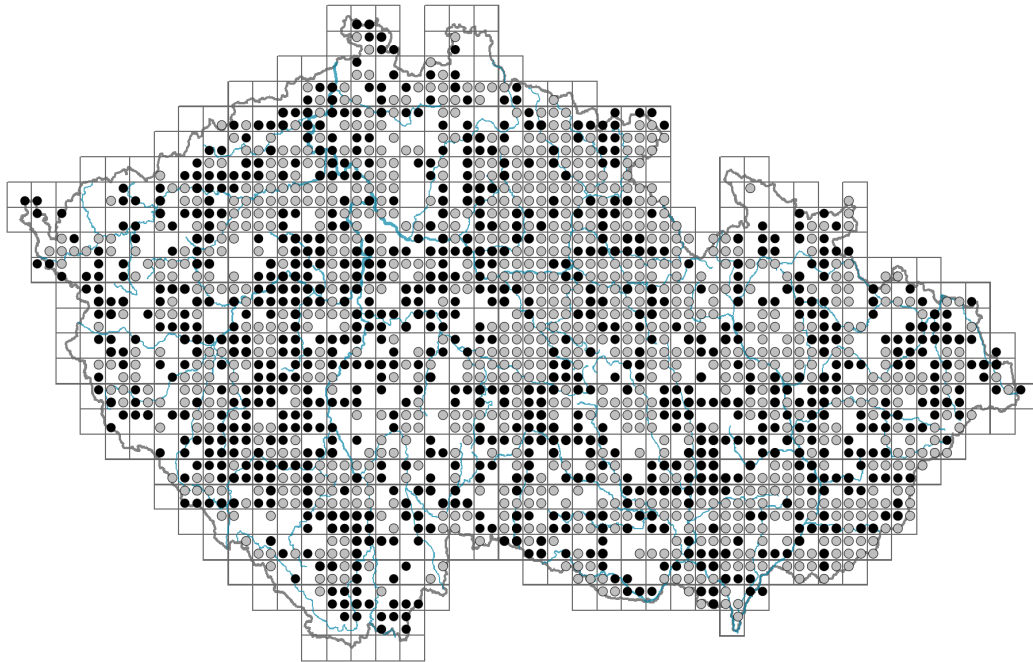


# Arctium tomentosum

## Distribution



© Pavel Veselý

### Map info

● revised records

○ unrevised records

On the map are not visualized records without the coordinates and records marked as incorrect or doubtful.

## Habitus and growth type

Height [m]: **0.5-2.3**

Growth form: **monocarpic perennial non-clonal herb**

Life form: **hemicryptophyte**

Life strategy: **C - competitor**



© Pavel Veselý

## Leaf

Leaf presence and metamorphosis: **leaves present, not modified**

Leaf arrangement (phyllotaxis): **alternate**

Leaf shape: **simple - entire**

Stipules: **absent**

Petiole: **present**

Leaf life span: **summer green**

Leaf anatomy: **scleromorphic, mesomorphic**



© Miroslav Pátek



© Miroslav Pátek

## Flower

Flowering period [month]: **July-September**

Flowering phase: **8 Clematis vitalba-Galium sylvaticum (mid-summer)**

Flower colour: **white, red-violet**

Flower symmetry: **actinomorphic**

Perianth type: **calyx reduced, corolla present**

Perianth fusion: **fused**

Shape of the sympetalous corolla or syntepalous perianth: **tubular**

Calyx fusion: **pappus**

Inflorescence type: **racemus ex corymbis anthodiorum compositus**

Dicliny: **synoecious**

Generative reproduction type: **mixed mating**

Pollination syndrome: **insect-pollination, selfing**

## Fruit, seed and dispersal

Fruit type: **dry fruit - achene/cypsela/samara**

Fruit colour: **brown**

Reproduction type: **only by seed/spores**

Dispersal unit (diaspore): **fruit, infrutescence or its part**

Dispersal strategy: **Bidens (mainly autochory and epizoochory)**

Myrmecochory: **probably non-myrmecochorous**

## Belowground organs and clonality

Root metamorphosis: **primary storage root**

Storage organ: **primary storage root**

Shoot life span (cyclicity): **dicyclic or polycyclic shoots prevailing**

Primary root: **present**

### Bud bank

Number of buds per shoot at the soil surface (root buds excluded):

Number of buds per shoot at a depth of 0–10 cm (root buds excluded):

Number of buds per shoot at a depth greater than 10 cm (root buds excluded):

Size of the belowground bud bank (root buds excluded):

Depth of the belowground bud bank (root buds excluded) [cm]:

Number of buds per shoot at the soil surface (root buds included):

Number of buds per shoot at a depth of 0–10 cm (root buds included):

Number of buds per shoot at a depth greater than 10 cm (root buds included):

Size of the belowground bud bank (root buds included):

Depth of the belowground bud bank (root buds included) [cm]:

## Trophic mode

Parasitism and mycoheterotrophy: **autotrophic**

Carnivory: **non-carnivorous**

Symbiotic nitrogen fixation: **no nitrogen-fixing symbionts**

## Karyology

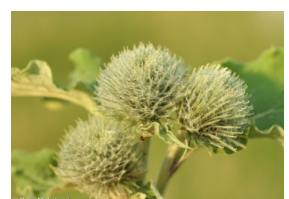
Chromosome number (2n): **36**

Ploidy level (x): **2**

2C genome size [Mbp]: **2945.32**

1Cx monoploid genome size [Mbp]: **1472.66**

Genomic GC content: **39 %**



## Taxon origin

Origin in the Czech Republic: **archaeophyte**

Invasion status: **naturalized**

Geographic origin: **Europe**

Period of introduction: **Neolithic (5600-4200 BCE)**

Introduction pathway: **unintentional - anthropogenic**



## Ecological indicator values

### Ellenberg-type indicator values

Light indicator value: **7 - half-light plant, mostly occurring at full light, but also in the shade up to about 30% of diffuse radiation incident in an open area**

Temperature indicator value: **5 - moderate heat indicator, occurring from lowland to montane belt, mainly in submontane-temperate areas**

Moisture indicator value: **5 - indicator of fresh soils, focus on soils of average moisture, missing on wet and on soils that frequently dry out**

Reaction indicator value: **8 - transition between values 7 and 9, occurring mostly in calcium-rich conditions**

Nutrient indicator value: **8 - pronounced nutrient indicator**

Salinity indicator value: **1 - salt tolerant, mostly on low-salt to salt-free soils, but occasionally on slightly salty soils**

### Indicator values for disturbance

Whole-community disturbance frequency indicator value: **-0.58**

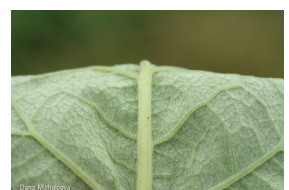
Herb layer disturbance frequency indicator value: **-0.31**

Whole-community disturbance severity indicator value: **0.66**

Herb layer disturbance severity indicator value: **0.66**

Whole-community structure based disturbance indicator value: **0.56**

Herb layer structure-based disturbance indicator value: **0.58**



## Habitat and sociology

### Occurrence in habitats

4 Wetland and riverine herbaceous vegetation

4A Reed-beds of eutrophic still waters: **1 - rare occurrence**

4D Riverine reed vegetation: **1 - rare occurrence**

4I Vegetation of nitrophilous annual hygrophilous herbs: **1 - rare occurrence**

4K Petasites fringes of montane brooks: **1 - rare occurrence**

4L Nitrophilous herbaceous fringes of lowland rivers: **1 - rare occurrence**

6 Meadows and mesic pastures

6A Mesic Arrhenatherum meadows: **1 - rare occurrence**

6D Alluvial meadows of lowland rivers: **1 - rare occurrence**

6G Vegetation of wet disturbed soils: **1 - rare occurrence**

8 Dry grasslands

8F Thermophilous forest fringe vegetation: **1 - rare occurrence**

10 Saline vegetation

10I Inland saline meadows: **1 - rare occurrence**

11 Heathlands and scrub



11J Willow galleries of loamy and sandy river banks: **1 - rare occurrence**

11L Tall mesic and xeric shrub: **1 - rare occurrence**

11R Scrub and pioneer woodland of forests clearings: **2 - optimum**

## 12 Forests

12B Alluvial forests: **1 - rare occurrence**

12D Ravine forests: **1 - rare occurrence**

12T Robinia pseudacacia plantations: **1 - rare occurrence**

12U Plantations of broad-leaved non-native trees: **1 - rare occurrence**

12W Pine and larch plantations: **1 - rare occurrence**

## 13 Anthropogenic vegetation

13A Annual vegetation of ruderal habitats: **2 - optimum**

13B Annual vegetation of arable land: **1 - rare occurrence**

13C Annual vegetation of trampled habitats: **1 - rare occurrence**

13D Perennial thermophilous ruderal vegetation: **2 - optimum**

13E Perennial nitrophilous herbaceous vegetation of mesic sites: **2 - optimum**

13F Herbaceous vegetation of forests clearings and Rubus scrub: **1 - rare occurrence**

## Affinity to the forest environment

Affinity to the forest environment in Thermophyticum: **2.2 - taxon occurring partly in the forest, but mainly in open vegetation**

Affinity to the forest environment in Mesophyticum and Oreophyticum: **2.2 - taxon occurring partly in the forest, but mainly in open vegetation**

## Diagnostic taxon

Diagnostic taxon of alliances: [XCE Arction lappae](#)

Diagnostic taxon of associations: [XCE01 Urtico urentis-Chenopodietum boni-henrici](#), [XCE02 Arctietum lappae](#)

## Constant taxon

Constant taxon of alliances: [XCE Arction lappae](#)

Constant taxon of associations: [XBG06 Atriplicetum roseae](#), [XCE01 Urtico urentis-Chenopodietum boni-henrici](#), [XCE02 Arctietum lappae](#)

## Dominant taxon

Dominant taxon of associations: [XCE02 Arctietum lappae](#)

## Ecological specialization indices

Ecological specialization index for all vegetation types: **4.5**

Ecological specialization index for non-forest vegetation: **4.6**

Ecological specialization index for forest vegetation: **4.8**

## Colonization ability

Index of colonization success (ICS): **6**

Index of colonization potential (ICP): **7**

Optimum successional age [years]: **8**

## Distribution and frequency

Floristic zone: **boreal, northern temperate, southern temperate, submeridional, meridional**

Floristic region: **Europe, Western Asia**

Continentality degree: **6**

Distribution range extension along the continentality gradient: **6**

Elevational belt in the Czech Republic: **lowlands, colline belt, submontane belt (montane belt)**

Occurrence frequency in the basic grid mapping cells and quadrants of the basic grid mapping cells: 608

taxon.data.freq\_in\_quad: 1790

Commonness in vegetation plots from the Czech Republic

Occurrence frequency in vegetation plots: **1.5 %**

Occurrence frequency in vegetation plots with a cover above 5%: **23 %**

Occurrence frequency in vegetation plots with a cover above 25%: **11.1 %**

Occurrence frequency in vegetation plots with a cover above 50%: **5.9 %**

Mean percentage cover in vegetation plots: **9.4 %**

Maximum percentage cover in vegetation plots: **88 %**

Number of habitats with taxon occurrence in the Czech Republic

Number of narrow habitats in which the taxon occurs: **24**

Number of narrow habitats in which the taxon has its optimum: **4**

Number of broad habitats in which the taxon occurs: **7**

Number of broad habitats in which the taxon has its optimum: **2**

### **Threats and protection**

Red List 2017 (national categories): **taxon is not on the Red List**

Red List 2017 (IUCN categories): **LC(NA) - least concern (taxon is not on the Red List)**

Legal protection: **not protected by law**