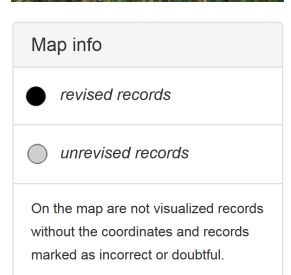
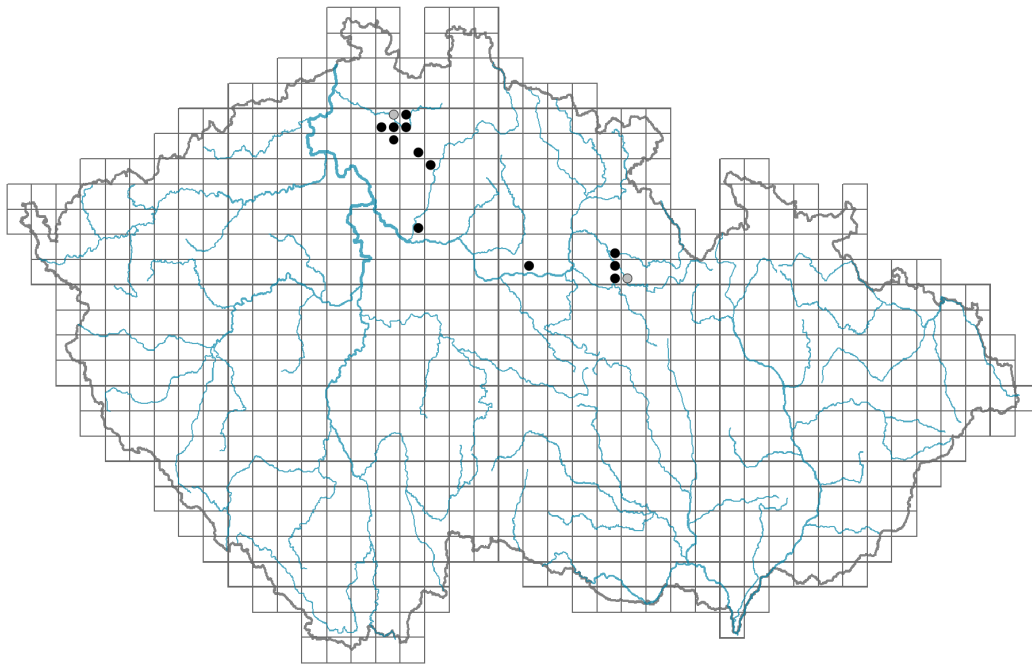


Astragalus arenarius

Distribution



Habitus and growth type

Height [m]: **0.15-0.35**

Growth form: **polycarpic perennial non-clonal herb**

Life form: **hemicryptophyte**

Life strategy: **CS - competitor/stress-tolerator**

Leaf

Leaf presence and metamorphosis: **leaves present, not modified**

Leaf arrangement (phyllotaxis): **alternate**

Leaf shape: **compound - imparipinnate**

Stipules: **present**

Petiole: **present**

Leaf life span: **summer green**

Leaf anatomy: **scleromorphic, mesomorphic**

Flower

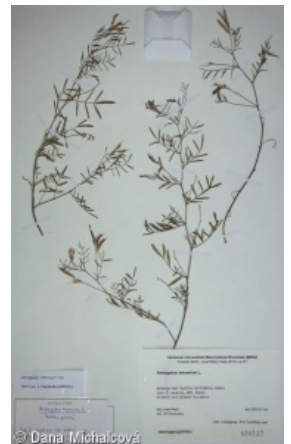
Flowering period [month]: **June-July**

Flowering phase: **6 Cornus sanguinea-Melica uniflora (start of early summer)**

Flower colour: **red-violet**

Flower symmetry: **zygomorphic**

Perianth type: **calyx and corolla**



Perianth fusion: **free**
 Calyx fusion: **synsepalous**
 Inflorescence type: **racemus**
 Dicliny: **synoecious**
 Pollination syndrome: **insect-pollination**

Fruit, seed and dispersal

Fruit type: **dry fruit - legume**
 Fruit colour: **brown**
 Reproduction type: **only by seed/spores**
 Dispersal unit (diaspore): **seed**
 Dispersal strategy: **Allium (mainly autochory)**
 Myrmecochory: **probably non-myrmecochorous nv**

Belowground organs and clonality

Shoot metamorphosis: **pleiocorm**
 Storage organ: **pleiocorm**
 Shoot life span (cyclicality): **monocyclic shoots prevailing**
 Branching type of stem-derived organs of clonal growth: **sympodial**
 Primary root: **present**

Bud bank

Number of buds per shoot at the soil surface (root buds excluded): **5**
 Number of buds per shoot at a depth of 0–10 cm (root buds excluded): **10**
 Number of buds per shoot at a depth greater than 10 cm (root buds excluded): **0**
 Size of the belowground bud bank (root buds excluded): **15**
 Depth of the belowground bud bank (root buds excluded) [cm]: **4**
 Number of buds per shoot at the soil surface (root buds included): **5**
 Number of buds per shoot at a depth of 0–10 cm (root buds included): **10**
 Number of buds per shoot at a depth greater than 10 cm (root buds included): **0**
 Size of the belowground bud bank (root buds included): **15**
 Depth of the belowground bud bank (root buds included) [cm]: **4**

Trophic mode

Parasitism and mycoheterotrophy: **autotrophic**
 Carnivory: **non-carnivorous**
 Symbiotic nitrogen fixation: **symbiosis with rhizobia**

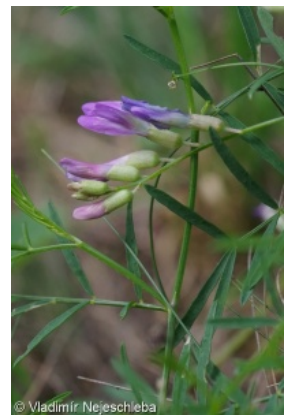
Taxon origin

Origin in the Czech Republic: **native**

Ecological indicator values

Ellenberg-type indicator values

Light indicator value: **8 - light plant, only exceptionally occurring at less than 40% of diffuse radiation incident in an open area**



Temperature indicator value: **7 - heat indicator, occurring in relatively warm lowlands**

Moisture indicator value: **2 - transition between values 1 and 3**

Reaction indicator value: **7 - indicator of slightly acidic to slightly basic conditions, never occurring in very acidic conditions**

Nutrient indicator value: **3 - occurring at nutrient-poor sites more frequently than at average sites and exceptionally at rich sites**

Salinity indicator value: **0 - not salt tolerant, glycophyte**



Habitat and sociology

Occurrence in habitats

9 Sand grasslands and rock-outcrop vegetation

9B Open vegetation of acidic sands: **1 - rare occurrence**

9C Festuca grasslands on acidic sands: **1 - rare occurrence**

12 Forests

12L Boreo-continental pine forests: **1 - rare occurrence**

Affinity to the forest environment

Affinity to the forest environment in Thermophyticum: **0 - taxon that does not spontaneously occur in Czech forests**

Affinity to the forest environment in Mesophyticum and Oreophyticum: **0 - taxon that does not spontaneously occur in Czech forests**

Colonization ability

Index of colonization success (ICS): **1**

Distribution and frequency

Floristic zone: **northern temperate, southern temperate**

Floristic region: **Europe**

Continental degree: **6**

Distribution range extension along the continentality gradient: **3**

Elevational belt in the Czech Republic: **lowlands, colline belt**

Occurrence frequency in the basic grid mapping cells and quadrants of the basic grid mapping cells: **10**

taxon.data.freq_in_quad: **14**

Number of habitats with taxon occurrence in the Czech Republic

Number of narrow habitats in which the taxon occurs: **3**

Number of narrow habitats in which the taxon has its optimum: **0**

Number of broad habitats in which the taxon occurs: **2**

Number of broad habitats in which the taxon has its optimum: **0**

Threats and protection

Red List 2017 (national categories): **C1t - critically threatened taxon, declining**

Red List 2017 (IUCN categories): **CR - critically endangered**

Legal protection: **critically threatened taxon**