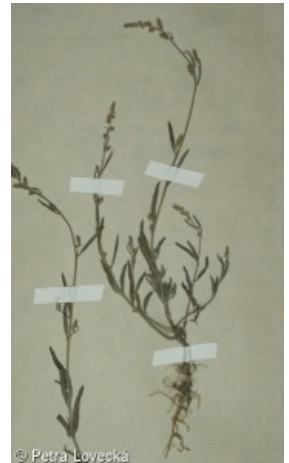
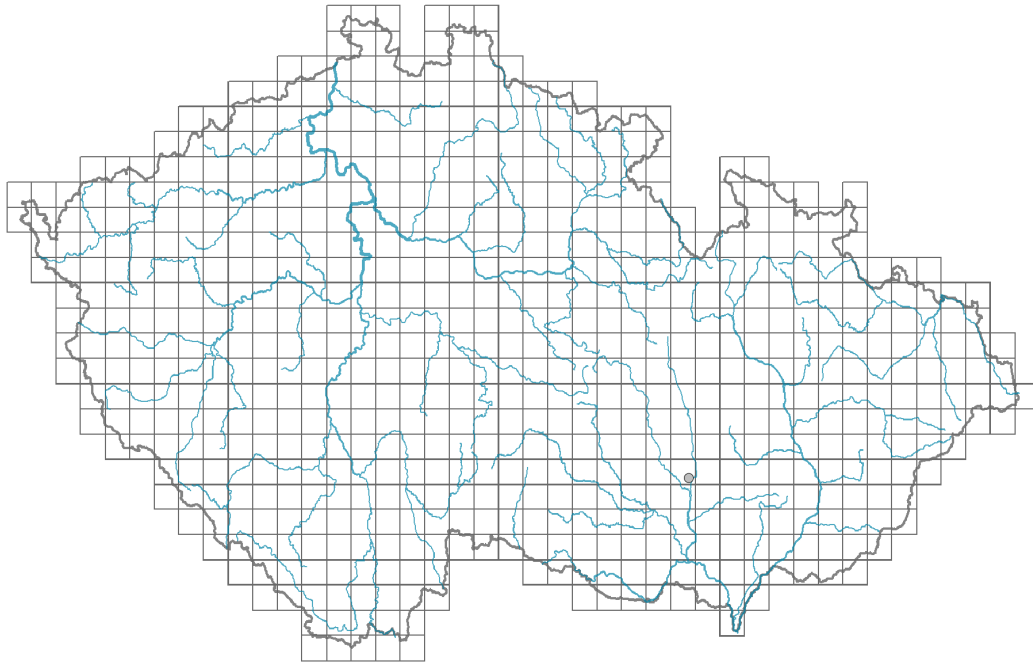


Atriplex littoralis

Distribution



© Petra Lovecká

Map info

● revised records

○ unrevised records

On the map are not visualized records without the coordinates and records marked as incorrect or doubtful.

Habitus and growth type

Growth form: **annual herb**

Life form: **therophyte**

Life strategy: **S - stress-tolerator**

Life strategy (Pierce method based on leaf traits): **CR**

Life strategy (Pierce method, C-score): **56.3 %**

Life strategy (Pierce method, S-score): **0 %**

Life strategy (Pierce method, R-score): **43.7 %**



© Petra Lovecká

Leaf

Leaf presence and metamorphosis: **leaves present, not modified**

Leaf arrangement (phyllotaxis): **alternate**

Leaf shape: **simple - entire**

Stipules: **absent**

Petiole: **present**

Leaf life span: **summer green**

Leaf anatomy: **mesomorphic**



© Petra Lovecká

Flower

Flowering phase: **8 Clematis vitalba-Galium sylvaticum (mid-summer)**

Flower colour: **green**

Flower symmetry: **actinomorphic**
Perianth type: **homochlamydeous, sometimes absent**
Perianth fusion: **free**
Inflorescence type: **pseudospica**
Dicliny: **monoecious**
Generative reproduction type: **mixed mating**
Pollination syndrome: **wind-pollination, insect-pollination**

Fruit, seed and dispersal

Fruit type: **dry fruit - achene/cypsela/samara**
Fruit colour: **brown, black**
Reproduction type: **only by seed/spores**
Myrmecochory: **non-myrmecochorous (b)**

Belowground organs and clonality

Shoot life span (cyclicity): **monocyclic shoots prevailing**
Primary root: **present**
Bud bank
Number of buds per shoot at the soil surface (root buds excluded): **5**
Number of buds per shoot at a depth of 0-10 cm (root buds excluded): **0**
Number of buds per shoot at a depth greater than 10 cm (root buds excluded): **0**
Size of the belowground bud bank (root buds excluded): **5**
Depth of the belowground bud bank (root buds excluded) [cm]: **1**
Number of buds per shoot at the soil surface (root buds included): **5**
Number of buds per shoot at a depth of 0-10 cm (root buds included): **0**
Number of buds per shoot at a depth greater than 10 cm (root buds included): **0**
Size of the belowground bud bank (root buds included): **5**
Depth of the belowground bud bank (root buds included) [cm]: **1**

Trophic mode

Parasitism and mycoheterotrophy: **autotrophic**
Carnivory: **non-carnivorous**
Symbiotic nitrogen fixation: **no nitrogen-fixing symbionts**

Taxon origin

Origin in the Czech Republic: **neophyte**
Invasion status: **casual**
Geographic origin: **Europe, Mediterranean, North America**
Year of the first record in the wild: **1977**
Period of introduction: **Recent Past (1950-2000)**
Introduction pathway: **unintentional - anthropogenic**

Habitat and sociology

Affinity to the forest environment



Affinity to the forest environment in Thermophyticum: **0 - taxon that does not spontaneously occur in Czech forests**

Affinity to the forest environment in Mesophyticum and Oreophyticum: **0 - taxon that does not spontaneously occur in Czech forests**

Distribution and frequency

Floristic zone: **boreal, northern temperate, southern temperate, submeridional, meridional**

Floristic region: **Europe, Asia**

Occurrence frequency in the basic grid mapping cells and quadrants of the basic grid mapping cells: 2

taxon.data.freq_in_quad: 2

Threats and protection

Red List 2017 (national categories): **taxon is not on the Red List**

Red List 2017 (IUCN categories): **LC(NA) - least concern (taxon is not on the Red List)**

Legal protection: **not protected by law**