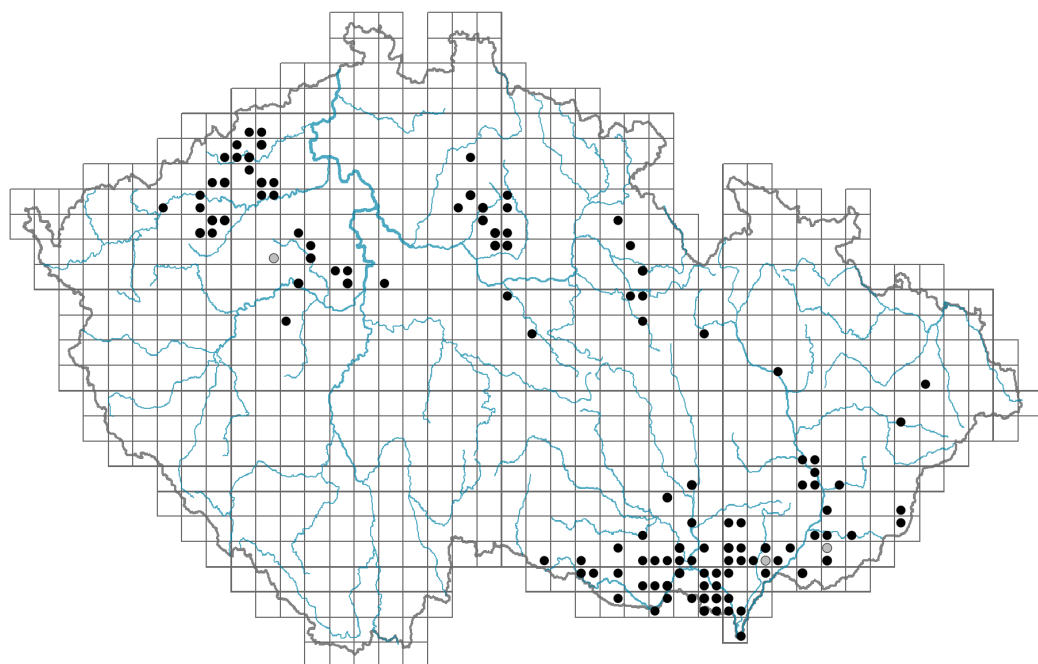


Ranunculus rionii

Distribution



Map info

● revised records

● unrevised records

On the map are not visualized records without the coordinates and records marked as incorrect or doubtful.

Habitus and growth type

Height [m]: **0.05-0.8**

Growth form: **clonal herb**

Life form: **therophyte (hydrophyte)**

Leaf

Leaf presence and metamorphosis: **leaves present, not modified**

Leaf arrangement (phyllotaxis): **alternate**

Leaf shape: **simple - palmately divided, simple - forked**

Stipules: **present**

Petiole: **present**

Leaf anatomy: **hydromorphic**

Flower

Flowering period [month]: **May-August**

Flower colour: **white**

Flower symmetry: **actinomorphic**

Perianth type: **calyx and corolla**

Perianth fusion: **free**

Calyx fusion: **aposepalous**

Inflorescence type: **flores solitarii**



Dicliny: **synoecious**

Generative reproduction type: **facultative autogamy**

Pollination syndrome: **selfing**

Fruit, seed and dispersal

Fruit type: **dry fruit - head of achenes**

Reproduction type: **by seed/spores and vegetatively**

Dispersal unit (diaspore): **fruit, infrutescence or its part, shoot fragment**

Dispersal strategy: **Wolffia (mainly hydrochory)**

Myrmecochory: **non-myrmecochorous (b)**

Trophic mode

Parasitism and mycoheterotrophy: **autotrophic**

Carnivory: **non-carnivorous**

Symbiotic nitrogen fixation: **no nitrogen-fixing symbionts**

Karyology

Chromosome number (2n): **16**

Ploidy level (x): **2**

2C genome size [Mbp]: **4735.16**

1Cx monoploid genome size [Mbp]: **2367.58**

Genomic GC content: **43.6 %**

Taxon origin

Origin in the Czech Republic: **native**

Ecological indicator values

Ellenberg-type indicator values

Light indicator value: **8 - light plant, only exceptionally occurring at less than 40% of diffuse radiation incident in an open area**

Temperature indicator value: **7 - heat indicator, occurring in relatively warm lowlands**

Moisture indicator value: **11 - aquatic plant rooted under water, but at least temporarily with leaves above the surface, or a plant floating on the water surface**

Reaction indicator value: **7 - indicator of slightly acidic to slightly basic conditions, never occurring in very acidic conditions**

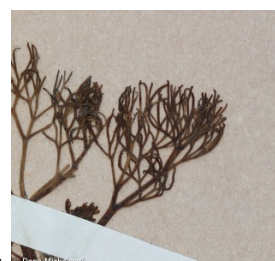
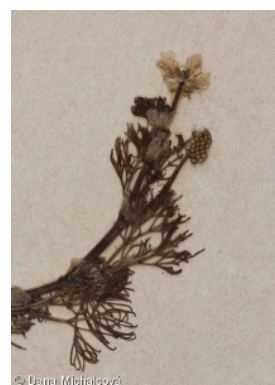
Nutrient indicator value: **7 - occurring at nutrient-rich sites more often than at average sites and only exceptionally at poor sites**

Salinity indicator value: **3 - β -mesohaline, mostly on soils with low salt content**

Habitat and sociology

Occurrence in habitats

3 Aquatic vegetation



3A Macrophytic vegetation of eutrophic and mesotrophic still waters: **2 - optimum**

4 Wetland and riverine herbaceous vegetation

4B Halophilous reed and sedge beds: **1 - rare occurrence**

Affinity to the forest environment

Affinity to the forest environment in Thermophyticum: **0 - taxon that does not spontaneously occur in Czech forests**

Affinity to the forest environment in Mesophyticum and Oreophyticum: **0 - taxon that does not spontaneously occur in Czech forests**

Diagnostic taxon

Diagnostic taxon of associations: [VBD04 *Batrachietum rionii*](#)

Constant taxon

Constant taxon of associations: [VBD04 *Batrachietum rionii*](#)

Dominant taxon

Dominant taxon of associations: [VBD04 *Batrachietum rionii*](#)

Ecological specialization indices

Ecological specialization index for all vegetation types: **4.6**

Ecological specialization index for non-forest vegetation: **4.7**

Distribution and frequency

Elevational belt in the Czech Republic: **lowlands, colline belt**

Occurrence frequency in the basic grid mapping cells and quadrants of the basic grid mapping cells: 82

taxon.data.freq_in_quad: 122

Commonness in vegetation plots from the Czech Republic

Occurrence frequency in vegetation plots: **0.1 %**

Occurrence frequency in vegetation plots with a cover above 5%: **37.5 %**

Occurrence frequency in vegetation plots with a cover above 25%: **31.3 %**

Occurrence frequency in vegetation plots with a cover above 50%: **18.8 %**

Mean percentage cover in vegetation plots: **20.9 %**

Maximum percentage cover in vegetation plots: **88 %**

Number of habitats with taxon occurrence in the Czech Republic

Number of narrow habitats in which the taxon occurs: **2**

Number of narrow habitats in which the taxon has its optimum: **1**

Number of broad habitats in which the taxon occurs: **2**

Number of broad habitats in which the taxon has its optimum: **1**

Threats and protection

Red List 2017 (national categories): **C2b - endangered taxon, rare and declining**

Red List 2017 (IUCN categories): **VU - vulnerable**

Legal protection: **critically threatened taxon**