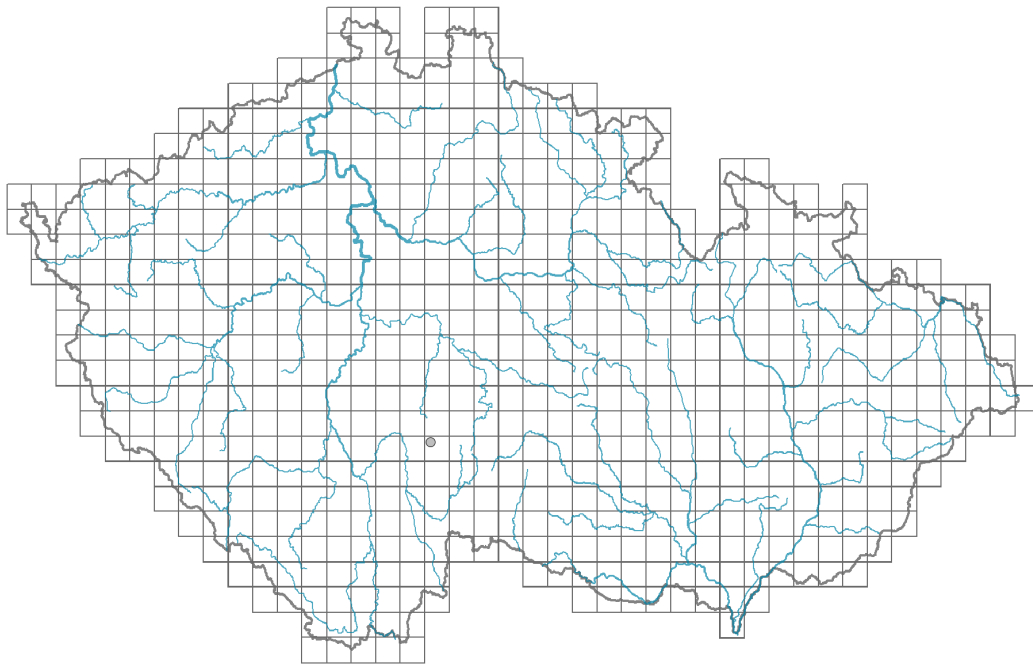


Bunium bulbocastanum

Distribution

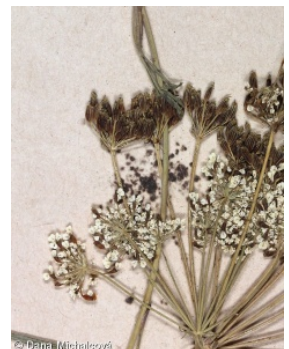


Map info

● revised records

○ unrevised records

On the map are not visualized records without the coordinates and records marked as incorrect or doubtful.



Habitus and growth type

Growth form: **polycarpic perennial non-clonal herb**

Life form: **geophyte**

Life strategy: **CSR - competitor/stress-tolerator/ruderal**

Life strategy (Pierce method based on leaf traits): **CR**

Life strategy (Pierce method, C-score): **45.7 %**

Life strategy (Pierce method, S-score): **0 %**

Life strategy (Pierce method, R-score): **54.3 %**

Leaf

Leaf presence and metamorphosis: **leaves present, not modified**

Leaf arrangement (phyllotaxis): **alternate**

Leaf shape: **simple - pinnately divided, compound - imparipinnate**

Stipules: **absent**

Petiole: **both present and absent**

Leaf life span: **summer green**

Flower

Flowering phase: **6 Cornus sanguinea-Melica uniflora (start of early summer)**

Flower colour: **white**

Flower symmetry: **actinomorphic**

Perianth type: **calyx reduced, corolla present**
 Perianth fusion: **free**
 Calyx fusion: **aposepalous**
 Inflorescence type: **umbella composita**
 Generative reproduction type: **facultative autogamy**
 Pollination syndrome: **insect-pollination, selfing**

Fruit, seed and dispersal

Fruit type: **dry fruit - cremocarp**
 Reproduction type: **only by seed/spores**
 Myrmecochory: **non-myrmecochorous (b)**

Belowground organs and clonality

Storage organ: **hypocotyl bulb**
 Primary root: **present**
 Bud bank
 Number of buds per shoot at the soil surface (root buds excluded): **5**
 Number of buds per shoot at a depth of 0–10 cm (root buds excluded): **5**
 Number of buds per shoot at a depth greater than 10 cm (root buds excluded): **0**
 Size of the belowground bud bank (root buds excluded): **10**
 Depth of the belowground bud bank (root buds excluded) [cm]: **3**
 Number of buds per shoot at the soil surface (root buds included): **5**
 Number of buds per shoot at a depth of 0–10 cm (root buds included): **5**
 Number of buds per shoot at a depth greater than 10 cm (root buds included): **0**
 Size of the belowground bud bank (root buds included): **10**
 Depth of the belowground bud bank (root buds included) [cm]: **3**

Trophic mode

Parasitism and mycoheterotrophy: **autotrophic**
 Carnivory: **non-carnivorous**
 Symbiotic nitrogen fixation: **no nitrogen-fixing symbionts**

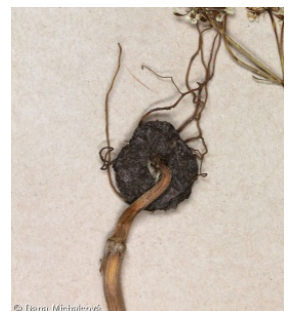
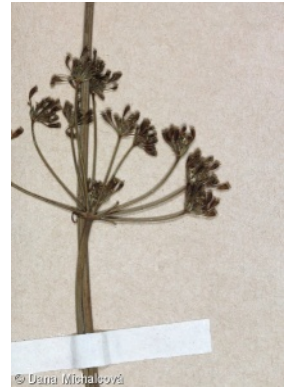
Taxon origin

Origin in the Czech Republic: **neophyte**
 Invasion status: **casual**
 Geographic origin: **Europe, Asia**
 Year of the first record in the wild: **1879**
 Period of introduction: **Late Modern Period (1800-1950)**
 Introduction pathway: **unintentional - agriculture**

Ecological indicator values

Ellenberg-type indicator values

Light indicator value: **7 - half-light plant, mostly occurring at full light, but also in the shade up to about 30% of diffuse radiation incident in an open area**



Temperature indicator value: **7 - heat indicator, occurring in relatively warm lowlands**

Moisture indicator value: **4 - transition between values 3 and 5**

Reaction indicator value: **9 - base and lime indicator, always occurring in calcium-rich conditions**

Nutrient indicator value: **4 - transition between values 3 and 5**

Salinity indicator value: **0 - not salt tolerant, glycophyte**

Habitat and sociology

Affinity to the forest environment

Affinity to the forest environment in Thermophyticum: **0 - taxon that does not spontaneously occur in Czech forests**

Affinity to the forest environment in Mesophyticum and Oreophyticum: **0 - taxon that does not spontaneously occur in Czech forests**

Distribution and frequency

Floristic zone: **northern temperate, southern temperate, submeridional, meridional**

Floristic region: **Europe**

Continentality degree: **2**

Distribution range extension along the continentality gradient: **2**

Occurrence frequency in the basic grid mapping cells and quadrants of the basic grid mapping cells: **1**

taxon.data.freq_in_quad: 1

Threats and protection

Red List 2017 (national categories): **taxon is not on the Red List**

Red List 2017 (IUCN categories): **LC(NA) - least concern (taxon is not on the Red List)**

Legal protection: **not protected by law**