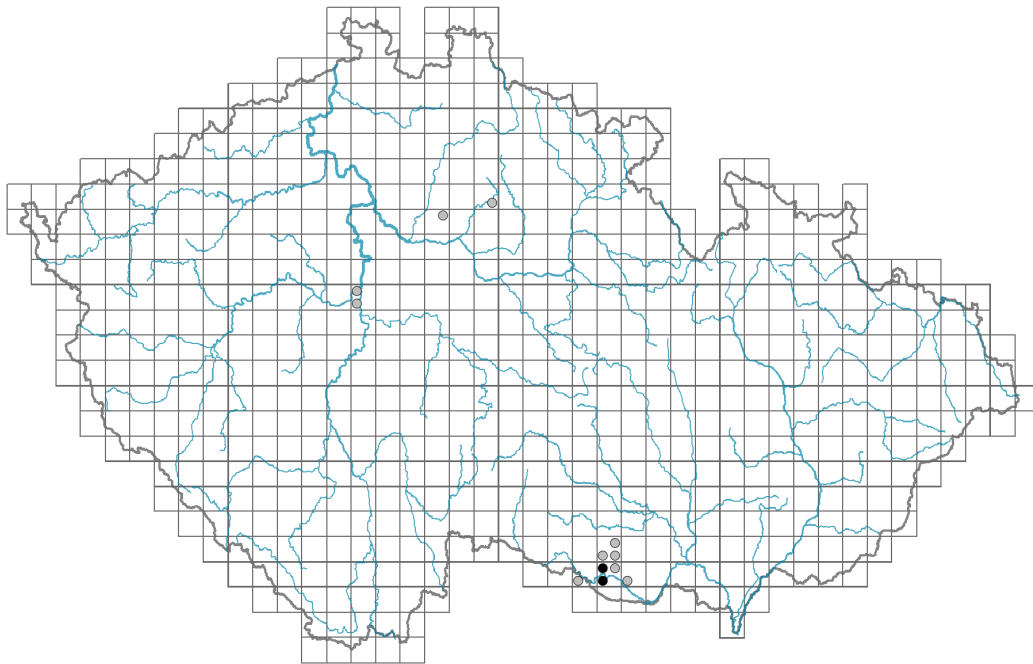


# *Bupleurum affine*

## Distribution



© Radim Cibulka

### Map info

● revised records

○ unrevised records

On the map are not visualized records without the coordinates and records marked as incorrect or doubtful.

## Habitus and growth type

Height [m]: **0.75**

Growth form: **annual herb**

Life form: **therophyte**

## Leaf

Leaf presence and metamorphosis: **leaves present, not modified**

Leaf arrangement (phyllotaxis): **alternate**

Leaf shape: **simple - entire**

Stipules: **absent**

Petiole: **mainly absent**

## Flower

Flowering period [month]: **July-August**

Flower colour: **yellow**

Flower symmetry: **actinomorphic**

Perianth type: **calyx absent, corolla present**

Perianth fusion: **free**

Inflorescence type: **umbella composita**



© Dana Michalová



© Dana Michalová

## Fruit, seed and dispersal

Fruit type: **dry fruit - cremocarp**

Fruit colour: **brown**

Dispersal unit (diaspore): **fruit, infrutescence or its part**

Dispersal strategy: **Allium (mainly autochory)**

Myrmecochory: **non-myrmecochorous (b)**

## Trophic mode

Parasitism and mycoheterotrophy: **autotrophic**

Carnivory: **non-carnivorous**

Symbiotic nitrogen fixation: **no nitrogen-fixing symbionts**

## Taxon origin

Origin in the Czech Republic: **native**

## Ecological indicator values

Ellenberg-type indicator values

Light indicator value: **8 - light plant, only exceptionally occurring at less than 40% of diffuse radiation incident in an open area**

Temperature indicator value: **7 - heat indicator, occurring in relatively warm lowlands**

Moisture indicator value: **3 - missing on damp soil**

Reaction indicator value: **8 - transition between values 7 and 9, occurring mostly in calcium-rich conditions**

Nutrient indicator value: **4 - transition between values 3 and 5**

Salinity indicator value: **0 - not salt tolerant, glycophyte**

## Habitat and sociology

Occurrence in habitats

8 Dry grasslands

8F Thermophilous forest fringe vegetation: **1 - rare occurrence**

Affinity to the forest environment

Affinity to the forest environment in Thermophyticum: **0 - taxon that does not spontaneously occur in Czech forests**

Affinity to the forest environment in Mesophyticum and Oreophyticum: **0 - taxon that does not spontaneously occur in Czech forests**

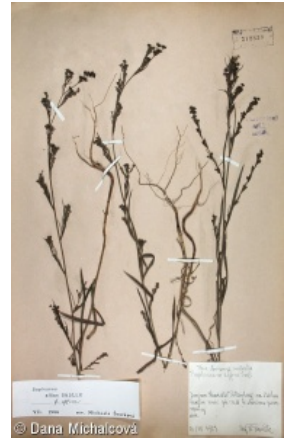
Colonization ability

Index of colonization success (ICS): **1**

## Distribution and frequency

Elevational belt in the Czech Republic: **colline belt**

Occurrence frequency in the basic grid mapping cells and quadrants of the basic grid mapping cells: **7**



taxon.data.freq\_in\_quad: 12

### Commonness in vegetation plots from the Czech Republic

Occurrence frequency in vegetation plots: **0 %**

Occurrence frequency in vegetation plots with a cover above 5%: **0 %**

Occurrence frequency in vegetation plots with a cover above 25%: **0 %**

Occurrence frequency in vegetation plots with a cover above 50%: **0 %**

Mean percentage cover in vegetation plots: **2 %**

Maximum percentage cover in vegetation plots: **2 %**

### Number of habitats with taxon occurrence in the Czech Republic

Number of narrow habitats in which the taxon occurs: **1**

Number of narrow habitats in which the taxon has its optimum: **0**

Number of broad habitats in which the taxon occurs: **1**

Number of broad habitats in which the taxon has its optimum: **0**

### Threats and protection

Red List 2017 (national categories): **C1r - critically threatened taxon, rare**

Red List 2017 (IUCN categories): **CR - critically endangered**

Legal protection: **critically threatened taxon**