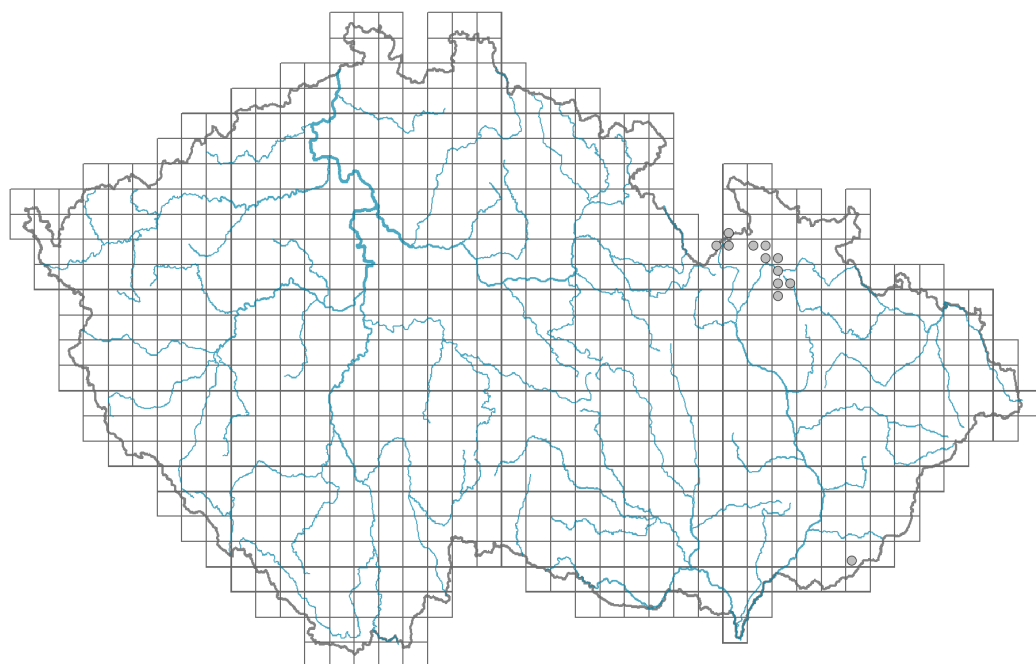


Campanula barbata

Distribution



Map info

● revised records

○ unrevised records

On the map are not visualized records without the coordinates and records marked as incorrect or doubtful.



Habitus and growth type

Height [m]: **0.1-0.3**

Growth form: **clonal herb**

Life form: **hemicryptophyte**

Life strategy: **CSR - competitor/stress-tolerator/ruderal**

Life strategy (Pierce method based on leaf traits): **R/CSR**

Life strategy (Pierce method, C-score): **18.4 %**

Life strategy (Pierce method, S-score): **28.9 %**

Life strategy (Pierce method, R-score): **52.7 %**

Leaf

Leaf presence and metamorphosis: **leaves present, not modified**

Leaf arrangement (phyllotaxis): **alternate, rosulate**

Leaf shape: **simple - entire**

Stipules: **absent**

Petiole: **both present and absent**

Leaf anatomy: **mesomorphic**



Flower

Flowering period [month]: **July-August**

Flowering phase: **6 Cornus sanguinea-Melica uniflora (start of early summer)**

Flower colour: **blue**
 Flower symmetry: **actinomorphic**
 Perianth type: **calyx and corolla**
 Perianth fusion: **fused**
 Shape of the sympetalous corolla or syntepalous perianth: **campanulate**
 Calyx fusion: **synsepalous**
 Inflorescence type: **racemus**
 Dicliny: **synoecious**
 Generative reproduction type: **facultative allogamy**
 Pollination syndrome: **insect-pollination, selfing**

Fruit, seed and dispersal

Fruit type: **dry fruit - capsule**
 Fruit colour: **brown**
 Reproduction type: **by seed/spores and vegetatively**
 Dispersal unit (diaspore): **seed**
 Dispersal strategy: **Allium (mainly autochory)**
 Myrmecochory: **non-myrmecochorous (b)**

Belowground organs and clonality

Shoot metamorphosis: **rhizome-like pleiocorm**
 Root metamorphosis: **primary storage root**
 Storage organ: **rhizome-like pleiocorm, primary storage root**
 Type of clonal growth organ: **epigeogenous rhizome**
 Freely dispersible organs of clonal growth: **absent**
 Shoot life span (cyclicity): **dicyclic or polycyclic shoots prevailing**
 Branching type of stem-derived organs of clonal growth: **sympodial**
 Primary root: **absent**
 Persistence of the clonal growth organ [year]:
 Number of clonal offspring:
 Lateral spreading distance by clonal growth [m]: **0.01**
 Clonal index: **3**

Bud bank

Number of buds per shoot at the soil surface (root buds excluded):
 Number of buds per shoot at a depth of 0–10 cm (root buds excluded):
 Number of buds per shoot at a depth greater than 10 cm (root buds excluded):
 Size of the belowground bud bank (root buds excluded):
 Depth of the belowground bud bank (root buds excluded) [cm]:
 Number of buds per shoot at the soil surface (root buds included):
 Number of buds per shoot at a depth of 0–10 cm (root buds included):
 Number of buds per shoot at a depth greater than 10 cm (root buds included):
 Size of the belowground bud bank (root buds included):
 Depth of the belowground bud bank (root buds included) [cm]:

Trophic mode

Parasitism and mycoheterotrophy: **autotrophic**



Carnivory: **non-carnivorous**

Symbiotic nitrogen fixation: **no nitrogen-fixing symbionts**

Karyology

Chromosome number (2n): **34**

Ploidy level (x): **2**

2C genome size [Mbp]: **3190.14**

1Cx monoploid genome size [Mbp]: **1595.07**

Genomic GC content: **41.4 %**

Taxon origin

Origin in the Czech Republic: **native**

Ecological indicator values

Ellenberg-type indicator values

Light indicator value: **7 - half-light plant, mostly occurring at full light, but also in the shade up to about 30% of diffuse radiation incident in an open area**

Temperature indicator value: **2 - transition between values 1 and 3**

Moisture indicator value: **5 - indicator of fresh soils, focus on soils of average moisture, missing on wet and on soils that frequently dry out**

Reaction indicator value: **2 - transition between values 1 and 3**

Nutrient indicator value: **2 - transition between values 1 and 3**

Salinity indicator value: **0 - not salt tolerant, glycophyte**

Habitat and sociology

Occurrence in habitats

2 Alpine and subalpine grasslands

2B Subalpine tall-forb and tall-grass vegetation: **2 - optimum**

7 Acidophilous grasslands

7A Subalpine and montane acidophilous grasslands: **2 - optimum**

Affinity to the forest environment

Affinity to the forest environment in Thermophyticum: **0 - taxon that does not spontaneously occur in Czech forests**

Affinity to the forest environment in Mesophyticum and Oreophyticum: **0 - taxon that does not spontaneously occur in Czech forests**

Diagnostic taxon

Diagnostic taxon of alliances: [ADA Calamagrostion villosae](#)

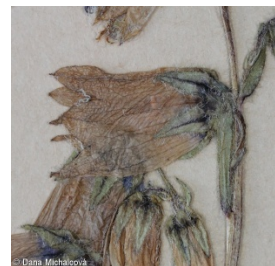
Diagnostic taxon of associations: [ADA03 Viola sudeticae-Deschampsietum cespitosae](#)

Distribution and frequency

Floristic zone: **boreal, northern temperate, southern temperate, submeridional**

Floristic region: **Europe**

Continental degree: **6**



Distribution range extension along the continentality gradient: **2**

Elevational belt in the Czech Republic: **submontane belt, montane belt**

Occurrence frequency in the basic grid mapping cells and quadrants of the basic grid mapping cells: **9**

taxon.data.freq_in_quad: **14**

Commonness in vegetation plots from the Czech Republic

Occurrence frequency in vegetation plots: **0 %**

Occurrence frequency in vegetation plots with a cover above 5%: **0 %**

Occurrence frequency in vegetation plots with a cover above 25%: **0 %**

Occurrence frequency in vegetation plots with a cover above 50%: **0 %**

Mean percentage cover in vegetation plots: **2 %**

Maximum percentage cover in vegetation plots: **2 %**

Number of habitats with taxon occurrence in the Czech Republic

Number of narrow habitats in which the taxon occurs: **2**

Number of narrow habitats in which the taxon has its optimum: **2**

Number of broad habitats in which the taxon occurs: **2**

Number of broad habitats in which the taxon has its optimum: **2**

Threats and protection

Red List 2017 (national categories): **C2b - endangered taxon, rare and declining**

Red List 2017 (IUCN categories): **VU - vulnerable**

Legal protection: **endangered taxon**

