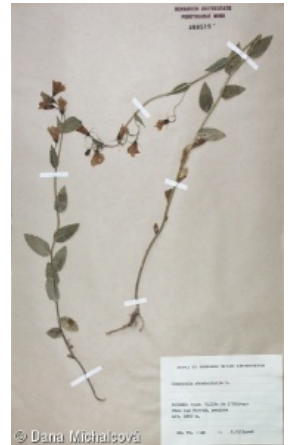
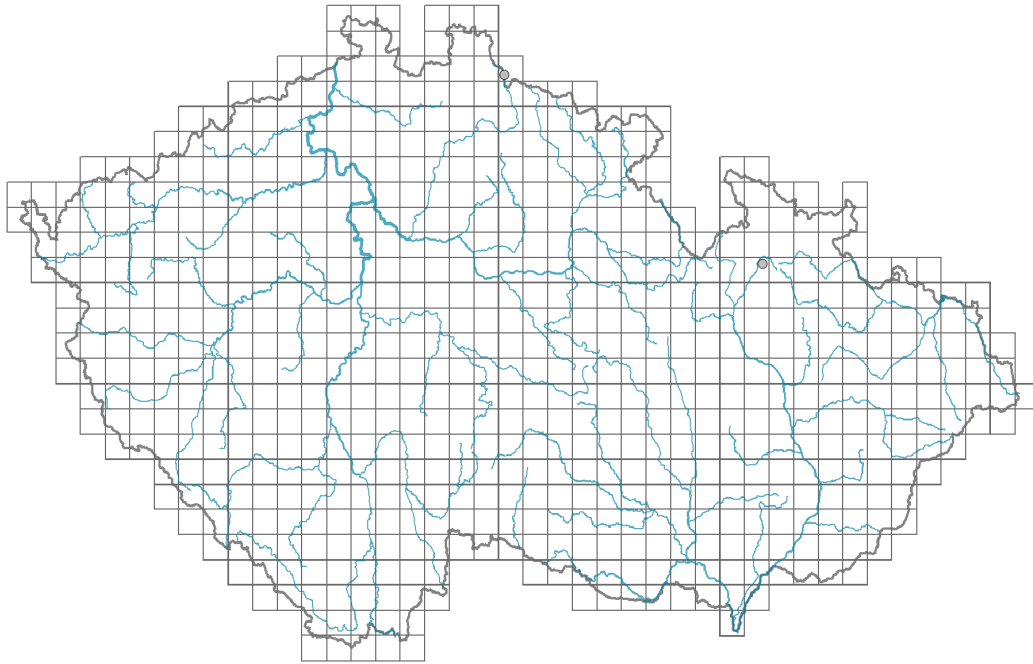


Campanula rhomboidalis

Distribution



Map info

● revised records

○ unrevised records

On the map are not visualized records without the coordinates and records marked as incorrect or doubtful.

Habitus and growth type

Height [m]: **0.2-0.3**

Growth form: **polycarpic perennial non-clonal herb**

Life form: **hemicryptophyte**

Life strategy: **C - competitor**



Leaf

Leaf presence and metamorphosis: **leaves present, not modified**

Leaf arrangement (phyllotaxis): **alternate**

Leaf shape: **simple - entire**

Stipules: **absent**

Petiole: **both present and absent**

Leaf anatomy: **mesomorphic**



Flower

Flowering period [month]: **June-August**

Flowering phase: **7 Ligustrum vulgare-Stachys sylvatica (end of early summer)**

Flower colour: **blue, blue-violet**

Flower symmetry: **actinomorphic**

Perianth type: **calyx and corolla**

Perianth fusion: **fused**

Shape of the sympetalous corolla or syntepalous perianth: **campanulate**
Calyx fusion: **synsepalous**
Inflorescence type: **racemus**
Dicliny: **synoecious**
Generative reproduction type: **facultative allogamy**
Pollination syndrome: **insect-pollination, selfing**

Fruit, seed and dispersal

Fruit type: **dry fruit - capsule**
Reproduction type: **only by seed/spores**
Dispersal unit (diaspore): **seed**
Dispersal strategy: **Allium (mainly autochory)**
Myrmecochory: **non-myrmecochorous (b)**

Belowground organs and clonality

Shoot metamorphosis: **pleiocorm**
Root metamorphosis: **primary storage root**
Storage organ: **pleiocorm, primary storage root**
Shoot life span (cyclicity): **monocyclic shoots prevailing**
Branching type of stem-derived organs of clonal growth: **sympodial**
Primary root: **present**

Bud bank

Number of buds per shoot at the soil surface (root buds excluded):
Number of buds per shoot at a depth of 0–10 cm (root buds excluded):
Number of buds per shoot at a depth greater than 10 cm (root buds excluded):
Size of the belowground bud bank (root buds excluded):
Depth of the belowground bud bank (root buds excluded) [cm]:
Number of buds per shoot at the soil surface (root buds included):
Number of buds per shoot at a depth of 0–10 cm (root buds included):
Number of buds per shoot at a depth greater than 10 cm (root buds included):
Size of the belowground bud bank (root buds included):
Depth of the belowground bud bank (root buds included) [cm]:

Trophic mode

Parasitism and mycoheterotrophy: **autotrophic**
Carnivory: **non-carnivorous**
Symbiotic nitrogen fixation: **no nitrogen-fixing symbionts**

Taxon origin

Origin in the Czech Republic: **neophyte**
Invasion status: **casual**
Geographic origin: **Mediterranean**
Year of the first record in the wild: **1880**
Period of introduction: **Late Modern Period (1800–1950)**
Introduction pathway: **intentional - ornamental, intentional - nature, unintentional**



- nature

Habitat and sociology

Affinity to the forest environment

Affinity to the forest environment in Thermophyticum: **0 - taxon that does not spontaneously occur in Czech forests**

Affinity to the forest environment in Mesophyticum and Oreophyticum: **0 - taxon that does not spontaneously occur in Czech forests**

Distribution and frequency

Floristic zone: **southern temperate, submeridional**

Floristic region: **Europe**

Occurrence frequency in the basic grid mapping cells and quadrants of the basic grid mapping cells: 2

taxon.data.freq_in_quad: 2

Threats and protection

Red List 2017 (national categories): **taxon is not on the Red List**

Red List 2017 (IUCN categories): **LC(NA) - least concern (taxon is not on the Red List)**

Legal protection: **not protected by law**