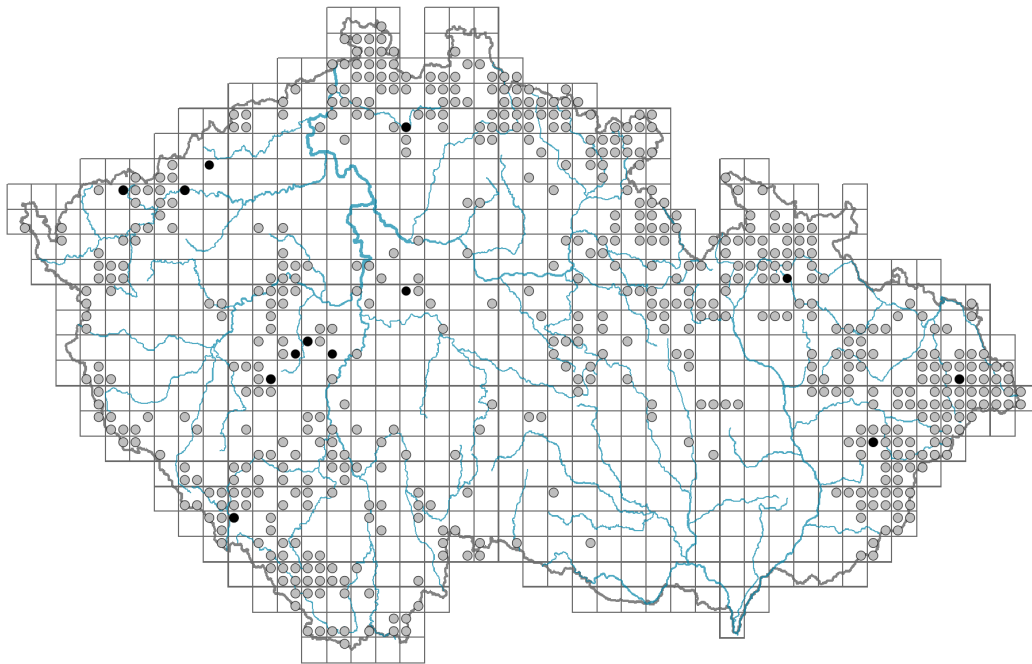


# *Cardamine flexuosa*

## Distribution



### Map info

● revised records

○ unrevised records

On the map are not visualized records without the coordinates and records marked as incorrect or doubtful.

## Habitus and growth type

Height [m]: **0.1-0.35**

Growth form: **polycarpic perennial non-clonal herb**

Life form: **therophyte (hemicryptophyte)**

Life strategy: **CSR - competitor/stress-tolerator/ruderal**

Life strategy (Pierce method based on leaf traits): **R/CR**

Life strategy (Pierce method, C-score): **24.7 %**

Life strategy (Pierce method, S-score): **0 %**

Life strategy (Pierce method, R-score): **75.3 %**



## Leaf

Leaf presence and metamorphosis: **leaves present, not modified**

Leaf arrangement (phyllotaxis): **alternate**

Leaf shape: **compound - imparipinnate**

Stipules: **absent**

Petiole: **mainly present**

Leaf life span: **overwintering green**

Leaf anatomy: **hygromorphic, helomorphic**

## Flower

Flowering period [month]: **April-September**

Flowering phase: **4 Fagus sylvatica-Galeobdolon (start of mid-spring)**

Flower colour: **white**

Flower symmetry: **actinomorphic**

Perianth type: **calyx and corolla**

Perianth fusion: **free**

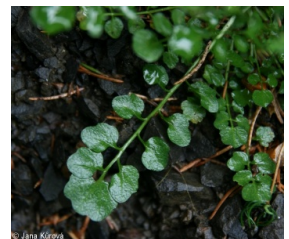
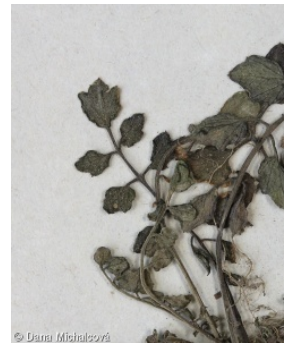
Calyx fusion: **aposepalous**

Inflorescence type: **racemus**

Dicliny: **synoecious**

Generative reproduction type: **facultative autogamy**

Pollination syndrome: **selfing**



## Fruit, seed and dispersal

Fruit type: **dry fruit - siliqua**

Fruit colour: **brown**

Reproduction type: **only by seed/spores**

Dispersal unit (diaspore): **seed**

Dispersal strategy: **Allium (mainly autochory)**

Myrmecochory: **non-myrmecochorous (b)**

## Belowground organs and clonality

Shoot life span (cyclicity): **dicyclic or polycyclic shoots prevailing**

Branching type of stem-derived organs of clonal growth: **sympodial**

Primary root: **present**

Bud bank

Number of buds per shoot at the soil surface (root buds excluded):

Number of buds per shoot at a depth of 0–10 cm (root buds excluded): **3**

Number of buds per shoot at a depth greater than 10 cm (root buds excluded):

Size of the belowground bud bank (root buds excluded): **8**

Depth of the belowground bud bank (root buds excluded) [cm]: **2**

Number of buds per shoot at the soil surface (root buds included):

Number of buds per shoot at a depth of 0–10 cm (root buds included): **3**

Number of buds per shoot at a depth greater than 10 cm (root buds included):

Size of the belowground bud bank (root buds included): **8**

Depth of the belowground bud bank (root buds included) [cm]: **2**

## Trophic mode

Parasitism and mycoheterotrophy: **autotrophic**

Carnivory: **non-carnivorous**

Symbiotic nitrogen fixation: **no nitrogen-fixing symbionts**

## Karyology

Chromosome number (2n): **32**

Ploidy level (x): **4**

2C genome size [Mbp]: **980.2**

1Cx monoploid genome size [Mbp]: **245.05**

Genomic GC content: **39.2 %**

## Taxon origin

Origin in the Czech Republic: **native**

## Ecological indicator values

Ellenberg-type indicator values

Light indicator value: **5 - semi-shade plant, only exceptionally occurring in full light, but usually at more than 10% of the diffuse radiation incident in an open area**

Temperature indicator value: **5 - moderate heat indicator, occurring from lowland to montane belt, mainly in submontane-temperate areas**

Moisture indicator value: **7 - humidity indicator, focus on well moistened, but not wet soils**

Reaction indicator value: **5 - indicator of moderate acidity, occurring rarely in strongly acidic as well as in neutral to alkaline conditions**

Nutrient indicator value: **6 - transition between values 5 and 7**

Salinity indicator value: **0 - not salt tolerant, glycophyte**

Indicator values for disturbance

Whole-community disturbance frequency indicator value: **-1.69**

Herb layer disturbance frequency indicator value: **-0.62**

Whole-community disturbance severity indicator value: **0.32**

Herb layer disturbance severity indicator value: **0.25**

Whole-community structure based disturbance indicator value: **0.25**

Herb layer structure-based disturbance indicator value: **0.23**

## Habitat and sociology

Occurrence in habitats

4 Wetland and riverine herbaceous vegetation

4D Riverine reed vegetation: **1 - rare occurrence**

4E Reed vegetation of brooks: **1 - rare occurrence**

4K Petasites fringes of montane brooks: **1 - rare occurrence**

5 Vegetation of springs and mires

5B Lowland to montane soft-water springs: **2 - optimum**

6 Meadows and mesic pastures

6G Vegetation of wet disturbed soils: **2 - optimum**

11 Heathlands and scrub

11J Willow galleries of loamy and sandy river banks: **1 - rare occurrence**

11R Scrub and pioneer woodland of forests clearings: **1 - rare occurrence**

12 Forests

12B Alluvial forests: **1 - rare occurrence**

12C Oak-hornbeam forests: **1 - rare occurrence**

12D Ravine forests: **2 - optimum**

12E Herb-rich beech forests: **1 - rare occurrence**

12G Acidophilous beech forests: **1 - rare occurrence**

12V Spruce plantations: **1 - rare occurrence**

### 13 Anthropogenic vegetation

13E Perennial nitrophilous herbaceous vegetation of mesic sites: **1 - rare occurrence**

13F Herbaceous vegetation of forests clearings and Rubus scrub: **1 - rare occurrence**

### Affinity to the forest environment

Affinity to the forest environment in Thermophyticum: **1.2 - taxon occurring mainly along forest edges and in forest openings, including forest roads and paths, windthrow sites, burnt sites and forest clearings**

Affinity to the forest environment in Mesophyticum and Oreophyticum: **1.2 - taxon occurring mainly along forest edges and in forest openings, including forest roads and paths, windthrow sites, burnt sites and forest clearings**

### Diagnostic taxon

Diagnostic taxon of alliances: [KAB \*Salicion elaeagno-daphnoidis\*](#)

Diagnostic taxon of associations: [KAB01 \*Salicetum elaeagno-purpureae\*](#), [RAA01 \*Caricetum remotae\*](#)

### Ecological specialization indices

Ecological specialization index for all vegetation types: **4.8**

Ecological specialization index for non-forest vegetation: **4.7**

Ecological specialization index for forest vegetation: **6**

### Colonization ability

Index of colonization success (ICS): **2**

Index of colonization potential (ICP): **4**

Optimum successional age [years]: **1**

## Distribution and frequency

Floristic zone: **northern temperate, southern temperate, submeridional, meridional**

Floristic region: **Europe, Eastern Asia**

Continentality degree: **4**

Distribution range extension along the continentality gradient: **4**

Elevational belt in the Czech Republic: **submontane belt, montane belt (colline belt)**

Occurrence frequency in the basic grid mapping cells and quadrants of the basic grid mapping cells: **315**

taxon.data.freq\_in\_quad: **589**

### Commonness in vegetation plots from the Czech Republic

Occurrence frequency in vegetation plots: **0.2 %**

Occurrence frequency in vegetation plots with a cover above 5%: **4.1 %**

Occurrence frequency in vegetation plots with a cover above 25%: **0 %**

Occurrence frequency in vegetation plots with a cover above 50%: **0 %**

Mean percentage cover in vegetation plots: **2.3 %**

Maximum percentage cover in vegetation plots: **20 %**

### Number of habitats with taxon occurrence in the Czech Republic

Number of narrow habitats in which the taxon occurs: **15**

Number of narrow habitats in which the taxon has its optimum: **3**

Number of broad habitats in which the taxon occurs: **6**

Number of broad habitats in which the taxon has its optimum: **3**

## **Threats and protection**

Red List 2017 (national categories): **taxon is not on the Red List**

Red List 2017 (IUCN categories): **LC(NA) - least concern (taxon is not on the Red List)**

Legal protection: **not protected by law**