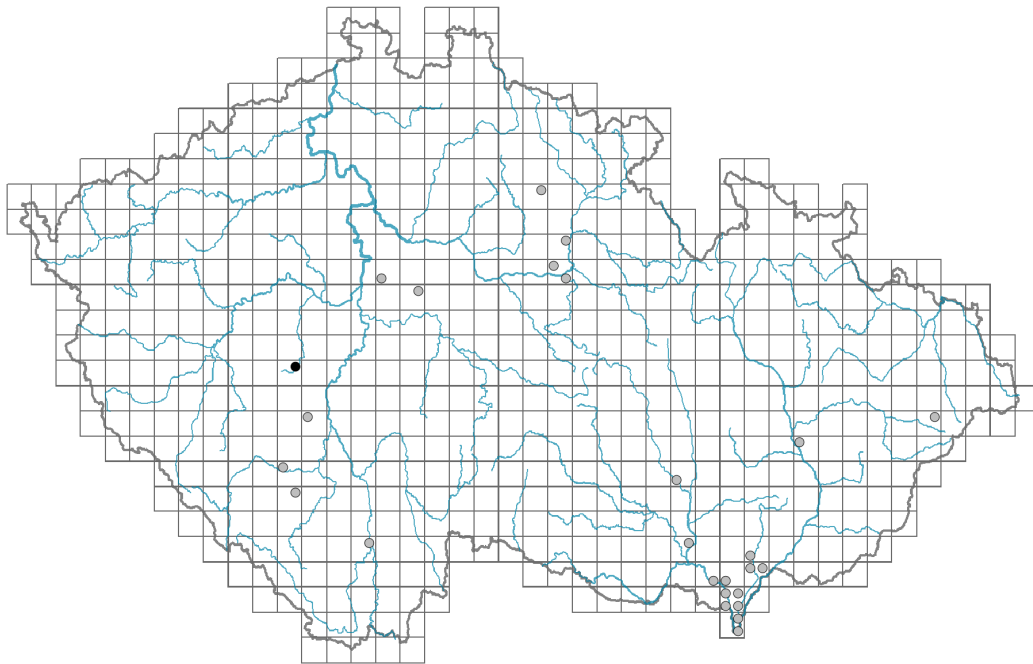


Cardamine parviflora

Distribution



Map info

● revised records

○ unrevised records

On the map are not visualized records without the coordinates and records marked as incorrect or doubtful.

Habitus and growth type

Height [m]: **0.08-0.3**

Growth form: **annual herb**

Life form: **therophyte**

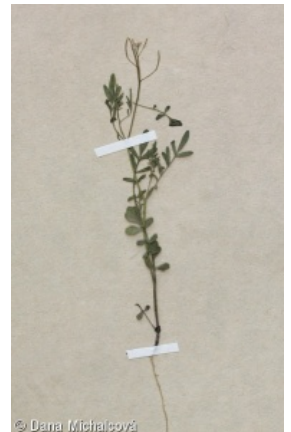
Life strategy: **CSR - competitor/stress-tolerator/ruderal**

Life strategy (Pierce method based on leaf traits): **R**

Life strategy (Pierce method, C-score): **6.2 %**

Life strategy (Pierce method, S-score): **0 %**

Life strategy (Pierce method, R-score): **93.8 %**



Leaf

Leaf presence and metamorphosis: **leaves present, not modified**

Leaf arrangement (phyllotaxis): **alternate**

Leaf shape: **compound - imparipinnate**

Stipules: **absent**

Petiole: **present**

Leaf life span: **summer green**

Flower

Flowering period [month]: **May-June**

Flower colour: **white**

Flower symmetry: **actinomorphic**
 Perianth type: **calyx and corolla**
 Perianth fusion: **free**
 Calyx fusion: **aposepalous**
 Inflorescence type: **racemus**
 Dicliny: **synoecious**
 Generative reproduction type: **mixed mating**
 Pollination syndrome: **insect-pollination, selfing**

Fruit, seed and dispersal

Fruit type: **dry fruit - siliqua**
 Fruit colour: **brown**
 Reproduction type: **only by seed/spores**
 Dispersal unit (diaspore): **seed**
 Dispersal strategy: **Allium (mainly autochory)**
 Myrmecochory: **non-myrmecochorous (b)**

Belowground organs and clonality

Shoot life span (cyclicity): **monocyclic shoots prevailing**
 Primary root: **present**

Bud bank

Number of buds per shoot at the soil surface (root buds excluded):
 Number of buds per shoot at a depth of 0–10 cm (root buds excluded):
 Number of buds per shoot at a depth greater than 10 cm (root buds excluded):
 Size of the belowground bud bank (root buds excluded):
 Depth of the belowground bud bank (root buds excluded) [cm]:
 Number of buds per shoot at the soil surface (root buds included):
 Number of buds per shoot at a depth of 0–10 cm (root buds included):
 Number of buds per shoot at a depth greater than 10 cm (root buds included):
 Size of the belowground bud bank (root buds included):
 Depth of the belowground bud bank (root buds included) [cm]:

Trophic mode

Parasitism and mycoheterotrophy: **autotrophic**
 Carnivory: **non-carnivorous**
 Symbiotic nitrogen fixation: **no nitrogen-fixing symbionts**

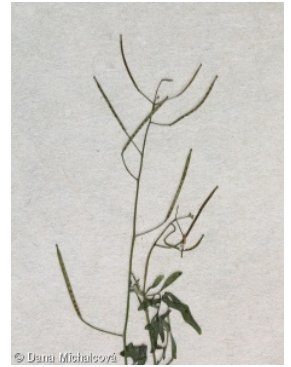
Taxon origin

Origin in the Czech Republic: **native**

Ecological indicator values

Ellenberg-type indicator values

Light indicator value: **7 - half-light plant, mostly occurring at full light, but also in the shade up to about 30% of diffuse radiation incident in an open area**



Temperature indicator value: **6 - transition between values 5 and 7**

Moisture indicator value: **7 - humidity indicator, focus on well moistened, but not wet soils**

Reaction indicator value: **7 - indicator of slightly acidic to slightly basic conditions, never occurring in very acidic conditions**

Nutrient indicator value: **6 - transition between values 5 and 7**

Salinity indicator value: **0 - not salt tolerant, glycophyte**

Habitat and sociology

Occurrence in habitats

4 Wetland and riverine herbaceous vegetation

4H Vegetation of low annual hygrophilous herbs: **1 - rare occurrence**

4I Vegetation of nitrophilous annual hygrophilous herbs: **1 - rare occurrence**

6 Meadows and mesic pastures

6G Vegetation of wet disturbed soils: **1 - rare occurrence**

12 Forests

12B Alluvial forests: **1 - rare occurrence**

13 Anthropogenic vegetation

13E Perennial nitrophilous herbaceous vegetation of mesic sites: **1 - rare occurrence**

Affinity to the forest environment

Affinity to the forest environment in Thermophyticum: **0 - taxon that does not spontaneously occur in Czech forests**

Affinity to the forest environment in Mesophyticum and Oreophyticum: **0 - taxon that does not spontaneously occur in Czech forests**

Ecological specialization indices

Ecological specialization index for all vegetation types: **5.1**

Ecological specialization index for non-forest vegetation: **5.4**

Colonization ability

Index of colonization success (ICS): **1**

Distribution and frequency

Floristic zone: **northern temperate, southern temperate, submeridional, meridional**

Floristic region: **circumpolar**

Continentality degree: **6**

Distribution range extension along the continentality gradient: **5**

Elevational belt in the Czech Republic: **lowlands**

Occurrence frequency in the basic grid mapping cells and quadrants of the basic grid mapping cells: **20**

taxon.data.freq_in_quad: **26**

Commonness in vegetation plots from the Czech Republic

Occurrence frequency in vegetation plots: **0 %**

Occurrence frequency in vegetation plots with a cover above 5%: **0 %**

Occurrence frequency in vegetation plots with a cover above 25%: **0 %**

Occurrence frequency in vegetation plots with a cover above 50%: **0 %**

Mean percentage cover in vegetation plots: **1.8 %**

Maximum percentage cover in vegetation plots: **2 %**

Number of habitats with taxon occurrence in the Czech Republic

Number of narrow habitats in which the taxon occurs: **5**

Number of narrow habitats in which the taxon has its optimum: **0**

Number of broad habitats in which the taxon occurs: **4**

Number of broad habitats in which the taxon has its optimum: **0**

Threats and protection

Red List 2017 (national categories): **C1b - critically threatened taxon, rare and declining**

Red List 2017 (IUCN categories): **EN - endangered**

Legal protection: **critically threatened taxon**