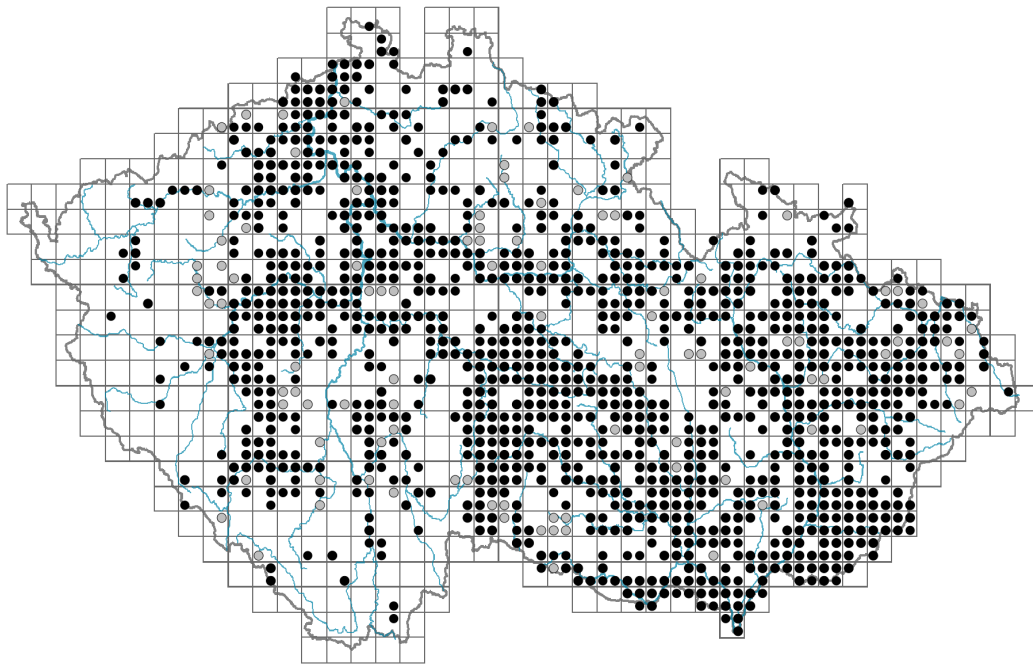


Carduus crispus

Distribution



Map info

● revised records

● unrevised records

On the map are not visualized records without the coordinates and records marked as incorrect or doubtful.

Habitus and growth type

Height [m]: **0.6**

Growth form: **monocarpic perennial non-clonal herb**

Life form: **hemicryptophyte**

Life strategy: **CR - competitor/ruderal**

Life strategy (Pierce method based on leaf traits): **C/CR**

Life strategy (Pierce method, C-score): **63 %**

Life strategy (Pierce method, S-score): **0 %**

Life strategy (Pierce method, R-score): **37.1 %**



Leaf

Leaf presence and metamorphosis: **leaves present, not modified**

Leaf arrangement (phyllotaxis): **alternate**

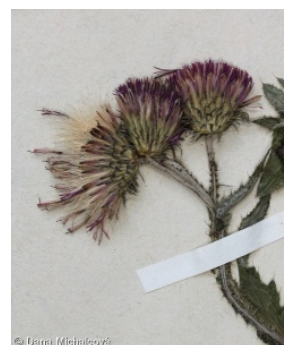
Leaf shape: **simple - pinnately divided**

Stipules: **absent**

Petiole: **mainly absent**

Leaf life span: **summer green**

Leaf anatomy: **mesomorphic**



Flower

Flowering period [month]: **June-August**

Flowering phase: **8 Clematis vitalba-Galium sylvaticum (mid-summer)**

Flower colour: **red-violet**

Flower symmetry: **actinomorphic**

Perianth type: **calyx reduced, corolla present**

Perianth fusion: **fused**

Shape of the sympetalous corolla or syntepalous perianth: **tubular**

Calyx fusion: **pappus**

Inflorescence type: **corymbothsus ex anthodiis compositus**

Dicliny: **synoecious**

Generative reproduction type: **mixed mating**

Pollination syndrome: **insect-pollination, selfing**

Pollinator spectrum: **bumblebees, solitary bees (hoverflies, nitidulids)**



Fruit, seed and dispersal

Fruit type: **dry fruit - achene/cypsela/samara**

Fruit colour: **brown**

Reproduction type: **only by seed/spores**

Dispersal unit (diaspore): **fruit, infrutescence or its part**

Dispersal strategy: **Epilobium (mainly anemochory and autochory)**

Myrmecochory: **myrmecochorous**

Belowground organs and clonality

Root metamorphosis: **primary storage root**

Storage organ: **primary storage root**

Shoot life span (cyclicity): **dicyclic or polycyclic shoots prevailing**

Primary root: **present**

Bud bank

Number of buds per shoot at the soil surface (root buds excluded):

Number of buds per shoot at a depth of 0-10 cm (root buds excluded):

Number of buds per shoot at a depth greater than 10 cm (root buds excluded):

Size of the belowground bud bank (root buds excluded):

Depth of the belowground bud bank (root buds excluded) [cm]:

Number of buds per shoot at the soil surface (root buds included):

Number of buds per shoot at a depth of 0-10 cm (root buds included):

Number of buds per shoot at a depth greater than 10 cm (root buds included):

Size of the belowground bud bank (root buds included):

Depth of the belowground bud bank (root buds included) [cm]:



Trophic mode

Parasitism and mycoheterotrophy: **autotrophic**

Carnivory: **non-carnivorous**

Symbiotic nitrogen fixation: **no nitrogen-fixing symbionts**

Karyology

Chromosome number (2n): **16**

Ploidy level (x): **2**
 2C genome size [Mbp]: **1476.58**
 1Cx monoploid genome size [Mbp]: **738.29**
 Genomic GC content: **38.5 %**

Taxon origin

Origin in the Czech Republic: **native**

Ecological indicator values

Ellenberg-type indicator values

Light indicator value: **6 - transition between values 5 and 7; rarely at less than 20% of diffuse radiation incident in an open area**

Temperature indicator value: **5 - moderate heat indicator, occurring from lowland to montane belt, mainly in submontane-temperate areas**

Moisture indicator value: **6 - transition between values 5 and 7**

Reaction indicator value: **6 - transition between values 5 and 7**

Nutrient indicator value: **9 - concentrated at very nutrient-rich sites**

Salinity indicator value: **1 - salt tolerant, mostly on low-salt to salt-free soils, but occasionally on slightly salty soils**

Indicator values for disturbance

Whole-community disturbance frequency indicator value: **-0.96**

Herb layer disturbance frequency indicator value: **-0.63**

Whole-community disturbance severity indicator value: **0.53**

Herb layer disturbance severity indicator value: **0.52**

Whole-community structure based disturbance indicator value: **0.37**

Herb layer structure-based disturbance indicator value: **0.41**

Habitat and sociology

Occurrence in habitats

4 Wetland and riverine herbaceous vegetation

4D Riverine reed vegetation: **2 - optimum**

4I Vegetation of nitrophilous annual hygrophilous herbs: **1 - rare occurrence**

4J River gravel banks: **1 - rare occurrence**

4K Petasites fringes of montane brooks: **1 - rare occurrence**

4L Nitrophilous herbaceous fringes of lowland rivers: **3 - dominant**

6 Meadows and mesic pastures

6D Alluvial meadows of lowland rivers: **1 - rare occurrence**

11 Heathlands and scrub

11J Willow galleries of loamy and sandy river banks: **1 - rare occurrence**

11L Tall mesic and xeric shrub: **1 - rare occurrence**

11N Low xeric scrub: **1 - rare occurrence**

11R Scrub and pioneer woodland of forests clearings: **1 - rare occurrence**

12 Forests

12B Alluvial forests: **1 - rare occurrence**

12T Robinia pseudacacia plantations: **1 - rare occurrence**



12U Plantations of broad-leaved non-native trees: **1 - rare occurrence**

13 Anthropogenic vegetation

13A Annual vegetation of ruderal habitats: **1 - rare occurrence**

13B Annual vegetation of arable land: **1 - rare occurrence**

13D Perennial thermophilous ruderal vegetation: **2 - optimum**

13E Perennial nitrophilous herbaceous vegetation of mesic sites: **2 - optimum**

13F Herbaceous vegetation of forests clearings and Rubus scrub: **1 - rare occurrence**

Affinity to the forest environment

Affinity to the forest environment in Thermophyticum: **2.2 - taxon occurring partly in the forest, but mainly in open vegetation**

Affinity to the forest environment in Mesophyticum and Oreophyticum: **2.2 - taxon occurring partly in the forest, but mainly in open vegetation**

Diagnostic taxon

Diagnostic taxon of classes: [KA *Salicetea purpureae*](#)

Diagnostic taxon of alliances: [XDA *Senecionion fluviatilis*](#)

Diagnostic taxon of associations: [KBD03 *Sambuco nigrae-Aceretum negundo*](#), [XDE05 *Chaerophylletum bulbosi*](#)

Ecological specialization indices

Ecological specialization index for all vegetation types: **4**

Ecological specialization index for non-forest vegetation: **4.2**

Ecological specialization index for forest vegetation: **4.7**

Colonization ability

Index of colonization success (ICS): **5**

Index of colonization potential (ICP): **7**

Optimum successional age [years]: **13**

Distribution and frequency

Floristic zone: **northern temperate, southern temperate, submeridional, meridional**

Floristic region: **Europe, Asia**

Distribution range extension along the continentality gradient: **7**

Elevational belt in the Czech Republic: **lowlands, colline belt**

Occurrence frequency in the basic grid mapping cells and quadrants of the basic grid mapping cells: **487**

taxon.data.freq_in_quad: **1215**

Commonness in vegetation plots from the Czech Republic

Occurrence frequency in vegetation plots: **1 %**

Occurrence frequency in vegetation plots with a cover above 5%: **5.9 %**

Occurrence frequency in vegetation plots with a cover above 25%: **0.7 %**

Occurrence frequency in vegetation plots with a cover above 50%: **0.3 %**

Mean percentage cover in vegetation plots: **3 %**

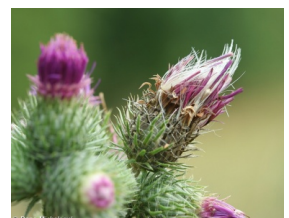
Maximum percentage cover in vegetation plots: **88 %**

Number of habitats with taxon occurrence in the Czech Republic

Number of narrow habitats in which the taxon occurs: **18**

Number of narrow habitats in which the taxon has its optimum: **4**

Number of broad habitats in which the taxon occurs: **5**



Number of broad habitats in which the taxon has its optimum: **2**

Threats and protection

Red List 2017 (national categories): **taxon is not on the Red List**

Red List 2017 (IUCN categories): **LC(NA) - least concern (taxon is not on the Red List)**

Legal protection: **not protected by law**