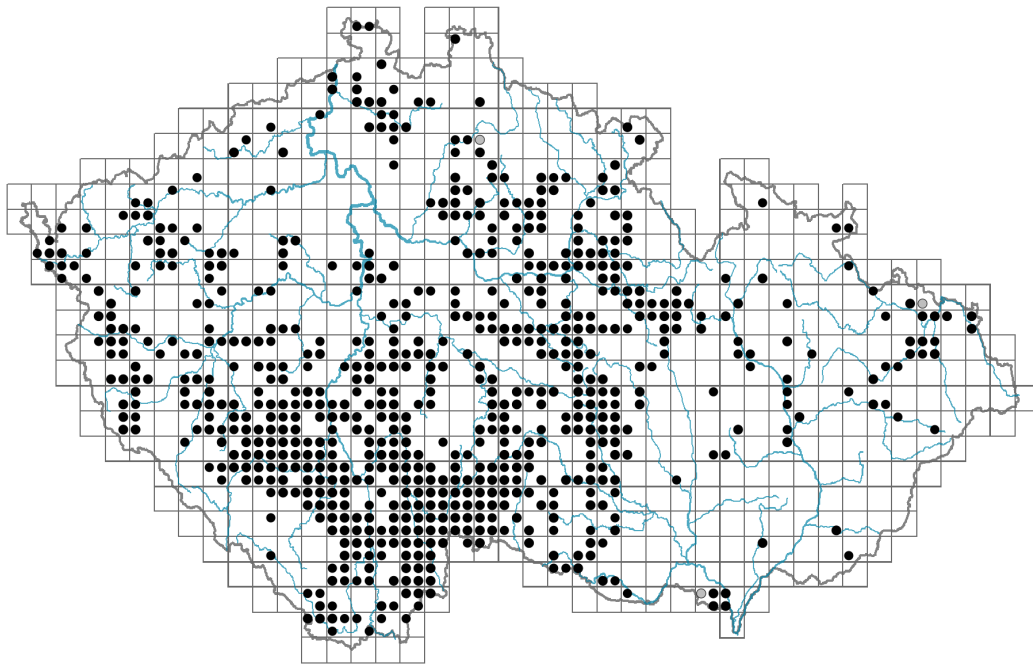


Carex bohemica

Distribution



Map info

● revised records

○ unrevised records

On the map are not visualized records without the coordinates and records marked as incorrect or doubtful.



Habitus and growth type

Height [m]: **0.05-0.3**

Growth form: **annual herb**

Life form: **hemicryptophyte (therophyte)**

Life strategy: **CSR - competitor/stress-tolerator/ruderal**

Leaf

Leaf presence and metamorphosis: **leaves present, not modified**

Leaf arrangement (phyllotaxis): **alternate**

Leaf shape: **simple - entire**

Stipules: **absent**

Petiole: **absent**

Leaf life span: **summer green**

Leaf anatomy: **helomorphic**



Flower

Flowering period [month]: **June-September**

Flower colour: **green**

Perianth type: **flower achlamydeous**

Inflorescence type: **spica e spiculis composita**

Dicliny: **monoecious**



Generative reproduction type: **facultative allogamy**

Pollination syndrome: **wind-pollination**

Fruit, seed and dispersal

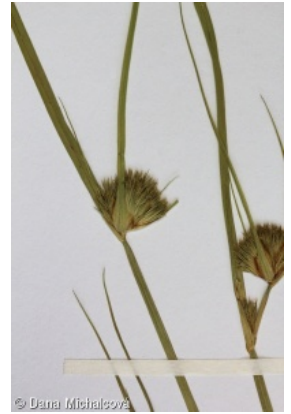
Fruit type: **dry fruit - nut enclosed in an utricle**

Fruit colour: **brown**

Reproduction type: **by seed/spores and vegetatively**

Dispersal unit (diaspore): **fruit, infrutescence or its part**

Dispersal strategy: **Sparganium (mainly autochory and hydrochory)**



Belowground organs and clonality

Shoot metamorphosis: **rhizome**

Storage organ: **rhizome, tuft**

Type of clonal growth organ: **hypogeogenous rhizome**

Freely dispersible organs of clonal growth: **absent**

Shoot life span (cyclicity): **dicyclic or polycyclic shoots prevailing**

Branching type of stem-derived organs of clonal growth: **sympodial**

Primary root: **absent**

Persistence of the clonal growth organ [year]: **2.5**

Number of clonal offspring: **6**

Lateral spreading distance by clonal growth [m]: **0.01**

Clonal index: **4**

Bud bank

Number of buds per shoot at the soil surface (root buds excluded): **5**

Number of buds per shoot at a depth of 0–10 cm (root buds excluded): **8**

Number of buds per shoot at a depth greater than 10 cm (root buds excluded): **0**

Size of the belowground bud bank (root buds excluded): **13**

Depth of the belowground bud bank (root buds excluded) [cm]: **3**

Number of buds per shoot at the soil surface (root buds included): **5**

Number of buds per shoot at a depth of 0–10 cm (root buds included): **8**

Number of buds per shoot at a depth greater than 10 cm (root buds included): **0**

Size of the belowground bud bank (root buds included): **13**

Depth of the belowground bud bank (root buds included) [cm]: **3**



Trophic mode

Parasitism and mycoheterotrophy: **autotrophic**

Carnivory: **non-carnivorous**

Symbiotic nitrogen fixation: **no nitrogen-fixing symbionts**

Karyology

Chromosome number (2n): **80**

Ploidy level (x): **2**

2C genome size [Mbp]: **561.3**

1Cx monoploid genome size [Mbp]: **280.65**

Genomic GC content: **36.2 %**

Taxon origin

Origin in the Czech Republic: **native**

Ecological indicator values

Ellenberg-type indicator values

Light indicator value: **8 - light plant, only exceptionally occurring at less than 40% of diffuse radiation incident in an open area**

Temperature indicator value: **5 - moderate heat indicator, occurring from lowland to montane belt, mainly in submontane-temperate areas**

Moisture indicator value: **8 - transition between values 7 and 9**

Reaction indicator value: **6 - transition between values 5 and 7**

Nutrient indicator value: **6 - transition between values 5 and 7**

Salinity indicator value: **1 - salt tolerant, mostly on low-salt to salt-free soils, but occasionally on slightly salty soils**

Indicator values for disturbance

Whole-community disturbance frequency indicator value: **-0.39**

Herb layer disturbance frequency indicator value: **-0.34**

Whole-community disturbance severity indicator value: **0.49**

Herb layer disturbance severity indicator value: **0.5**

Whole-community structure based disturbance indicator value: **0.67**

Herb layer structure-based disturbance indicator value: **0.7**

Habitat and sociology

Occurrence in habitats

3 Aquatic vegetation

3C Macrophytic vegetation of oligotrophic lakes and pools: **2 - optimum**

4 Wetland and riverine herbaceous vegetation

4A Reed-beds of eutrophic still waters: **1 - rare occurrence**

4B Halophilous reed and sedge beds: **1 - rare occurrence**

4C Eutrophic vegetation of muddy substrata: **1 - rare occurrence**

4F Mesotrophic vegetation of muddy substrata: **1 - rare occurrence**

4G Tall-sedge beds: **1 - rare occurrence**

4H Vegetation of low annual hygrophilous herbs: **3 - dominant**

4I Vegetation of nitrophilous annual hygrophilous herbs: **2 - optimum**

10 Saline vegetation

10I Inland saline meadows: **1 - rare occurrence**

Affinity to the forest environment

Affinity to the forest environment in Thermophyticum: **0 - taxon that does not spontaneously occur in Czech forests**

Affinity to the forest environment in Mesophyticum and Oreophyticum: **0 - taxon that does not spontaneously occur in Czech forests**

Diagnostic taxon

Diagnostic taxon of classes: [MA Isoëto-Nano-Juncetea](#), [MB Bidentetea tripartitae](#)

Diagnostic taxon of alliances: [MAA Eleocharition ovatae](#), [MAB Radiolion linoidis](#), [MBA Bidention tripartitae](#)

Diagnostic taxon of associations: [MAA01 *Polygono-Eleocharitetum ovatae*](#), [MAA03 *Stellario uliginosae-Isolepidetum setaceae*](#), [MBA01 *Rumici maritimi-Ranunculetum scelerati*](#), [MBA04 *Polygono brittingeri-Chenopodietum rubri*](#), [MBA05 *Corrigiolo littoralis-Bidentetum radiatae*](#), [MCC11 *Bolboschoenetum yagarae*](#), [VDB04 *Pilularietum globuliferae*](#)

Constant taxon

Constant taxon of classes: [MA *Isoëto-Nano-Juncetea*](#)

Constant taxon of alliances: [MAA *Eleocharition ovatae*](#)

Constant taxon of associations: [MAA01 *Polygono-Eleocharitetum ovatae*](#), [MBA01 *Rumici maritimi-Ranunculetum scelerati*](#), [MBA05 *Corrigiolo littoralis-Bidentetum radiatae*](#), [VDB04 *Pilularietum globuliferae*](#)

Dominant taxon

Dominant taxon of associations: [MAA01 *Polygono-Eleocharitetum ovatae*](#), [MBA01 *Rumici maritimi-Ranunculetum scelerati*](#), [MBA02 *Bidentetum tripartitae*](#), [MBA05 *Corrigiolo littoralis-Bidentetum radiatae*](#), [MCC01 *Oenanthe aquatica*](#), [MCC09 *Batrachio circinati-Alismatetum graminei*](#)

Ecological specialization indices

Ecological specialization index for all vegetation types: **5.8**

Ecological specialization index for non-forest vegetation: **5.8**

Colonization ability

Index of colonization success (ICS): **2**

Index of colonization potential (ICP): **1**

Optimum successional age [years]: **2**

Distribution and frequency

Floristic zone: **boreal, northern temperate, southern temperate, submeridional, meridional**

Floristic region: **Europe, Asia**

Continental degree: **6**

Distribution range extension along the continentality gradient: **6**

Elevational belt in the Czech Republic: **lowlands, colline belt (submontane belt)**

Occurrence frequency in the basic grid mapping cells and quadrants of the basic grid mapping cells: 346

taxon.data.freq_in_quad: 705

Commonness in vegetation plots from the Czech Republic

Occurrence frequency in vegetation plots: **1.2 %**

Occurrence frequency in vegetation plots with a cover above 5%: **23.1 %**

Occurrence frequency in vegetation plots with a cover above 25%: **11 %**

Occurrence frequency in vegetation plots with a cover above 50%: **2.5 %**

Mean percentage cover in vegetation plots: **8.1 %**

Maximum percentage cover in vegetation plots: **88 %**

Number of habitats with taxon occurrence in the Czech Republic

Number of narrow habitats in which the taxon occurs: **9**

Number of narrow habitats in which the taxon has its optimum: **3**

Number of broad habitats in which the taxon occurs: **3**

Number of broad habitats in which the taxon has its optimum: **2**

Threats and protection

Red List 2017 (national categories): **C4a - near threatened taxon**

Red List 2017 (IUCN categories): **LC - least concern**

Legal protection: **not protected by law**