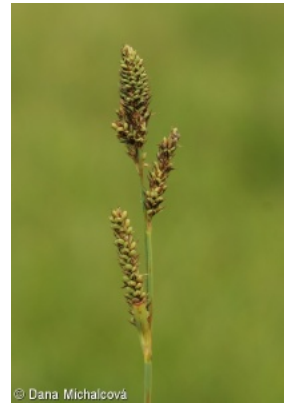
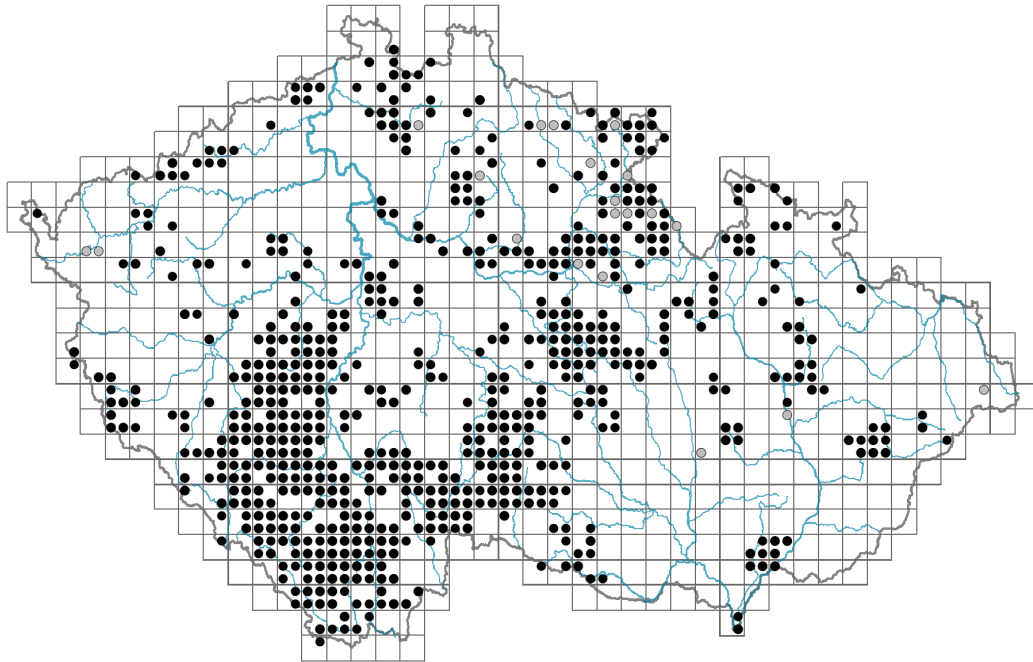


# Carex hartmanii

## Distribution



© Dana Michalcová

### Map info

● revised records

○ unrevised records

On the map are not visualized records without the coordinates and records marked as incorrect or doubtful.

## Habitus and growth type

Height [m]: **0.3-0.7**

Growth form: **clonal herb**

Life form: **hemicryptophyte (geophyte)**

Life strategy: **CS - competitor/stress-tolerator**

## Leaf

Leaf presence and metamorphosis: **leaves present, not modified**

Leaf arrangement (phyllotaxis): **alternate**

Leaf shape: **simple - entire**

Stipules: **absent**

Petiole: **absent**

Leaf life span: **summer green**

## Flower

Flowering period [month]: **May-June**

Flowering phase: **5 Sorbus aucuparia-Galium odoratum (end of mid-spring)**

Flower colour: **black**

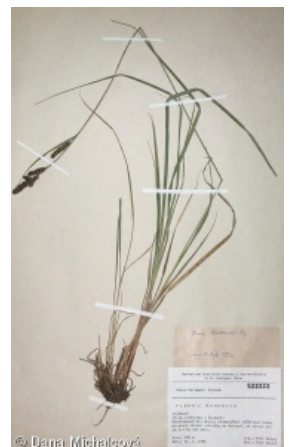
Perianth type: **flower achlamydeous**

Inflorescence type: **spica e spiculis composita**

Dicliny: **monoecious**



© Dana Michalcová



© Dana Michalcová

Generative reproduction type: **mixed mating**

Pollination syndrome: **wind-pollination**

## Fruit, seed and dispersal

Fruit type: **dry fruit - nut enclosed in an utricle**

Fruit colour: **brown, grey**

Reproduction type: **by seed/spores and vegetatively**

Dispersal unit (diaspore): **fruit, infrutescence or its part**

Dispersal strategy: **Allium (mainly autochory)**

Myrmecochory: **probably myrmecochorous**

## Belowground organs and clonality

Shoot metamorphosis: **stolon, rhizome**

Storage organ: **stolon, rhizome**

Type of clonal growth organ: **hypogeogenous rhizome**

Freely dispersible organs of clonal growth: **absent**

Shoot life span (cyclicity): **dicyclic or polycyclic shoots prevailing**

Branching type of stem-derived organs of clonal growth: **sympodial**

Primary root: **absent**

Persistence of the clonal growth organ [year]: **4**

Number of clonal offspring: **1**

Lateral spreading distance by clonal growth [m]: **0.09**

Clonal index: **4**

## Bud bank

Number of buds per shoot at the soil surface (root buds excluded): **5**

Number of buds per shoot at a depth of 0–10 cm (root buds excluded): **15**

Number of buds per shoot at a depth greater than 10 cm (root buds excluded): **0**

Size of the belowground bud bank (root buds excluded): **20**

Depth of the belowground bud bank (root buds excluded) [cm]: **4**

Number of buds per shoot at the soil surface (root buds included): **5**

Number of buds per shoot at a depth of 0–10 cm (root buds included): **15**

Number of buds per shoot at a depth greater than 10 cm (root buds included): **0**

Size of the belowground bud bank (root buds included): **20**

Depth of the belowground bud bank (root buds included) [cm]: **4**

## Trophic mode

Parasitism and mycoheterotrophy: **autotrophic**

Carnivory: **non-carnivorous**

Symbiotic nitrogen fixation: **no nitrogen-fixing symbionts**

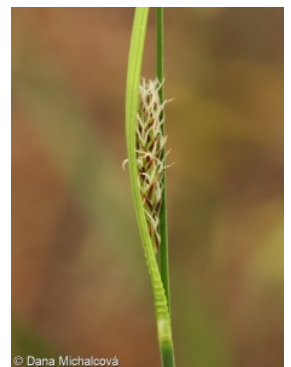
## Karyology

Chromosome number (2n): **50**

Ploidy level (x): **2**

2C genome size [Mbp]: **671.58**

1Cx monoploid genome size [Mbp]: **335.79**



Genomic GC content: **35.9 %**

## Taxon origin

Origin in the Czech Republic: **native**

## Ecological indicator values

Ellenberg-type indicator values

Light indicator value: **7 - half-light plant, mostly occurring at full light, but also in the shade up to about 30% of diffuse radiation incident in an open area**

Temperature indicator value: **5 - moderate heat indicator, occurring from lowland to montane belt, mainly in submontane-temperate areas**

Moisture indicator value: **8 - transition between values 7 and 9**

Reaction indicator value: **5x - indicator of moderate acidity, occurring rarely in strongly acidic as well as in neutral to alkaline conditions (generalist)**

Nutrient indicator value: **4 - transition between values 3 and 5**

Salinity indicator value: **0 - not salt tolerant, glycophyte**

Indicator values for disturbance

Whole-community disturbance frequency indicator value: **-0.4**

Herb layer disturbance frequency indicator value: **-0.18**

Whole-community disturbance severity indicator value: **0.28**

Herb layer disturbance severity indicator value: **0.3**

Whole-community structure based disturbance indicator value: **0.58**

Herb layer structure-based disturbance indicator value: **0.72**



## Habitat and sociology

Occurrence in habitats

4 Wetland and riverine herbaceous vegetation

4A Reed-beds of eutrophic still waters: **1 - rare occurrence**

4G Tall-sedge beds: **1 - rare occurrence**

5 Vegetation of springs and mires

5D Calcareous fens: **1 - rare occurrence**

5E Acidic moss-rich fens and peatland meadows: **2 - optimum**

5F Transitional mires: **1 - rare occurrence**

6 Meadows and mesic pastures

6D Alluvial meadows of lowland rivers: **1 - rare occurrence**

6E Wet Cirsium meadows: **2 - optimum**

6F Intermittently wet Molinia meadows: **2 - optimum**

10 Saline vegetation

10I Inland saline meadows: **1 - rare occurrence**

12 Forests

12A Alder carrs: **1 - rare occurrence**

Affinity to the forest environment

Affinity to the forest environment in Thermophyticum: **2.2 - taxon occurring partly in the forest, but mainly in open vegetation**

Affinity to the forest environment in Mesophyticum and Oreophyticum: **2.2 - taxon**

**occurring partly in the forest, but mainly in open vegetation**

**Ecological specialization indices**

Ecological specialization index for all vegetation types: **6.4**

Ecological specialization index for non-forest vegetation: **6.4**

**Colonization ability**

Index of colonization success (ICS): **1**

Index of colonization potential (ICP): **1**

**Distribution and frequency**

Floristic zone: **northern temperate, southern temperate, submeridional**

Floristic region: **Europe, Asia, Americas**

Continentality degree: **7**

Distribution range extension along the continentality gradient: **4**

Elevational belt in the Czech Republic: **lowlands, colline belt, submontane belt**

Occurrence frequency in the basic grid mapping cells and quadrants of the basic grid mapping cells: **319**

taxon.data.freq\_in\_quad: **680**

**Commonness in vegetation plots from the Czech Republic**

Occurrence frequency in vegetation plots: **0.3 %**

Occurrence frequency in vegetation plots with a cover above 5%: **20.2 %**

Occurrence frequency in vegetation plots with a cover above 25%: **6.1 %**

Occurrence frequency in vegetation plots with a cover above 50%: **0 %**

Mean percentage cover in vegetation plots: **6 %**

Maximum percentage cover in vegetation plots: **38 %**

**Number of habitats with taxon occurrence in the Czech Republic**

Number of narrow habitats in which the taxon occurs: **10**

Number of narrow habitats in which the taxon has its optimum: **3**

Number of broad habitats in which the taxon occurs: **5**

Number of broad habitats in which the taxon has its optimum: **2**

**Threats and protection**

Red List 2017 (national categories): **C4a - near threatened taxon**

Red List 2017 (IUCN categories): **NT - near threatened**

Legal protection: **not protected by law**