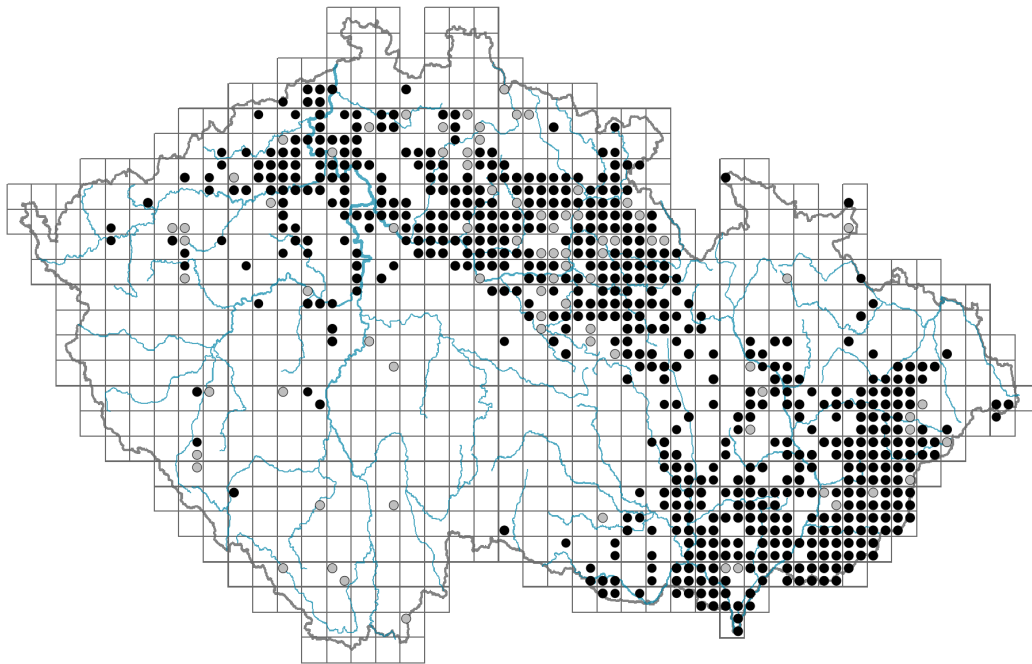


Carex tomentosa

Distribution



© Dana Michalčová

Map info

● revised records

● unrevised records

On the map are not visualized records without the coordinates and records marked as incorrect or doubtful.

Habitus and growth type

Height [m]: **0.2-0.5**

Growth form: **clonal herb**

Life form: **hemicryptophyte (geophyte)**

Life strategy: **CSR - competitor/stress-tolerator/ruderal**

Life strategy (Pierce method based on leaf traits): **S/CSR**

Life strategy (Pierce method, C-score): **14.5 %**

Life strategy (Pierce method, S-score): **61.8 %**

Life strategy (Pierce method, R-score): **23.7 %**

Leaf

Leaf presence and metamorphosis: **leaves present, not modified**

Leaf arrangement (phyllotaxis): **alternate**

Leaf shape: **simple - entire**

Stipules: **absent**

Petiole: **absent**

Leaf life span: **summer green**

Leaf anatomy: **mesomorphic**

Flower

Flowering period [month]: **May**



© Dana Michalčová



© Dana Michalčová

Flowering phase: **4 Fagus sylvatica-Galeobdolon (start of mid-spring)**

Flower colour: **green**

Perianth type: **flower achlamydeous**

Inflorescence type: **spica e spiculis composita**

Dicliny: **monoecious**

Generative reproduction type: **mixed mating**

Pollination syndrome: **wind-pollination**

Fruit, seed and dispersal

Fruit type: **dry fruit - nut enclosed in an utricle**

Fruit colour: **brown**

Reproduction type: **by seed/spores and vegetatively**

Dispersal unit (diaspore): **fruit, infrutescence or its part**

Dispersal strategy: **Allium (mainly autochory)**

Myrmecochory: **probably myrmecochorous**

Belowground organs and clonality

Shoot metamorphosis: **stolon, rhizome**

Storage organ: **stolon, rhizome**

Type of clonal growth organ: **hypogeogenous rhizome**

Freely dispersible organs of clonal growth: **absent**

Shoot life span (cyclicality): **dicyclic or polycyclic shoots prevailing**

Branching type of stem-derived organs of clonal growth: **sympodial**

Primary root: **absent**

Persistence of the clonal growth organ [year]: **4**

Number of clonal offspring: **1**

Lateral spreading distance by clonal growth [m]: **0.07**

Clonal index: **4**

Bud bank

Number of buds per shoot at the soil surface (root buds excluded): **5**

Number of buds per shoot at a depth of 0–10 cm (root buds excluded): **15**

Number of buds per shoot at a depth greater than 10 cm (root buds excluded): **0**

Size of the belowground bud bank (root buds excluded): **20**

Depth of the belowground bud bank (root buds excluded) [cm]: **4**

Number of buds per shoot at the soil surface (root buds included): **5**

Number of buds per shoot at a depth of 0–10 cm (root buds included): **15**

Number of buds per shoot at a depth greater than 10 cm (root buds included): **0**

Size of the belowground bud bank (root buds included): **20**

Depth of the belowground bud bank (root buds included) [cm]: **4**

Trophic mode

Parasitism and mycoheterotrophy: **autotrophic**

Carnivory: **non-carnivorous**

Symbiotic nitrogen fixation: **no nitrogen-fixing symbionts**



Karyology

Chromosome number (2n): **48**

Ploidy level (x): **2**

2C genome size [Mbp]: **771.23**

1Cx monoploid genome size [Mbp]: **385.62**

Genomic GC content: **35.9 %**

Taxon origin

Origin in the Czech Republic: **native**

Ecological indicator values

Ellenberg-type indicator values

Light indicator value: **7 - half-light plant, mostly occurring at full light, but also in the shade up to about 30% of diffuse radiation incident in an open area**

Temperature indicator value: **6 - transition between values 5 and 7**

Moisture indicator value: **6 - transition between values 5 and 7**

Reaction indicator value: **8 - transition between values 7 and 9, occurring mostly in calcium-rich conditions**

Nutrient indicator value: **4 - transition between values 3 and 5**

Salinity indicator value: **1 - salt tolerant, mostly on low-salt to salt-free soils, but occasionally on slightly salty soils**

Indicator values for disturbance

Whole-community disturbance frequency indicator value: **-0.47**

Herb layer disturbance frequency indicator value: **-0.14**

Whole-community disturbance severity indicator value: **0.22**

Herb layer disturbance severity indicator value: **0.26**

Whole-community structure based disturbance indicator value: **0.49**

Herb layer structure-based disturbance indicator value: **0.62**

Habitat and sociology

Occurrence in habitats

5 Vegetation of springs and mires

5A Hard-water springs with tufa formation: **1 - rare occurrence**

5D Calcareous fens: **2 - optimum**

5E Acidic moss-rich fens and peatland meadows: **1 - rare occurrence**

6 Meadows and mesic pastures

6A Mesic Arrhenatherum meadows: **1 - rare occurrence**

6C Pastures and park grasslands: **1 - rare occurrence**

6D Alluvial meadows of lowland rivers: **1 - rare occurrence**

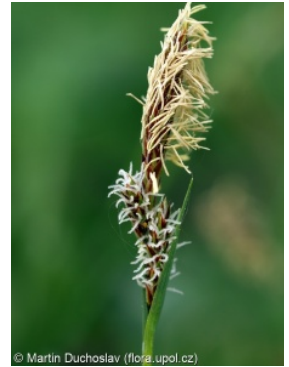
6E Wet Cirsium meadows: **1 - rare occurrence**

6F Intermittently wet Molinia meadows: **2 - optimum**

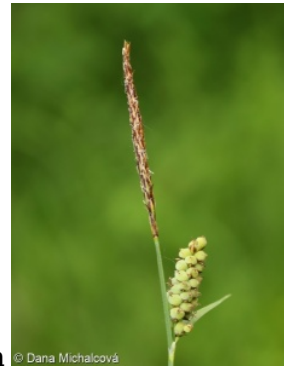
8 Dry grasslands

8D Broad-leaved dry grasslands: **2 - optimum**

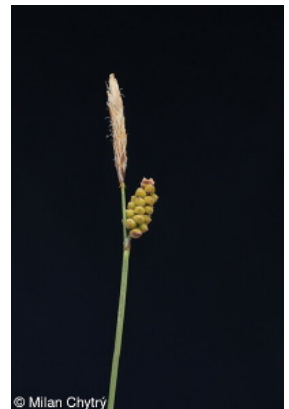
8F Thermophilous forest fringe vegetation: **2 - optimum**



© Martin Duchoslav (flora.upol.cz)



© Dana Michalčová



© Milan Chytrý



© Milan Chytrý

10 Saline vegetation

10I Inland saline meadows: **2 - optimum**

11 Heathlands and scrub

11L Tall mesic and xeric shrub: **1 - rare occurrence**

12 Forests

12I Sub-continental thermophilous oak forests: **1 - rare occurrence**

12W Pine and larch plantations: **1 - rare occurrence**

Affinity to the forest environment

Affinity to the forest environment in Thermophyticum: **2.2 - taxon occurring partly in the forest, but mainly in open vegetation**

Affinity to the forest environment in Mesophyticum and Oreophyticum: **2.2 - taxon occurring partly in the forest, but mainly in open vegetation**

Diagnostic taxon

Diagnostic taxon of associations: [THE04 Plantagini maritimae-Caricetum flacca](#)

Constant taxon

Constant taxon of associations: [THE04 Plantagini maritimae-Caricetum flacca](#)

Ecological specialization indices

Ecological specialization index for all vegetation types: **5.1**

Ecological specialization index for non-forest vegetation: **5.2**

Ecological specialization index for forest vegetation: **4.2**

Colonization ability

Index of colonization success (ICS): **2**

Index of colonization potential (ICP): **1**

Optimum successional age [years]: **8**

Distribution and frequency

Floristic zone: **northern temperate, southern temperate, submeridional**

Floristic region: **Europe, Western Asia**

Continental degree: **6**

Distribution range extension along the continentality gradient: **5**

Elevational belt in the Czech Republic: **lowlands, colline belt, submontane belt**

Occurrence frequency in the basic grid mapping cells and quadrants of the basic grid mapping cells: **303**

taxon.data.freq_in_quad: 697

Commonness in vegetation plots from the Czech Republic

Occurrence frequency in vegetation plots: **0.6 %**

Occurrence frequency in vegetation plots with a cover above 5%: **20.4 %**

Occurrence frequency in vegetation plots with a cover above 25%: **5.5 %**

Occurrence frequency in vegetation plots with a cover above 50%: **0.6 %**

Mean percentage cover in vegetation plots: **5.9 %**

Maximum percentage cover in vegetation plots: **63 %**

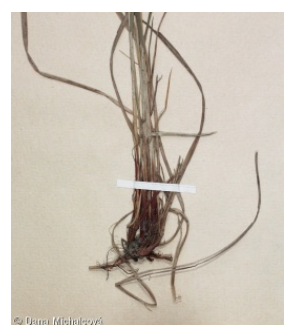
Number of habitats with taxon occurrence in the Czech Republic

Number of narrow habitats in which the taxon occurs: **14**

Number of narrow habitats in which the taxon has its optimum: **5**

Number of broad habitats in which the taxon occurs: **6**

Number of broad habitats in which the taxon has its optimum: **4**



Threats and protection

Red List 2017 (national categories): **taxon is not on the Red List**

Red List 2017 (IUCN categories): **LC(NA) - least concern (taxon is not on the Red List)**

Legal protection: **not protected by law**

