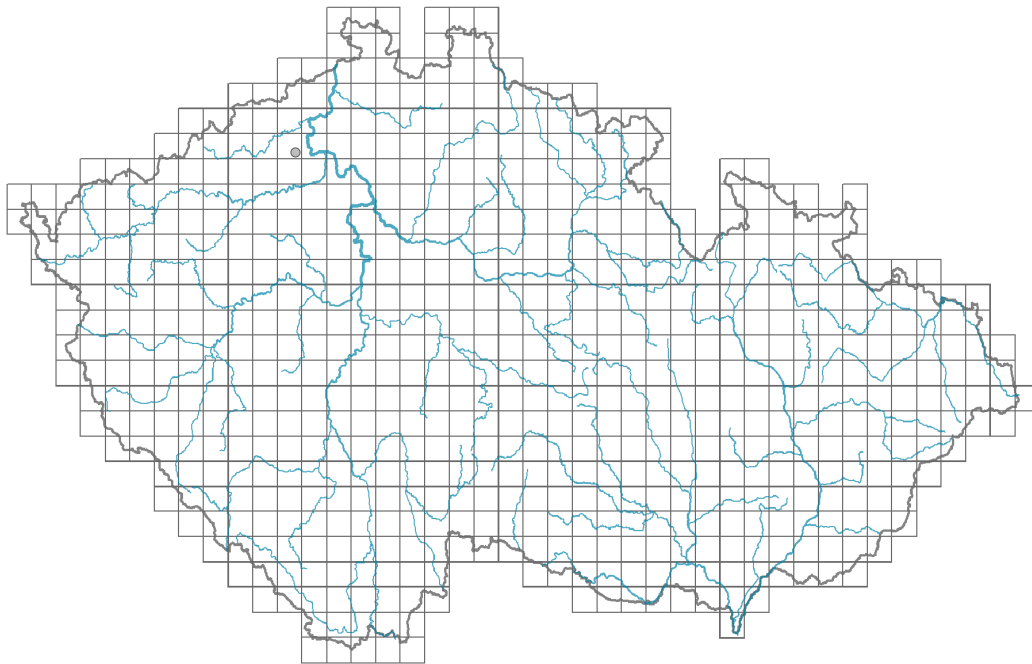


Clinopodium grandiflorum

Distribution



© Dana Michalcová

Map info

● revised records

○ unrevised records

On the map are not visualized records without the coordinates and records marked as incorrect or doubtful.

Habitus and growth type

Height [m]: **0.2-0.7**

Growth form: **clonal herb**

Life form: **hemicryptophyte**

Leaf

Leaf presence and metamorphosis: **leaves present, not modified**

Leaf arrangement (phyllotaxis): **opposite**

Leaf shape: **simple - entire**

Stipules: **absent**

Petiole: **present**

Flower

Flowering period [month]: **July-September**

Flower colour: **pink, pink-violet**

Flower symmetry: **zygomorphic**

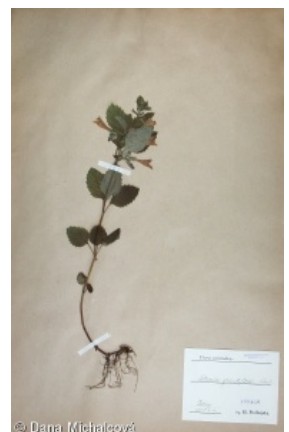
Perianth type: **calyx and corolla**

Perianth fusion: **fused**

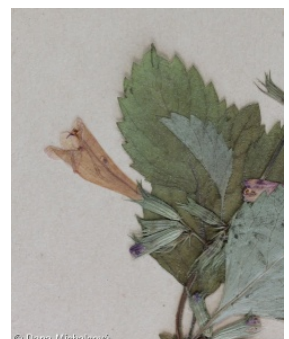
Shape of the sympetalous corolla or syntepalous perianth: **bilabiate**

Calyx fusion: **synsepalous**

Inflorescence type: **pseudospica e verticillastris composita**



© Dana Michalcová



© Dana Michalcová

Generative reproduction type: **facultative allogamy**

Fruit, seed and dispersal

Fruit type: **dry fruit - cluster of four one-seeded nutlets**

Myrmecochory: **myrmecochorous**

Trophic mode

Parasitism and mycoheterotrophy: **autotrophic**

Carnivory: **non-carnivorous**

Symbiotic nitrogen fixation: **no nitrogen-fixing symbionts**

Taxon origin

Origin in the Czech Republic: **neophyte**

Invasion status: **casual**

Geographic origin: **Europe, Mediterranean**

Year of the first record in the wild: **1945**

Period of introduction: **Late Modern Period (1800-1950)**

Introduction pathway: **intentional - ornamental**



Habitat and sociology

Affinity to the forest environment

Affinity to the forest environment in Thermophyticum: **0 - taxon that does not spontaneously occur in Czech forests**

Affinity to the forest environment in Mesophyticum and Oreophyticum: **0 - taxon that does not spontaneously occur in Czech forests**

Threats and protection

Red List 2017 (national categories): **taxon is not on the Red List**

Red List 2017 (IUCN categories): **LC(NA) - least concern (taxon is not on the Red List)**

Legal protection: **not protected by law**