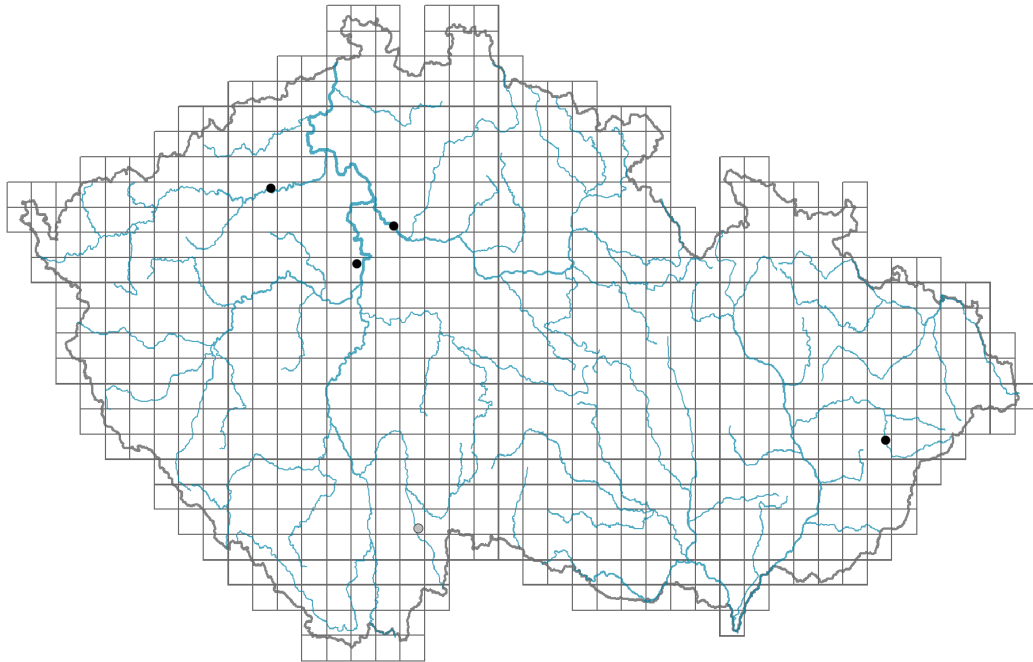


Crepis nicaeensis

Distribution

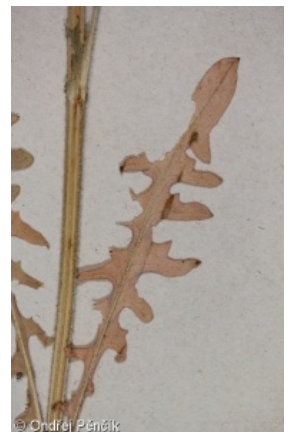


Map info

● revised records

● unrevised records

On the map are not visualized records without the coordinates and records marked as incorrect or doubtful.



Habitus and growth type

Height [m]: **0.3-0.9**

Growth form: **monocarpic perennial non-clonal herb**

Life form: **hemicryptophyte (therophyte)**

Life strategy: **CSR - competitor/stress-tolerator/ruderal**

Leaf

Leaf presence and metamorphosis: **leaves present, not modified**

Leaf arrangement (phyllotaxis): **alternate, rosulate**

Leaf shape: **simple - entire, simple - pinnately divided**

Stipules: **absent**

Petiole: **both present and absent**

Leaf anatomy: **mesomorphic**

Flower

Flowering period [month]: **May-June**

Flower colour: **yellow**

Flower symmetry: **zygomorphic**

Perianth type: **calyx reduced, corolla present**

Perianth fusion: **fused**

Shape of the sympetalous corolla or syntepalous perianth: **ligulate**

Calyx fusion: **pappus**

Inflorescence type: **corymbothyrus ex anthodiis compositus**

Dicliny: **synoecious**

Pollination syndrome: **insect-pollination, selfing**

Fruit, seed and dispersal

Fruit type: **dry fruit - achene/cypsela/samara**

Reproduction type: **only by seed/spores**

Dispersal unit (diaspore): **fruit, infrutescence or its part**

Dispersal strategy: **Epilobium (mainly anemochory and autochory)**

Myrmecochory: **non-myrmecochorous (b) nv**



Belowground organs and clonality

Shoot metamorphosis: **rhizome**

Storage organ: **rhizome**

Shoot life span (cyclicity): **dicyclic or polycyclic shoots prevailing**

Primary root: **present**

Bud bank

Number of buds per shoot at the soil surface (root buds excluded):

Number of buds per shoot at a depth of 0-10 cm (root buds excluded):

Number of buds per shoot at a depth greater than 10 cm (root buds excluded):

Size of the belowground bud bank (root buds excluded):

Depth of the belowground bud bank (root buds excluded) [cm]:

Number of buds per shoot at the soil surface (root buds included):

Number of buds per shoot at a depth of 0-10 cm (root buds included):

Number of buds per shoot at a depth greater than 10 cm (root buds included):

Size of the belowground bud bank (root buds included):

Depth of the belowground bud bank (root buds included) [cm]:

Trophic mode

Parasitism and mycoheterotrophy: **autotrophic**

Carnivory: **non-carnivorous**

Symbiotic nitrogen fixation: **no nitrogen-fixing symbionts**

Taxon origin

Origin in the Czech Republic: **neophyte**

Invasion status: **casual**

Geographic origin: **Mediterranean**

Year of the first record in the wild: **1880**

Year of the last record: **1884**

Period of introduction: **Late Modern Period (1800-1950)**

Introduction pathway: **unintentional - plantations, unintentional - anthropogenic**

Ecological indicator values

Ellenberg-type indicator values

Light indicator value: **8 - light plant, only exceptionally occurring at less than 40% of diffuse radiation incident in an open area**

Temperature indicator value: **6 - transition between values 5 and 7**

Moisture indicator value: **4 - transition between values 3 and 5**

Reaction indicator value: **7 - indicator of slightly acidic to slightly basic conditions, never occurring in very acidic conditions**

Nutrient indicator value: **6 - transition between values 5 and 7**

Salinity indicator value: **1 - salt tolerant, mostly on low-salt to salt-free soils, but occasionally on slightly salty soils**

Habitat and sociology

Affinity to the forest environment

Affinity to the forest environment in Thermophyticum: **0 - taxon that does not spontaneously occur in Czech forests**

Affinity to the forest environment in Mesophyticum and Oreophyticum: **0 - taxon that does not spontaneously occur in Czech forests**

Distribution and frequency

Floristic zone: **southern temperate, submeridional**

Floristic region: **Europe**

Continentality degree: **4**

Distribution range extension along the continentality gradient: **2**

Occurrence frequency in the basic grid mapping cells and quadrants of the basic grid mapping cells: **5**

taxon.data.freq_in_quad: 5

Threats and protection

Red List 2017 (national categories): **taxon is not on the Red List**

Red List 2017 (IUCN categories): **LC(NA) - least concern (taxon is not on the Red List)**

Legal protection: **not protected by law**