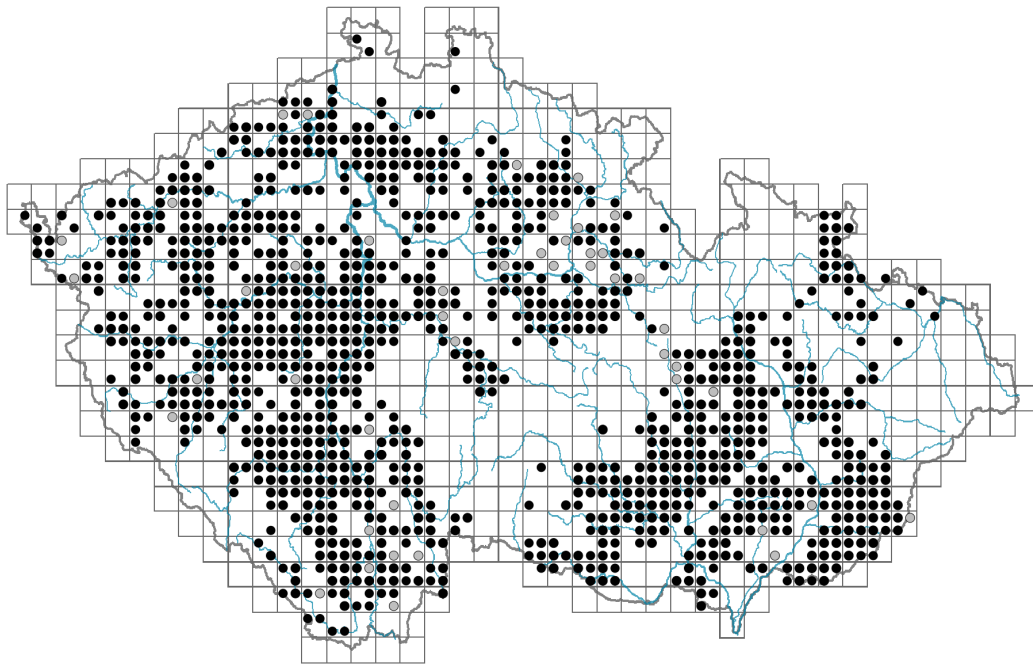


Cytisus nigricans

Distribution



© Vladimír Nejšpěleba

Map info

● revised records

● unrevised records

On the map are not visualized records without the coordinates and records marked as incorrect or doubtful.



© Pavel Větrov



© Vladimír Nejšpěleba



© Dana Michalčová

Habitus and growth type

Height [m]: **0.3-2**

Growth form: **shrub**

Life form: **nanophanerophyte**

Life strategy: **C - competitor**

Life strategy (Pierce method based on leaf traits): **S/CSR**

Life strategy (Pierce method, C-score): **11.7 %**

Life strategy (Pierce method, S-score): **58 %**

Life strategy (Pierce method, R-score): **30.3 %**

Leaf

Leaf presence and metamorphosis: **leaves present, not modified**

Leaf arrangement (phyllotaxis): **alternate**

Leaf shape: **compound - ternate**

Stipules: **absent**

Petiole: **present**

Leaf life span: **summer green**

Leaf deciduousness in woody plants: **winter deciduous**

Leaf anatomy: **mesomorphic**

Functional leaf type in woody plants: **broad deciduous or semi-deciduous**

Flower

Flowering period [month]: **May-August**

Flowering phase: **8 Clematis vitalba-Galium sylvaticum (mid-summer)**

Flower colour: **yellow**

Flower symmetry: **zygomorphic**

Perianth type: **calyx and corolla**

Perianth fusion: **free**

Calyx fusion: **synsepalous**

Inflorescence type: **racemus**

Dicliny: **synoecious**

Generative reproduction type: **allogamy self-incompatibility**

Pollination syndrome: **insect-pollination**



Fruit, seed and dispersal

Fruit type: **dry fruit - legume**

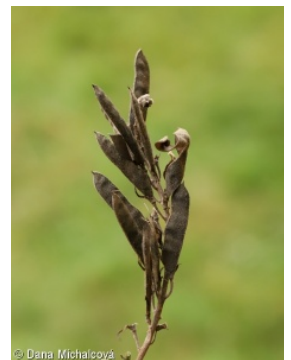
Fruit colour: **brown, black**

Reproduction type: **only by seed/spores**

Dispersal unit (diaspore): **seed**

Dispersal strategy: **Allium (mainly autochory)**

Myrmecochory: **myrmecochorous**



Belowground organs and clonality

Primary root: **present**

Bud bank

Number of buds per shoot at the soil surface (root buds excluded): **15**

Number of buds per shoot at a depth of 0–10 cm (root buds excluded): **15**

Number of buds per shoot at a depth greater than 10 cm (root buds excluded): **0**

Size of the belowground bud bank (root buds excluded): **30**

Depth of the belowground bud bank (root buds excluded) [cm]: **3**

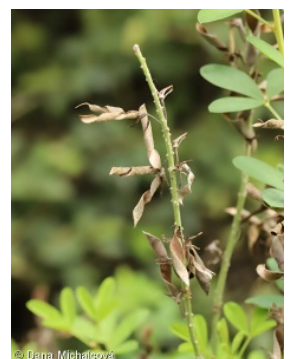
Number of buds per shoot at the soil surface (root buds included): **15**

Number of buds per shoot at a depth of 0–10 cm (root buds included): **15**

Number of buds per shoot at a depth greater than 10 cm (root buds included): **0**

Size of the belowground bud bank (root buds included): **30**

Depth of the belowground bud bank (root buds included) [cm]: **3**



Trophic mode

Parasitism and mycoheterotrophy: **autotrophic**

Carnivory: **non-carnivorous**

Symbiotic nitrogen fixation: **symbiosis with rhizobia**

Karyology

Chromosome number (2n): **48**

Ploidy level (x): **4**

2C genome size [Mbp]: **1755.99**

1Cx monoploid genome size [Mbp]: **439**

Genomic GC content: **37.6 %**

Taxon origin

Origin in the Czech Republic: **native**

Ecological indicator values

Ellenberg-type indicator values

Light indicator value: **6 - transition between values 5 and 7; rarely at less than 20% of diffuse radiation incident in an open area**

Temperature indicator value: **6 - transition between values 5 and 7**

Moisture indicator value: **4 - transition between values 3 and 5**

Reaction indicator value: **6 - transition between values 5 and 7**

Nutrient indicator value: **3 - occurring at nutrient-poor sites more frequently than at average sites and exceptionally at rich sites**

Salinity indicator value: **0 - not salt tolerant, glycophyte**

Indicator values for disturbance

Whole-community disturbance frequency indicator value: **-1.71**

Herb layer disturbance frequency indicator value: **-0.71**

Whole-community disturbance severity indicator value: **0.23**

Herb layer disturbance severity indicator value: **0.15**

Whole-community structure based disturbance indicator value: **0.23**

Herb layer structure-based disturbance indicator value: **0.29**

Habitat and sociology

Occurrence in habitats

1 Vegetation of cliffs, screes and walls

1A Calcareous cliffs: **1 - rare occurrence**

1B Siliceous cliffs and block fields: **1 - rare occurrence**

1D Mobile calcareous screes: **1 - rare occurrence**

6 Meadows and mesic pastures

6C Pastures and park grasslands: **1 - rare occurrence**

7 Acidophilous grasslands

7B Submontane Nardus grasslands: **1 - rare occurrence**

8 Dry grasslands

8A Hercynian dry grasslands on rock outcrops: **1 - rare occurrence**

8B Submediterranean dry grasslands on rock outcrops: **2 - optimum**

8C Narrow-leaved sub-continental steppes: **1 - rare occurrence**

8D Broad-leaved dry grasslands: **1 - rare occurrence**

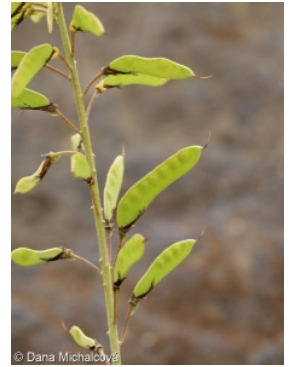
8E Acidophilous dry grasslands: **1 - rare occurrence**

8F Thermophilous forest fringe vegetation: **2 - optimum**

9 Sand grasslands and rock-outcrop vegetation

9E Acidophilous vegetation of spring therophytes and succulents: **1 - rare occurrence**

9F Basiphilous vegetation of spring therophytes and succulents: **1 - rare occurrence**



11 Heathlands and scrub

11A Dry lowland to subalpine heathlands: **2 - optimum**

11L Tall mesic and xeric shrub: **1 - rare occurrence**

11N Low xeric scrub: **2 - optimum**

12 Forests

12C Oak-hornbeam forests: **1 - rare occurrence**

12D Ravine forests: **1 - rare occurrence**

12F Limestone beech forests: **1 - rare occurrence**

12G Acidophilous beech forests: **1 - rare occurrence**

12H Peri-Alpidic basiphilous thermophilous oak forests: **2 - optimum**

12I Sub-continental thermophilous oak forests: **2 - optimum**

12J Acidophilous thermophilous oak forests: **2 - optimum**

12K Acidophilous oak forests: **2 - optimum**

12L Boreo-continental pine forests: **2 - optimum**

12O Peri-Alpidic pine forests: **2 - optimum**

12V Spruce plantations: **1 - rare occurrence**

12W Pine and larch plantations: **2 - optimum**

13 Anthropogenic vegetation

13F Herbaceous vegetation of forests clearings and Rubus scrub: **1 - rare occurrence**

Affinity to the forest environment

Affinity to the forest environment in Thermophyticum: **2.1 - taxon occurring both in the forest and open vegetation**

Affinity to the forest environment in Mesophyticum and Oreophyticum: **2.1 - taxon occurring both in the forest and open vegetation**

Diagnostic taxon

Diagnostic taxon of classes: [LD *Quercetea robori-petraeae*](#)

Diagnostic taxon of alliances: [LDA *Quercion roboris*](#)

Diagnostic taxon of associations: [LDA02 *Viscario vulgaris-Quercetum petraeae*](#),
[THC04 *Asplenio cuneifolii-Seslerietum caeruleae*](#)

Constant taxon

Constant taxon of associations: [LDA02 *Viscario vulgaris-Quercetum petraeae*](#),
[THC04 *Asplenio cuneifolii-Seslerietum caeruleae*](#)

Ecological specialization indices

Ecological specialization index for all vegetation types: **4.2**

Ecological specialization index for non-forest vegetation: **4.2**

Ecological specialization index for forest vegetation: **4.8**

Colonization ability

Index of colonization success (ICS): **4**

Index of colonization potential (ICP): **4**

Optimum successional age [years]: **75**

Distribution and frequency

Floristic zone: **northern temperate, southern temperate, submeridional**

Floristic region: **Europe**

Continental degree: **6**

Distribution range extension along the continentality gradient: **2**

Elevational belt in the Czech Republic: **colline belt, submontane belt (lowlands, montane belt)**

Occurrence frequency in the basic grid mapping cells and quadrants of the basic grid mapping cells: 426

taxon.data.freq_in_quad: 1107

Commonness in vegetation plots from the Czech Republic

Occurrence frequency in vegetation plots: **0.8 %**

Occurrence frequency in vegetation plots with a cover above 5%: **9.8 %**

Occurrence frequency in vegetation plots with a cover above 25%: **0.9 %**

Occurrence frequency in vegetation plots with a cover above 50%: **0.4 %**

Mean percentage cover in vegetation plots: **3.5 %**

Maximum percentage cover in vegetation plots: **88 %**

Number of habitats with taxon occurrence in the Czech Republic

Number of narrow habitats in which the taxon occurs: **29**

Number of narrow habitats in which the taxon has its optimum: **11**

Number of broad habitats in which the taxon occurs: **8**

Number of broad habitats in which the taxon has its optimum: **3**

Threats and protection

Red List 2017 (national categories): **taxon is not on the Red List**

Red List 2017 (IUCN categories): **LC(NA) - least concern (taxon is not on the Red List)**

Legal protection: **not protected by law**