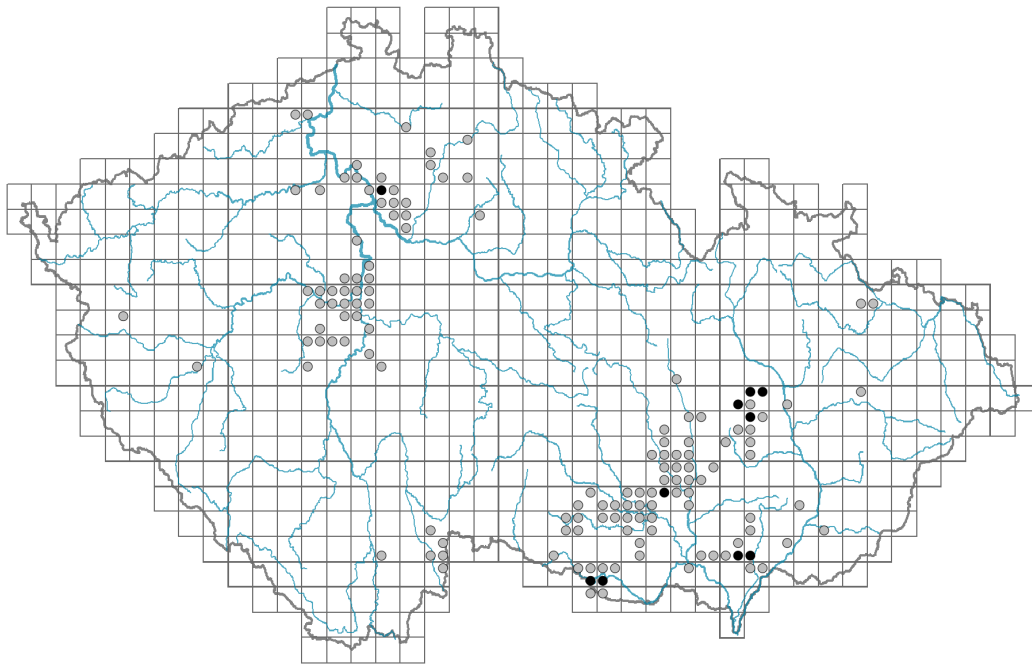


Daphne cneorum

Distribution



© Vladimír Nejšlechta

Map info

● revised records

○ unrevised records

On the map are not visualized records without the coordinates and records marked as incorrect or doubtful.

Habitus and growth type

Height [m]: **0.1-0.3**

Growth form: **dwarf shrub**

Life form: **chamaephyte**

Life strategy: **CS - competitor/stress-tolerator**

Life strategy (Pierce method based on leaf traits): **S/SR**

Life strategy (Pierce method, C-score): **3.2 %**

Life strategy (Pierce method, S-score): **71.3 %**

Life strategy (Pierce method, R-score): **25.5 %**

Leaf

Leaf presence and metamorphosis: **leaves present, not modified**

Leaf arrangement (phyllotaxis): **alternate**

Leaf shape: **simple - entire**

Stipules: **absent**

Petiole: **absent**

Leaf life span: **evergreen**

Leaf deciduousness in woody plants: **winter deciduous**

Leaf anatomy: **scleromorphic**

Functional leaf type in woody plants: **broad deciduous or semi-deciduous**



© Petra Lovecká



© Petra Lovecká



© Milan Čížek

Flower

Flowering period [month]: **April-June**

Flower colour: **pink-violet**

Flower symmetry: **actinomorphic**

Perianth type: **calyx present, corolla absent**

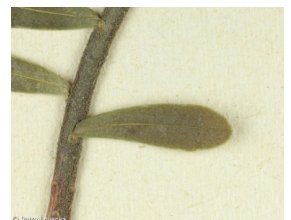
Calyx fusion: **synsepalous**

Inflorescence type: **fasciculus**

Dicliny: **synoecious**

Generative reproduction type: **facultative allogamy**

Pollination syndrome: **insect-pollination, selfing**



Fruit, seed and dispersal

Fruit type: **fleshy fruit - drupe**

Fruit colour: **red, brown**

Reproduction type: **only by seed/spores**

Dispersal unit (diaspore): **seed, fruit, infructescence or its part**

Dispersal strategy: **Cornus (mainly autochory and endozoochory)**

Myrmecochory: **non-myrmecochorous (b)**

Belowground organs and clonality

Primary root: **present**

Bud bank

Number of buds per shoot at the soil surface (root buds excluded):

Number of buds per shoot at a depth of 0–10 cm (root buds excluded):

Number of buds per shoot at a depth greater than 10 cm (root buds excluded):

Size of the belowground bud bank (root buds excluded):

Depth of the belowground bud bank (root buds excluded) [cm]:

Number of buds per shoot at the soil surface (root buds included):

Number of buds per shoot at a depth of 0–10 cm (root buds included):

Number of buds per shoot at a depth greater than 10 cm (root buds included):

Size of the belowground bud bank (root buds included):

Depth of the belowground bud bank (root buds included) [cm]:



Trophic mode

Parasitism and mycoheterotrophy: **autotrophic**

Carnivory: **non-carnivorous**

Symbiotic nitrogen fixation: **no nitrogen-fixing symbionts**

Karyology

Chromosome number (2n): **18**

Ploidy level (x): **2**

2C genome size [Mbp]: **4644.05**

1Cx monoploid genome size [Mbp]: **2322.03**

Genomic GC content: **42.4 %**

Taxon origin

Origin in the Czech Republic: **native**

Ecological indicator values

Ellenberg-type indicator values

Light indicator value: **6 - transition between values 5 and 7; rarely at less than 20% of diffuse radiation incident in an open area**

Temperature indicator value: **6 - transition between values 5 and 7**

Moisture indicator value: **4 - transition between values 3 and 5**

Reaction indicator value: **7 - indicator of slightly acidic to slightly basic conditions, never occurring in very acidic conditions**

Nutrient indicator value: **2 - transition between values 1 and 3**

Salinity indicator value: **0 - not salt tolerant, glycophyte**

Habitat and sociology

Occurrence in habitats

6 Meadows and mesic pastures

6A Mesic Arrhenatherum meadows: **1 - rare occurrence**

8 Dry grasslands

8D Broad-leaved dry grasslands: **1 - rare occurrence**

11 Heathlands and scrub

11A Dry lowland to subalpine heathlands: **1 - rare occurrence**

12 Forests

12I Sub-continental thermophilous oak forests: **2 - optimum**

12K Acidophilous oak forests: **1 - rare occurrence**

12L Boreo-continental pine forests: **2 - optimum**

Affinity to the forest environment

Affinity to the forest environment in Thermophyticum: **2.1 - taxon occurring both in the forest and open vegetation**

Affinity to the forest environment in Mesophyticum and Oreophyticum: **2.1 - taxon occurring both in the forest and open vegetation**

Ecological specialization indices

Ecological specialization index for all vegetation types: **4.9**

Colonization ability

Index of colonization success (ICS): **1**

Distribution and frequency

Floristic zone: **southern temperate, submeridional**

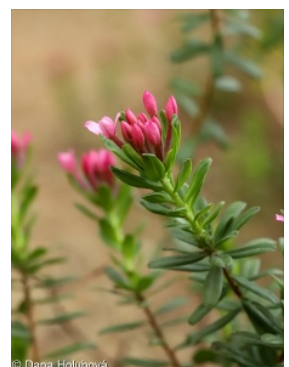
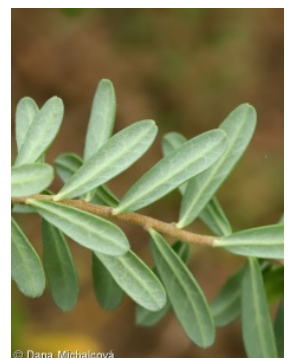
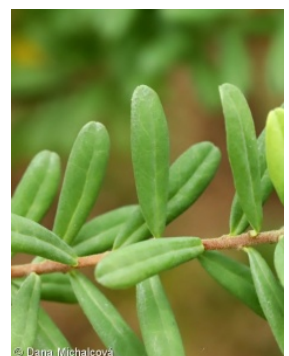
Floristic region: **Europe**

Continental degree: **5**

Distribution range extension along the continentality gradient: **3**

Elevational belt in the Czech Republic: **lowlands, colline belt**

Occurrence frequency in the basic grid mapping cells and quadrants of the basic grid mapping cells: **82**



taxon.data.freq_in_quad: 142

Commonness in vegetation plots from the Czech Republic

Occurrence frequency in vegetation plots: **0 %**

Occurrence frequency in vegetation plots with a cover above 5%: **50 %**

Occurrence frequency in vegetation plots with a cover above 25%: **0 %**

Occurrence frequency in vegetation plots with a cover above 50%: **0 %**

Mean percentage cover in vegetation plots: **7.5 %**

Maximum percentage cover in vegetation plots: **13 %**

Number of habitats with taxon occurrence in the Czech Republic

Number of narrow habitats in which the taxon occurs: **6**

Number of narrow habitats in which the taxon has its optimum: **2**

Number of broad habitats in which the taxon occurs: **4**

Number of broad habitats in which the taxon has its optimum: **1**

Threats and protection

Red List 2017 (national categories): **C1t - critically threatened taxon, declining**

Red List 2017 (IUCN categories): **CR - critically endangered**

Legal protection: **critically threatened taxon**

