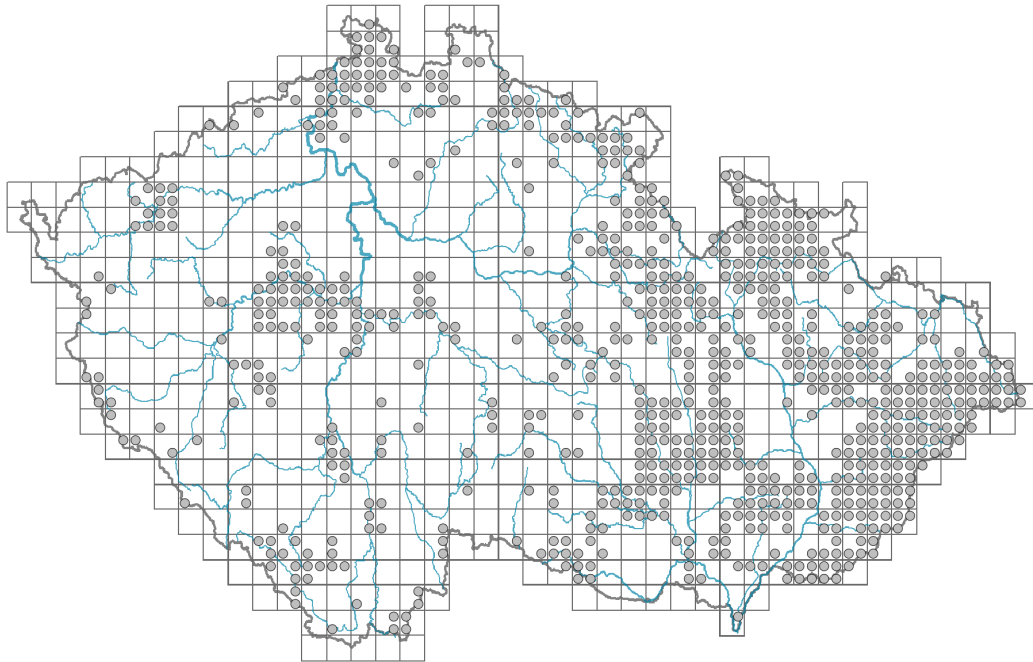


Dentaria bulbifera

Distribution



Map info

● revised records

○ unrevised records

On the map are not visualized records without the coordinates and records marked as incorrect or doubtful.

Habitus and growth type

Height [m]: **0.3-0.6**

Growth form: **clonal herb**

Life form: **geophyte**

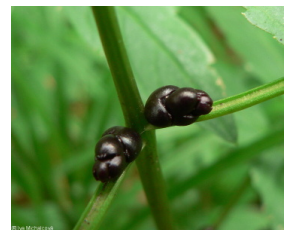
Life strategy: **CSR - competitor/stress-tolerator/ruderal**

Life strategy (Pierce method based on leaf traits): **CR**

Life strategy (Pierce method, C-score): **40.3 %**

Life strategy (Pierce method, S-score): **0 %**

Life strategy (Pierce method, R-score): **59.7 %**



Leaf

Leaf presence and metamorphosis: **leaves present, not modified**

Leaf arrangement (phyllotaxis): **alternate**

Leaf shape: **compound - imparipinnate**

Stipules: **absent**

Petiole: **present**

Leaf life span: **summer green**

Leaf anatomy: **hygromorphic**



Flower

Flowering period [month]: **April-May**

Flowering phase: **4 Fagus sylvatica-Galeobdolon (start of mid-spring)**

Flower colour: **pink, pink-violet**

Flower symmetry: **actinomorphic**

Perianth type: **calyx and corolla**

Perianth fusion: **free**

Calyx fusion: **aposepalous**

Inflorescence type: **racemus**

Dicliny: **synoecious**

Generative reproduction type: **allogamy self-incompatibility**

Pollination syndrome: **insect-pollination**



Fruit, seed and dispersal

Fruit type: **dry fruit - siliqua**

Fruit colour: **brown**

Reproduction type: **mostly vegetatively, rarely by seed/spores**

Dispersal unit (diaspore): **seed, bulbil or tuber**

Dispersal strategy: **Allium (mainly autochory)**

Myrmecochory: **non-myrmecochorous (b)**

Belowground organs and clonality

Shoot metamorphosis: **rhizome, bulbil**

Storage organ: **rhizome, bulbil**

Type of clonal growth organ: **hypogeogenous rhizome**

Freely dispersible organs of clonal growth: **present**

Shoot life span (cyclicity): **monocyclic shoots prevailing**

Branching type of stem-derived organs of clonal growth: **sympodial**

Primary root: **absent**

Persistence of the clonal growth organ [year]: **3.2**

Number of clonal offspring: **4.2**

Lateral spreading distance by clonal growth [m]: **0.13**

Clonal index: **3**

Bud bank

Number of buds per shoot at the soil surface (root buds excluded):

Number of buds per shoot at a depth of 0–10 cm (root buds excluded):

Number of buds per shoot at a depth greater than 10 cm (root buds excluded):

Size of the belowground bud bank (root buds excluded):

Depth of the belowground bud bank (root buds excluded) [cm]: **5**

Number of buds per shoot at the soil surface (root buds included):

Number of buds per shoot at a depth of 0–10 cm (root buds included):

Number of buds per shoot at a depth greater than 10 cm (root buds included):

Size of the belowground bud bank (root buds included):

Depth of the belowground bud bank (root buds included) [cm]: **5**



Trophic mode

Parasitism and mycoheterotrophy: **autotrophic**

Carnivory: **non-carnivorous**

Symbiotic nitrogen fixation: **no nitrogen-fixing symbionts**

Karyology

Chromosome number (2n): **96**

Ploidy level (x): **12**

2C genome size [Mbp]: **3685.37**

1Cx monoploid genome size [Mbp]: **307.11**

Genomic GC content: **38.7 %**

Taxon origin

Origin in the Czech Republic: **native**

Ecological indicator values

Ellenberg-type indicator values

Light indicator value: **3 - shade plant, usually occurring where the incident radiation is less than 5% of that in an open area, but also at sunnier sites**

Temperature indicator value: **5 - moderate heat indicator, occurring from lowland to montane belt, mainly in submontane-temperate areas**

Moisture indicator value: **5 - indicator of fresh soils, focus on soils of average moisture, missing on wet and on soils that frequently dry out**

Reaction indicator value: **6 - transition between values 5 and 7**

Nutrient indicator value: **6 - transition between values 5 and 7**

Salinity indicator value: **0 - not salt tolerant, glycophyte**

Indicator values for disturbance

Whole-community disturbance frequency indicator value: **-1.97**

Herb layer disturbance frequency indicator value: **-0.7**

Whole-community disturbance severity indicator value: **0.25**

Herb layer disturbance severity indicator value: **0.07**

Whole-community structure based disturbance indicator value: **0.11**

Herb layer structure-based disturbance indicator value: **0.2**

Habitat and sociology

Occurrence in habitats

5 Vegetation of springs and mires

5A Hard-water springs with tufa formation: **1 - rare occurrence**

5B Lowland to montane soft-water springs: **1 - rare occurrence**

8 Dry grasslands

8F Thermophilous forest fringe vegetation: **1 - rare occurrence**

11 Heathlands and scrub

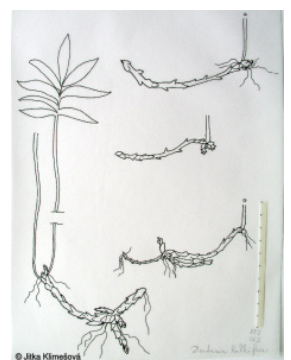
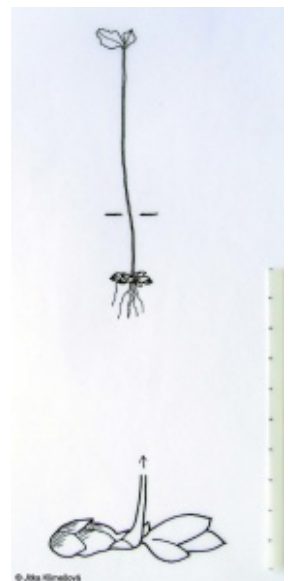
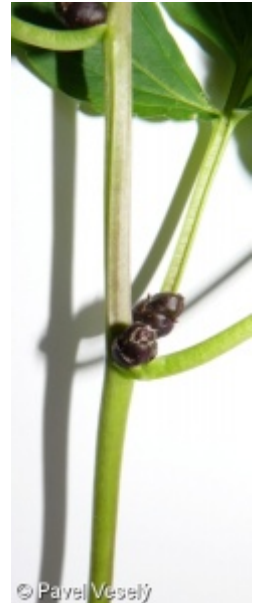
11L Tall mesic and xeric shrub: **1 - rare occurrence**

11R Scrub and pioneer woodland of forests clearings: **1 - rare occurrence**

12 Forests

12B Alluvial forests: **1 - rare occurrence**

12C Oak-hornbeam forests: **2 - optimum**



12D Ravine forests: **2 - optimum**

12E Herb-rich beech forests: **2 - optimum**

12F Limestone beech forests: **1 - rare occurrence**

12G Acidophilous beech forests: **1 - rare occurrence**

12H Peri-Alpidic basiphilous thermophilous oak forests: **1 - rare occurrence**

12I Sub-continental thermophilous oak forests: **1 - rare occurrence**

12J Acidophilous thermophilous oak forests: **1 - rare occurrence**

12U Plantations of broad-leaved non-native trees: **1 - rare occurrence**

12V Spruce plantations: **1 - rare occurrence**

12W Pine and larch plantations: **1 - rare occurrence**

13 Anthropogenic vegetation

13E Perennial nitrophilous herbaceous vegetation of mesic sites: **1 - rare occurrence**

13F Herbaceous vegetation of forests clearings and Rubus scrub: **2 - optimum**

Affinity to the forest environment

Affinity to the forest environment in Thermophyticum: **1.1 - taxon occurring mainly in the closed forest**

Affinity to the forest environment in Mesophyticum and Oreophyticum: **1.1 - taxon occurring mainly in the closed forest**

Diagnostic taxon

Diagnostic taxon of classes: [LB *Carpino-Fagetea*](#)

Diagnostic taxon of alliances: [LBC *Fagion sylvaticae*](#)

Diagnostic taxon of associations: [LBC01 *Galio odorati-Fagetum sylvaticae*](#), [LBC02 *Mercuriali perennis-Fagetum sylvaticae*](#), [LBC03 *Carici pilosae-Fagetum sylvaticae*](#)

Constant taxon

Constant taxon of alliances: [LBC *Fagion sylvaticae*](#)

Constant taxon of associations: [LBC01 *Galio odorati-Fagetum sylvaticae*](#), [LBC02 *Mercuriali perennis-Fagetum sylvaticae*](#), [LBC03 *Carici pilosae-Fagetum sylvaticae*](#)

Ecological specialization indices

Ecological specialization index for all vegetation types: **5.7**

Ecological specialization index for non-forest vegetation: **4.5**

Ecological specialization index for forest vegetation: **5.8**

Colonization ability

Index of colonization success (ICS): **3**

Index of colonization potential (ICP): **1**

Optimum successional age [years]: **20**

Distribution and frequency

Floristic zone: **northern temperate, southern temperate, submeridional**

Floristic region: **Europe**

Continental degree: **5**

Distribution range extension along the continentality gradient: **3**

Elevational belt in the Czech Republic: **submontane belt, montane belt**

Occurrence frequency in the basic grid mapping cells and quadrants of the basic grid mapping cells: **342**

taxon.data.freq_in_quad: **760**

Commonness in vegetation plots from the Czech Republic

Occurrence frequency in vegetation plots: **2.3 %**

Occurrence frequency in vegetation plots with a cover above 5%: **18.1 %**

Occurrence frequency in vegetation plots with a cover above 25%: **3.1 %**

Occurrence frequency in vegetation plots with a cover above 50%: **0 %**

Mean percentage cover in vegetation plots: **4.9 %**

Maximum percentage cover in vegetation plots: **38 %**

Number of habitats with taxon occurrence in the Czech Republic

Number of narrow habitats in which the taxon occurs: **19**

Number of narrow habitats in which the taxon has its optimum: **4**

Number of broad habitats in which the taxon occurs: **5**

Number of broad habitats in which the taxon has its optimum: **2**

Threats and protection

Red List 2017 (national categories): **taxon is not on the Red List**

Red List 2017 (IUCN categories): **LC(NA) - least concern (taxon is not on the Red List)**

Legal protection: **not protected by law**