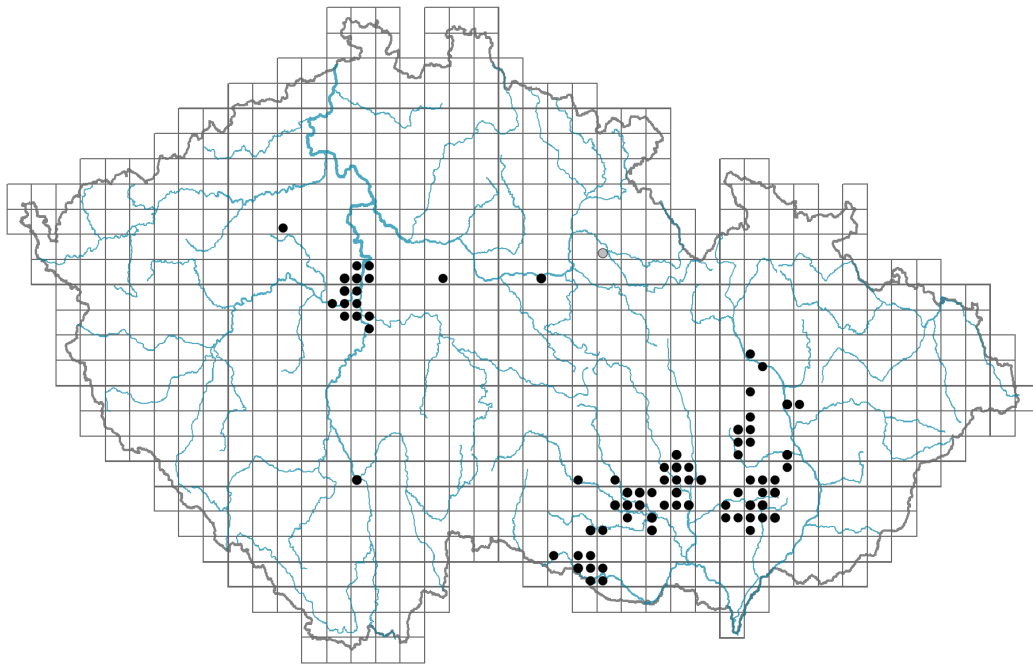


Euphorbia angulata

Distribution



Vladimír Nejšleba

Map info

● revised records

● unrevised records

On the map are not visualized records without the coordinates and records marked as incorrect or doubtful.

Habitus and growth type

Height [m]: **0.3-0.5**

Growth form: **clonal herb**

Life form: **hemicryptophyte (geophyte)**



Radim Čížka

Leaf

Leaf presence and metamorphosis: **leaves present, not modified**

Leaf arrangement (phyllotaxis): **alternate**

Leaf shape: **simple - entire**

Stipules: **absent**

Petiole: **both present and absent**

Flower

Flowering period [month]: **May-June**

Flower colour: **yellow-green**

Perianth type: **flower achlamydeous**

Inflorescence type: **pseudumbella e cyathiis composita**



Ondřej Pěnčík

Fruit, seed and dispersal

Fruit type: **dry fruit - capsule**

Dispersal unit (diaspore): **seed**



Ondřej Pěnčík

Dispersal strategy: **Allium (mainly autochory)**

Myrmecochory: **myrmecochorous nv**

Trophic mode

Parasitism and mycoheterotrophy: **autotrophic**

Carnivory: **non-carnivorous**

Symbiotic nitrogen fixation: **no nitrogen-fixing symbionts**

Karyology

Chromosome number (2n): **18**

Ploidy level (x): **2**

2C genome size [Mbp]: **4656.14**

1Cx monoploid genome size [Mbp]: **2328.07**

Genomic GC content: **40.7 %**

Taxon origin

Origin in the Czech Republic: **native**

Ecological indicator values

Ellenberg-type indicator values

Light indicator value: **6 - transition between values 5 and 7; rarely at less than 20% of diffuse radiation incident in an open area**

Temperature indicator value: **7 - heat indicator, occurring in relatively warm lowlands**

Moisture indicator value: **5 - indicator of fresh soils, focus on soils of average moisture, missing on wet and on soils that frequently dry out**

Reaction indicator value: **6 - transition between values 5 and 7**

Nutrient indicator value: **5 - occurring at moderately nutrient-rich sites, and less frequently at poor and rich sites**

Salinity indicator value: **0 - not salt tolerant, glycophyte**

Habitat and sociology

Occurrence in habitats

8 Dry grasslands

8F Thermophilous forest fringe vegetation: **1 - rare occurrence**

11 Heathlands and scrub

11L Tall mesic and xeric shrub: **1 - rare occurrence**

12 Forests

12C Oak-hornbeam forests: **2 - optimum**

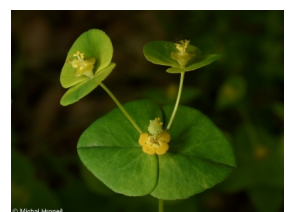
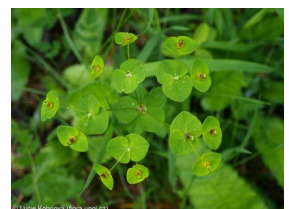
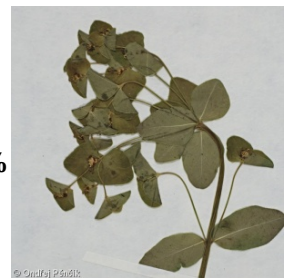
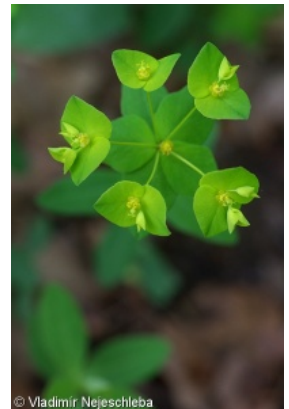
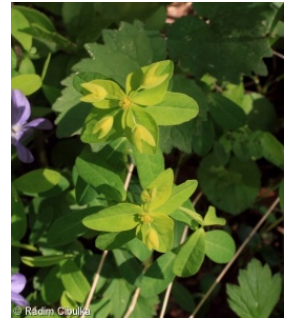
12D Ravine forests: **1 - rare occurrence**

12H Peri-Alpidic basiphilous thermophilous oak forests: **2 - optimum**

12I Sub-continental thermophilous oak forests: **2 - optimum**

12J Acidophilous thermophilous oak forests: **1 - rare occurrence**

12K Acidophilous oak forests: **1 - rare occurrence**



Affinity to the forest environment

Affinity to the forest environment in Thermophyticum: **1.1 - taxon occurring mainly in the closed forest**

Affinity to the forest environment in Mesophyticum and Oreophyticum: **1.1 - taxon occurring mainly in the closed forest**

Ecological specialization indices

Ecological specialization index for all vegetation types: **6**

Colonization ability

Index of colonization success (ICS): **1**

Distribution and frequency

Continentality degree: **4**

Distribution range extension along the continentality gradient: **4**

Elevational belt in the Czech Republic: **colline belt (lowlands)**

Occurrence frequency in the basic grid mapping cells and quadrants of the basic grid mapping cells: **56**

taxon.data.freq_in_quad: **91**

Commonness in vegetation plots from the Czech Republic

Occurrence frequency in vegetation plots: **0 %**

Occurrence frequency in vegetation plots with a cover above 5%: **28.6 %**

Occurrence frequency in vegetation plots with a cover above 25%: **0 %**

Occurrence frequency in vegetation plots with a cover above 50%: **0 %**

Mean percentage cover in vegetation plots: **3.7 %**

Maximum percentage cover in vegetation plots: **8 %**

Number of habitats with taxon occurrence in the Czech Republic

Number of narrow habitats in which the taxon occurs: **8**

Number of narrow habitats in which the taxon has its optimum: **3**

Number of broad habitats in which the taxon occurs: **3**

Number of broad habitats in which the taxon has its optimum: **1**

Threats and protection

Red List 2017 (national categories): **C2r - endangered taxon, rare**

Red List 2017 (IUCN categories): **VU - vulnerable**

Legal protection: **endangered taxon**

