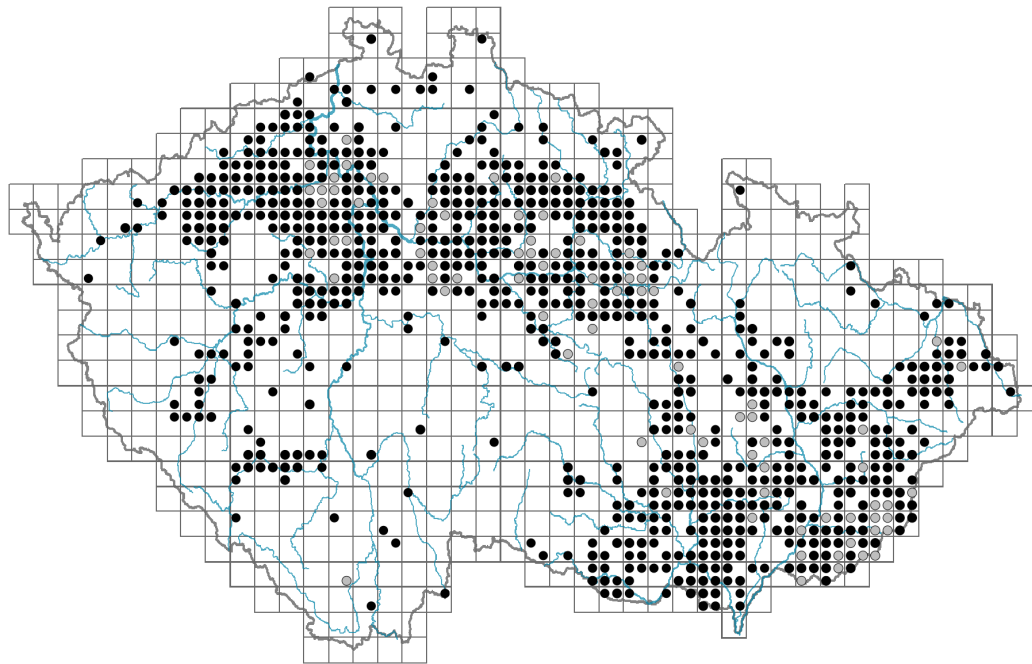


Euphorbia exigua

Distribution



© Vladimír Nejšpíleba

Map info

● revised records

○ unrevised records

On the map are not visualized records without the coordinates and records marked as incorrect or doubtful.

Habitus and growth type

Height [m]: **0.05-0.2**

Growth form: **annual herb**

Life form: **therophyte**

Life strategy: **R - ruderal**

Life strategy (Pierce method based on leaf traits): **R/SR**

Life strategy (Pierce method, C-score): **0.5 %**

Life strategy (Pierce method, S-score): **34.8 %**

Life strategy (Pierce method, R-score): **64.8 %**



© Ondřej Pěnčík

Leaf

Leaf presence and metamorphosis: **leaves present, not modified**

Leaf arrangement (phyllotaxis): **alternate**

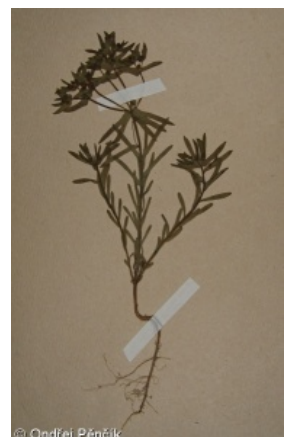
Leaf shape: **simple - entire**

Stipules: **absent**

Petiole: **absent**

Leaf life span: **summer green**

Leaf anatomy: **hygromorphic**



© Ondřej Pěnčík

Flower

Flowering period [month]: **June-September**

Flowering phase: **6 Cornus sanguinea-Melica uniflora (start of early summer)**

Flower colour: **green**

Perianth type: **flower achlamydeous**

Inflorescence type: **pseudumbrella e cyathiis composita**

Dicliny: **synoecious**

Generative reproduction type: **mixed mating**

Pollination syndrome: **insect-pollination**

Fruit, seed and dispersal

Fruit type: **dry fruit - capsule**

Reproduction type: **only by seed/spores**

Dispersal unit (diaspore): **seed**

Dispersal strategy: **Allium (mainly autochory)**

Myrmecochory: **probably myrmecochorous**

Belowground organs and clonality

Shoot life span (cyclicity): **monocyclic shoots prevailing**

Primary root: **present**

Position of root buds: **hypocotyl**

Role of root buds in life-history of a plant: **additive**

Bud bank

Number of buds per shoot at the soil surface (root buds excluded): **4**

Number of buds per shoot at a depth of 0–10 cm (root buds excluded):

Number of buds per shoot at a depth greater than 10 cm (root buds excluded):

Size of the belowground bud bank (root buds excluded): **4**

Depth of the belowground bud bank (root buds excluded) [cm]:

Number of buds per shoot at the soil surface (root buds included): **10**

Number of buds per shoot at a depth of 0–10 cm (root buds included):

Number of buds per shoot at a depth greater than 10 cm (root buds included):

Size of the belowground bud bank (root buds included): **10**

Depth of the belowground bud bank (root buds included) [cm]:

Trophic mode

Parasitism and mycoheterotrophy: **autotrophic**

Carnivory: **non-carnivorous**

Symbiotic nitrogen fixation: **no nitrogen-fixing symbionts**

Karyology

Chromosome number (2n): **24 (16, 26, 28, 56)**

Ploidy level (x): **2**

2C genome size [Mbp]: **1149.61**

1Cx monoploid genome size [Mbp]: **574.81**

Genomic GC content: **38.7 %**



Taxon origin

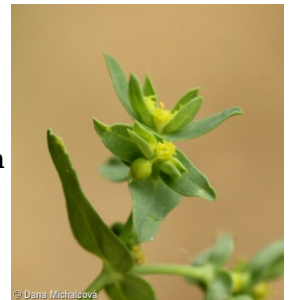
Origin in the Czech Republic: **archaeophyte**

Invasion status: **naturalized**

Geographic origin: **Mediterranean**

Period of introduction: **Late Middle Ages (1200-1500)**

Introduction pathway: **unintentional - agriculture**



Ecological indicator values

Ellenberg-type indicator values

Light indicator value: **7 - half-light plant, mostly occurring at full light, but also in the shade up to about 30% of diffuse radiation incident in an open area**

Temperature indicator value: **6 - transition between values 5 and 7**

Moisture indicator value: **4 - transition between values 3 and 5**

Reaction indicator value: **8 - transition between values 7 and 9, occurring mostly in calcium-rich conditions**

Nutrient indicator value: **5 - occurring at moderately nutrient-rich sites, and less frequently at poor and rich sites**

Salinity indicator value: **0 - not salt tolerant, glycophyte**

Indicator values for disturbance

Whole-community disturbance frequency indicator value: **0.42**

Herb layer disturbance frequency indicator value: **0.42**

Whole-community disturbance severity indicator value: **0.99**

Herb layer disturbance severity indicator value: **0.99**

Whole-community structure based disturbance indicator value: **0.76**

Herb layer structure-based disturbance indicator value: **0.87**

Habitat and sociology

Occurrence in habitats

1 Vegetation of cliffs, screes and walls

1D Mobile calcareous screes: **1 - rare occurrence**

8 Dry grasslands

8C Narrow-leaved sub-continental steppes: **1 - rare occurrence**

8D Broad-leaved dry grasslands: **1 - rare occurrence**

9 Sand grasslands and rock-outcrop vegetation

9F Basiphilous vegetation of spring therophytes and succulents: **1 - rare occurrence**

13 Anthropogenic vegetation

13A Annual vegetation of ruderal habitats: **1 - rare occurrence**

13B Annual vegetation of arable land: **2 - optimum**

13C Annual vegetation of trampled habitats: **1 - rare occurrence**

13D Perennial thermophilous ruderal vegetation: **1 - rare occurrence**

Affinity to the forest environment

Affinity to the forest environment in Thermophyticum: **0 - taxon that does not spontaneously occur in Czech forests**

Affinity to the forest environment in Mesophyticum and Oreophyticum: **0 - taxon that does not spontaneously occur in Czech forests**

Diagnostic taxon

Diagnostic taxon of classes: [XB Stellarietea mediae](#)

Diagnostic taxon of alliances: [XBA Caucalidion](#)

Diagnostic taxon of associations: [XBA01 Caucalido platycarpi-Conringietum orientalis](#), [XBA02 Lathyro tuberosi-Adonidetum aestivalis](#), [XBA03 Euphorbio exiguae-Melandrietum noctiflori](#), [XBA04 Stachyo annuae-Setarietum pumilae](#)

Constant taxon

Constant taxon of associations: [XBA01 Caucalido platycarpi-Conringietum orientalis](#), [XBA03 Euphorbio exiguae-Melandrietum noctiflori](#), [XBA04 Stachyo annuae-Setarietum pumilae](#)

Dominant taxon

Dominant taxon of associations: [XBA01 Caucalido platycarpi-Conringietum orientalis](#)

Ecological specialization indices

Ecological specialization index for all vegetation types: **6.3**

Ecological specialization index for non-forest vegetation: **6.3**

Colonization ability

Index of colonization success (ICS): **4**

Index of colonization potential (ICP): **5**

Optimum successional age [years]: **25**

Distribution and frequency

Floristic zone: **northern temperate, southern temperate, submeridional, meridional**

Floristic region: **Europe**

Continentality degree: **4**

Distribution range extension along the continentality gradient: **4**

Elevational belt in the Czech Republic: **lowlands, colline belt**

Occurrence frequency in the basic grid mapping cells and quadrants of the basic grid mapping cells: **349**

taxon.data.freq_in_quad: **831**

Commonness in vegetation plots from the Czech Republic

Occurrence frequency in vegetation plots: **0.9 %**

Occurrence frequency in vegetation plots with a cover above 5%: **17 %**

Occurrence frequency in vegetation plots with a cover above 25%: **1.9 %**

Occurrence frequency in vegetation plots with a cover above 50%: **0 %**

Mean percentage cover in vegetation plots: **4.9 %**

Maximum percentage cover in vegetation plots: **42 %**

Number of habitats with taxon occurrence in the Czech Republic

Number of narrow habitats in which the taxon occurs: **8**

Number of narrow habitats in which the taxon has its optimum: **1**

Number of broad habitats in which the taxon occurs: **4**

Number of broad habitats in which the taxon has its optimum: **1**

Threats and protection

Red List 2017 (national categories): **C4a - near threatened taxon**

Red List 2017 (IUCN categories): **NT - near threatened**

Legal protection: **not protected by law**