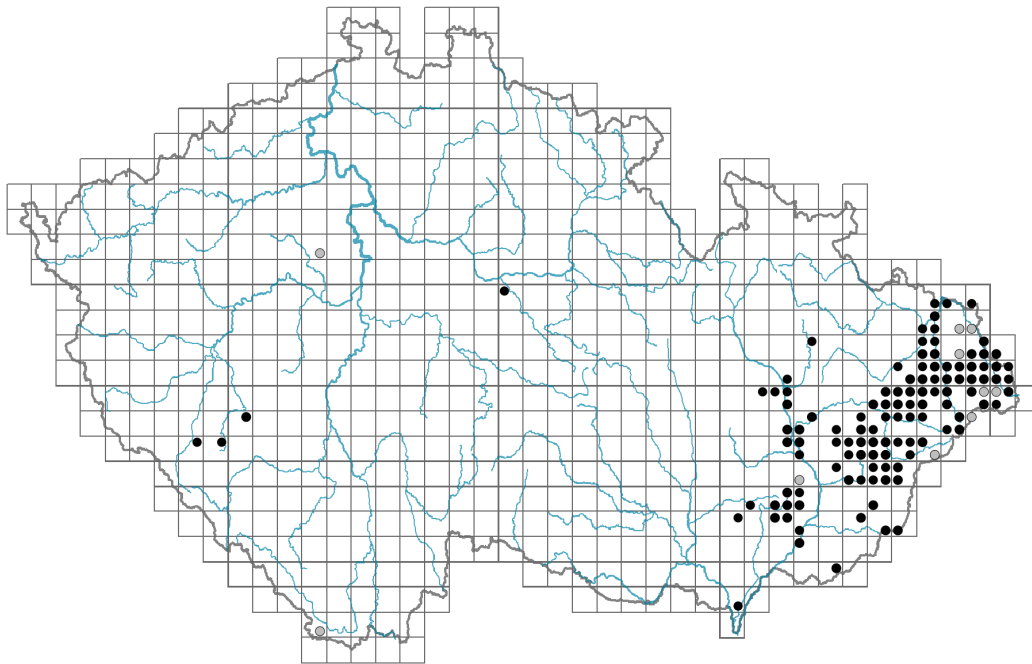


Euphorbia stricta

Distribution



© Radim Cílek

Map info

● revised records

○ unrevised records

On the map are not visualized records without the coordinates and records marked as incorrect or doubtful.

Habitus and growth type

Height [m]: **0.3-0.6**

Growth form: **annual herb**

Life form: **therophyte**

Life strategy: **R - ruderal**

Life strategy (Pierce method based on leaf traits): **R/SR**

Life strategy (Pierce method, C-score): **8.3 %**

Life strategy (Pierce method, S-score): **31.6 %**

Life strategy (Pierce method, R-score): **60.2 %**

Leaf

Leaf presence and metamorphosis: **leaves present, not modified**

Leaf arrangement (phyllotaxis): **alternate**

Leaf shape: **simple - entire**

Stipules: **absent**

Petiole: **absent**

Leaf anatomy: **mesomorphic**

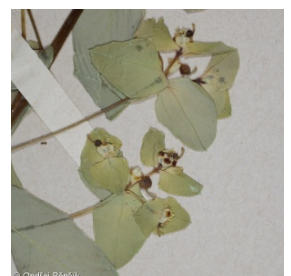
Flower

Flowering period [month]: **June-August**

Flowering phase: **5 Sorbus aucuparia-Galium odoratum (end of mid-spring)**



© Ondřej Pěnčík



© Ondřej Pěnčík



© Ondřej Pěnčík

Flower colour: **green**
 Perianth type: **flower achlamydeous**
 Inflorescence type: **pseudumbrella e cyathiis composita**
 Dicliny: **synoecious**
 Pollination syndrome: **insect-pollination**

Fruit, seed and dispersal

Fruit type: **dry fruit - capsule**
 Reproduction type: **only by seed/spores**
 Dispersal unit (diaspore): **seed**
 Dispersal strategy: **Allium (mainly autochory)**
 Myrmecochory: **myrmecochorous**

Belowground organs and clonality

Shoot life span (cyclicality): **monocyclic shoots prevailing**
 Primary root: **present**

Bud bank

Number of buds per shoot at the soil surface (root buds excluded): **5**
 Number of buds per shoot at a depth of 0–10 cm (root buds excluded): **0**
 Number of buds per shoot at a depth greater than 10 cm (root buds excluded): **0**
 Size of the belowground bud bank (root buds excluded): **5**
 Depth of the belowground bud bank (root buds excluded) [cm]: **1**
 Number of buds per shoot at the soil surface (root buds included): **5**
 Number of buds per shoot at a depth of 0–10 cm (root buds included): **0**
 Number of buds per shoot at a depth greater than 10 cm (root buds included): **0**
 Size of the belowground bud bank (root buds included): **5**
 Depth of the belowground bud bank (root buds included) [cm]: **1**

Trophic mode

Parasitism and mycoheterotrophy: **autotrophic**
 Carnivory: **non-carnivorous**
 Symbiotic nitrogen fixation: **no nitrogen-fixing symbionts**

Taxon origin

Origin in the Czech Republic: **native**

Ecological indicator values

Ellenberg-type indicator values

Light indicator value: **6 - transition between values 5 and 7; rarely at less than 20% of diffuse radiation incident in an open area**
 Temperature indicator value: **5 - moderate heat indicator, occurring from lowland to montane belt, mainly in submontane-temperate areas**
 Moisture indicator value: **6 - transition between values 5 and 7**
 Reaction indicator value: **6 - transition between values 5 and 7**



Nutrient indicator value: **6 - transition between values 5 and 7**

Salinity indicator value: **0 - not salt tolerant, glycophyte**

Habitat and sociology

Occurrence in habitats

4 Wetland and riverine herbaceous vegetation

4D Riverine reed vegetation: **1 - rare occurrence**

4I Vegetation of nitrophilous annual hygrophilous herbs: **1 - rare occurrence**

4J River gravel banks: **2 - optimum**

4K Petasites fringes of montane brooks: **2 - optimum**

4L Nitrophilous herbaceous fringes of lowland rivers: **1 - rare occurrence**

6 Meadows and mesic pastures

6A Mesic Arrhenatherum meadows: **1 - rare occurrence**

6C Pastures and park grasslands: **2 - optimum**

6D Alluvial meadows of lowland rivers: **1 - rare occurrence**

6E Wet Cirsium meadows: **1 - rare occurrence**

6F Intermittently wet Molinia meadows: **1 - rare occurrence**

6G Vegetation of wet disturbed soils: **1 - rare occurrence**

7 Acidophilous grasslands

7B Submontane Nardus grasslands: **1 - rare occurrence**

13 Anthropogenic vegetation

13A Annual vegetation of ruderal habitats: **1 - rare occurrence**

13C Annual vegetation of trampled habitats: **1 - rare occurrence**

13D Perennial thermophilous ruderal vegetation: **2 - optimum**

13E Perennial nitrophilous herbaceous vegetation of mesic sites: **1 - rare occurrence**

13F Herbaceous vegetation of forests clearings and Rubus scrub: **1 - rare occurrence**

Affinity to the forest environment

Affinity to the forest environment in Thermophyticum: **0 - taxon that does not spontaneously occur in Czech forests**

Affinity to the forest environment in Mesophyticum and Oreophyticum: **0 - taxon that does not spontaneously occur in Czech forests**

Ecological specialization indices

Ecological specialization index for all vegetation types: **3.6**

Ecological specialization index for non-forest vegetation: **3.8**

Colonization ability

Index of colonization success (ICS): **3**

Index of colonization potential (ICP): **8**

Optimum successional age [years]: **5**

Distribution and frequency

Floristic zone: **northern temperate, southern temperate, submeridional**

Floristic region: **Europe**

Distribution range extension along the continentality gradient: **6**

Elevational belt in the Czech Republic: **colline belt (lowlands, submontane belt)**

Occurrence frequency in the basic grid mapping cells and quadrants of the basic grid

mapping cells: 100

taxon.data.freq_in_quad: 166

Commonness in vegetation plots from the Czech Republic

Occurrence frequency in vegetation plots: **0.1 %**

Occurrence frequency in vegetation plots with a cover above 5%: **6.3 %**

Occurrence frequency in vegetation plots with a cover above 25%: **0 %**

Occurrence frequency in vegetation plots with a cover above 50%: **0 %**

Mean percentage cover in vegetation plots: **3.1 %**

Maximum percentage cover in vegetation plots: **13 %**

Number of habitats with taxon occurrence in the Czech Republic

Number of narrow habitats in which the taxon occurs: **17**

Number of narrow habitats in which the taxon has its optimum: **4**

Number of broad habitats in which the taxon occurs: **4**

Number of broad habitats in which the taxon has its optimum: **3**

Threats and protection

Red List 2017 (national categories): **C3 - vulnerable taxon**

Red List 2017 (IUCN categories): **NT - near threatened**

Legal protection: **not protected by law**