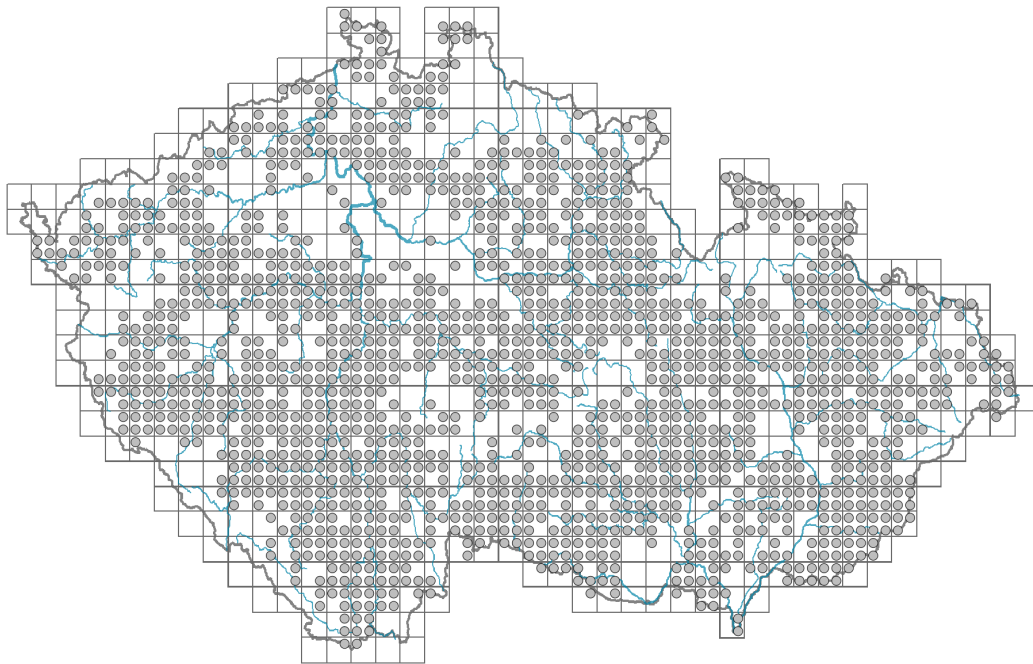


Genista tinctoria

Distribution



© Pavel Veselý

Map info

● revised records

○ unrevised records

On the map are not visualized records without the coordinates and records marked as incorrect or doubtful.

Habitus and growth type

Height [m]: **0.3-1**

Growth form: **dwarf shrub**

Life form: **chamaephyte (nanophanerophyte)**

Life strategy: **CS - competitor/stress-tolerator**

Life strategy (Pierce method based on leaf traits): **SR**

Life strategy (Pierce method, C-score): **9.3 %**

Life strategy (Pierce method, S-score): **52.4 %**

Life strategy (Pierce method, R-score): **38.3 %**

Leaf

Leaf presence and metamorphosis: **leaves present, not modified**

Leaf arrangement (phyllotaxis): **alternate**

Leaf shape: **simple - entire**

Stipules: **present**

Petiole: **absent**

Leaf life span: **summer green**

Leaf deciduousness in woody plants: **winter deciduous**

Leaf anatomy: **mesomorphic**

Functional leaf type in woody plants: **broad deciduous or semi-deciduous**



© Pavel Veselý



© Pavel Veselý

Flower

Flowering period [month]: **June-August**

Flowering phase: **7 Ligustrum vulgare-Stachys sylvatica (end of early summer)**

Flower colour: **yellow**

Flower symmetry: **zygomorphic**

Perianth type: **calyx and corolla**

Perianth fusion: **free**

Calyx fusion: **synsepalous**

Inflorescence type: **racemus**

Dicliny: **synoecious**

Generative reproduction type: **allogamy self-incompatibility**

Pollination syndrome: **insect-pollination**



Fruit, seed and dispersal

Fruit type: **dry fruit - legume**

Fruit colour: **brown**

Reproduction type: **only by seed/spores**

Dispersal unit (diaspore): **seed**

Dispersal strategy: **Allium (mainly autochory)**

Myrmecochory: **myrmecochorous**

Belowground organs and clonality

Shoot life span (cyclicity): **monocyclic shoots prevailing**

Branching type of stem-derived organs of clonal growth: **sympodial**

Primary root: **present**

Bud bank

Number of buds per shoot at the soil surface (root buds excluded): **6**

Number of buds per shoot at a depth of 0-10 cm (root buds excluded): **10**

Number of buds per shoot at a depth greater than 10 cm (root buds excluded): **0**

Size of the belowground bud bank (root buds excluded): **16**

Depth of the belowground bud bank (root buds excluded) [cm]: **3**

Number of buds per shoot at the soil surface (root buds included): **6**

Number of buds per shoot at a depth of 0-10 cm (root buds included): **10**

Number of buds per shoot at a depth greater than 10 cm (root buds included): **0**

Size of the belowground bud bank (root buds included): **16**

Depth of the belowground bud bank (root buds included) [cm]: **3**

Trophic mode

Parasitism and mycoheterotrophy: **autotrophic**

Carnivory: **non-carnivorous**

Symbiotic nitrogen fixation: **symbiosis with rhizobia**

Karyology

Chromosome number (2n): **96 (48)**

Ploidy level (x): **8 (4)**

2C genome size [Mbp]: **3286.05**

1Cx monoploid genome size [Mbp]: **410.76**

Genomic GC content: **38.6 %**

Taxon origin

Origin in the Czech Republic: **native**

Ecological indicator values

Ellenberg-type indicator values

Light indicator value: **7 - half-light plant, mostly occurring at full light, but also in the shade up to about 30% of diffuse radiation incident in an open area**

Temperature indicator value: **6 - transition between values 5 and 7**

Moisture indicator value: **4 - transition between values 3 and 5**

Reaction indicator value: **6 - transition between values 5 and 7**

Nutrient indicator value: **3 - occurring at nutrient-poor sites more frequently than at average sites and exceptionally at rich sites**

Salinity indicator value: **0 - not salt tolerant, glycophyte**

Indicator values for disturbance

Whole-community disturbance frequency indicator value: **-1.66**

Herb layer disturbance frequency indicator value: **-0.52**

Whole-community disturbance severity indicator value: **0.23**

Herb layer disturbance severity indicator value: **0.17**

Whole-community structure based disturbance indicator value: **0.21**

Herb layer structure-based disturbance indicator value: **0.31**

Habitat and sociology

Occurrence in habitats

1 Vegetation of cliffs, screes and walls

1B Siliceous cliffs and block fields: **1 - rare occurrence**

6 Meadows and mesic pastures

6A Mesic Arrhenatherum meadows: **1 - rare occurrence**

6C Pastures and park grasslands: **1 - rare occurrence**

6F Intermittently wet Molinia meadows: **1 - rare occurrence**

7 Acidophilous grasslands

7B Submontane Nardus grasslands: **2 - optimum**

8 Dry grasslands

8A Hercynian dry grasslands on rock outcrops: **1 - rare occurrence**

8B Submediterranean dry grasslands on rock outcrops: **1 - rare occurrence**

8C Narrow-leaved sub-continental steppes: **1 - rare occurrence**

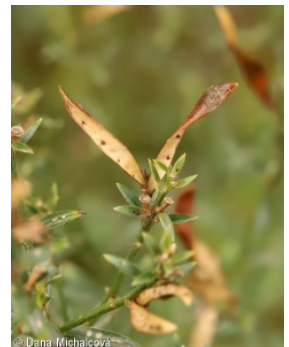
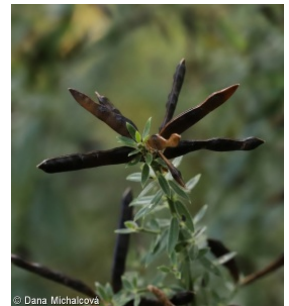
8D Broad-leaved dry grasslands: **2 - optimum**

8E Acidophilous dry grasslands: **2 - optimum**

8F Thermophilous forest fringe vegetation: **2 - optimum**

9 Sand grasslands and rock-outcrop vegetation

9E Acidophilous vegetation of spring therophytes and succulents: **1 - rare occurrence**



9F Basiphilous vegetation of spring therophytes and succulents: **1 - rare occurrence**

11 Heathlands and scrub

11A Dry lowland to subalpine heathlands: **2 - optimum**

11L Tall mesic and xeric shrub: **1 - rare occurrence**

11N Low xeric scrub: **1 - rare occurrence**

12 Forests

12C Oak-hornbeam forests: **1 - rare occurrence**

12D Ravine forests: **1 - rare occurrence**

12F Limestone beech forests: **1 - rare occurrence**

12H Peri-Alpidic basiphilous thermophilous oak forests: **2 - optimum**

12I Sub-continental thermophilous oak forests: **2 - optimum**

12J Acidophilous thermophilous oak forests: **2 - optimum**

12K Acidophilous oak forests: **2 - optimum**

12L Boreo-continental pine forests: **2 - optimum**

12O Peri-Alpidic pine forests: **2 - optimum**

12W Pine and larch plantations: **1 - rare occurrence**

13 Anthropogenic vegetation

13F Herbaceous vegetation of forests clearings and Rubus scrub: **1 - rare occurrence**

Affinity to the forest environment

Affinity to the forest environment in Thermophyticum: **2.1 - taxon occurring both in the forest and open vegetation**

Affinity to the forest environment in Mesophyticum and Oreophyticum: **2.1 - taxon occurring both in the forest and open vegetation**

Diagnostic taxon

Diagnostic taxon of classes: [LC Quercetea pubescentis](#)

Diagnostic taxon of alliances: [LCB Aceri tatarici-Quercion](#), [LCC Quercion petraeae](#)

Diagnostic taxon of associations: [LCA02 Lithospermo purpureo-caerulei-Quercetum pubescentis](#), [LCB02 Carici fritschii-Quercetum roboris](#), [LCC01 Sorbo torminalis-Quercetum](#), [LDA02 Viscario vulgaris-Quercetum petraeae](#), [THF02 Brachypodio pinnati-Molinietum arundinaceae](#)

Constant taxon

Constant taxon of associations: [LCB02 Carici fritschii-Quercetum roboris](#), [LCC01 Sorbo torminalis-Quercetum](#), [LDA02 Viscario vulgaris-Quercetum petraeae](#), [THF02 Brachypodio pinnati-Molinietum arundinaceae](#)

Ecological specialization indices

Ecological specialization index for all vegetation types: **4.3**

Ecological specialization index for non-forest vegetation: **4.7**

Ecological specialization index for forest vegetation: **5**

Colonization ability

Index of colonization success (ICS): **6**

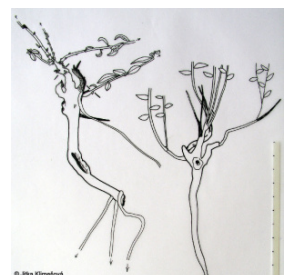
Index of colonization potential (ICP): **4**

Optimum successional age [years]: **13**

Distribution and frequency

Floristic zone: **northern temperate, southern temperate, submeridional**

Floristic region: **Europe, Western Siberia**



Continentality degree: **5**

Distribution range extension along the continentality gradient: **4**

Elevational belt in the Czech Republic: **lowlands, colline belt, submontane belt**

Occurrence frequency in the basic grid mapping cells and quadrants of the basic grid mapping cells: **556**

taxon.data.freq_in_quad: **1579**

Commonness in vegetation plots from the Czech Republic

Occurrence frequency in vegetation plots: **1.3 %**

Occurrence frequency in vegetation plots with a cover above 5%: **5.7 %**

Occurrence frequency in vegetation plots with a cover above 25%: **0.2 %**

Occurrence frequency in vegetation plots with a cover above 50%: **0 %**

Mean percentage cover in vegetation plots: **2.8 %**

Maximum percentage cover in vegetation plots: **38 %**

Number of habitats with taxon occurrence in the Czech Republic

Number of narrow habitats in which the taxon occurs: **27**

Number of narrow habitats in which the taxon has its optimum: **11**

Number of broad habitats in which the taxon occurs: **8**

Number of broad habitats in which the taxon has its optimum: **4**



Threats and protection

Red List 2017 (national categories): **taxon is not on the Red List**

Red List 2017 (IUCN categories): **LC(NA) - least concern (taxon is not on the Red List)**

Legal protection: **not protected by law**