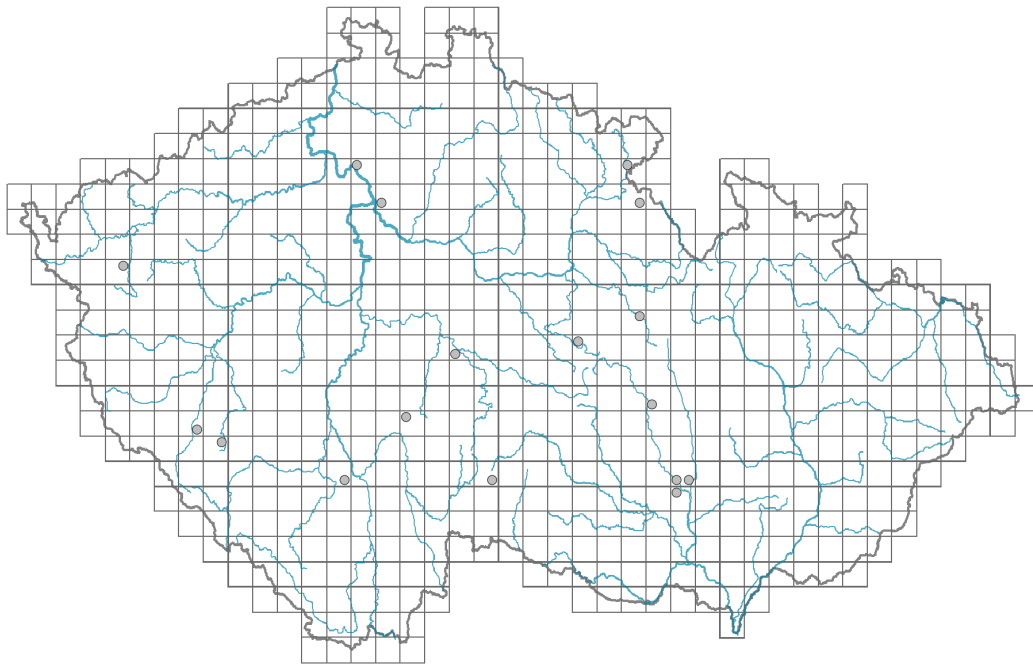


Hemerocallis lilioasphodelus

Distribution



© Dana Michalčová

Map info

● revised records

○ unrevised records

On the map are not visualized records without the coordinates and records marked as incorrect or doubtful.



© Dana Michalčová



© Dana Michalčová



© Dana Hplubová

Habitus and growth type

Height [m]: **0.5**

Growth form: **clonal herb**

Life form: **geophyte**

Life strategy: **C - competitor**

Leaf

Leaf presence and metamorphosis: **leaves present, not modified**

Leaf arrangement (phyllotaxis): **rosulate**

Leaf shape: **simple - entire**

Stipules: **absent**

Petiole: **absent**

Leaf life span: **summer green**

Flower

Flowering period [month]: **June**

Flower colour: **yellow**

Flower symmetry: **actinomorphic**

Perianth type: **homochlamydeous**

Perianth fusion: **fused**

Shape of the sympetalous corolla or syntepalous perianth: **funnel-shaped**

Inflorescence type: **bostryx**
Dicliny: **synoecious**
Generative reproduction type: **alogamy self-incompatibility**
Pollination syndrome: **insect-pollination**

Fruit, seed and dispersal

Fruit type: **dry fruit - capsule**
Fruit colour: **brown**
Reproduction type: **only vegetatively**
Dispersal strategy: **Zea (no dispersal)**
Myrmecochory: **myrmecochorous nv**

Belowground organs and clonality

Shoot metamorphosis: **rhizome**
Root metamorphosis: **secondary storage root**
Storage organ: **rhizome, secondary storage root**
Type of clonal growth organ: **epigeogenous rhizome**
Freely dispersible organs of clonal growth: **absent**
Shoot life span (cyclicity): **dicyclic or polycyclic shoots prevailing**
Branching type of stem-derived organs of clonal growth: **sympodial**
Primary root: **absent**
Persistence of the clonal growth organ [year]:
Number of clonal offspring:
Lateral spreading distance by clonal growth [m]: **0.01**
Clonal index: **4**

Bud bank

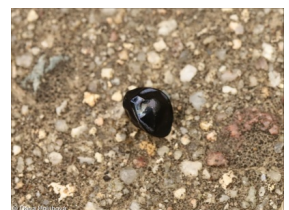
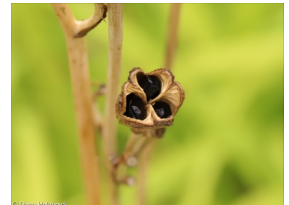
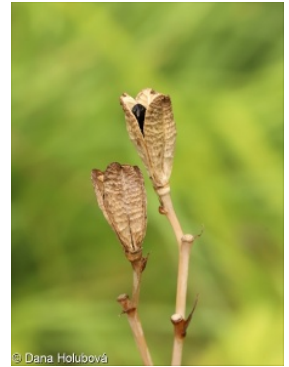
Number of buds per shoot at the soil surface (root buds excluded):
Number of buds per shoot at a depth of 0–10 cm (root buds excluded):
Number of buds per shoot at a depth greater than 10 cm (root buds excluded):
Size of the belowground bud bank (root buds excluded):
Depth of the belowground bud bank (root buds excluded) [cm]:
Number of buds per shoot at the soil surface (root buds included):
Number of buds per shoot at a depth of 0–10 cm (root buds included):
Number of buds per shoot at a depth greater than 10 cm (root buds included):
Size of the belowground bud bank (root buds included):
Depth of the belowground bud bank (root buds included) [cm]:

Trophic mode

Parasitism and mycoheterotrophy: **autotrophic**
Carnivory: **non-carnivorous**
Symbiotic nitrogen fixation: **no nitrogen-fixing symbionts**

Taxon origin

Origin in the Czech Republic: **neophyte**
Invasion status: **casual**



Geographic origin: **Asia**

Year of the first record in the wild: **1883**

Period of introduction: **Late Modern Period (1800-1950)**

Introduction pathway: **intentional - ornamental**

Habitat and sociology

Affinity to the forest environment

Affinity to the forest environment in Thermophyticum: **0 - taxon that does not spontaneously occur in Czech forests**

Affinity to the forest environment in Mesophyticum and Oreophyticum: **0 - taxon that does not spontaneously occur in Czech forests**

Distribution and frequency

Floristic zone: **northern temperate, southern temperate, submeridional**

Floristic region: **Europe, Asia, Siberia**

Occurrence frequency in the basic grid mapping cells and quadrants of the basic grid mapping cells: 16

taxon.data.freq_in_quad: 17

Threats and protection

Red List 2017 (national categories): **taxon is not on the Red List**

Red List 2017 (IUCN categories): **LC(NA) - least concern (taxon is not on the Red List)**

Legal protection: **not protected by law**