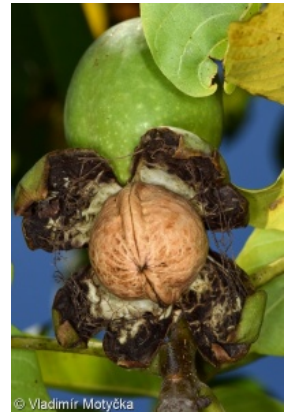
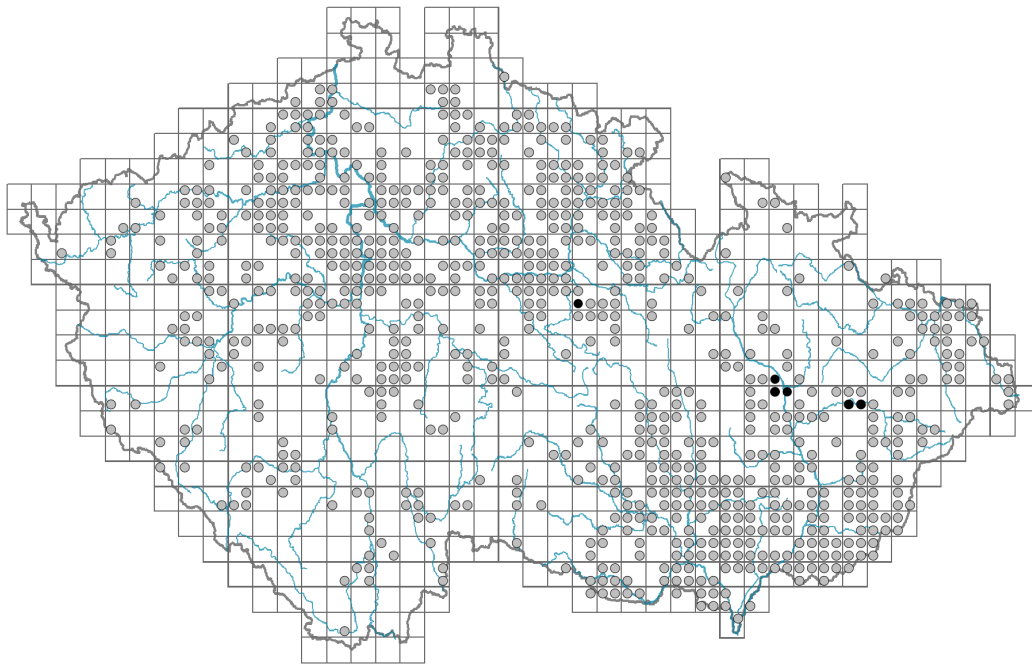


Juglans regia

Distribution



© Vladimír Motýčka

Map info

● revised records

○ unrevised records

On the map are not visualized records without the coordinates and records marked as incorrect or doubtful.

Habitus and growth type

Height [m]:

Growth form: **tree**

Life form: **macrophanerophyte**

Life strategy: **C - competitor**

Life strategy (Pierce method based on leaf traits): **C/CSR**

Life strategy (Pierce method, C-score): **52.4 %**

Life strategy (Pierce method, S-score): **31.3 %**

Life strategy (Pierce method, R-score): **16.3 %**



© Vladimír Motýčka

Leaf

Leaf presence and metamorphosis: **leaves present, not modified**

Leaf arrangement (phyllotaxis): **alternate**

Leaf shape: **compound - imparipinnate**

Stipules: **absent**

Petiole: **present**

Leaf life span: **summer green**

Leaf deciduousness in woody plants: **winter deciduous**

Leaf anatomy: **mesomorphic**

Functional leaf type in woody plants: **broad deciduous or semi-deciduous**



© Petr Voborník



© Vladimír Motýčka

Flower

Flowering period [month]: **April-May**

Flowering phase: **5 Sorbus aucuparia-Galium odoratum (end of mid-spring)**

Flower colour: **green**

Perianth type: **reduced**

Perianth fusion: **reduced**

Inflorescence type: **amentum e floribus masculis, spica e floribus femineis composita**

Dicliny: **monoecious**

Generative reproduction type: **facultative allogamy**

Pollination syndrome: **wind-pollination**



Fruit, seed and dispersal

Fruit type: **fleshy fruit - drupe**

Fruit colour: **brown**

Reproduction type: **only by seed/spores**

Dispersal unit (diaspore): **seed, fruit, infructescence or its part**

Dispersal strategy: **Cornus (mainly autochory and endozoochory)**

Myrmecochory: **non-myrmecochorous (b)**

Belowground organs and clonality

Position of root buds: **lateral roots**

Role of root buds in life-history of a plant: **regenerative**

Bud bank

Number of buds per shoot at the soil surface (root buds excluded):

Number of buds per shoot at a depth of 0–10 cm (root buds excluded):

Number of buds per shoot at a depth greater than 10 cm (root buds excluded):

Size of the belowground bud bank (root buds excluded):

Number of buds per shoot at the soil surface (root buds included):

Number of buds per shoot at a depth of 0–10 cm (root buds included):

Number of buds per shoot at a depth greater than 10 cm (root buds included):

Size of the belowground bud bank (root buds included):

Depth of the belowground bud bank (root buds included) [cm]:

Trophic mode

Parasitism and mycoheterotrophy: **autotrophic**

Carnivory: **non-carnivorous**

Symbiotic nitrogen fixation: **no nitrogen-fixing symbionts**

Karyology

Chromosome number (2n): **32**

Ploidy level (x): **2**

2C genome size [Mbp]: **1108.42**

1Cx monoploid genome size [Mbp]: **554.21**

Genomic GC content: **39.2 %**

Taxon origin

Origin in the Czech Republic: **archaeophyte**

Invasion status: **invasive**

Geographic origin: **Mediterranean**

Period of introduction: **Early Middle Ages (550-1200)**

Introduction pathway: **intentional - crops**



Ecological indicator values

Ellenberg-type indicator values

Light indicator value: **6 - transition between values 5 and 7; rarely at less than 20% of diffuse radiation incident in an open area**

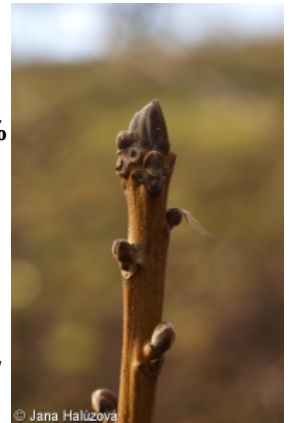
Temperature indicator value: **7 - heat indicator, occurring in relatively warm lowlands**

Moisture indicator value: **5 - indicator of fresh soils, focus on soils of average moisture, missing on wet and on soils that frequently dry out**

Reaction indicator value: **7 - indicator of slightly acidic to slightly basic conditions, never occurring in very acidic conditions**

Nutrient indicator value: **7 - occurring at nutrient-rich sites more often than at average sites and only exceptionally at poor sites**

Salinity indicator value: **0 - not salt tolerant, glycophyte**



Habitat and sociology

Occurrence in habitats

6 Meadows and mesic pastures

6A Mesic Arrhenatherum meadows: **1 - rare occurrence**

11 Heathlands and scrub

11L Tall mesic and xeric shrub: **1 - rare occurrence**

11R Scrub and pioneer woodland of forests clearings: **1 - rare occurrence**

12 Forests

12C Oak-hornbeam forests: **2 - optimum**

12H Peri-Alpidic basiphilous thermophilous oak forests: **2 - optimum**

12U Plantations of broad-leaved non-native trees: **2 - optimum**

13 Anthropogenic vegetation

13D Perennial thermophilous ruderal vegetation: **1 - rare occurrence**

Affinity to the forest environment

Affinity to the forest environment in Thermophyticum: **2.2 - taxon occurring partly in the forest, but mainly in open vegetation**

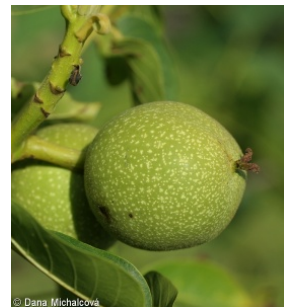
Affinity to the forest environment in Mesophyticum and Oreophyticum: **2.2 - taxon occurring partly in the forest, but mainly in open vegetation**

Ecological specialization indices

Ecological specialization index for all vegetation types: **4**

Ecological specialization index for non-forest vegetation: **3.4**

Ecological specialization index for forest vegetation: **4.8**



Colonization ability

Index of colonization success (ICS): **4**

Index of colonization potential (ICP): **9**

Optimum successional age [years]: **35**

Distribution and frequency

Floristic zone: **submeridional, meridional**

Floristic region: **Europe, Western Asia**

Continentality degree: **5**

Distribution range extension along the continentality gradient: **3**

Elevational belt in the Czech Republic: **lowlands, colline belt, submontane belt**

Occurrence frequency in the basic grid mapping cells and quadrants of the basic grid mapping cells: **387**

taxon.data.freq_in_quad: **793**

Commonness in vegetation plots from the Czech Republic

Occurrence frequency in vegetation plots: **0 %**

Occurrence frequency in vegetation plots with a cover above 5%: **22.2 %**

Occurrence frequency in vegetation plots with a cover above 25%: **0 %**

Occurrence frequency in vegetation plots with a cover above 50%: **0 %**

Mean percentage cover in vegetation plots: **5 %**

Maximum percentage cover in vegetation plots: **18 %**

Number of habitats with taxon occurrence in the Czech Republic

Number of narrow habitats in which the taxon occurs: **7**

Number of narrow habitats in which the taxon has its optimum: **3**

Number of broad habitats in which the taxon occurs: **4**

Number of broad habitats in which the taxon has its optimum: **1**

Threats and protection

Red List 2017 (national categories): **taxon is not on the Red List**

Red List 2017 (IUCN categories): **LC(NA) - least concern (taxon is not on the Red List)**

Legal protection: **not protected by law**

