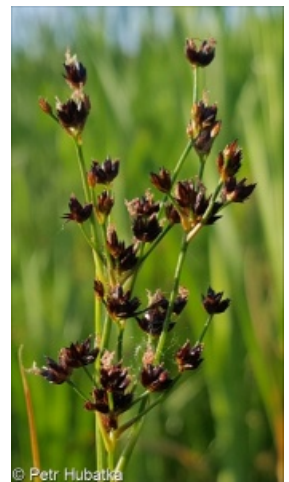
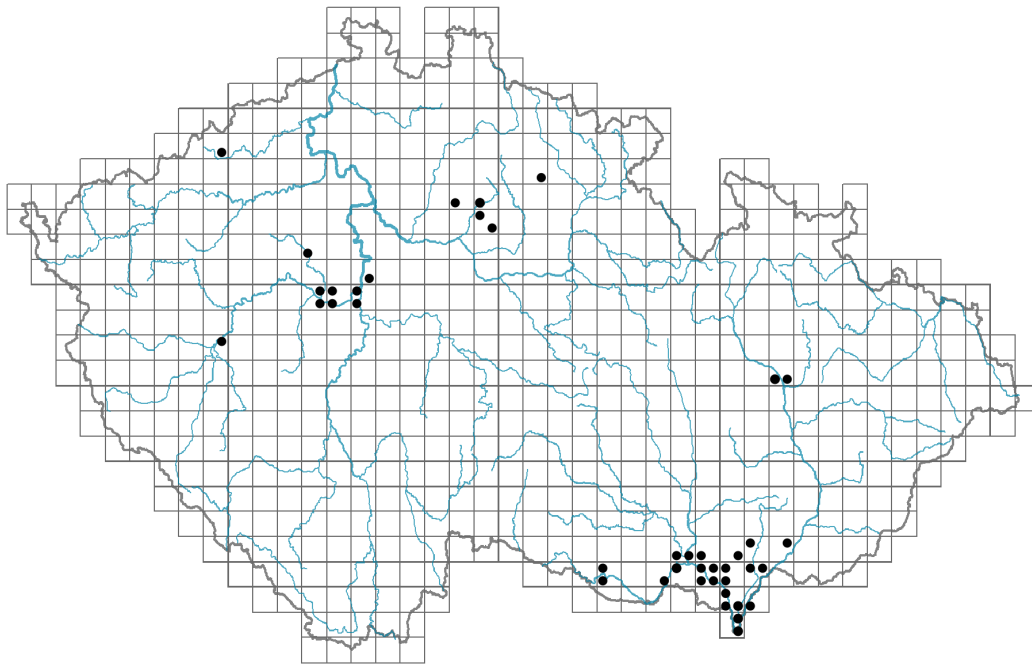


# *Juncus atratus*

## Distribution



© Petr Hubátka

### Map info

● revised records

○ unrevised records

On the map are not visualized records without the coordinates and records marked as incorrect or doubtful.

## Habitus and growth type

Height [m]: **0.3-1**

Growth form: **clonal herb**

Life form: **hemicryptophyte**

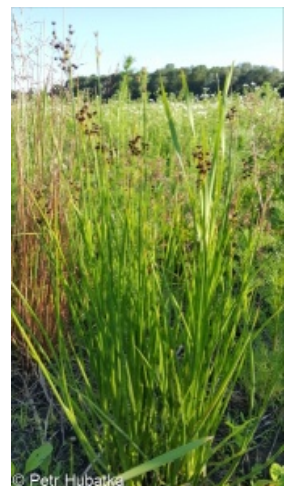
Life strategy: **CS - competitor/stress-tolerator**

Life strategy (Pierce method based on leaf traits): **S/CS**

Life strategy (Pierce method, C-score): **33.5 %**

Life strategy (Pierce method, S-score): **58.9 %**

Life strategy (Pierce method, R-score): **7.6 %**



© Petr Hubátka

## Leaf

Leaf presence and metamorphosis: **leaves present, not modified**

Leaf arrangement (phyllotaxis): **alternate**

Leaf shape: **simple - entire**

Stipules: **absent**

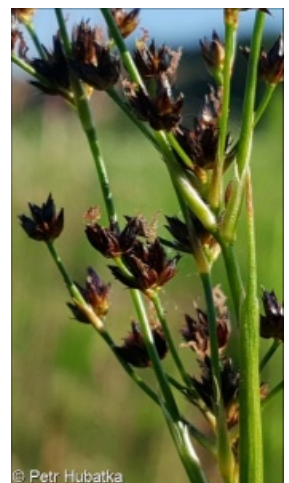
Petiole: **absent**

Leaf life span: **evergreen**

Leaf anatomy: **helomorphic**

## Flower

Flowering period [month]: **July-September**



© Petr Hubátka

Flower colour: **black**  
 Flower symmetry: **actinomorphic**  
 Perianth type: **homochlamydeous**  
 Perianth fusion: **free**  
 Inflorescence type: **anthella**  
 Dicliny: **synoecious**  
 Generative reproduction type: **mixed mating**  
 Pollination syndrome: **wind-pollination**

### Fruit, seed and dispersal

Fruit type: **dry fruit - capsule**  
 Reproduction type: **by seed/spores and vegetatively**  
 Dispersal unit (diaspore): **seed**  
 Dispersal strategy: **Sparganium (mainly autochory and hydrochory)**  
 Myrmecochory: **probably non-myrmecochorous**

### Belowground organs and clonality

Shoot metamorphosis: **rhizome**  
 Storage organ: **rhizome**  
 Type of clonal growth organ: **hypogeogenous rhizome**  
 Freely dispersible organs of clonal growth: **absent**  
 Shoot life span (cyclicality): **monocyclic shoots prevailing**  
 Branching type of stem-derived organs of clonal growth: **sympodial**  
 Primary root: **absent**  
 Persistence of the clonal growth organ [year]: **4**  
 Number of clonal offspring: **3.5**  
 Lateral spreading distance by clonal growth [m]: **0.13**  
 Clonal index: **5**

### Bud bank

Number of buds per shoot at the soil surface (root buds excluded): **5**  
 Number of buds per shoot at a depth of 0–10 cm (root buds excluded): **15**  
 Number of buds per shoot at a depth greater than 10 cm (root buds excluded): **0**  
 Size of the belowground bud bank (root buds excluded): **20**  
 Depth of the belowground bud bank (root buds excluded) [cm]: **4**  
 Number of buds per shoot at the soil surface (root buds included): **5**  
 Number of buds per shoot at a depth of 0–10 cm (root buds included): **15**  
 Number of buds per shoot at a depth greater than 10 cm (root buds included): **0**  
 Size of the belowground bud bank (root buds included): **20**  
 Depth of the belowground bud bank (root buds included) [cm]: **4**

### Trophic mode

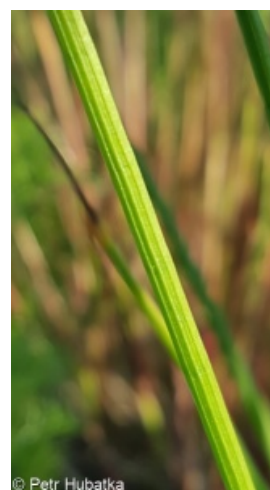
Parasitism and mycoheterotrophy: **autotrophic**  
 Carnivory: **non-carnivorous**  
 Symbiotic nitrogen fixation: **no nitrogen-fixing symbionts**



© Daniela Šártová Dřítrichová



© Dana Wenzelová



© Petr Hubatka

## Karyology

Chromosome number (2n): **40**

Ploidy level (x): **2**

2C genome size [Mbp]: **1800.45**

1Cx monoploid genome size [Mbp]: **900.23**

Genomic GC content: **35.5 %**

## Taxon origin

Origin in the Czech Republic: **native**

## Ecological indicator values

Ellenberg-type indicator values

Light indicator value: **8 - light plant, only exceptionally occurring at less than 40% of diffuse radiation incident in an open area**

Temperature indicator value: **7 - heat indicator, occurring in relatively warm lowlands**

Moisture indicator value: **9 - wetness indicator, focus on often soaked, poorly aerated soils**

Reaction indicator value: **7 - indicator of slightly acidic to slightly basic conditions, never occurring in very acidic conditions**

Nutrient indicator value: **4 - transition between values 3 and 5**

Salinity indicator value: **0 - not salt tolerant, glycophyte**

## Habitat and sociology

Occurrence in habitats

5 Vegetation of springs and mires

5D Calcareous fens: **1 - rare occurrence**

6 Meadows and mesic pastures

6D Alluvial meadows of lowland rivers: **1 - rare occurrence**

Affinity to the forest environment

Affinity to the forest environment in Thermophyticum: **0 - taxon that does not spontaneously occur in Czech forests**

Affinity to the forest environment in Mesophyticum and Oreophyticum: **0 - taxon that does not spontaneously occur in Czech forests**

Colonization ability

Index of colonization success (ICS): **2**

Index of colonization potential (ICP): **8**

Optimum successional age [years]: **4**

## Distribution and frequency

Floristic zone: **northern temperate, southern temperate, submeridional, meridional**

Floristic region: **Europe, Western Siberia**

Continental degree: **8**

Distribution range extension along the continentality gradient: **5**

Elevational belt in the Czech Republic: **lowlands, colline belt**

Occurrence frequency in the basic grid mapping cells and quadrants of the basic grid mapping cells: 30

taxon.data.freq\_in\_quad: 47

Commonness in vegetation plots from the Czech Republic

Occurrence frequency in vegetation plots: **0 %**

Occurrence frequency in vegetation plots with a cover above 5%: **50 %**

Occurrence frequency in vegetation plots with a cover above 25%: **25 %**

Occurrence frequency in vegetation plots with a cover above 50%: **25 %**

Mean percentage cover in vegetation plots: **20.3 %**

Maximum percentage cover in vegetation plots: **63 %**

Number of habitats with taxon occurrence in the Czech Republic

Number of narrow habitats in which the taxon occurs: **2**

Number of narrow habitats in which the taxon has its optimum: **0**

Number of broad habitats in which the taxon occurs: **2**

Number of broad habitats in which the taxon has its optimum: **0**

### **Threats and protection**

Red List 2017 (national categories): **C1b - critically threatened taxon, rare and declining**

Red List 2017 (IUCN categories): **CR - critically endangered**

Legal protection: **critically threatened taxon**