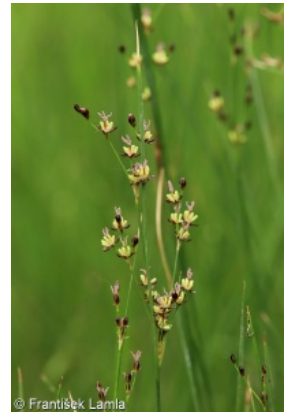
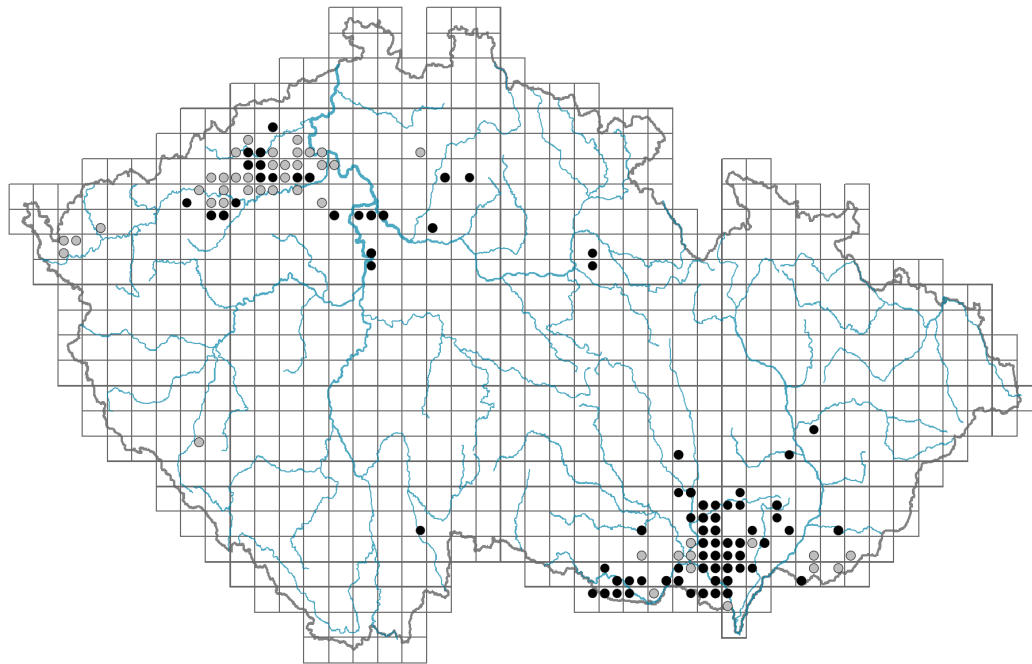


# *Juncus gerardii*

## Distribution



### Map info

● revised records

● unrevised records

On the map are not visualized records without the coordinates and records marked as incorrect or doubtful.

## Habitus and growth type

Height [m]: **0.15-0.5**

Growth form: **clonal herb**

Life form: **hemicryptophyte**

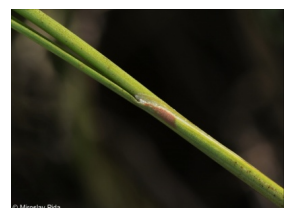
Life strategy: **S - stress-tolerator**

Life strategy (Pierce method based on leaf traits): **S/SR**

Life strategy (Pierce method, C-score): **8.9 %**

Life strategy (Pierce method, S-score): **68.9 %**

Life strategy (Pierce method, R-score): **22.1 %**



## Leaf

Leaf presence and metamorphosis: **leaves present, not modified**

Leaf arrangement (phyllotaxis): **alternate**

Leaf shape: **simple - entire**

Stipules: **absent**

Petiole: **absent**

Leaf life span: **summer green**

Leaf anatomy: **scleromorphic, helomorphic**

## Flower

Flowering period [month]: **June-July**

Flowering phase: **7 Ligustrum vulgare-Stachys sylvatica (end of early summer)**

Flower colour: **brown**

Flower symmetry: **actinomorphic**

Perianth type: **homochlamydeous**

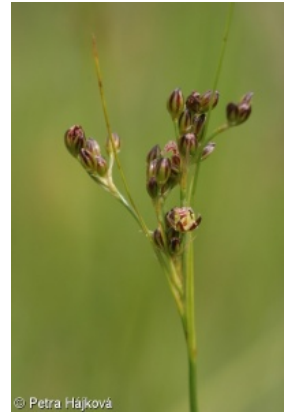
Perianth fusion: **free**

Inflorescence type: **anthella**

Dicliny: **synoecious**

Generative reproduction type: **mixed mating**

Pollination syndrome: **wind-pollination**



## Fruit, seed and dispersal

Fruit type: **dry fruit - capsule**

Reproduction type: **by seed/spores and vegetatively**

Dispersal unit (diaspore): **seed**

Dispersal strategy: **Allium (mainly autochory)**

Myrmecochory: **probably non-myrmecochorous**



## Belowground organs and clonality

Shoot metamorphosis: **rhizome**

Storage organ: **rhizome**

Type of clonal growth organ: **hypogeogenous rhizome**

Freely dispersible organs of clonal growth: **absent**

Shoot life span (cyclicity): **dicyclic or polycyclic shoots prevailing**

Branching type of stem-derived organs of clonal growth: **sympodial**

Primary root: **absent**

Persistence of the clonal growth organ [year]:

Number of clonal offspring: **4.3**

Lateral spreading distance by clonal growth [m]: **0.13**

Clonal index: **5**



## Bud bank

Number of buds per shoot at the soil surface (root buds excluded):

Number of buds per shoot at a depth of 0–10 cm (root buds excluded):

Number of buds per shoot at a depth greater than 10 cm (root buds excluded): **4**

Size of the belowground bud bank (root buds excluded): **24**

Depth of the belowground bud bank (root buds excluded) [cm]: **6**

Number of buds per shoot at the soil surface (root buds included):

Number of buds per shoot at a depth of 0–10 cm (root buds included):

Number of buds per shoot at a depth greater than 10 cm (root buds included): **4**

Size of the belowground bud bank (root buds included): **24**

Depth of the belowground bud bank (root buds included) [cm]: **6**

## Trophic mode

Parasitism and mycoheterotrophy: **autotrophic**

Carnivory: **non-carnivorous**

Symbiotic nitrogen fixation: **no nitrogen-fixing symbionts**

## Taxon origin

Origin in the Czech Republic: **native**

## Ecological indicator values

Ellenberg-type indicator values

Light indicator value: **8 - light plant, only exceptionally occurring at less than 40% of diffuse radiation incident in an open area**

Temperature indicator value: **6 - transition between values 5 and 7**

Moisture indicator value: **8 - transition between values 7 and 9**

Reaction indicator value: **8 - transition between values 7 and 9, occurring mostly in calcium-rich conditions**

Nutrient indicator value: **5x - occurring at moderately nutrient-rich sites, and less frequently at poor and rich sites (generalist)**

Salinity indicator value: **8 - euhaline, on soils with a very high salt content**

Indicator values for disturbance

Whole-community disturbance frequency indicator value: **-0.28**

Herb layer disturbance frequency indicator value: **-0.28**

Whole-community disturbance severity indicator value: **0.3**

Herb layer disturbance severity indicator value: **0.33**

Whole-community structure based disturbance indicator value: **0.59**

Herb layer structure-based disturbance indicator value: **0.66**

## Habitat and sociology

Occurrence in habitats

4 Wetland and riverine herbaceous vegetation

4B Halophilous reed and sedge beds: **2 - optimum**

4C Eutrophic vegetation of muddy substrata: **1 - rare occurrence**

6 Meadows and mesic pastures

6D Alluvial meadows of lowland rivers: **1 - rare occurrence**

6G Vegetation of wet disturbed soils: **1 - rare occurrence**

8 Dry grasslands

8D Broad-leaved dry grasslands: **1 - rare occurrence**

10 Saline vegetation

10G Continental vegetation of annual halophilous grasses: **1 - rare occurrence**

10H Inland vegetation of succulent halophytes: **2 - optimum**

10I Inland saline meadows: **2 - optimum**

10J Saline steppes: **2 - optimum**

Affinity to the forest environment

Affinity to the forest environment in Thermophyticum: **0 - taxon that does not spontaneously occur in Czech forests**

Affinity to the forest environment in Mesophyticum and Oreophyticum: **0 - taxon that does not spontaneously occur in Czech forests**

Diagnostic taxon

Diagnostic taxon of classes: [\*\*TB Thero-Salicornietea strictae\*\*](#), [\*\*TC Festuco-Puccinellietea\*\*](#)

Diagnostic taxon of alliances: [MCB Meliloto dentati-Bolboschoenion maritimi](#), [TBA Salicornion prostratae](#), [TCA Puccinellion limosae](#), [TCB Juncion gerardii](#)

Diagnostic taxon of associations: [MCB01 Astero pannonici-Bolboschoenetum compacti](#), [MCC04 Eleocharito palustris-Hippuridetum vulgaris](#), [TAA02 Heleochloëtum schoenoidis](#), [TBA01 Salicornietum prostratae](#), [TBA02 Spergulario marginatae-Suaedetum prostratae](#), [TCA01 Puccinellietum limosae](#), [TCB01 Scorzonero parviflorae-Juncetum gerardii](#), [TCB02 Loto tenuis-Potentilletum anserinae](#), [TCB03 Agrostio stoloniferae-Juncetum ranarii](#)

Constant taxon

Constant taxon of classes: [TC Festuco-Puccinellietea](#)

Constant taxon of alliances: [TCB Juncion gerardii](#)

Constant taxon of associations: [MCB01 Astero pannonici-Bolboschoenetum compacti](#), [TCB01 Scorzonero parviflorae-Juncetum gerardii](#)

Dominant taxon

Dominant taxon of associations: [TCB01 Scorzonero parviflorae-Juncetum gerardii](#)

Ecological specialization indices

Ecological specialization index for all vegetation types: **5.4**

Ecological specialization index for non-forest vegetation: **5.4**

## Distribution and frequency

Floristic zone: **boreal, northern temperate, southern temperate, submeridional, meridional**

Floristic region: **Europe, Asia, Americas**

Continentality degree: **8**

Distribution range extension along the continentality gradient: **7**

Elevational belt in the Czech Republic: **lowlands, colline belt**

Occurrence frequency in the basic grid mapping cells and quadrants of the basic grid mapping cells: **76**

taxon.data.freq\_in\_quad: **130**

Commonness in vegetation plots from the Czech Republic

Occurrence frequency in vegetation plots: **0.3 %**

Occurrence frequency in vegetation plots with a cover above 5%: **26.6 %**

Occurrence frequency in vegetation plots with a cover above 25%: **3.8 %**

Occurrence frequency in vegetation plots with a cover above 50%: **0 %**

Mean percentage cover in vegetation plots: **6 %**

Maximum percentage cover in vegetation plots: **38 %**

Number of habitats with taxon occurrence in the Czech Republic

Number of narrow habitats in which the taxon occurs: **9**

Number of narrow habitats in which the taxon has its optimum: **4**

Number of broad habitats in which the taxon occurs: **4**

Number of broad habitats in which the taxon has its optimum: **2**

## Threats and protection

Red List 2017 (national categories): **C1t - critically threatened taxon, declining**

Red List 2017 (IUCN categories): **CR - critically endangered**

Legal protection: **endangered taxon**