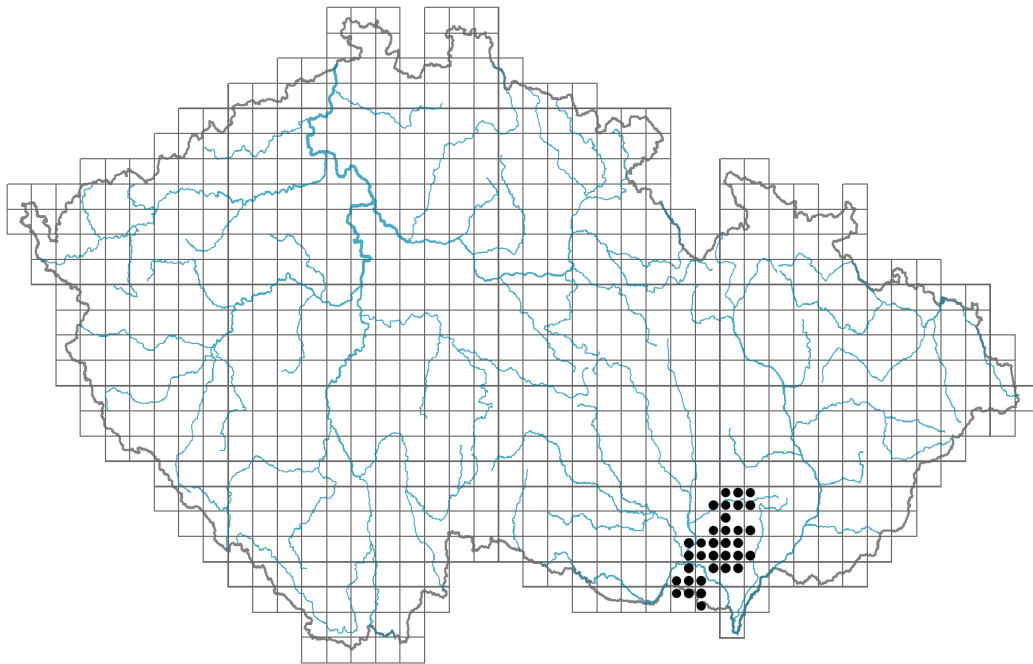


Jurinea mollis

Distribution



© Pavel Veselý

Map info

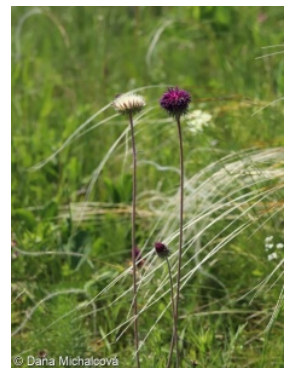
● revised records

○ unrevised records

On the map are not visualized records without the coordinates and records marked as incorrect or doubtful.



© Jan Pokorný



© Dana Michalčová



© Dana Michalčová

Habitus and growth type

Height [m]: **0.3-0.7**

Growth form: **polycarpic perennial non-clonal herb**

Life form: **hemicryptophyte**

Leaf

Leaf presence and metamorphosis: **leaves present, not modified**

Leaf arrangement (phyllotaxis): **rosulate**

Leaf shape: **simple - pinnately divided**

Stipules: **absent**

Petiole: **present**

Flower

Flowering period [month]: **May-July**

Flower colour: **red-violet**

Flower symmetry: **actinomorphic**

Perianth type: **calyx reduced, corolla present**

Perianth fusion: **fused**

Shape of the sympetalous corolla or syntepalous perianth: **tubular**

Calyx fusion: **pappus**

Inflorescence type: **anthodium solitarium**

Fruit, seed and dispersal

Fruit type: **dry fruit - achene/cypsela/samara**

Fruit colour: **brown**

Dispersal unit (diaspore): **fruit, infrutescence or its part**

Dispersal strategy: **Allium (mainly autochory)**

Myrmecochory: **probably myrmecochorous**

Belowground organs and clonality

Primary root: **present**

Bud bank

Number of buds per shoot at the soil surface (root buds excluded): **5**

Number of buds per shoot at a depth of 0–10 cm (root buds excluded): **15**

Number of buds per shoot at a depth greater than 10 cm (root buds excluded): **0**

Size of the belowground bud bank (root buds excluded): **20**

Depth of the belowground bud bank (root buds excluded) [cm]: **4**

Number of buds per shoot at the soil surface (root buds included): **5**

Number of buds per shoot at a depth of 0–10 cm (root buds included): **15**

Number of buds per shoot at a depth greater than 10 cm (root buds included): **0**

Size of the belowground bud bank (root buds included): **20**

Depth of the belowground bud bank (root buds included) [cm]: **4**

Trophic mode

Parasitism and mycoheterotrophy: **autotrophic**

Carnivory: **non-carnivorous**

Symbiotic nitrogen fixation: **no nitrogen-fixing symbionts**

Karyology

Chromosome number (2n): **34**

Ploidy level (x): **2**

2C genome size [Mbp]: **2792.06**

1Cx monoploid genome size [Mbp]: **1396.03**

Genomic GC content: **38.7 %**

Taxon origin

Origin in the Czech Republic: **native**

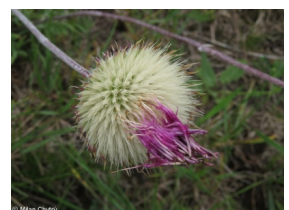
Ecological indicator values

Ellenberg-type indicator values

Light indicator value: **8 - light plant, only exceptionally occurring at less than 40% of diffuse radiation incident in an open area**

Temperature indicator value: **7 - heat indicator, occurring in relatively warm lowlands**

Moisture indicator value: **2 - transition between values 1 and 3**



Reaction indicator value: **9 - base and lime indicator, always occurring in calcium-rich conditions**

Nutrient indicator value: **3 - occurring at nutrient-poor sites more frequently than at average sites and exceptionally at rich sites**

Salinity indicator value: **0 - not salt tolerant, glycophyte**

Indicator values for disturbance

Whole-community disturbance frequency indicator value: **0**

Herb layer disturbance frequency indicator value: **0**

Whole-community disturbance severity indicator value: **0.18**

Herb layer disturbance severity indicator value: **0.22**

Whole-community structure based disturbance indicator value: **0.64**

Herb layer structure-based disturbance indicator value: **0.75**

Habitat and sociology

Occurrence in habitats

8 Dry grasslands

8C Narrow-leaved sub-continental steppes: **2 - optimum**

8D Broad-leaved dry grasslands: **1 - rare occurrence**

12 Forests

12H Peri-Alpidic basiphilous thermophilous oak forests: **1 - rare occurrence**

Affinity to the forest environment

Affinity to the forest environment in Thermophyticum: **0 - taxon that does not spontaneously occur in Czech forests**

Affinity to the forest environment in Mesophyticum and Oreophyticum: **0 - taxon that does not spontaneously occur in Czech forests**

Diagnostic taxon

Diagnostic taxon of associations: [THD06 *Astragalo exscapi-Crambetum tatariae*](#), [THE03 *Polygalo majoris-Brachypodietum pinnati*](#)

Constant taxon

Constant taxon of associations: [THD06 *Astragalo exscapi-Crambetum tatariae*](#)

Ecological specialization indices

Ecological specialization index for all vegetation types: **6.5**

Ecological specialization index for non-forest vegetation: **6.5**

Colonization ability

Index of colonization success (ICS): **1**

Index of colonization potential (ICP): **1**

Distribution and frequency

Elevational belt in the Czech Republic: **colline belt**

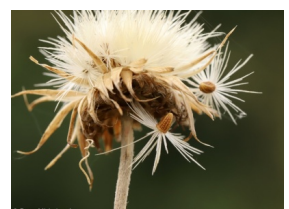
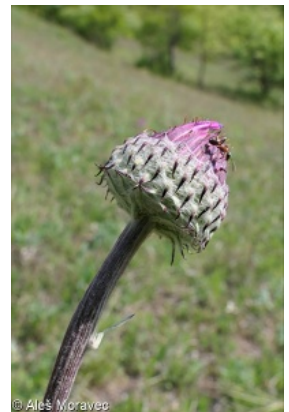
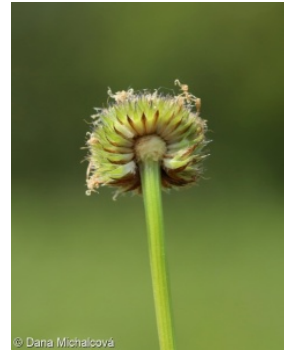
Occurrence frequency in the basic grid mapping cells and quadrants of the basic grid mapping cells: **15**

taxon.data.freq_in_quad: **34**

Commonness in vegetation plots from the Czech Republic

Occurrence frequency in vegetation plots: **0.1 %**

Occurrence frequency in vegetation plots with a cover above 5%: **3.3 %**



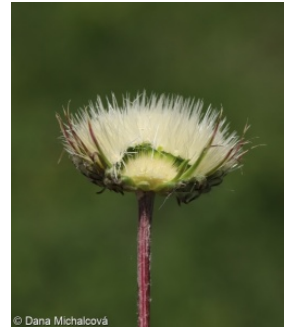
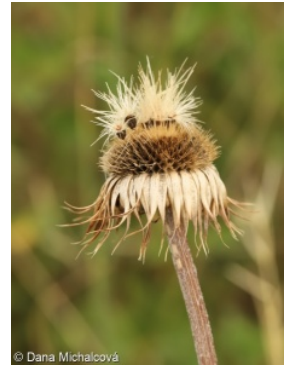
Occurrence frequency in vegetation plots with a cover above 25%: **0 %**
Occurrence frequency in vegetation plots with a cover above 50%: **0 %**
Mean percentage cover in vegetation plots: **2.4 %**
Maximum percentage cover in vegetation plots: **13 %**
Number of habitats with taxon occurrence in the Czech Republic
Number of narrow habitats in which the taxon occurs: **3**
Number of narrow habitats in which the taxon has its optimum: **1**
Number of broad habitats in which the taxon occurs: **2**
Number of broad habitats in which the taxon has its optimum: **1**

Threats and protection

Red List 2017 (national categories): **C2b - endangered taxon, rare and declining**

Red List 2017 (IUCN categories): **VU - vulnerable**

Legal protection: **endangered taxon**





© Pavel Veselý



© Jan Pokorný



© Milan Chytrý



© Milan Chytrý

