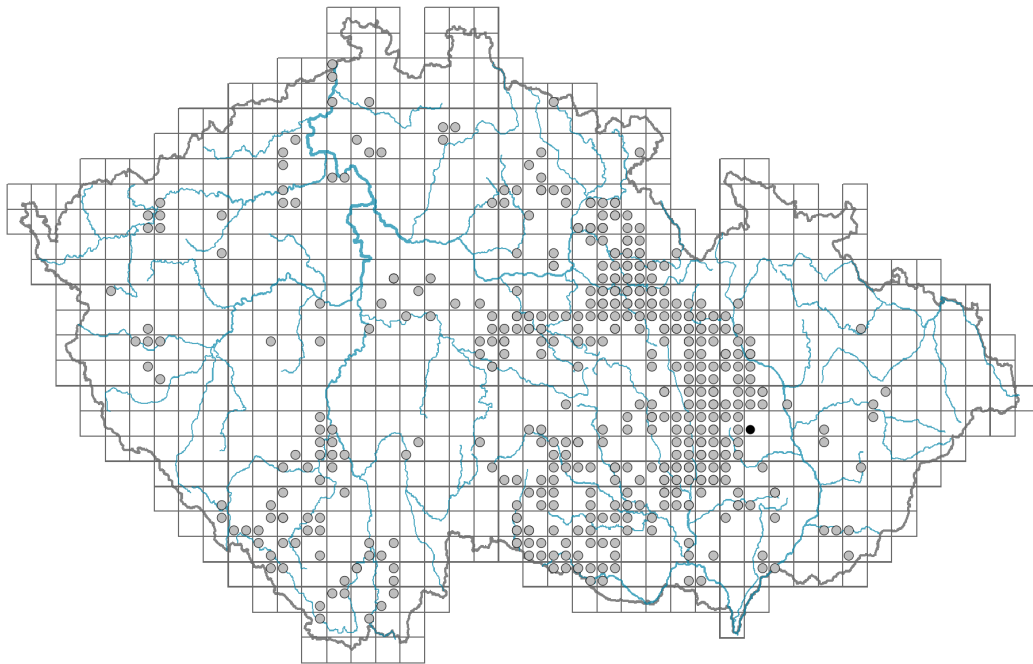


# *Knautia drymeia*

## Distribution



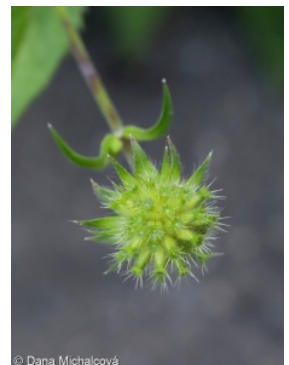
© Petr Kocna

### Map info

● revised records

● unrevised records

On the map are not visualized records without the coordinates and records marked as incorrect or doubtful.



© Dana Michalčová



© Dana Michalčová



© Dana Michalčová

## Habitus and growth type

Height [m]: **0.4-0.8**

Growth form: **polycarpic perennial non-clonal herb**

Life form: **hemicryptophyte**

Life strategy: **C - competitor**

Life strategy (Pierce method based on leaf traits): **CR**

Life strategy (Pierce method, C-score): **57.1 %**

Life strategy (Pierce method, S-score): **0 %**

Life strategy (Pierce method, R-score): **42.9 %**

## Leaf

Leaf presence and metamorphosis: **leaves present, not modified**

Leaf arrangement (phyllotaxis): **opposite, rosulate**

Leaf shape: **simple - entire**

Stipules: **absent**

Petiole: **both present and absent**

Leaf life span: **evergreen**

## Flower

Flowering period [month]: **June-September**

Flowering phase: **6 Cornus sanguinea-Melica uniflora (start of early summer)**

Flower colour: **red, red-violet**

Flower symmetry: **zygomorphic**

Perianth type: **calyx reduced, corolla present**

Perianth fusion: **fused**

Shape of the sympetalous corolla or syntepalous perianth: **funnel-shaped, tubular**

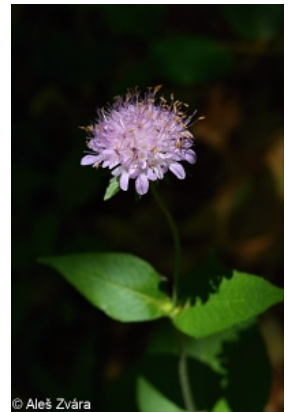
Calyx fusion: **synsepalous**

Inflorescence type: **capitulum**

Dicliny: **gynodioecious**

Generative reproduction type: **facultative allogamy**

Pollination syndrome: **insect-pollination**



## Fruit, seed and dispersal

Fruit type: **dry fruit - achene/cypsela/samara**

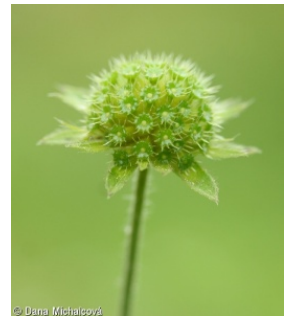
Fruit colour: **yellow, brown**

Reproduction type: **only by seed/spores**

Dispersal unit (diaspore): **fruit, infrutescence or its part**

Dispersal strategy: **Allium (mainly autochory)**

Myrmecochory: **myrmecochorous**



## Belowground organs and clonality

Shoot metamorphosis: **pleiocorm**

Root metamorphosis: **primary storage root**

Storage organ: **pleiocorm, primary storage root**

Shoot life span (cyclicity): **monocyclic shoots prevailing**

Branching type of stem-derived organs of clonal growth: **monopodial**

Primary root: **present**

Bud bank

Number of buds per shoot at the soil surface (root buds excluded): **5**

Number of buds per shoot at a depth of 0–10 cm (root buds excluded): **15**

Number of buds per shoot at a depth greater than 10 cm (root buds excluded): **0**

Size of the belowground bud bank (root buds excluded): **20**

Depth of the belowground bud bank (root buds excluded) [cm]: **4**

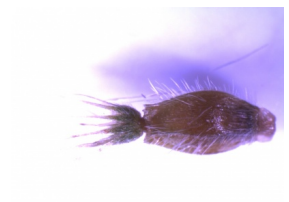
Number of buds per shoot at the soil surface (root buds included): **5**

Number of buds per shoot at a depth of 0–10 cm (root buds included): **15**

Number of buds per shoot at a depth greater than 10 cm (root buds included): **0**

Size of the belowground bud bank (root buds included): **20**

Depth of the belowground bud bank (root buds included) [cm]: **4**



## Trophic mode

Parasitism and mycoheterotrophy: **autotrophic**

Carnivory: **non-carnivorous**

Symbiotic nitrogen fixation: **no nitrogen-fixing symbionts**



## Karyology

Chromosome number (2n): **40**

Ploidy level (x): **4**  
 2C genome size [Mbp]: **12730.99**  
 1Cx monoploid genome size [Mbp]: **3182.75**  
 Genomic GC content: **39.5 %**

## Taxon origin

Origin in the Czech Republic: **native**

## Ecological indicator values

### Ellenberg-type indicator values

Light indicator value: **5 - semi-shade plant, only exceptionally occurring in full light, but usually at more than 10% of the diffuse radiation incident in an open area**

Temperature indicator value: **6 - transition between values 5 and 7**

Moisture indicator value: **5 - indicator of fresh soils, focus on soils of average moisture, missing on wet and on soils that frequently dry out**

Reaction indicator value: **6 - transition between values 5 and 7**

Nutrient indicator value: **5 - occurring at moderately nutrient-rich sites, and less frequently at poor and rich sites**

Salinity indicator value: **0 - not salt tolerant, glycophyte**

### Indicator values for disturbance

Whole-community disturbance frequency indicator value: **-1.9**

Herb layer disturbance frequency indicator value: **-0.65**

Whole-community disturbance severity indicator value: **0.24**

Herb layer disturbance severity indicator value: **0.09**

Whole-community structure based disturbance indicator value: **0.09**

Herb layer structure-based disturbance indicator value: **0.15**

## Habitat and sociology

### Occurrence in habitats

#### 8 Dry grasslands

8B Submediterranean dry grasslands on rock outcrops: **1 - rare occurrence**

8F Thermophilous forest fringe vegetation: **2 - optimum**

#### 12 Forests

12A Alder carrs: **1 - rare occurrence**

12B Alluvial forests: **2 - optimum**

12C Oak-hornbeam forests: **2 - optimum**

12D Ravine forests: **1 - rare occurrence**

12E Herb-rich beech forests: **1 - rare occurrence**

12F Limestone beech forests: **1 - rare occurrence**

12I Sub-continental thermophilous oak forests: **1 - rare occurrence**

#### 13 Anthropogenic vegetation

13F Herbaceous vegetation of forests clearings and Rubus scrub: **1 - rare occurrence**

### Affinity to the forest environment

Affinity to the forest environment in Thermophyticum: **1.2 - taxon occurring mainly**



**along forest edges and in forest openings, including forest roads and paths, windthrow sites, burnt sites and forest clearings**

Affinity to the forest environment in Mesophyticum and Oreophyticum: **1.2 - taxon occurring mainly along forest edges and in forest openings, including forest roads and paths, windthrow sites, burnt sites and forest clearings**

Ecological specialization indices

Ecological specialization index for all vegetation types: **4.8**

Ecological specialization index for non-forest vegetation: **3.6**

Ecological specialization index for forest vegetation: **5.7**

Colonization ability

Index of colonization success (ICS): **1**

Index of colonization potential (ICP): **1**

**Distribution and frequency**

Floristic zone: **southern temperate, submeridional**

Floristic region: **Europe**

Continental degree: **5**

Distribution range extension along the continentality gradient: **1**

Elevational belt in the Czech Republic: **colline belt**

Occurrence frequency in the basic grid mapping cells and quadrants of the basic grid mapping cells: **211**

taxon.data.freq\_in\_quad: **396**

Commonness in vegetation plots from the Czech Republic

Occurrence frequency in vegetation plots: **0.2 %**

Occurrence frequency in vegetation plots with a cover above 5%: **3.2 %**

Occurrence frequency in vegetation plots with a cover above 25%: **0 %**

Occurrence frequency in vegetation plots with a cover above 50%: **0 %**

Mean percentage cover in vegetation plots: **2.3 %**

Maximum percentage cover in vegetation plots: **13 %**

Number of habitats with taxon occurrence in the Czech Republic

Number of narrow habitats in which the taxon occurs: **10**

Number of narrow habitats in which the taxon has its optimum: **3**

Number of broad habitats in which the taxon occurs: **3**

Number of broad habitats in which the taxon has its optimum: **2**

**Threats and protection**

Red List 2017 (national categories): **C4a - near threatened taxon**

Red List 2017 (IUCN categories): **LC - least concern**

Legal protection: **not protected by law**