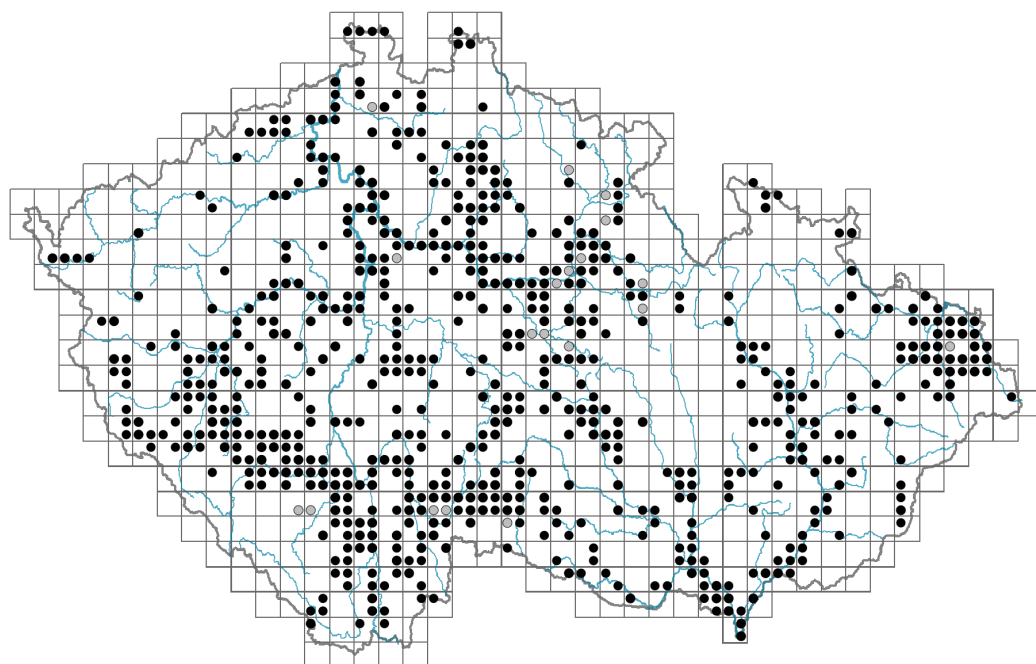


Leersia oryzoides

Distribution



Map info

● revised records

● unrevised records

On the map are not visualized records without the coordinates and records marked as incorrect or doubtful.

Habitus and growth type

Height [m]: **0.5-1.5**

Growth form: **clonal herb**

Life form: **hemicryptophyte**

Life strategy: **C - competitor**

Leaf

Leaf presence and metamorphosis: **leaves present, not modified**

Leaf arrangement (phyllotaxis): **alternate**

Leaf shape: **simple - entire**

Stipules: **absent**

Petiole: **absent**

Leaf life span: **summer green**

Leaf anatomy: **helomorphic, hydromorphic**

Flower

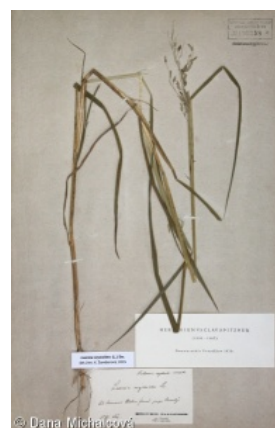
Flowering period [month]: **August-September**

Flowering phase: **8 Clematis vitalba-Galium sylvaticum (mid-summer)**

Flower colour: **green**

Perianth type: **reduced**

Perianth fusion: **reduced**



Inflorescence type: **panicula e spiculis composita**

Dicliny: **synoecious**

Generative reproduction type: **autogamy**

Pollination syndrome: **cleistogamy**

Fruit, seed and dispersal

Fruit type: **dry fruit - caryopsis**

Fruit colour: **brown**

Reproduction type: **by seed/spores and vegetatively**

Dispersal unit (diaspore): **fruit, infrutescence or its part**

Dispersal strategy: **Sparganium (mainly autochory and hydrochory)**

Myrmecochory: **non-myrmecochorous (b)**

Belowground organs and clonality

Shoot metamorphosis: **stolon**

Storage organ: **stolon**

Type of clonal growth organ: **hypogeogenous rhizome**

Freely dispersible organs of clonal growth: **absent**

Shoot life span (cyclicity): **dicyclic or polycyclic shoots prevailing**

Branching type of stem-derived organs of clonal growth: **sympodial**

Primary root: **absent**

Persistence of the clonal growth organ [year]: **4**

Number of clonal offspring: **4.3**

Lateral spreading distance by clonal growth [m]: **0.18**

Clonal index: **6**

Bud bank

Number of buds per shoot at the soil surface (root buds excluded): **5**

Number of buds per shoot at a depth of 0–10 cm (root buds excluded): **15**

Number of buds per shoot at a depth greater than 10 cm (root buds excluded): **0**

Size of the belowground bud bank (root buds excluded): **20**

Depth of the belowground bud bank (root buds excluded) [cm]: **4**

Number of buds per shoot at the soil surface (root buds included): **5**

Number of buds per shoot at a depth of 0–10 cm (root buds included): **15**

Number of buds per shoot at a depth greater than 10 cm (root buds included): **0**

Size of the belowground bud bank (root buds included): **20**

Depth of the belowground bud bank (root buds included) [cm]: **4**

Trophic mode

Parasitism and mycoheterotrophy: **autotrophic**

Carnivory: **non-carnivorous**

Symbiotic nitrogen fixation: **no nitrogen-fixing symbionts**

Karyology

Chromosome number (2n): **48**

Ploidy level (x): **4**



2C genome size [Mbp]: **1552.15**
 1Cx monoploid genome size [Mbp]: **388.04**
 Genomic GC content: **44.9 %**

Taxon origin

Origin in the Czech Republic: **native**

Ecological indicator values

Ellenberg-type indicator values

Light indicator value: **7 - half-light plant, mostly occurring at full light, but also in the shade up to about 30% of diffuse radiation incident in an open area**

Temperature indicator value: **6 - transition between values 5 and 7**

Moisture indicator value: **9 - wetness indicator, focus on often soaked, poorly aerated soils**

Reaction indicator value: **7 - indicator of slightly acidic to slightly basic conditions, never occurring in very acidic conditions**

Nutrient indicator value: **8 - pronounced nutrient indicator**

Salinity indicator value: **1 - salt tolerant, mostly on low-salt to salt-free soils, but occasionally on slightly salty soils**

Indicator values for disturbance

Whole-community disturbance frequency indicator value: **-0.55**

Herb layer disturbance frequency indicator value: **-0.55**

Whole-community disturbance severity indicator value: **0.32**

Herb layer disturbance severity indicator value: **0.36**

Whole-community structure based disturbance indicator value: **0.6**

Herb layer structure-based disturbance indicator value: **0.62**

Habitat and sociology

Occurrence in habitats

3 Aquatic vegetation

3C Macrophytic vegetation of oligotrophic lakes and pools: **1 - rare occurrence**

4 Wetland and riverine herbaceous vegetation

4C Eutrophic vegetation of muddy substrata: **2 - optimum**

4D Riverine reed vegetation: **2 - optimum**

4E Reed vegetation of brooks: **1 - rare occurrence**

4H Vegetation of low annual hygrophilous herbs: **2 - optimum**

4I Vegetation of nitrophilous annual hygrophilous herbs: **2 - optimum**

11 Heathlands and scrub

11J Willow galleries of loamy and sandy river banks: **1 - rare occurrence**

Affinity to the forest environment

Affinity to the forest environment in Thermophyticum: **0 - taxon that does not spontaneously occur in Czech forests**

Affinity to the forest environment in Mesophyticum and Oreophyticum: **0 - taxon that does not spontaneously occur in Czech forests**

Diagnostic taxon



© Dana Michalová

Diagnostic taxon of classes: [MA Isoëto-Nano-Juncetea](#)

Diagnostic taxon of alliances: [MAA Eleocharition ovatae](#)

Diagnostic taxon of associations: [MAA02 Cyperetum micheliani](#), [MCA10 Phalarido arundinaceae-Bolboschoenetum laticarpi](#), [MCE05 Leersietum oryzoidis](#)

Constant taxon

Constant taxon of associations: [MAA02 Cyperetum micheliani](#), [MCE05 Leersietum oryzoidis](#)

Dominant taxon

Dominant taxon of associations: [MCE05 Leersietum oryzoidis](#)

Ecological specialization indices

Ecological specialization index for all vegetation types: **4.5**

Ecological specialization index for non-forest vegetation: **4.5**

Colonization ability

Index of colonization success (ICS): **1**

Index of colonization potential (ICP): **1**

Distribution and frequency

Floristic zone: **northern temperate, southern temperate, submeridional, meridional, subtropical, tropical**

Floristic region: **circumpolar**

Distribution range extension along the continentality gradient: **5**

Elevational belt in the Czech Republic: **lowlands, colline belt**

Occurrence frequency in the basic grid mapping cells and quadrants of the basic grid mapping cells: **360**

taxon.data.freq_in_quad: 656

Commonness in vegetation plots from the Czech Republic

Occurrence frequency in vegetation plots: **0.7 %**

Occurrence frequency in vegetation plots with a cover above 5%: **42.7 %**

Occurrence frequency in vegetation plots with a cover above 25%: **33 %**

Occurrence frequency in vegetation plots with a cover above 50%: **28.6 %**

Mean percentage cover in vegetation plots: **27.8 %**

Maximum percentage cover in vegetation plots: **88 %**

Number of habitats with taxon occurrence in the Czech Republic

Number of narrow habitats in which the taxon occurs: **7**

Number of narrow habitats in which the taxon has its optimum: **4**

Number of broad habitats in which the taxon occurs: **3**

Number of broad habitats in which the taxon has its optimum: **1**

Threats and protection

Red List 2017 (national categories): **C3 - vulnerable taxon**

Red List 2017 (IUCN categories): **NT - near threatened**

Legal protection: **not protected by law**