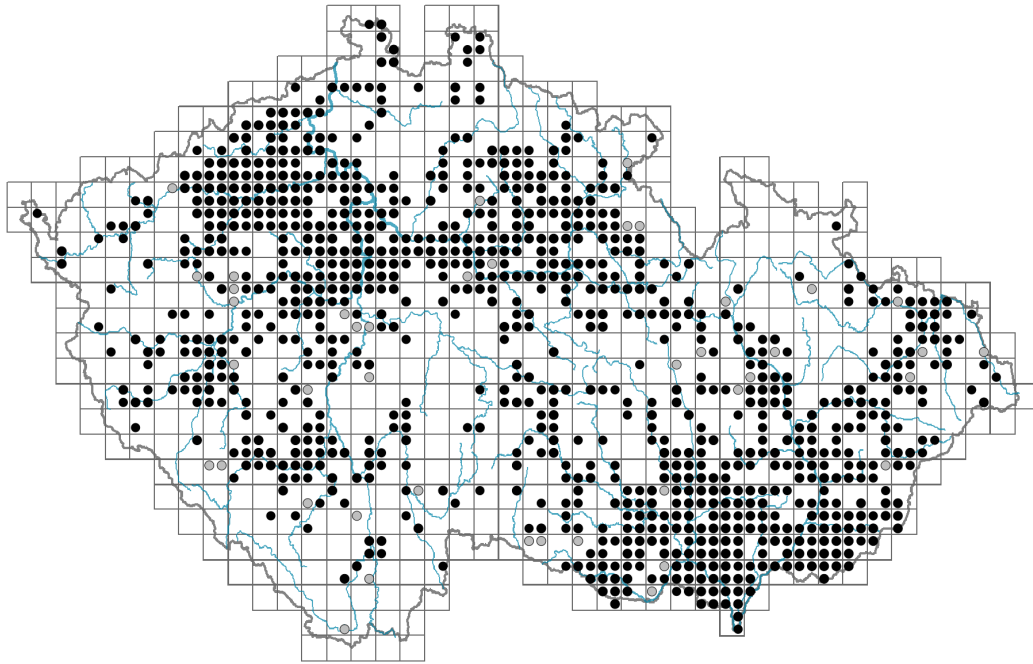


Lepidium draba

Distribution



Map info

● revised records

○ unrevised records

On the map are not visualized records without the coordinates and records marked as incorrect or doubtful.

Habitus and growth type

Height [m]: **0.2-0.5**

Growth form: **clonal herb**

Life form: **geophyte**

Life strategy: **CSR - competitor/stress-tolerator/ruderal**

Life strategy (Pierce method based on leaf traits): **CR**

Life strategy (Pierce method, C-score): **47.6 %**

Life strategy (Pierce method, S-score): **0 %**

Life strategy (Pierce method, R-score): **52.4 %**

Leaf

Leaf presence and metamorphosis: **leaves present, not modified**

Leaf arrangement (phyllotaxis): **alternate**

Leaf shape: **simple - entire**

Stipules: **absent**

Petiole: **absent**

Leaf life span: **summer green**

Leaf anatomy: **scleromorphic, mesomorphic**



Flower

Flowering period [month]: **May-August**

Flowering phase: **4 Fagus sylvatica-Galeobdolon (start of mid-spring)**

Flower colour: **white**

Flower symmetry: **actinomorphic**

Perianth type: **calyx and corolla**

Perianth fusion: **free**

Calyx fusion: **aposepalous**

Inflorescence type: **corymbothyrus**

Dicliny: **synoecious**

Generative reproduction type: **allogamy self-incompatibility**

Pollination syndrome: **insect-pollination, selfing**



Fruit, seed and dispersal

Fruit type: **dry fruit - silicula**

Fruit colour: **brown**

Reproduction type: **by seed/spores and vegetatively**

Dispersal unit (diaspore): **seed, fruit, infrutescence or its part**

Dispersal strategy: **Allium (mainly autochory)**

Myrmecochory: **non-myrmecochorous (b)**

Belowground organs and clonality

Shoot metamorphosis: **stolon**

Root metamorphosis: **root shoot**

Storage organ: **stolon**

Type of clonal growth organ: **root with adventitious buds**

Freely dispersible organs of clonal growth: **absent**

Shoot life span (cyclicality): **monocyclic shoots prevailing**

Branching type of stem-derived organs of clonal growth: **sympodial**

Primary root: **absent**

Persistence of the clonal growth organ [year]: **3.5**

Number of clonal offspring:

Lateral spreading distance by clonal growth [m]: **0.12**

Clonal index: **3**

Position of root buds: **lateral roots**

Role of root buds in life-history of a plant: **additive**

Bud bank

Number of buds per shoot at the soil surface (root buds excluded):

Number of buds per shoot at a depth of 0–10 cm (root buds excluded):

Number of buds per shoot at a depth greater than 10 cm (root buds excluded):

Size of the belowground bud bank (root buds excluded):

Depth of the belowground bud bank (root buds excluded) [cm]:

Number of buds per shoot at the soil surface (root buds included):

Number of buds per shoot at a depth of 0–10 cm (root buds included):

Number of buds per shoot at a depth greater than 10 cm (root buds included): **13**

Size of the belowground bud bank (root buds included): **31**

Depth of the belowground bud bank (root buds included) [cm]: **9**

Trophic mode

Parasitism and mycoheterotrophy: **autotrophic**

Carnivory: **non-carnivorous**

Symbiotic nitrogen fixation: **no nitrogen-fixing symbionts**

Karyology

Chromosome number (2n): **64**

Ploidy level (x): **8**

2C genome size [Mbp]: **1739.54**

1Cx monoploid genome size [Mbp]: **217.44**

Genomic GC content: **38.9 %**

Taxon origin

Origin in the Czech Republic: **archaeophyte**

Invasion status: **naturalized**

Geographic origin: **Mediterranean**

Period of introduction: **Late Middle Ages (1200-1500)**

Introduction pathway: **unintentional - anthropogenic**

Ecological indicator values

Ellenberg-type indicator values

Light indicator value: **8 - light plant, only exceptionally occurring at less than 40% of diffuse radiation incident in an open area**

Temperature indicator value: **7 - heat indicator, occurring in relatively warm lowlands**

Moisture indicator value: **4 - transition between values 3 and 5**

Reaction indicator value: **7 - indicator of slightly acidic to slightly basic conditions, never occurring in very acidic conditions**

Nutrient indicator value: **6 - transition between values 5 and 7**

Salinity indicator value: **0 - not salt tolerant, glycophyte**

Indicator values for disturbance

Whole-community disturbance frequency indicator value: **-0.43**

Herb layer disturbance frequency indicator value: **-0.26**

Whole-community disturbance severity indicator value: **0.75**

Herb layer disturbance severity indicator value: **0.76**

Whole-community structure based disturbance indicator value: **0.61**

Herb layer structure-based disturbance indicator value: **0.65**

Habitat and sociology

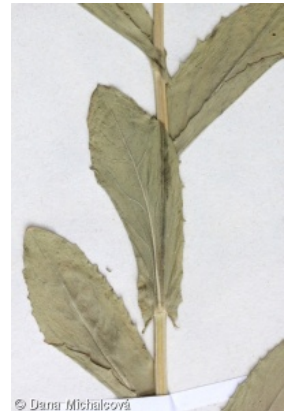
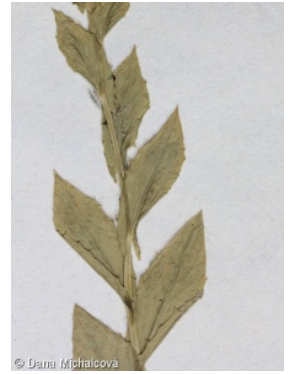
Occurrence in habitats

6 Meadows and mesic pastures

6C Pastures and park grasslands: **1 - rare occurrence**

6G Vegetation of wet disturbed soils: **1 - rare occurrence**

8 Dry grasslands



8C Narrow-leaved sub-continental steppes: **1 - rare occurrence**

11 Heathlands and scrub

11L Tall mesic and xeric shrub: **1 - rare occurrence**

11R Scrub and pioneer woodland of forests clearings: **2 - optimum**

12 Forests

12H Peri-Alpidic basiphilous thermophilous oak forests: **1 - rare occurrence**

12I Sub-continental thermophilous oak forests: **1 - rare occurrence**

12T Robinia pseudacacia plantations: **2 - optimum**

12U Plantations of broad-leaved non-native trees: **2 - optimum**

13 Anthropogenic vegetation

13A Annual vegetation of ruderal habitats: **2 - optimum**

13B Annual vegetation of arable land: **2 - optimum**

13C Annual vegetation of trampled habitats: **1 - rare occurrence**

13D Perennial thermophilous ruderal vegetation: **2 - optimum**

13E Perennial nitrophilous herbaceous vegetation of mesic sites: **1 - rare occurrence**

Affinity to the forest environment

Affinity to the forest environment in Thermophyticum: **0 - taxon that does not spontaneously occur in Czech forests**

Affinity to the forest environment in Mesophyticum and Oreophyticum: **0 - taxon that does not spontaneously occur in Czech forests**

Diagnostic taxon

Diagnostic taxon of alliances: [XCC *Convolvulo arvensis-Elytrigion repentis*](#)

Diagnostic taxon of associations: [XBG07 *Sisymbrietum loeselii*](#), [XCB02 *Berteroetum incanae*](#), [XCC04 *Cardarietum drabae*](#)

Constant taxon

Constant taxon of associations: [XCC04 *Cardarietum drabae*](#)

Dominant taxon

Dominant taxon of associations: [XCC04 *Cardarietum drabae*](#)

Ecological specialization indices

Ecological specialization index for all vegetation types: **4.3**

Ecological specialization index for non-forest vegetation: **4.3**

Colonization ability

Index of colonization success (ICS): **4**

Index of colonization potential (ICP): **5**

Optimum successional age [years]: **11**

Distribution and frequency

Floristic zone: **northern temperate, southern temperate, submeridional, meridional**

Floristic region: **Europe, Western Asia**

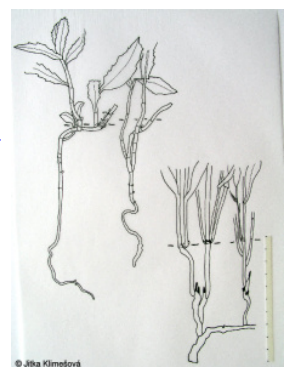
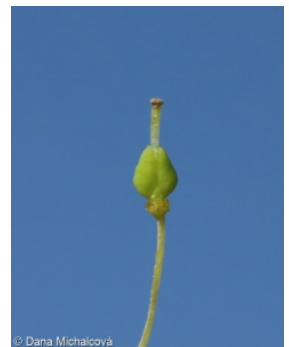
Continental degree: **8**

Distribution range extension along the continentality gradient: **4**

Elevational belt in the Czech Republic: **lowlands, colline belt**

Occurrence frequency in the basic grid mapping cells and quadrants of the basic grid mapping cells: 430

taxon.data.freq_in_quad: 976



Commonness in vegetation plots from the Czech Republic

Occurrence frequency in vegetation plots: **0.7 %**

Occurrence frequency in vegetation plots with a cover above 5%: **22.9 %**

Occurrence frequency in vegetation plots with a cover above 25%: **16.5 %**

Occurrence frequency in vegetation plots with a cover above 50%: **11 %**

Mean percentage cover in vegetation plots: **12.4 %**

Maximum percentage cover in vegetation plots: **88 %**

Number of habitats with taxon occurrence in the Czech Republic

Number of narrow habitats in which the taxon occurs: **14**

Number of narrow habitats in which the taxon has its optimum: **6**

Number of broad habitats in which the taxon occurs: **5**

Number of broad habitats in which the taxon has its optimum: **3**

Threats and protection

Red List 2017 (national categories): **taxon is not on the Red List**

Red List 2017 (IUCN categories): **LC(NA) - least concern (taxon is not on the Red List)**

Legal protection: **not protected by law**