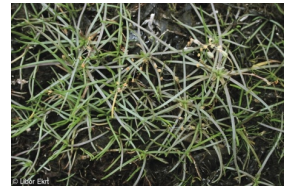
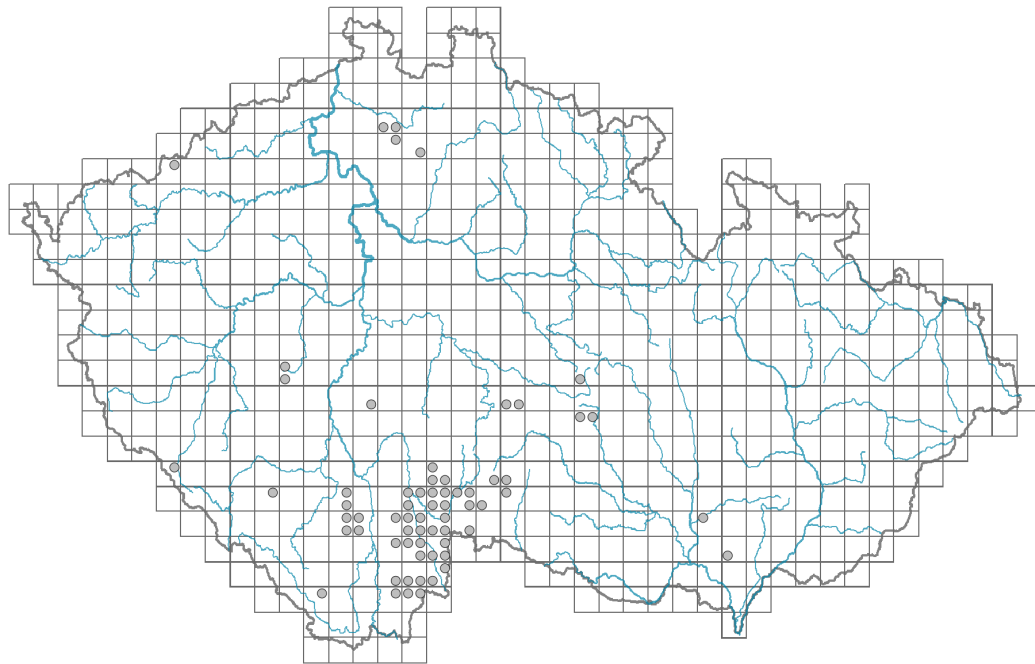


Littorella uniflora

Distribution



Map info

● revised records

● unrevised records

On the map are not visualized records without the coordinates and records marked as incorrect or doubtful.



Habitus and growth type

Height [m]: **0.02-0.15**

Growth form: **clonal herb**

Life form: **hemicryptophyte**

Life strategy: **CSR - competitor/stress-tolerator/ruderal**

Life strategy (Pierce method based on leaf traits): **S**

Life strategy (Pierce method, C-score): **2.3 %**

Life strategy (Pierce method, S-score): **92.2 %**

Life strategy (Pierce method, R-score): **5.5 %**

Leaf

Leaf presence and metamorphosis: **leaves present, not modified**

Leaf arrangement (phyllotaxis): **rosulate**

Leaf shape: **simple - entire**

Stipules: **absent**

Petiole: **absent**

Leaf life span: **evergreen**

Leaf anatomy: **hydromorphic**

Flower

Flowering period [month]: **May-September**

Flowering phase: **8 Clematis vitalba-Galium sylvaticum (mid-summer)**

Flower colour: **green**

Flower symmetry: **actinomorphic**

Perianth type: **calyx and corolla**

Perianth fusion: **fused**

Shape of the sympetalous corolla or syntepalous perianth: **tubular**

Calyx fusion: **fused at the base**

Inflorescence type: **flores solitarii**

Dicliny: **monoecious**

Generative reproduction type: **facultative allogamy**

Pollination syndrome: **wind-pollination**

Fruit, seed and dispersal

Fruit type: **dry fruit - achene/cypsela/samara**

Fruit colour: **brown**

Reproduction type: **by seed/spores and vegetatively**

Dispersal unit (diaspore): **seed**

Dispersal strategy: **Sparganium (mainly autochory and hydrochory)**

Myrmecochory: **non-myrmecochorous (b) nv**

Belowground organs and clonality

Shoot metamorphosis: **stolon, rhizome**

Storage organ: **stolon, rhizome**

Type of clonal growth organ: **stolon**

Freely dispersible organs of clonal growth: **absent**

Shoot life span (cyclicity): **monocyclic shoots prevailing**

Branching type of stem-derived organs of clonal growth: **sympodial**

Primary root: **absent**

Persistence of the clonal growth organ [year]: **1.5**

Number of clonal offspring: **4.8**

Lateral spreading distance by clonal growth [m]: **0.1**

Clonal index: **5**

Bud bank

Number of buds per shoot at the soil surface (root buds excluded):

Number of buds per shoot at a depth of 0–10 cm (root buds excluded):

Number of buds per shoot at a depth greater than 10 cm (root buds excluded):

Size of the belowground bud bank (root buds excluded):

Depth of the belowground bud bank (root buds excluded) [cm]:

Number of buds per shoot at the soil surface (root buds included):

Number of buds per shoot at a depth of 0–10 cm (root buds included):

Number of buds per shoot at a depth greater than 10 cm (root buds included):

Size of the belowground bud bank (root buds included):

Depth of the belowground bud bank (root buds included) [cm]:

Trophic mode

Parasitism and mycoheterotrophy: **autotrophic**

Carnivory: **non-carnivorous**

Symbiotic nitrogen fixation: **no nitrogen-fixing symbionts**

Karyology

Chromosome number (2n): **24**

Ploidy level (x): **4**

2C genome size [Mbp]: **11036.07**

1Cx monoploid genome size [Mbp]: **2759.02**

Genomic GC content: **41 %**

Taxon origin

Origin in the Czech Republic: **native**

Ecological indicator values

Ellenberg-type indicator values

Light indicator value: **8 - light plant, only exceptionally occurring at less than 40% of diffuse radiation incident in an open area**

Temperature indicator value: **5 - moderate heat indicator, occurring from lowland to montane belt, mainly in submontane-temperate areas**

Moisture indicator value: **10 - aquatic plant that survives long periods without soil flooding**

Reaction indicator value: **5 - indicator of moderate acidity, occurring rarely in strongly acidic as well as in neutral to alkaline conditions**

Nutrient indicator value: **2 - transition between values 1 and 3**

Salinity indicator value: **0 - not salt tolerant, glycophyte**

Indicator values for disturbance

Whole-community disturbance frequency indicator value: **-0.67**

Herb layer disturbance frequency indicator value: **-0.67**

Whole-community disturbance severity indicator value: **0.04**

Herb layer disturbance severity indicator value: **0.09**

Whole-community structure based disturbance indicator value: **0.73**

Herb layer structure-based disturbance indicator value: **0.75**

Habitat and sociology

Occurrence in habitats

3 Aquatic vegetation

3C Macrophytic vegetation of oligotrophic lakes and pools: **2 - optimum**

4 Wetland and riverine herbaceous vegetation

4H Vegetation of low annual hygrophilous herbs: **1 - rare occurrence**

Affinity to the forest environment

Affinity to the forest environment in Thermophyticum: **0 - taxon that does not spontaneously occur in Czech forests**

Affinity to the forest environment in Mesophyticum and Oreophyticum: **0 - taxon that does not spontaneously occur in Czech forests**

Diagnostic taxon

Diagnostic taxon of classes: [VD *Littorelletea uniflorae*](#)

Diagnostic taxon of alliances: [VDB *Eleocharition acicularis*](#)

Diagnostic taxon of associations: [VDB01 *Eleocharito-Littorelletum uniflorae*](#)

Constant taxon

Constant taxon of associations: [VDB01 *Eleocharito-Littorelletum uniflorae*](#)

Dominant taxon

Dominant taxon of associations: [VDB01 *Eleocharito-Littorelletum uniflorae*](#)

Ecological specialization indices

Ecological specialization index for all vegetation types: **4.9**

Ecological specialization index for non-forest vegetation: **4.9**

Colonization ability

Index of colonization success (ICS): **1**

Distribution and frequency

Floristic zone: **boreal, northern temperate, southern temperate, submeridional**

Floristic region: **Europe**

Continentality degree: **4**

Distribution range extension along the continentality gradient: **4**

Elevational belt in the Czech Republic: **colline belt, submontane belt**

Occurrence frequency in the basic grid mapping cells and quadrants of the basic grid mapping cells: **37**

taxon.data.freq_in_quad: **65**

Commonness in vegetation plots from the Czech Republic

Occurrence frequency in vegetation plots: **0.1 %**

Occurrence frequency in vegetation plots with a cover above 5%: **85.7 %**

Occurrence frequency in vegetation plots with a cover above 25%: **67.9 %**

Occurrence frequency in vegetation plots with a cover above 50%: **28.6 %**

Mean percentage cover in vegetation plots: **38.9 %**

Maximum percentage cover in vegetation plots: **88 %**

Number of habitats with taxon occurrence in the Czech Republic

Number of narrow habitats in which the taxon occurs: **2**

Number of narrow habitats in which the taxon has its optimum: **1**

Number of broad habitats in which the taxon occurs: **2**

Number of broad habitats in which the taxon has its optimum: **1**

Threats and protection

Red List 2017 (national categories): **C1b - critically threatened taxon, rare and declining**

Red List 2017 (IUCN categories): **CR - critically endangered**

Legal protection: **critically threatened taxon**