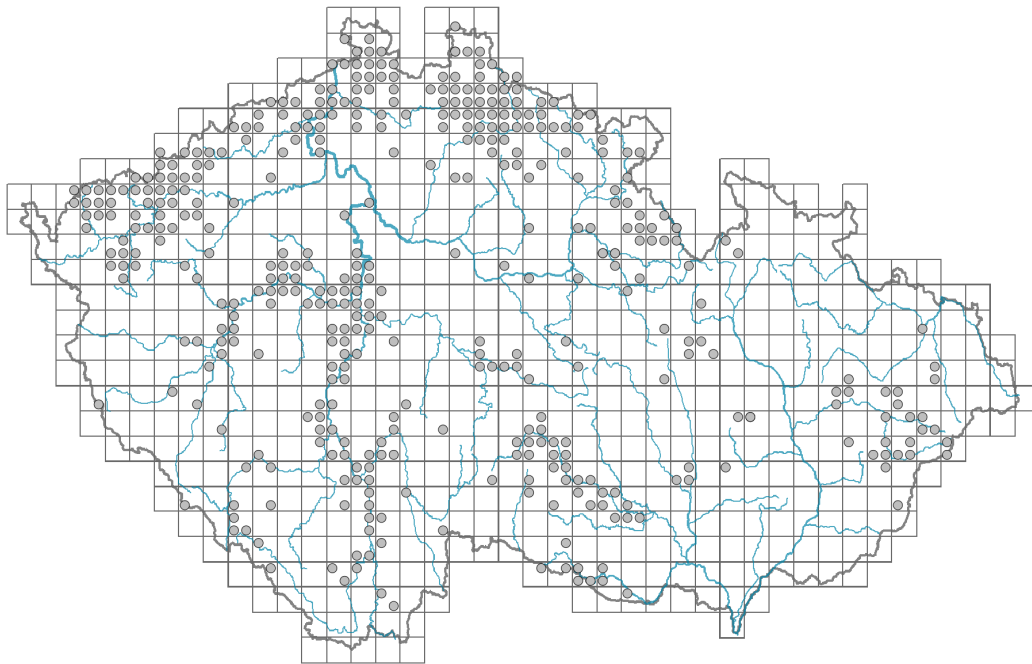


Nocca caerulea

Distribution



Map info

- revised records
- unrevised records

On the map are not visualized records without the coordinates and records marked as incorrect or doubtful.



Habitus and growth type

Height [m]: **0.15-0.3**

Growth form: **polycarpic perennial non-clonal herb**

Life form: **hemicryptophyte**

Life strategy: **CSR - competitor/stress-tolerator/ruderal**

Life strategy (Pierce method based on leaf traits): **R**

Life strategy (Pierce method, C-score): **10.2 %**

Life strategy (Pierce method, S-score): **0 %**

Life strategy (Pierce method, R-score): **89.8 %**

Leaf

Leaf presence and metamorphosis: **leaves present, not modified**

Leaf arrangement (phyllotaxis): **alternate, rosulate**

Leaf shape: **simple - entire**

Stipules: **absent**

Petiole: **both present and absent**

Leaf life span: **evergreen**

Leaf anatomy: **mesomorphic**

Flower

Flowering period [month]: **April-May**

Flowering phase: **3 Prunus avium-Ranunculus auricomus (end of early spring)**

Flower colour: **white**

Flower symmetry: **actinomorphic**

Perianth type: **calyx and corolla**

Perianth fusion: **free**

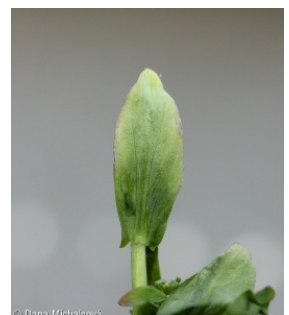
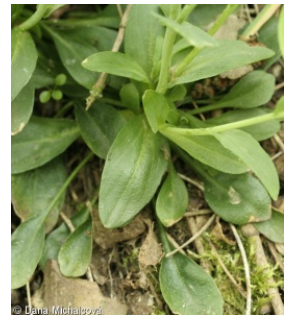
Calyx fusion: **aposepalous**

Inflorescence type: **racemus**

Dicliny: **synoecious**

Generative reproduction type: **mixed mating**

Pollination syndrome: **insect-pollination, selfing**



Fruit, seed and dispersal

Fruit type: **dry fruit - silicula**

Fruit colour: **brown**

Reproduction type: **only by seed/spores**

Dispersal unit (diaspore): **seed**

Dispersal strategy: **Allium (mainly autochory)**

Myrmecochory: **non-myrmecochorous (b)**

Belowground organs and clonality

Root metamorphosis: **primary storage root**

Storage organ: **primary storage root**

Shoot life span (cyclicality): **dicyclic or polycyclic shoots prevailing**

Branching type of stem-derived organs of clonal growth: **sympodial**

Primary root: **present**

Bud bank

Number of buds per shoot at the soil surface (root buds excluded): **5**

Number of buds per shoot at a depth of 0–10 cm (root buds excluded): **5**

Number of buds per shoot at a depth greater than 10 cm (root buds excluded): **0**

Size of the belowground bud bank (root buds excluded): **10**

Depth of the belowground bud bank (root buds excluded) [cm]: **3**

Number of buds per shoot at the soil surface (root buds included): **5**

Number of buds per shoot at a depth of 0–10 cm (root buds included): **5**

Number of buds per shoot at a depth greater than 10 cm (root buds included): **0**

Size of the belowground bud bank (root buds included): **10**

Depth of the belowground bud bank (root buds included) [cm]: **3**

Trophic mode

Parasitism and mycoheterotrophy: **autotrophic**

Carnivory: **non-carnivorous**

Symbiotic nitrogen fixation: **no nitrogen-fixing symbionts**

Karyology

Chromosome number (2n): **14**

Ploidy level (x): **2**

2C genome size [Mbp]: **477.23**
1Cx monoploid genome size [Mbp]: **238.61**
Genomic GC content: **40.9 %**

Taxon origin

Origin in the Czech Republic: **native**

Ecological indicator values

Ellenberg-type indicator values

Light indicator value: **7 - half-light plant, mostly occurring at full light, but also in the shade up to about 30% of diffuse radiation incident in an open area**

Temperature indicator value: **6 - transition between values 5 and 7**

Moisture indicator value: **5 - indicator of fresh soils, focus on soils of average moisture, missing on wet and on soils that frequently dry out**

Reaction indicator value: **5 - indicator of moderate acidity, occurring rarely in strongly acidic as well as in neutral to alkaline conditions**

Nutrient indicator value: **4 - transition between values 3 and 5**

Salinity indicator value: **0 - not salt tolerant, glycophyte**

Indicator values for disturbance

Whole-community disturbance frequency indicator value: **-1.05**

Herb layer disturbance frequency indicator value: **-0.25**

Whole-community disturbance severity indicator value: **0.3**

Herb layer disturbance severity indicator value: **0.3**

Whole-community structure based disturbance indicator value: **0.41**

Herb layer structure-based disturbance indicator value: **0.6**



Habitat and sociology

Occurrence in habitats

6 Meadows and mesic pastures

6A Mesic Arrhenatherum meadows: **2 - optimum**

6B Montane mesic meadows: **2 - optimum**

8 Dry grasslands

8B Submediterranean dry grasslands on rock outcrops: **1 - rare occurrence**

8D Broad-leaved dry grasslands: **1 - rare occurrence**

8F Thermophilous forest fringe vegetation: **2 - optimum**

9 Sand grasslands and rock-outcrop vegetation

9E Acidophilous vegetation of spring therophytes and succulents: **1 - rare occurrence**

11 Heathlands and scrub

11L Tall mesic and xeric shrub: **1 - rare occurrence**

12 Forests

12H Peri-Alpidic basiphilous thermophilous oak forests: **1 - rare occurrence**

12I Sub-continental thermophilous oak forests: **1 - rare occurrence**

12J Acidophilous thermophilous oak forests: **1 - rare occurrence**

12K Acidophilous oak forests: **1 - rare occurrence**

Affinity to the forest environment

Affinity to the forest environment in Thermophyticum: **0 - taxon that does not spontaneously occur in Czech forests**

Affinity to the forest environment in Mesophyticum and Oreophyticum: **0 - taxon that does not spontaneously occur in Czech forests**

Diagnostic taxon

Diagnostic taxon of associations: [TDA04 *Potentillo albae-Festucetum rubrae*](#)

Constant taxon

Constant taxon of associations: [TDA04 *Potentillo albae-Festucetum rubrae*](#)

Ecological specialization indices

Ecological specialization index for all vegetation types: **5.5**

Ecological specialization index for non-forest vegetation: **6.1**

Ecological specialization index for forest vegetation: **5.3**

Colonization ability

Index of colonization success (ICS): **2**

Index of colonization potential (ICP): **3**

Optimum successional age [years]: **44**

Distribution and frequency

Floristic zone: **southern temperate, submeridional**

Floristic region: **Europe**

Continentality degree: **3**

Distribution range extension along the continentality gradient: **3**

Elevational belt in the Czech Republic: **colline belt, submontane belt**

Occurrence frequency in the basic grid mapping cells and quadrants of the basic grid mapping cells: **226**

taxon.data.freq_in_quad: **411**

Commonness in vegetation plots from the Czech Republic

Occurrence frequency in vegetation plots: **0.2 %**

Occurrence frequency in vegetation plots with a cover above 5%: **0 %**

Occurrence frequency in vegetation plots with a cover above 25%: **0 %**

Occurrence frequency in vegetation plots with a cover above 50%: **0 %**

Mean percentage cover in vegetation plots: **2 %**

Maximum percentage cover in vegetation plots: **3 %**

Number of habitats with taxon occurrence in the Czech Republic

Number of narrow habitats in which the taxon occurs: **11**

Number of narrow habitats in which the taxon has its optimum: **3**

Number of broad habitats in which the taxon occurs: **5**

Number of broad habitats in which the taxon has its optimum: **2**

Threats and protection

Red List 2017 (national categories): **taxon is not on the Red List**

Red List 2017 (IUCN categories): **LC(NA) - least concern (taxon is not on the Red List)**

Legal protection: **not protected by law**