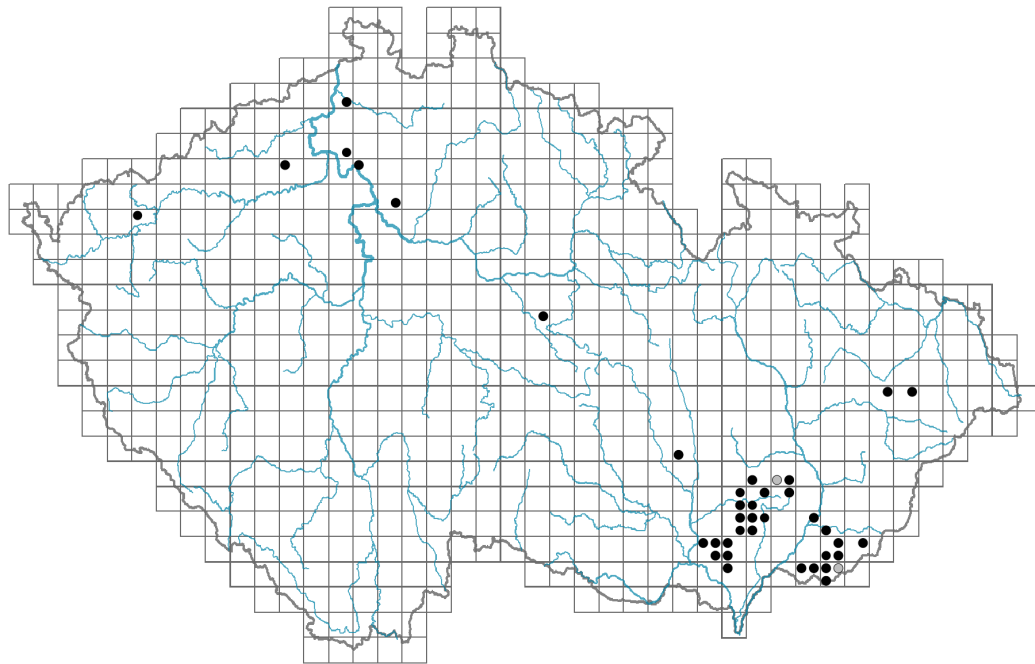


Ophrys apifera

Distribution



Map info

● revised records

● unrevised records

On the map are not visualized records without the coordinates and records marked as incorrect or doubtful.

Habitus and growth type

Height [m]: **0.15-0.35**

Growth form: **clonal herb**

Life form: **geophyte**

Life strategy: **CSR - competitor/stress-tolerator/ruderal**

Life strategy (Pierce method based on leaf traits): **CR**

Life strategy (Pierce method, C-score): **40.5 %**

Life strategy (Pierce method, S-score): **0 %**

Life strategy (Pierce method, R-score): **59.5 %**

Leaf

Leaf presence and metamorphosis: **leaves present, not modified**

Leaf arrangement (phyllotaxis): **alternate**

Leaf shape: **simple - entire**

Stipules: **absent**

Petiole: **absent**

Leaf life span: **overwintering green**

Leaf anatomy: **scleromorphic, mesomorphic**



Flower

Flowering period [month]: **May-June**

Flowering phase: **7 Ligustrum vulgare-Stachys sylvatica (end of early summer)**

Flower colour: **pink**

Flower symmetry: **zygomorphic**

Perianth type: **homochlamydeous**

Perianth fusion: **free**

Inflorescence type: **spica**

Dicliny: **synoecious**

Generative reproduction type: **autogamy**

Pollination syndrome: **selfing**

Fruit, seed and dispersal

Fruit type: **dry fruit - capsule**

Fruit colour: **green, brown**

Reproduction type: **only by seed/spores**

Dispersal unit (diaspore): **seed**

Dispersal strategy: **Lycopodium (mainly anemochory)**

Myrmecochory: **non-myrmecochorous (b)**

Belowground organs and clonality

Root metamorphosis: **root tuber**

Storage organ: **root tuber**

Type of clonal growth organ: **root tuber**

Freely dispersible organs of clonal growth: **absent**

Shoot life span (cyclicality): **monocyclic shoots prevailing**

Branching type of stem-derived organs of clonal growth: **sympodial**

Primary root: **absent**

Persistence of the clonal growth organ [year]: **1**

Number of clonal offspring: **1**

Lateral spreading distance by clonal growth [m]: **0.01**

Clonal index: **3**

Bud bank

Number of buds per shoot at the soil surface (root buds excluded): **3**

Number of buds per shoot at a depth of 0-10 cm (root buds excluded): **5**

Number of buds per shoot at a depth greater than 10 cm (root buds excluded): **0**

Size of the belowground bud bank (root buds excluded): **8**

Depth of the belowground bud bank (root buds excluded) [cm]: **4**

Number of buds per shoot at the soil surface (root buds included): **3**

Number of buds per shoot at a depth of 0-10 cm (root buds included): **5**

Number of buds per shoot at a depth greater than 10 cm (root buds included): **0**

Size of the belowground bud bank (root buds included): **8**

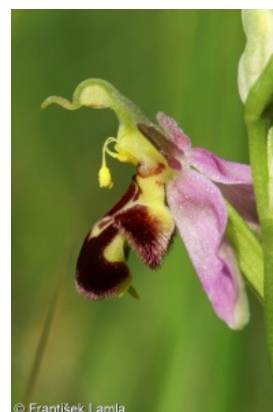
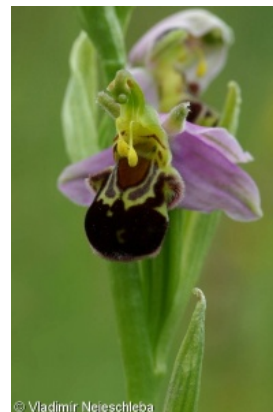
Depth of the belowground bud bank (root buds included) [cm]: **4**

Trophic mode

Parasitism and mycoheterotrophy: **partial or initial mycoheterotroph**

Carnivory: **non-carnivorous**

Symbiotic nitrogen fixation: **no nitrogen-fixing symbionts**



Karyology

Chromosome number (2n): **36**

Ploidy level (x): **2**

2C genome size [Mbp]: **10383.94**

1Cx monoploid genome size [Mbp]: **5191.97**

Genomic GC content: **44.9 %**

Taxon origin

Origin in the Czech Republic: **native**

Ecological indicator values

Ellenberg-type indicator values

Light indicator value: **7 - half-light plant, mostly occurring at full light, but also in the shade up to about 30% of diffuse radiation incident in an open area**

Temperature indicator value: **6 - transition between values 5 and 7**

Moisture indicator value: **4 - transition between values 3 and 5**

Reaction indicator value: **8 - transition between values 7 and 9, occurring mostly in calcium-rich conditions**

Nutrient indicator value: **3 - occurring at nutrient-poor sites more frequently than at average sites and exceptionally at rich sites**

Salinity indicator value: **0 - not salt tolerant, glycophyte**

Habitat and sociology

Occurrence in habitats

8 Dry grasslands

8C Narrow-leaved sub-continental steppes: **1 - rare occurrence**

8D Broad-leaved dry grasslands: **2 - optimum**

8F Thermophilous forest fringe vegetation: **1 - rare occurrence**

11 Heathlands and scrub

11L Tall mesic and xeric shrub: **1 - rare occurrence**

Affinity to the forest environment

Affinity to the forest environment in Thermophyticum: **0 - taxon that does not spontaneously occur in Czech forests**

Affinity to the forest environment in Mesophyticum and Oreophyticum: **0 - taxon that does not spontaneously occur in Czech forests**

Colonization ability

Index of colonization success (ICS): **1**

Distribution and frequency

Floristic zone: **northern temperate, southern temperate, submeridional, meridional**

Floristic region: **Europe**

Distribution range extension along the continentality gradient: **5**

Elevational belt in the Czech Republic: **colline belt, submontane belt**

Occurrence frequency in the basic grid mapping cells and quadrants of the basic grid

mapping cells: 26

taxon.data.freq_in_quad: 40

Commonness in vegetation plots from the Czech Republic

Occurrence frequency in vegetation plots: **0 %**

Occurrence frequency in vegetation plots with a cover above 5%: **0 %**

Occurrence frequency in vegetation plots with a cover above 25%: **0 %**

Occurrence frequency in vegetation plots with a cover above 50%: **0 %**

Mean percentage cover in vegetation plots: **1 %**

Maximum percentage cover in vegetation plots: **1 %**

Number of habitats with taxon occurrence in the Czech Republic

Number of narrow habitats in which the taxon occurs: **4**

Number of narrow habitats in which the taxon has its optimum: **1**

Number of broad habitats in which the taxon occurs: **2**

Number of broad habitats in which the taxon has its optimum: **1**

Threats and protection

Red List 2017 (national categories): **C1r - critically threatened taxon, rare**

Red List 2017 (IUCN categories): **EN - endangered**

Legal protection: **critically threatened taxon**