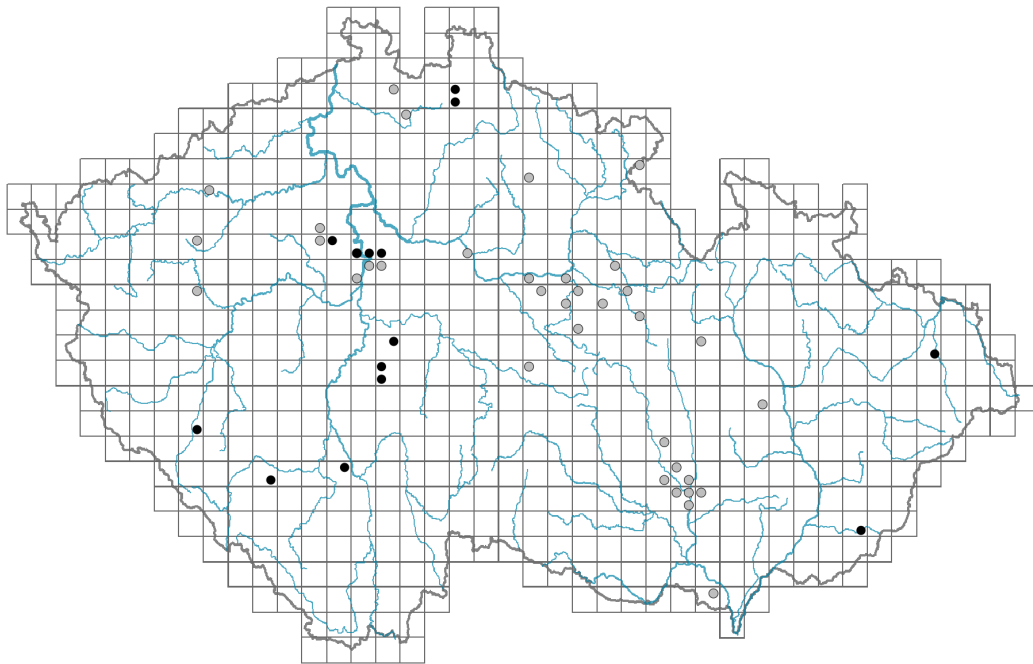


Parthenocissus tricuspidata

Distribution

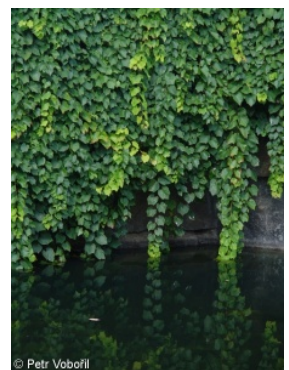


Map info

● revised records

● unrevised records

On the map are not visualized records without the coordinates and records marked as incorrect or doubtful.



Habitus and growth type

Height [m]: **5-20**

Growth form: **woody liana**

Life form: **macrophanerophyte**

Life strategy (Pierce method based on leaf traits): **C/CSR**

Life strategy (Pierce method, C-score): **55.2 %**

Life strategy (Pierce method, S-score): **31.4 %**

Life strategy (Pierce method, R-score): **13.4 %**



Leaf

Leaf presence and metamorphosis: **leaves present, not modified**

Leaf arrangement (phyllotaxis): **alternate**

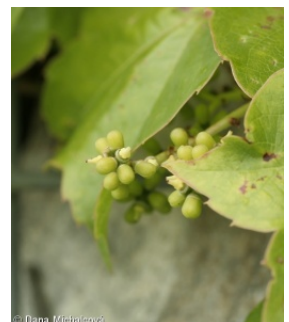
Leaf shape: **simple - palmately divided**

Stipules: **absent**

Petiole: **present**

Leaf deciduousness in woody plants: **winter deciduous**

Functional leaf type in woody plants: **broad deciduous or semi-deciduous**



Flower

Flowering period [month]: **June-July**

Flower colour: **yellow-green**

Perianth type: **reduced**
 Perianth fusion: **reduced**
 Calyx fusion: **synsepalous**
 Inflorescence type: **panicula**

Fruit, seed and dispersal

Fruit type: **fleshy fruit - berry**
 Fruit colour: **blue, black**
 Myrmecochory: **non-myrmecochorous (b)**

Trophic mode

Parasitism and mycoheterotrophy: **autotrophic**
 Carnivory: **non-carnivorous**
 Symbiotic nitrogen fixation: **no nitrogen-fixing symbionts**

Taxon origin

Origin in the Czech Republic: **neophyte**
 Invasion status: **casual**
 Geographic origin: **Asia**
 Year of the first record in the wild: **2021**
 Period of introduction: **Present (after 2000)**
 Introduction pathway: **intentional - ornamental**

Ecological indicator values

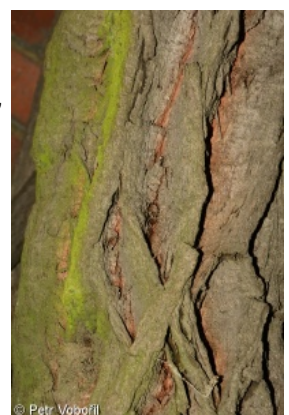
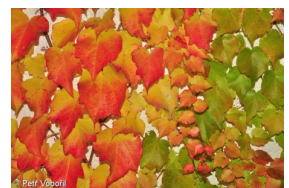
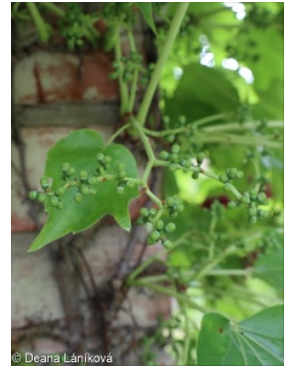
Ellenberg-type indicator values

Light indicator value: **7 - half-light plant, mostly occurring at full light, but also in the shade up to about 30% of diffuse radiation incident in an open area**
 Temperature indicator value: **6 - transition between values 5 and 7**
 Moisture indicator value: **5 - indicator of fresh soils, focus on soils of average moisture, missing on wet and on soils that frequently dry out**
 Reaction indicator value: **7 - indicator of slightly acidic to slightly basic conditions, never occurring in very acidic conditions**
 Nutrient indicator value: **7 - occurring at nutrient-rich sites more often than at average sites and only exceptionally at poor sites**
 Salinity indicator value: **0 - not salt tolerant, glycophyte**

Habitat and sociology

Affinity to the forest environment

Affinity to the forest environment in Thermophyticum: **0 - taxon that does not spontaneously occur in Czech forests**
 Affinity to the forest environment in Mesophyticum and Oreophyticum: **0 - taxon that does not spontaneously occur in Czech forests**



Distribution and frequency

Occurrence frequency in the basic grid mapping cells and quadrants of the basic grid mapping cells: 42

taxon.data.freq_in_quad: 49

Commonness in vegetation plots from the Czech Republic

Occurrence frequency in vegetation plots: **0 %**

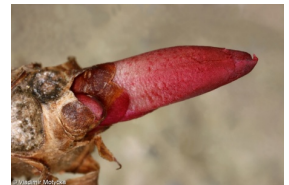
Occurrence frequency in vegetation plots with a cover above 5%: **0 %**

Occurrence frequency in vegetation plots with a cover above 25%: **0 %**

Occurrence frequency in vegetation plots with a cover above 50%: **0 %**

Mean percentage cover in vegetation plots: **3 %**

Maximum percentage cover in vegetation plots: **3 %**



Threats and protection

Red List 2017 (national categories): **taxon is not on the Red List**

Red List 2017 (IUCN categories): **LC(NA) - least concern (taxon is not on the Red List)**

Legal protection: **not protected by law**