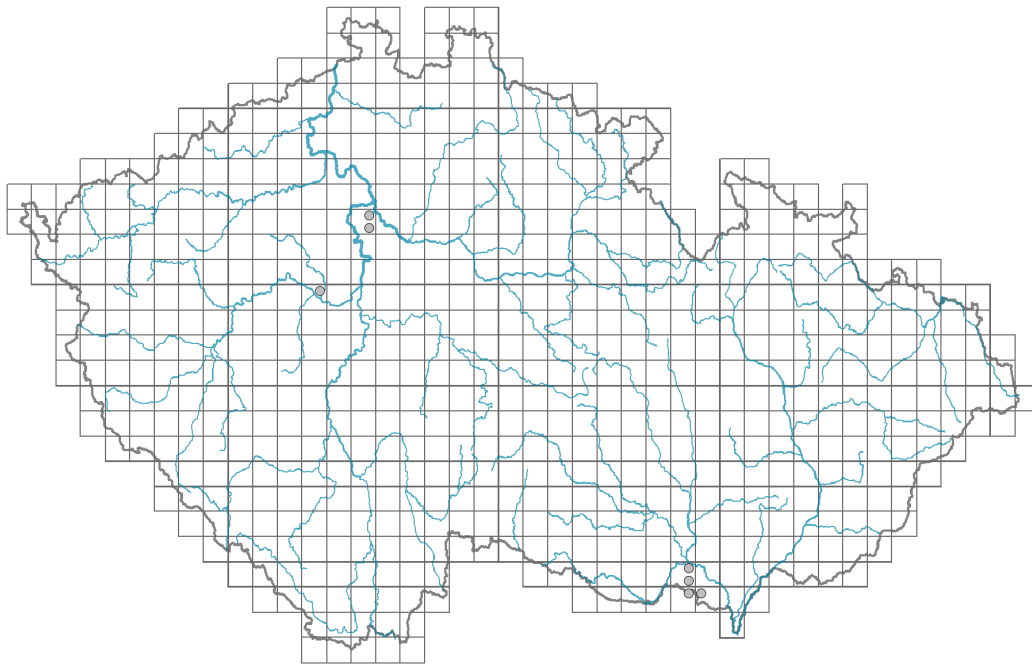


# *Poa badensis*

## Distribution



© Radim Cibulka

### Map info

● revised records

○ unrevised records

On the map are not visualized records without the coordinates and records marked as incorrect or doubtful.

## Habitus and growth type

Height [m]: **0.1-0.35**

Growth form: **clonal herb**

Life form: **hemicryptophyte**

Life strategy: **CSR - competitor/stress-tolerator/ruderal**

## Leaf

Leaf presence and metamorphosis: **leaves present, not modified**

Leaf arrangement (phyllotaxis): **alternate**

Leaf shape: **simple - entire**

Stipules: **absent**

Petiole: **absent**

Leaf life span: **evergreen**

Leaf anatomy: **scleromorphic**

## Flower

Flowering period [month]: **May-July**

Flowering phase: **6 Cornus sanguinea-Melica uniflora (start of early summer)**

Flower colour: **green**

Perianth type: **reduced**

Perianth fusion: **reduced**



© Dana Michalcová



© Miroslav Čížek



© Dana Michalcová

Inflorescence type: **panicula e spiculis composita**

Dicliny: **synoecious**

Pollination syndrome: **wind-pollination**

## Fruit, seed and dispersal

Fruit type: **dry fruit - caryopsis**

Fruit colour: **brown**

Reproduction type: **only by seed/spores**

Dispersal unit (diaspore): **fruit, infrutescence or its part**

Dispersal strategy: **Allium (mainly autochory)**

Myrmecochory: **non-myrmecochorous (a)**

## Belowground organs and clonality

Storage organ: **tuft**

Type of clonal growth organ: **epigeogenous rhizome**

Freely dispersible organs of clonal growth: **absent**

Shoot life span (cyclicality): **dicyclic or polycyclic shoots prevailing**

Branching type of stem-derived organs of clonal growth: **sympodial**

Primary root: **absent**

Persistence of the clonal growth organ [year]: **4**

Number of clonal offspring: **6**

Lateral spreading distance by clonal growth [m]: **0.01**

Clonal index: **4**

## Bud bank

Number of buds per shoot at the soil surface (root buds excluded): **5**

Number of buds per shoot at a depth of 0–10 cm (root buds excluded): **8**

Number of buds per shoot at a depth greater than 10 cm (root buds excluded): **0**

Size of the belowground bud bank (root buds excluded): **13**

Depth of the belowground bud bank (root buds excluded) [cm]: **4**

Number of buds per shoot at the soil surface (root buds included): **5**

Number of buds per shoot at a depth of 0–10 cm (root buds included): **8**

Number of buds per shoot at a depth greater than 10 cm (root buds included): **0**

Size of the belowground bud bank (root buds included): **13**

Depth of the belowground bud bank (root buds included) [cm]: **4**

## Trophic mode

Parasitism and mycoheterotrophy: **autotrophic**

Carnivory: **non-carnivorous**

Symbiotic nitrogen fixation: **no nitrogen-fixing symbionts**

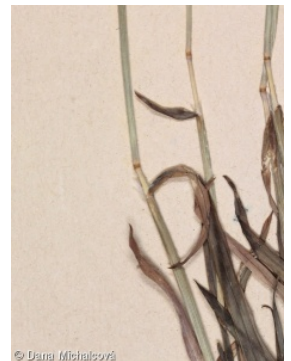
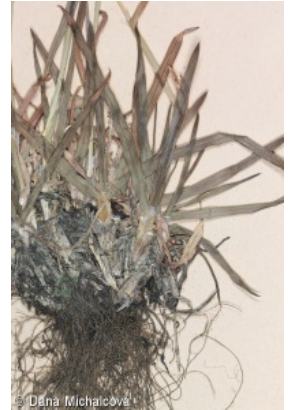
## Karyology

Chromosome number (2n): **14 (28)**

Ploidy level (x): **2 (4)**

2C genome size [Mbp]: **2427.93**

1Cx monoploid genome size [Mbp]: **1213.96**



Genomic GC content: **46.1 %**

## Taxon origin

Origin in the Czech Republic: **native**

## Ecological indicator values

Ellenberg-type indicator values

Light indicator value: **9 - full light plant, occurring only in fully irradiated places, not at less than 50% of diffuse radiation incident in an open area**

Temperature indicator value: **7 - heat indicator, occurring in relatively warm lowlands**

Moisture indicator value: **2 - transition between values 1 and 3**

Reaction indicator value: **9 - base and lime indicator, always occurring in calcium-rich conditions**

Nutrient indicator value: **2 - transition between values 1 and 3**

Salinity indicator value: **0 - not salt tolerant, glycophyte**

## Habitat and sociology

Occurrence in habitats

8 Dry grasslands

8B Submediterranean dry grasslands on rock outcrops: **2 - optimum**

8C Narrow-leaved sub-continental steppes: **1 - rare occurrence**

9 Sand grasslands and rock-outcrop vegetation

9F Basiphilous vegetation of spring therophytes and succulents: **2 - optimum**

Affinity to the forest environment

Affinity to the forest environment in Thermophyticum: **0 - taxon that does not spontaneously occur in Czech forests**

Affinity to the forest environment in Mesophyticum and Oreophyticum: **0 - taxon that does not spontaneously occur in Czech forests**

Diagnostic taxon

Diagnostic taxon of alliances: [THB Bromo pannonici-Festucion pallentis](#)

Diagnostic taxon of associations: [THB01 Poo badensis-Festucetum pallentis](#), [THC02 Minuartio setaceae-Seslerietum caeruleae](#)

Constant taxon

Constant taxon of alliances: [THB Bromo pannonici-Festucion pallentis](#)

Constant taxon of associations: [THB01 Poo badensis-Festucetum pallentis](#), [THC02 Minuartio setaceae-Seslerietum caeruleae](#)

Ecological specialization indices

Ecological specialization index for all vegetation types: **6.2**

Ecological specialization index for non-forest vegetation: **6.1**

Colonization ability

Index of colonization success (ICS): **1**

## Distribution and frequency

Floristic zone: **southern temperate, submeridional**

Floristic region: **Europe**

Continentality degree: **5**

Distribution range extension along the continentality gradient: **3**

Elevational belt in the Czech Republic: **colline belt**

Occurrence frequency in the basic grid mapping cells and quadrants of the basic grid mapping cells: 10

taxon.data.freq\_in\_quad: 12

Commonness in vegetation plots from the Czech Republic

Occurrence frequency in vegetation plots: **0 %**

Occurrence frequency in vegetation plots with a cover above 5%: **21.4 %**

Occurrence frequency in vegetation plots with a cover above 25%: **0 %**

Occurrence frequency in vegetation plots with a cover above 50%: **0 %**

Mean percentage cover in vegetation plots: **5.8 %**

Maximum percentage cover in vegetation plots: **23 %**

Number of habitats with taxon occurrence in the Czech Republic

Number of narrow habitats in which the taxon occurs: **3**

Number of narrow habitats in which the taxon has its optimum: **2**

Number of broad habitats in which the taxon occurs: **2**

Number of broad habitats in which the taxon has its optimum: **2**

## Threats and protection

Red List 2017 (national categories): **C2r - endangered taxon, rare**

Red List 2017 (IUCN categories): **VU - vulnerable**

Legal protection: **not protected by law**