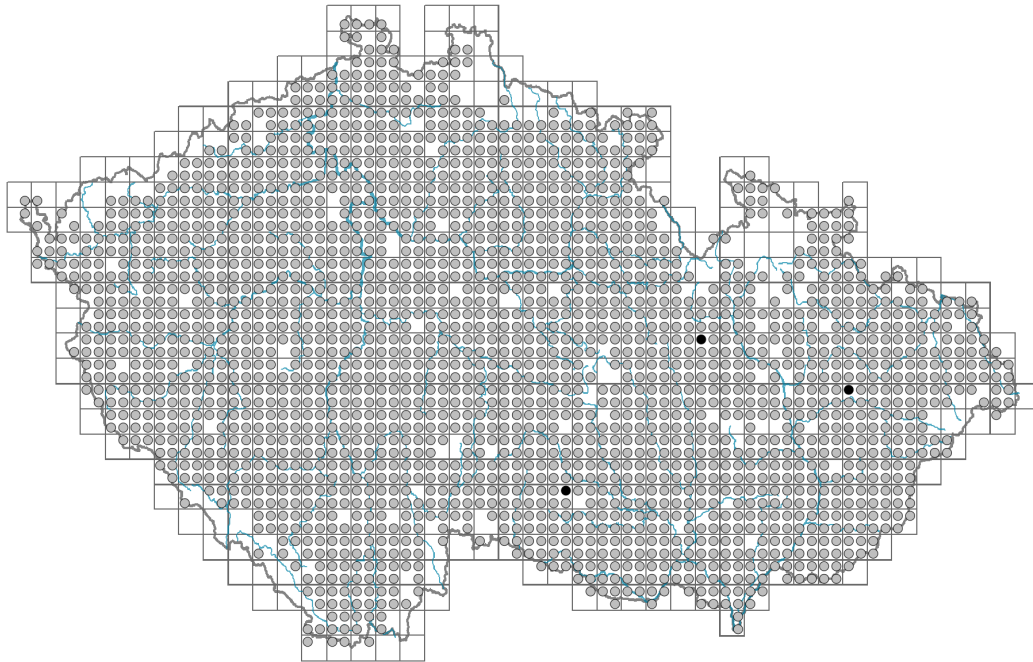


Prunus spinosa

Distribution



© Pavel Veselý

Map info

● revised records

● unrevised records

On the map are not visualized records without the coordinates and records marked as incorrect or doubtful.

Habitus and growth type

Height [m]: **0.5-3**

Growth form: **shrub**

Life form: **nanophanerophyte**

Life strategy: **C - competitor**

Life strategy (Pierce method based on leaf traits): **S/CSR**

Life strategy (Pierce method, C-score): **18.2 %**

Life strategy (Pierce method, S-score): **64.2 %**

Life strategy (Pierce method, R-score): **17.7 %**



© Pavel Veselý

Leaf

Leaf presence and metamorphosis: **leaves present, not modified**

Leaf arrangement (phyllotaxis): **alternate**

Leaf shape: **simple - entire**

Stipules: **present**

Petiole: **present**

Leaf life span: **summer green**

Leaf deciduousness in woody plants: **winter deciduous**

Leaf anatomy: **scleromorphic, mesomorphic**

Functional leaf type in woody plants: **broad deciduous or semi-deciduous**

Flower

Flowering period [month]: **March-May**

Flowering phase: **3 Prunus avium-Ranunculus auricomus (end of early spring)**

Flower colour: **white**

Flower symmetry: **actinomorphic**

Perianth type: **calyx and corolla**

Perianth fusion: **free**

Calyx fusion: **aposepalous**

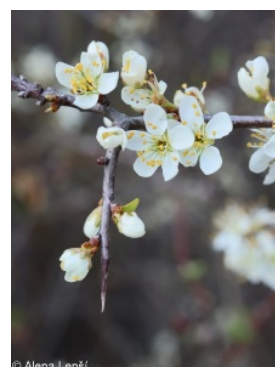
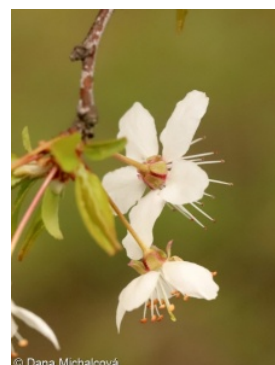
Inflorescence type: **flores solitarii**

Dicliny: **synoecious**

Generative reproduction type: **facultative allogamy**

Pollination syndrome: **insect-pollination, selfing**

Pollinator spectrum: **flies s. l., other pollinators (bumblebees, solitary bees, hoverflies, meat flies s. l., other Diptera)**



Fruit, seed and dispersal

Fruit type: **fleshy fruit - drupe**

Fruit colour: **violet, blue, black**

Reproduction type: **by seed/spores and vegetatively**

Dispersal unit (diaspore): **seed, fruit, infructescence or its part**

Dispersal strategy: **Cornus (mainly autochory and endozoochory)**

Myrmecochory: **non-myrmecochorous (b)**

Belowground organs and clonality

Shoot metamorphosis: **shoot thorn**

Root metamorphosis: **root shoot**

Primary root: **absent**

Position of root buds: **lateral roots**

Role of root buds in life-history of a plant: **additive**

Bud bank

Number of buds per shoot at the soil surface (root buds excluded): **0**

Number of buds per shoot at a depth of 0-10 cm (root buds excluded): **0**

Number of buds per shoot at a depth greater than 10 cm (root buds excluded): **0**

Size of the belowground bud bank (root buds excluded): **0**

Number of buds per shoot at the soil surface (root buds included): **0**

Number of buds per shoot at a depth of 0-10 cm (root buds included): **15**

Number of buds per shoot at a depth greater than 10 cm (root buds included): **15**

Size of the belowground bud bank (root buds included): **30**

Depth of the belowground bud bank (root buds included) [cm]: **10**

Trophic mode

Parasitism and mycoheterotrophy: **autotrophic**

Carnivory: **non-carnivorous**

Symbiotic nitrogen fixation: **no nitrogen-fixing symbionts**

Karyology

Chromosome number (2n): **32**

Ploidy level (x): **4**

2C genome size [Mbp]: **1746.14**

1Cx monoploid genome size [Mbp]: **436.54**

Genomic GC content: **40.2 %**

Taxon origin

Origin in the Czech Republic: **native**

Ecological indicator values

Ellenberg-type indicator values

Light indicator value: **7 - half-light plant, mostly occurring at full light, but also in the shade up to about 30% of diffuse radiation incident in an open area**

Temperature indicator value: **6 - transition between values 5 and 7**

Moisture indicator value: **4 - transition between values 3 and 5**

Reaction indicator value: **7 - indicator of slightly acidic to slightly basic conditions, never occurring in very acidic conditions**

Nutrient indicator value: **5x - occurring at moderately nutrient-rich sites, and less frequently at poor and rich sites (generalist)**

Salinity indicator value: **0 - not salt tolerant, glycophyte**

Indicator values for disturbance

Whole-community disturbance frequency indicator value: **-1.54**

Herb layer disturbance frequency indicator value: **-1.09**

Whole-community disturbance severity indicator value: **0.24**

Herb layer disturbance severity indicator value: **0.16**

Whole-community structure based disturbance indicator value: **0.19**

Herb layer structure-based disturbance indicator value: **0.27**

Habitat and sociology

Occurrence in habitats

6 Meadows and mesic pastures

6A Mesic Arrhenatherum meadows: **1 - rare occurrence**

7 Acidophilous grasslands

7B Submontane Nardus grasslands: **1 - rare occurrence**

8 Dry grasslands

8B Submediterranean dry grasslands on rock outcrops: **1 - rare occurrence**

8C Narrow-leaved sub-continental steppes: **1 - rare occurrence**

8D Broad-leaved dry grasslands: **1 - rare occurrence**

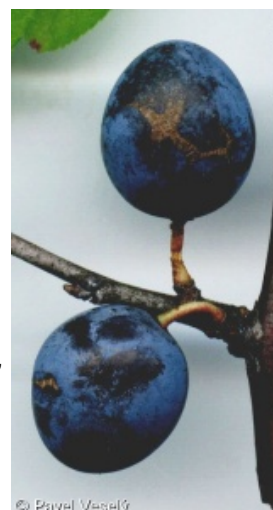
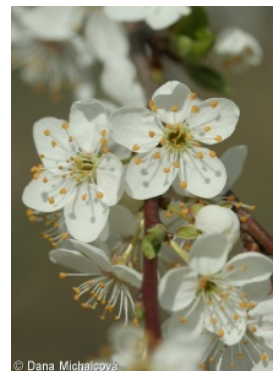
8E Acidophilous dry grasslands: **1 - rare occurrence**

8F Thermophilous forest fringe vegetation: **2 - optimum**

11 Heathlands and scrub

11A Dry lowland to subalpine heathlands: **1 - rare occurrence**

11L Tall mesic and xeric shrub: **4 - constant dominant**



11N Low xeric scrub: **3 - dominant**

11R Scrub and pioneer woodland of forests clearings: **1 - rare occurrence**

12 Forests

12B Alluvial forests: **1 - rare occurrence**

12C Oak-hornbeam forests: **1 - rare occurrence**

12D Ravine forests: **1 - rare occurrence**

12F Limestone beech forests: **1 - rare occurrence**

12H Peri-Alpidic basiphilous thermophilous oak forests: **2 - optimum**

12I Sub-continental thermophilous oak forests: **2 - optimum**

12J Acidophilous thermophilous oak forests: **2 - optimum**

12K Acidophilous oak forests: **1 - rare occurrence**

12O Peri-Alpidic pine forests: **1 - rare occurrence**

12T Robinia pseudacacia plantations: **2 - optimum**

12U Plantations of broad-leaved non-native trees: **1 - rare occurrence**

12W Pine and larch plantations: **2 - optimum**

13 Anthropogenic vegetation

13D Perennial thermophilous ruderal vegetation: **1 - rare occurrence**

13F Herbaceous vegetation of forests clearings and Rubus scrub: **1 - rare occurrence**

Affinity to the forest environment

Affinity to the forest environment in Thermophyticum: **2.1 - taxon occurring both in the forest and open vegetation**

Affinity to the forest environment in Mesophyticum and Oreophyticum: **2.1 - taxon occurring both in the forest and open vegetation**

Diagnostic taxon

Diagnostic taxon of classes: [KB *Rhamno-Prunetea*](#)

Diagnostic taxon of alliances: [KBB *Berberidion vulgaris*](#)

Diagnostic taxon of associations: [KBB04 *Pruno spinosae-Ligustretum vulgaris*](#), [KBB05 *Rhamno catharticae-Cornetum sanguineae*](#), [KBB06 *Carpino betuli-Prunetum spinosae*](#), [LCA02 *Lithospermo purpureocaerulei-Quercetum pubescentis*](#)

Constant taxon

Constant taxon of alliances: [KBB *Berberidion vulgaris*](#)

Constant taxon of associations: [KBB04 *Pruno spinosae-Ligustretum vulgaris*](#), [KBB05 *Rhamno catharticae-Cornetum sanguineae*](#), [KBB06 *Carpino betuli-Prunetum spinosae*](#), [LCA02 *Lithospermo purpureocaerulei-Quercetum pubescentis*](#)

Dominant taxon

Dominant taxon of associations: [KBB04 *Pruno spinosae-Ligustretum vulgaris*](#), [KBB05 *Rhamno catharticae-Cornetum sanguineae*](#), [KBB06 *Carpino betuli-Prunetum spinosae*](#)

Ecological specialization indices

Ecological specialization index for all vegetation types: **3.7**

Ecological specialization index for non-forest vegetation: **3.7**

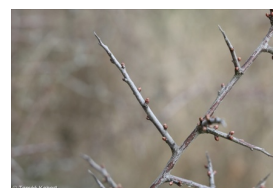
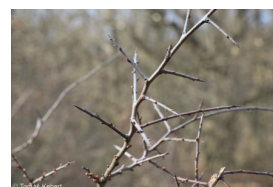
Ecological specialization index for forest vegetation: **4.3**

Colonization ability

Index of colonization success (ICS): **8**

Index of colonization potential (ICP): **8**

Optimum successional age [years]: **75**



Distribution and frequency

Floristic zone: **northern temperate, southern temperate, submeridional, meridional**

Floristic region: **Europe**

Distribution range extension along the continentality gradient: **6**

Elevational belt in the Czech Republic: **lowlands, colline belt, submontane belt**

Occurrence frequency in the basic grid mapping cells and quadrants of the basic grid mapping cells: **622**

taxon.data.freq_in_quad: 2181

Commonness in vegetation plots from the Czech Republic

Occurrence frequency in vegetation plots: **1.1 %**

Occurrence frequency in vegetation plots with a cover above 5%: **42.6 %**

Occurrence frequency in vegetation plots with a cover above 25%: **28.3 %**

Occurrence frequency in vegetation plots with a cover above 50%: **17.5 %**

Mean percentage cover in vegetation plots: **20.9 %**

Maximum percentage cover in vegetation plots: **99 %**

Number of habitats with taxon occurrence in the Czech Republic

Number of narrow habitats in which the taxon occurs: **25**

Number of narrow habitats in which the taxon has its optimum: **8**

Number of broad habitats in which the taxon occurs: **6**

Number of broad habitats in which the taxon has its optimum: **3**



Threats and protection

Red List 2017 (national categories): **taxon is not on the Red List**

Red List 2017 (IUCN categories): **LC(NA) - least concern (taxon is not on the Red List)**

Legal protection: **not protected by law**