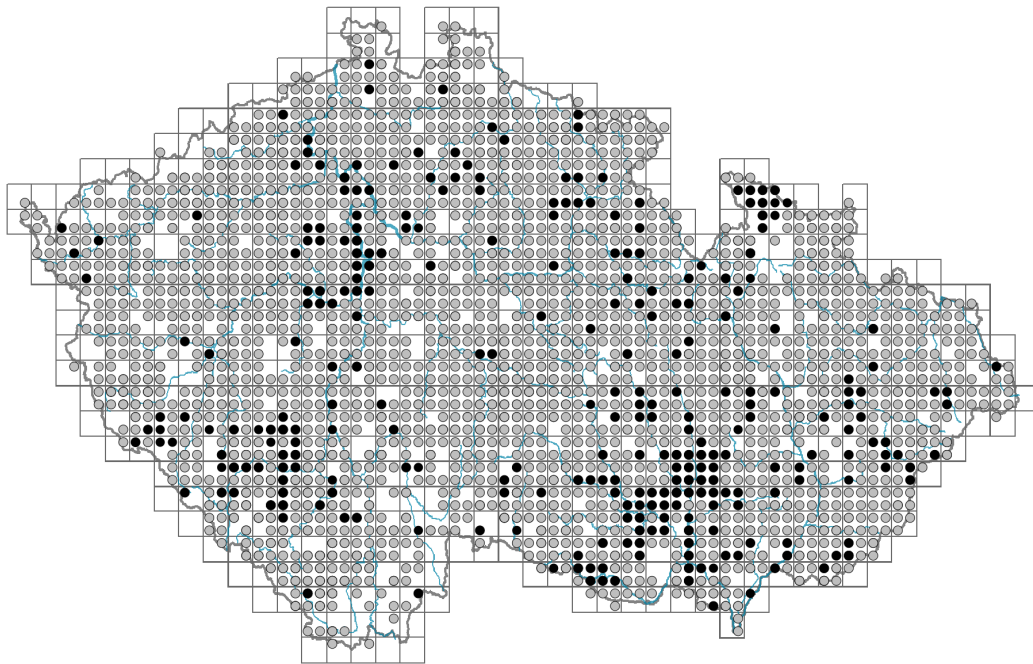


Rosa canina

Distribution



Map info

● revised records

● unrevised records

On the map are not visualized records without the coordinates and records marked as incorrect or doubtful.



Habitus and growth type

Height [m]:

Growth form: **shrub**

Life form: **nanophanerophyte**

Life strategy (Pierce method based on leaf traits): **SR/CSR**

Life strategy (Pierce method, C-score): **16.6 %**

Life strategy (Pierce method, S-score): **50.2 %**

Life strategy (Pierce method, R-score): **33.2 %**

Leaf

Leaf presence and metamorphosis: **leaves present, not modified**

Leaf arrangement (phyllotaxis): **alternate**

Leaf shape: **compound - imparipinnate**

Stipules: **present**

Petiole: **present**

Leaf life span: **summer green**

Leaf deciduousness in woody plants: **winter deciduous**

Leaf anatomy: **mesomorphic**

Functional leaf type in woody plants: **broad deciduous or semi-deciduous**



Flower

Flowering period [month]: **June-July**

Flower colour: **white, pink**

Flower symmetry: **actinomorphic**

Perianth type: **calyx and corolla**

Perianth fusion: **free**

Calyx fusion: **aposepalous**

Inflorescence type: **corymbus**

Generative reproduction type: **facultative autogamy**

Pollination syndrome: **insect-pollination, selfing**



Fruit, seed and dispersal

Fruit type: **fleshy fruit - hip**

Fruit colour: **red**

Reproduction type: **only by seed/spores**

Dispersal unit (diaspore): **seed, fruit, infrutescence or its part**

Dispersal strategy: **Cornus (mainly autochory and endozoochory)**

Myrmecochory: **non-myrmecochorous (b)**



Trophic mode

Parasitism and mycoheterotrophy: **autotrophic**

Carnivory: **non-carnivorous**

Symbiotic nitrogen fixation: **no nitrogen-fixing symbionts**



Taxon origin

Origin in the Czech Republic: **native**

Ecological indicator values

Ellenberg-type indicator values

Light indicator value: **7x - half-light plant, mostly occurring at full light, but also in the shade up to about 30% of diffuse radiation incident in an open area (generalist)**

Temperature indicator value: **5 - moderate heat indicator, occurring from lowland to montane belt, mainly in submontane-temperate areas**

Moisture indicator value: **4 - transition between values 3 and 5**

Reaction indicator value: **7x - indicator of slightly acidic to slightly basic conditions, never occurring in very acidic conditions (generalist)**

Nutrient indicator value: **4x - transition between values 3 and 5 (generalist)**

Salinity indicator value: **0 - not salt tolerant, glycophyte**



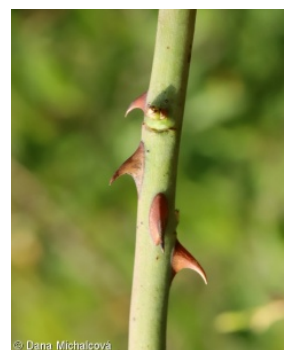
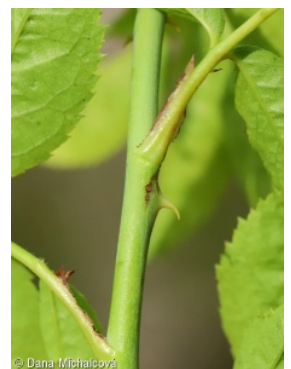
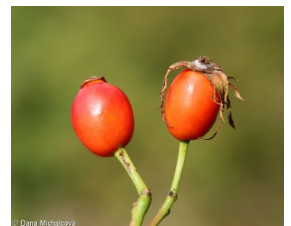
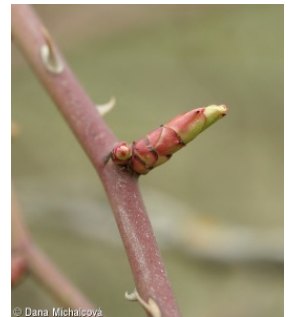
Habitat and sociology

Occurrence in habitats

1 Vegetation of cliffs, screes and walls



- 1A Calcareous cliffs: **1 - rare occurrence**
- 1B Siliceous cliffs and block fields: **1 - rare occurrence**
- 1D Mobile calcareous screes: **1 - rare occurrence**
- 6 Meadows and mesic pastures
- 6A Mesic Arrhenatherum meadows: **1 - rare occurrence**
- 7 Acidophilous grasslands
- 7B Submontane Nardus grasslands: **1 - rare occurrence**
- 8 Dry grasslands
- 8A Hercynian dry grasslands on rock outcrops: **1 - rare occurrence**
- 8B Submediterranean dry grasslands on rock outcrops: **1 - rare occurrence**
- 8C Narrow-leaved sub-continental steppes: **1 - rare occurrence**
- 8D Broad-leaved dry grasslands: **1 - rare occurrence**
- 8E Acidophilous dry grasslands: **1 - rare occurrence**
- 8F Thermophilous forest fringe vegetation: **2 - optimum**
- 9 Sand grasslands and rock-outcrop vegetation
- 9C Festuca grasslands on acidic sands: **1 - rare occurrence**
- 11 Heathlands and scrub
- 11A Dry lowland to subalpine heathlands: **1 - rare occurrence**
- 11J Willow galleries of loamy and sandy river banks: **1 - rare occurrence**
- 11L Tall mesic and xeric shrub: **4 - constant dominant**
- 11N Low xeric scrub: **2 - optimum**
- 11R Scrub and pioneer woodland of forests clearings: **1 - rare occurrence**
- 12 Forests
- 12A Alder carrs: **1 - rare occurrence**
- 12B Alluvial forests: **1 - rare occurrence**
- 12C Oak-hornbeam forests: **1 - rare occurrence**
- 12D Ravine forests: **1 - rare occurrence**
- 12F Limestone beech forests: **1 - rare occurrence**
- 12H Peri-Alpidic basiphilous thermophilous oak forests: **2 - optimum**
- 12I Sub-continental thermophilous oak forests: **2 - optimum**
- 12J Acidophilous thermophilous oak forests: **2 - optimum**
- 12K Acidophilous oak forests: **1 - rare occurrence**
- 12L Boreo-continental pine forests: **1 - rare occurrence**
- 12O Peri-Alpidic pine forests: **2 - optimum**
- 12T Robinia pseudacacia plantations: **1 - rare occurrence**
- 12U Plantations of broad-leaved non-native trees: **1 - rare occurrence**
- 12W Pine and larch plantations: **2 - optimum**
- 13 Anthropogenic vegetation
- 13D Perennial thermophilous ruderal vegetation: **1 - rare occurrence**
- 13F Herbaceous vegetation of forests clearings and Rubus scrub: **1 - rare occurrence**
- Affinity to the forest environment
- Affinity to the forest environment in Thermophyticum: **2.1 - taxon occurring both in the forest and open vegetation**
- Affinity to the forest environment in Mesophyticum and Oreophyticum: **2.1 - taxon occurring both in the forest and open vegetation**



Distribution and frequency

Distribution range extension along the continentality gradient: **6**

Elevational belt in the Czech Republic: **lowlands, colline belt, submontane belt, montane belt**

Occurrence frequency in the basic grid mapping cells and quadrants of the basic grid mapping cells: **639**

taxon.data.freq_in_quad: **2157**

Number of habitats with taxon occurrence in the Czech Republic

Number of narrow habitats in which the taxon occurs: **33**

Number of narrow habitats in which the taxon has its optimum: **8**

Number of broad habitats in which the taxon occurs: **8**

Number of broad habitats in which the taxon has its optimum: **3**

Threats and protection

Red List 2017 (national categories): **taxon is not on the Red List**

Red List 2017 (IUCN categories): **LC(NA) - least concern (taxon is not on the Red List)**

Legal protection: **not protected by law**