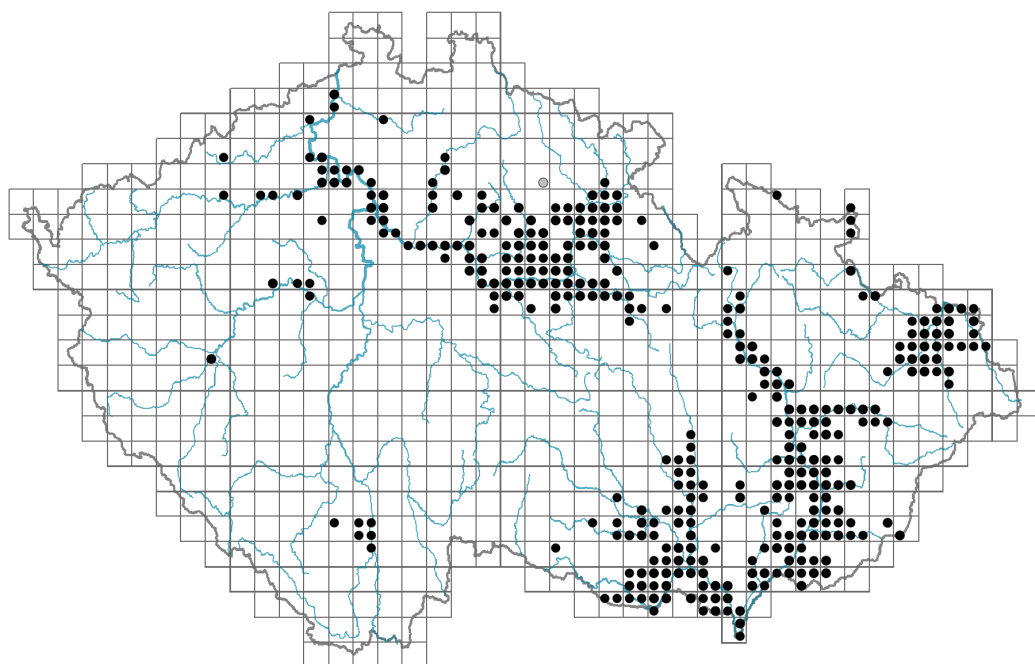


# *Silene baccifera*

## Distribution



### Map info

● revised records

○ unrevised records

On the map are not visualized records without the coordinates and records marked as incorrect or doubtful.

## Habitus and growth type

Height [m]: **0.5-2**

Growth form: **polycarpic perennial non-clonal herb**

Life form: **geophyte**



## Leaf

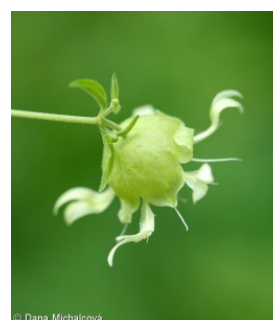
Leaf presence and metamorphosis: **leaves present, not modified**

Leaf arrangement (phyllotaxis): **opposite**

Leaf shape: **simple - entire**

Stipules: **absent**

Petiole: **both present and absent**



## Flower

Flowering period [month]: **June-August**

Flower colour: **green-white**

Flower symmetry: **actinomorphic**

Perianth type: **calyx and corolla**

Perianth fusion: **free**

Calyx fusion: **synsepalous**

Inflorescence type: **panicula e dichasiis composita**

Generative reproduction type: **facultative allogamy**



## Fruit, seed and dispersal

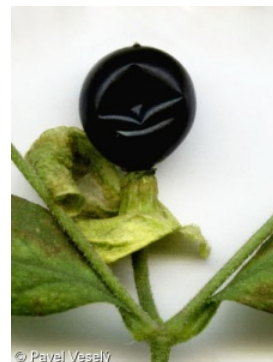
Fruit type: **fleshy fruit - berry**

Fruit colour: **black**

Dispersal unit (diaspore): **seed, fruit, infrutescence or its part**

Dispersal strategy: **Cornus (mainly autochory and endozoochory)**

Myrmecochory: **probably non-myrmecochorous**



## Belowground organs and clonality

Shoot life span (cyclicity): **monocyclic shoots prevailing**

Branching type of stem-derived organs of clonal growth: **sympodial**

Primary root: **present**

Bud bank

Number of buds per shoot at the soil surface (root buds excluded): **5**

Number of buds per shoot at a depth of 0–10 cm (root buds excluded): **15**

Number of buds per shoot at a depth greater than 10 cm (root buds excluded): **0**

Size of the belowground bud bank (root buds excluded): **20**

Depth of the belowground bud bank (root buds excluded) [cm]: **4**

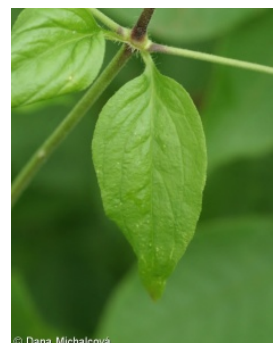
Number of buds per shoot at the soil surface (root buds included): **5**

Number of buds per shoot at a depth of 0–10 cm (root buds included): **15**

Number of buds per shoot at a depth greater than 10 cm (root buds included): **0**

Size of the belowground bud bank (root buds included): **20**

Depth of the belowground bud bank (root buds included) [cm]: **4**



## Trophic mode

Parasitism and mycoheterotrophy: **autotrophic**

Carnivory: **non-carnivorous**

Symbiotic nitrogen fixation: **no nitrogen-fixing symbionts**



## Karyology

Chromosome number (2n): **24**

Ploidy level (x): **2**

2C genome size [Mbp]: **12519.52**

1Cx monoploid genome size [Mbp]: **6259.76**

Genomic GC content: **40 %**

## Taxon origin

Origin in the Czech Republic: **native**

## Ecological indicator values

Ellenberg-type indicator values

Light indicator value: **6 - transition between values 5 and 7; rarely at less than 20% of diffuse radiation incident in an open area**

Temperature indicator value: **6 - transition between values 5 and 7**

Moisture indicator value: **7 - humidity indicator, focus on well moistened, but not wet soils**

Reaction indicator value: **7 - indicator of slightly acidic to slightly basic conditions, never occurring in very acidic conditions**

Nutrient indicator value: **7 - occurring at nutrient-rich sites more often than at average sites and only exceptionally at poor sites**

Salinity indicator value: **0 - not salt tolerant, glycophyte**

Indicator values for disturbance

Whole-community disturbance frequency indicator value: **-1.05**

Herb layer disturbance frequency indicator value: **-0.7**

Whole-community disturbance severity indicator value: **0.4**

Herb layer disturbance severity indicator value: **0.39**

Whole-community structure based disturbance indicator value: **0.24**

Herb layer structure-based disturbance indicator value: **0.33**

## Habitat and sociology

Occurrence in habitats

4 Wetland and riverine herbaceous vegetation

4A Reed-beds of eutrophic still waters: **1 - rare occurrence**

4D Riverine reed vegetation: **1 - rare occurrence**

4L Nitrophilous herbaceous fringes of lowland rivers: **2 - optimum**

11 Heathlands and scrub

11J Willow galleries of loamy and sandy river banks: **2 - optimum**

11L Tall mesic and xeric shrub: **2 - optimum**

12 Forests

12B Alluvial forests: **1 - rare occurrence**

12U Plantations of broad-leaved non-native trees: **1 - rare occurrence**

Affinity to the forest environment

Affinity to the forest environment in Thermophyticum: **1.2 - taxon occurring mainly along forest edges and in forest openings, including forest roads and paths, windthrow sites, burnt sites and forest clearings**

Affinity to the forest environment in Mesophyticum and Oreophyticum: **1.2 - taxon occurring mainly along forest edges and in forest openings, including forest roads and paths, windthrow sites, burnt sites and forest clearings**

Diagnostic taxon

Diagnostic taxon of alliances: [KAA \*Salicion triandrae\*](#), [XDA \*Senecionion fluviatilis\*](#)

Diagnostic taxon of associations: [KAA01 \*Salicetum triandrae\*](#), [KBB05 \*Rhamno catharticae-Cornetum sanguineae\*](#), [XDA01 \*Cuscuta europaeae-Calystegietum sepium\*](#)

Constant taxon

Constant taxon of associations: [XDA01 \*Cuscuta europaeae-Calystegietum sepium\*](#)

Dominant taxon

Dominant taxon of associations: [XDA01 \*Cuscuta europaeae-Calystegietum sepium\*](#)

Ecological specialization indices

Ecological specialization index for all vegetation types: **5.2**

Ecological specialization index for non-forest vegetation: **5.1**

Ecological specialization index for forest vegetation: **5.5**

### Colonization ability

Index of colonization success (ICS): **3**

Index of colonization potential (ICP): **8**

Optimum successional age [years]: **75**

### Distribution and frequency

Continentality degree: **6**

Distribution range extension along the continentality gradient: **5**

Elevational belt in the Czech Republic: **lowlands, colline belt**

Occurrence frequency in the basic grid mapping cells and quadrants of the basic grid mapping cells: **172**

taxon.data.freq\_in\_quad: **362**

### Commonness in vegetation plots from the Czech Republic

Occurrence frequency in vegetation plots: **0.1 %**

Occurrence frequency in vegetation plots with a cover above 5%: **30.3 %**

Occurrence frequency in vegetation plots with a cover above 25%: **21.2 %**

Occurrence frequency in vegetation plots with a cover above 50%: **0 %**

Mean percentage cover in vegetation plots: **10.7 %**

Maximum percentage cover in vegetation plots: **38 %**

### Number of habitats with taxon occurrence in the Czech Republic

Number of narrow habitats in which the taxon occurs: **7**

Number of narrow habitats in which the taxon has its optimum: **3**

Number of broad habitats in which the taxon occurs: **3**

Number of broad habitats in which the taxon has its optimum: **2**

### Threats and protection

Red List 2017 (national categories): **C3 - vulnerable taxon**

Red List 2017 (IUCN categories): **NT - near threatened**

Legal protection: **not protected by law**