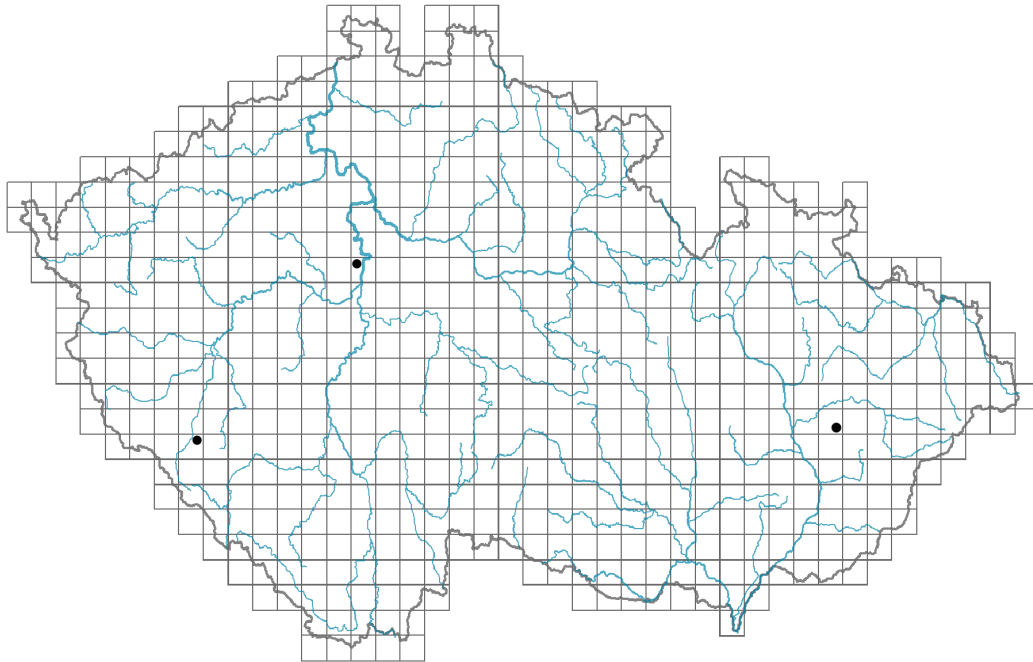


Vicia bithynica

Distribution



Map info

- revised records
- unrevised records

On the map are not visualized records without the coordinates and records marked as incorrect or doubtful.

Habitus and growth type

Life form: **therophyte**

Leaf

Leaf presence and metamorphosis: **leaves present, not modified**

Leaf arrangement (phyllotaxis): **alternate**

Leaf shape: **compound - paripinnate**

Stipules: **present**

Petiole: **present**

Flower

Flower colour: **white, red-violet**

Flower symmetry: **zygomorphic**

Perianth type: **calyx and corolla**

Perianth fusion: **free**

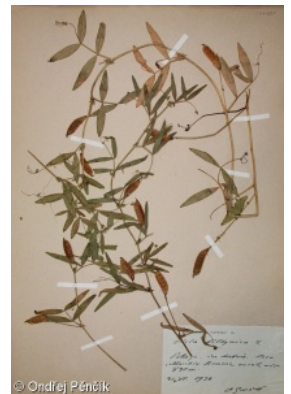
Calyx fusion: **synsepalous**

Inflorescence type: **racemus**

Fruit, seed and dispersal

Fruit type: **dry fruit - legume**

Myrmecochory: **non-myrmecochorous (b)**



Trophic mode

Parasitism and mycoheterotrophy: **autotrophic**

Carnivory: **non-carnivorous**

Symbiotic nitrogen fixation: **symbiosis with rhizobia**

Taxon origin

Origin in the Czech Republic: **neophyte**

Invasion status: **casual**

Geographic origin: **Mediterranean**

Year of the first record in the wild: **1949**

Period of introduction: **Late Modern Period (1800-1950)**

Introduction pathway: **unintentional - anthropogenic**



Habitat and sociology

Affinity to the forest environment

Affinity to the forest environment in Thermophyticum: **0 - taxon that does not spontaneously occur in Czech forests**

Affinity to the forest environment in Mesophyticum and Oreophyticum: **0 - taxon that does not spontaneously occur in Czech forests**

Threats and protection

Red List 2017 (national categories): **taxon is not on the Red List**

Red List 2017 (IUCN categories): **LC(NA) - least concern (taxon is not on the Red List)**

Legal protection: **not protected by law**