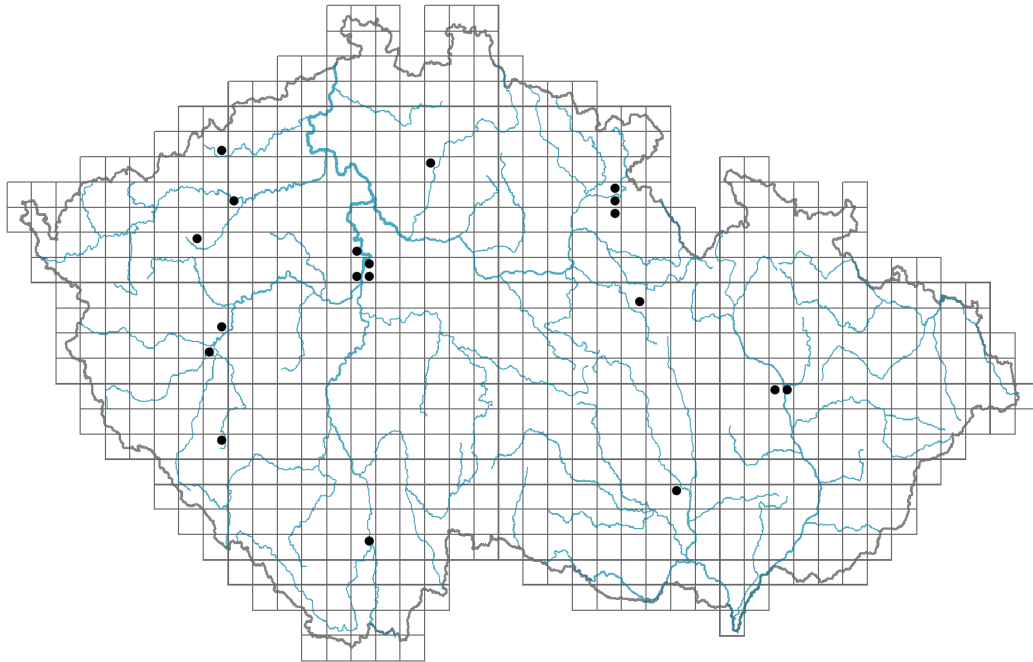


Vicia ervilia

Distribution



Map info

- revised records
- unrevised records

On the map are not visualized records without the coordinates and records marked as incorrect or doubtful.

Habitus and growth type

Height [m]: **0.2-0.5**

Growth form: **annual herb**

Life form: **therophyte**

Life strategy: **CR - competitor/ruderal**

Life strategy (Pierce method based on leaf traits): **R/CSR**

Life strategy (Pierce method, C-score): **26.3 %**

Life strategy (Pierce method, S-score): **13.6 %**

Life strategy (Pierce method, R-score): **60.1 %**

Leaf

Leaf presence and metamorphosis: **leaves present, not modified**

Leaf arrangement (phyllotaxis): **alternate**

Leaf shape: **compound - paripinnate**

Stipules: **present**

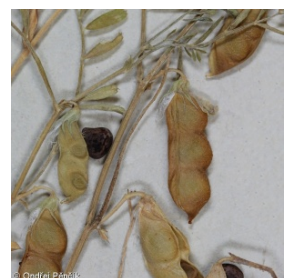
Petiole: **present**

Leaf life span: **summer green**

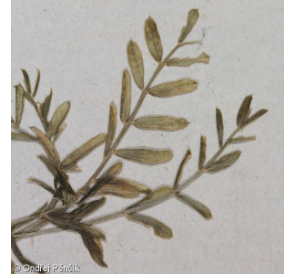
Flower

Flowering period [month]: **June-July**

Flower colour: **white, yellow-white**



Flower symmetry: **zygomorphic**
Perianth type: **calyx and corolla**
Perianth fusion: **free**
Calyx fusion: **synsepalous**
Inflorescence type: **racemus**
Dicliny: **synoecious**
Generative reproduction type: **autogamy**
Pollination syndrome: **selfing**



Fruit, seed and dispersal

Fruit type: **dry fruit - legume**
Reproduction type: **only by seed/spores**
Dispersal unit (diaspore): **seed**
Dispersal strategy: **Allium (mainly autochory)**
Myrmecochory: **non-myrmecochorous (b)**

Belowground organs and clonality

Shoot life span (cyclicality): **monocyclic shoots prevailing**
Primary root: **present**
Bud bank
Number of buds per shoot at the soil surface (root buds excluded): **3**
Number of buds per shoot at a depth of 0–10 cm (root buds excluded): **0**
Number of buds per shoot at a depth greater than 10 cm (root buds excluded): **0**
Size of the belowground bud bank (root buds excluded): **3**
Depth of the belowground bud bank (root buds excluded) [cm]: **1**
Number of buds per shoot at the soil surface (root buds included): **3**
Number of buds per shoot at a depth of 0–10 cm (root buds included): **0**
Number of buds per shoot at a depth greater than 10 cm (root buds included): **0**
Size of the belowground bud bank (root buds included): **3**
Depth of the belowground bud bank (root buds included) [cm]: **1**

Trophic mode

Parasitism and mycoheterotrophy: **autotrophic**
Carnivory: **non-carnivorous**
Symbiotic nitrogen fixation: **symbiosis with rhizobia**

Taxon origin

Origin in the Czech Republic: **archaeophyte**
Invasion status: **casual**
Geographic origin: **Mediterranean**
Period of introduction: **Bronze Age (2300–750 BCE)**
Introduction pathway: **intentional - crops**

Habitat and sociology

Affinity to the forest environment

Affinity to the forest environment in Thermophyticum: **0 - taxon that does not spontaneously occur in Czech forests**

Affinity to the forest environment in Mesophyticum and Oreophyticum: **0 - taxon that does not spontaneously occur in Czech forests**

Distribution and frequency

Floristic zone: **southern temperate, submeridional, meridional**

Floristic region: **Europe**

Occurrence frequency in the basic grid mapping cells and quadrants of the basic grid mapping cells: 16

taxon.data.freq_in_quad: 20

Threats and protection

Red List 2017 (national categories): **taxon is not on the Red List**

Red List 2017 (IUCN categories): **LC(NA) - least concern (taxon is not on the Red List)**

Legal protection: **not protected by law**