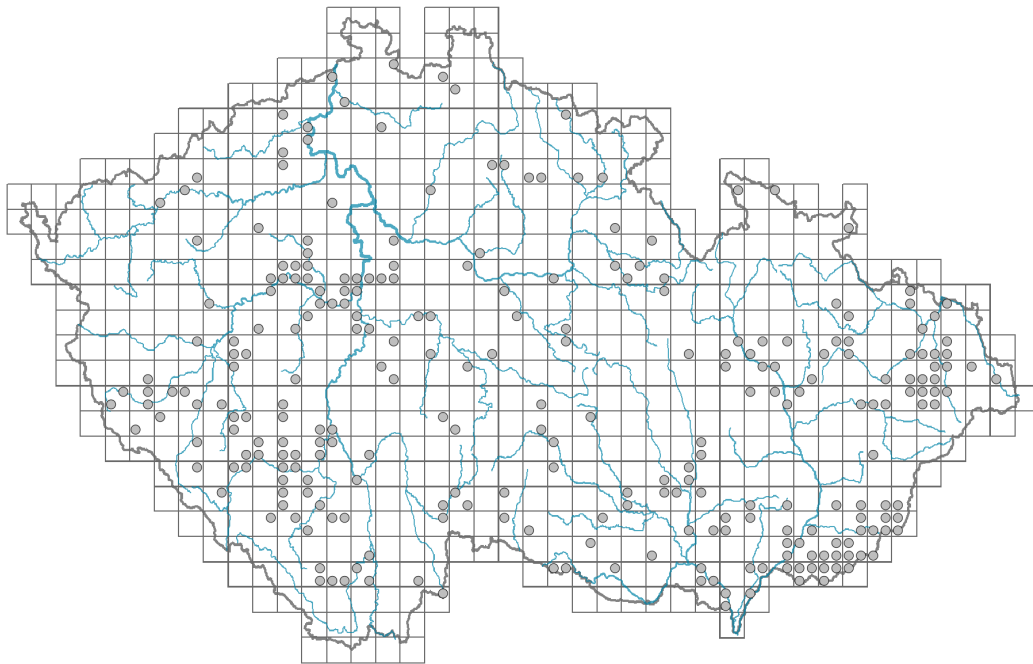


# *Aethusa cynapioides*

## Distribution



### Map info

● revised records

○ unrevised records

On the map are not visualized records without the coordinates and records marked as incorrect or doubtful.



## Habitus and growth type

Height [m]: **1-2.3**

Life form: **therophyte**

## Leaf

Leaf presence and metamorphosis: **leaves present, not modified**

Leaf arrangement (phyllotaxis): **alternate**

Leaf shape: **compound - bipinnate**

Stipules: **absent**

Petiole: **present**

## Flower

Flowering period [month]: **July-September**

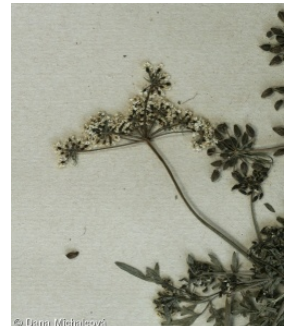
Flower colour: **white**

Flower symmetry: **actinomorphic, zygomorphic**

Perianth type: **calyx absent, corolla present**

Perianth fusion: **free**

Inflorescence type: **umbella composita**



## Fruit, seed and dispersal

Fruit type: **dry fruit - cremocarp**

Dispersal unit (diaspore): **fruit, infrutescence or its part**

Dispersal strategy: **Allium (mainly autochory)**

Myrmecochory: **non-myrmecochorous (b)**

## Trophic mode

Parasitism and mycoheterotrophy: **autotrophic**

Carnivory: **non-carnivorous**

Symbiotic nitrogen fixation: **no nitrogen-fixing symbionts**



## Taxon origin

Origin in the Czech Republic: **native**

## Ecological indicator values

Ellenberg-type indicator values

Light indicator value: **5 - semi-shade plant, only exceptionally occurring in full light, but usually at more than 10% of the diffuse radiation incident in an open area**

Temperature indicator value: **5 - moderate heat indicator, occurring from lowland to montane belt, mainly in submontane-temperate areas**

Moisture indicator value: **6 - transition between values 5 and 7**

Reaction indicator value: **7 - indicator of slightly acidic to slightly basic conditions, never occurring in very acidic conditions**

Nutrient indicator value: **8 - pronounced nutrient indicator**

Salinity indicator value: **0 - not salt tolerant, glycophyte**

## Habitat and sociology

Occurrence in habitats

11 Heathlands and scrub

11R Scrub and pioneer woodland of forests clearings: **1 - rare occurrence**

12 Forests

12B Alluvial forests: **1 - rare occurrence**

12C Oak-hornbeam forests: **1 - rare occurrence**

12D Ravine forests: **2 - optimum**

12E Herb-rich beech forests: **1 - rare occurrence**

12V Spruce plantations: **1 - rare occurrence**

13 Anthropogenic vegetation

13E Perennial nitrophilous herbaceous vegetation of mesic sites: **2 - optimum**

13F Herbaceous vegetation of forests clearings and Rubus scrub: **2 - optimum**

Affinity to the forest environment

Affinity to the forest environment in Thermophyticum: **1.2 - taxon occurring mainly along forest edges and in forest openings, including forest roads and paths, windthrow sites, burnt sites and forest clearings**

Affinity to the forest environment in Mesophyticum and Oreophyticum: **1.2 - taxon occurring mainly along forest edges and in forest openings, including forest roads and paths, windthrow sites, burnt sites and forest clearings**

## Distribution and frequency

Distribution range extension along the continentality gradient: **5**

Elevational belt in the Czech Republic: **lowlands, colline belt**

Occurrence frequency in the basic grid mapping cells and quadrants of the basic grid mapping cells: **193**

taxon.data.freq\_in\_quad: **268**

Number of habitats with taxon occurrence in the Czech Republic

Number of narrow habitats in which the taxon occurs: **8**

Number of narrow habitats in which the taxon has its optimum: **3**

Number of broad habitats in which the taxon occurs: **3**

Number of broad habitats in which the taxon has its optimum: **2**

## Threats and protection

Red List 2017 (national categories): **C4a - near threatened taxon**

Red List 2017 (IUCN categories): **NT - near threatened**

Legal protection: **not protected by law**