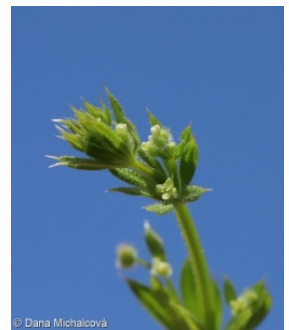
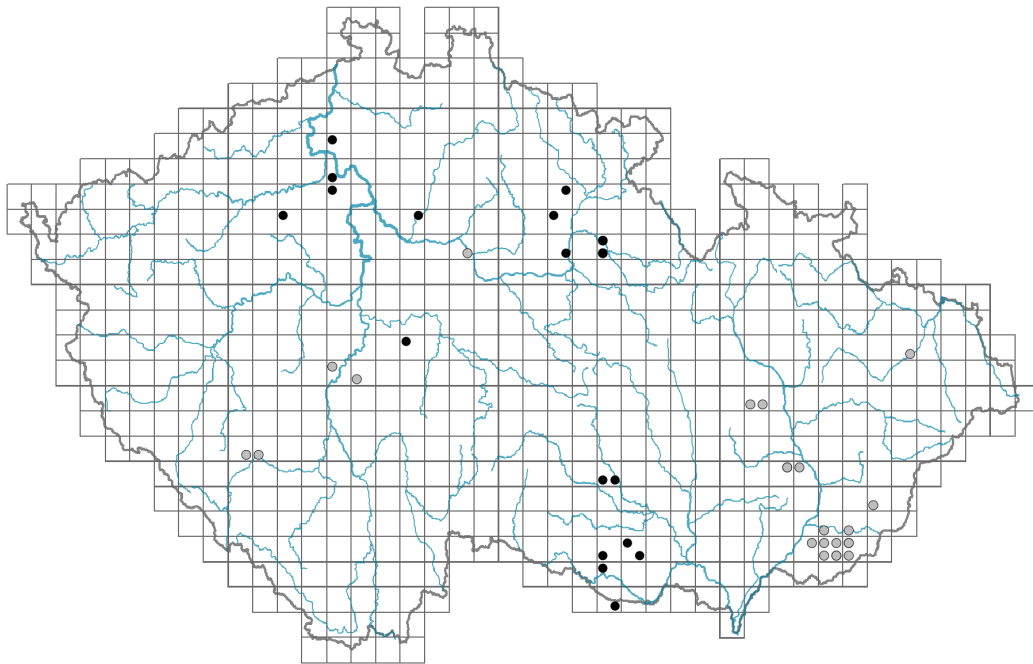


Galium spurium subsp. *spurium*

Distribution



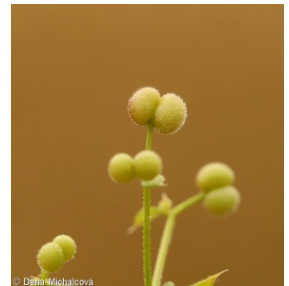
© Dana Michalčová

Map info

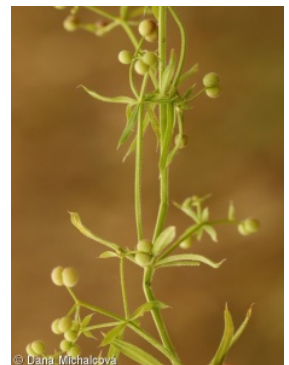
● revised records

○ unrevised records

On the map are not visualized records without the coordinates and records marked as incorrect or doubtful.



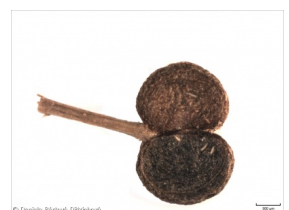
© Dana Michalčová



© Dana Michalčová



© Maruša Tomšičová



© Zuzana Štefánková, Štěpánková

Habitus and growth type

Height [m]: **0.15-1.5**

Growth form: **annual herb**

Life form: **therophyte**

Life strategy: **CR - competitor/ruderal**

Leaf

Leaf presence and metamorphosis: **leaves present, not modified**

Leaf arrangement (phyllotaxis): **verticillate**

Leaf shape: **simple - entire**

Stipules: **present**

Petiole: **absent**

Leaf life span: **overwintering green**

Leaf anatomy: **mesomorphic**

Flower

Flowering phase: **6 Cornus sanguinea-Melica uniflora (start of early summer)**

Flower colour: **yellow-green**

Flower symmetry: **actinomorphic**

Perianth type: **calyx absent, corolla present**

Perianth fusion: **fused**

Shape of the sympetalous corolla or syntepalous perianth: **rotate**

Inflorescence type: **dichasium**

Dicliny: **synoecious**

Generative reproduction type: **autogamy**

Pollination syndrome: **insect-pollination, selfing**



Fruit, seed and dispersal

Fruit type: **dry fruit - pair of nutlets**

Fruit colour: **brown**

Reproduction type: **only by seed/spores**

Dispersal unit (diaspore): **fruit, infrutescence or its part**

Dispersal strategy: **Allium (mainly autochory), Bidens (mainly autochory and epizoochory)**

Myrmecochory: **non-myrmecochorous (b)**



Belowground organs and clonality

Shoot life span (cyclicity): **monocyclic shoots prevailing**

Primary root: **present**

Bud bank

Number of buds per shoot at the soil surface (root buds excluded): **3**

Number of buds per shoot at a depth of 0–10 cm (root buds excluded): **0**

Number of buds per shoot at a depth greater than 10 cm (root buds excluded): **0**

Size of the belowground bud bank (root buds excluded): **3**

Depth of the belowground bud bank (root buds excluded) [cm]: **1**

Number of buds per shoot at the soil surface (root buds included): **3**

Number of buds per shoot at a depth of 0–10 cm (root buds included): **0**

Number of buds per shoot at a depth greater than 10 cm (root buds included): **0**

Size of the belowground bud bank (root buds included): **3**

Depth of the belowground bud bank (root buds included) [cm]: **1**

Trophic mode

Parasitism and mycoheterotrophy: **autotrophic**

Carnivory: **non-carnivorous**

Symbiotic nitrogen fixation: **no nitrogen-fixing symbionts**

Karyology

Chromosome number (2n): **20**

Ploidy level (x): **2**

2C genome size [Mbp]: **670.82**

1Cx monoploid genome size [Mbp]: **335.41**

Genomic GC content: **40.2 %**

Taxon origin

Origin in the Czech Republic: **archaeophyte**

Invasion status: **naturalized**

Geographic origin: **Europe, Mediterranean**

Period of introduction: **Neolithic (5600-4200 BCE)**

Introduction pathway: **unintentional - agriculture**

Ecological indicator values

Ellenberg-type indicator values

Light indicator value: **7 - half-light plant, mostly occurring at full light, but also in the shade up to about 30% of diffuse radiation incident in an open area**

Temperature indicator value: **6 - transition between values 5 and 7**

Moisture indicator value: **5 - indicator of fresh soils, focus on soils of average moisture, missing on wet and on soils that frequently dry out**

Reaction indicator value: **7 - indicator of slightly acidic to slightly basic conditions, never occurring in very acidic conditions**

Nutrient indicator value: **6 - transition between values 5 and 7**

Salinity indicator value: **0 - not salt tolerant, glycophyte**

Indicator values for disturbance

Whole-community disturbance frequency indicator value: **0.24**

Herb layer disturbance frequency indicator value: **0.24**

Whole-community disturbance severity indicator value: **0.98**

Herb layer disturbance severity indicator value: **0.98**

Whole-community structure based disturbance indicator value: **0.79**

Herb layer structure-based disturbance indicator value: **0.84**

Habitat and sociology

Occurrence in habitats

11 Heathlands and scrub

11L Tall mesic and xeric shrub: **1 - rare occurrence**

11N Low xeric scrub: **1 - rare occurrence**

13 Anthropogenic vegetation

13A Annual vegetation of ruderal habitats: **1 - rare occurrence**

13B Annual vegetation of arable land: **2 - optimum**

13D Perennial thermophilous ruderal vegetation: **1 - rare occurrence**

Affinity to the forest environment

Affinity to the forest environment in Thermophyticum: **0 - taxon that does not spontaneously occur in Czech forests**

Affinity to the forest environment in Mesophyticum and Oreophyticum: **0 - taxon that does not spontaneously occur in Czech forests**

Diagnostic taxon

Diagnostic taxon of alliances: [**XBA Caucalidion**](#)

Diagnostic taxon of associations: [**XBA01 Caucalido platycarpi-Conringietum orientalis**](#), [**XBA03 Euphorbio exiguae-Melandrietum noctiflori**](#)

Ecological specialization indices

Ecological specialization index for all vegetation types: **6.2**

Ecological specialization index for non-forest vegetation: **6.2**

Colonization ability

Index of colonization success (ICS): **3**

Index of colonization potential (ICP): **3**

Optimum successional age [years]: **2.5**

Distribution and frequency

Floristic zone: **boreal, northern temperate, southern temperate, submeridional, meridional, subtropical, tropical**

Floristic region: **Europe, Western Asia, Africa**

Distribution range extension along the continentality gradient: **7**

Elevational belt in the Czech Republic: **lowlands, colline belt**

Occurrence frequency in the basic grid mapping cells and quadrants of the basic grid mapping cells: **273**

taxon.data.freq_in_quad: **495**

Commonness in vegetation plots from the Czech Republic

Occurrence frequency in vegetation plots: **0.6 %**

Occurrence frequency in vegetation plots with a cover above 5%: **8.9 %**

Occurrence frequency in vegetation plots with a cover above 25%: **0 %**

Occurrence frequency in vegetation plots with a cover above 50%: **0 %**

Mean percentage cover in vegetation plots: **3.3 %**

Maximum percentage cover in vegetation plots: **23 %**

Number of habitats with taxon occurrence in the Czech Republic

Number of narrow habitats in which the taxon occurs: **5**

Number of narrow habitats in which the taxon has its optimum: **1**

Number of broad habitats in which the taxon occurs: **2**

Number of broad habitats in which the taxon has its optimum: **1**

Threats and protection

Red List 2017 (national categories): **C4a - near threatened taxon**

Red List 2017 (IUCN categories): **NT - near threatened**

Legal protection: **not protected by law**